



A MITEL
PRODUCT
GUIDE

MiVoice Border Gateway

Engineering Guidelines

Release 12.0
Document Version 1.0

July 2024

Notices

The information contained in this document is believed to be accurate in all respects but is not warranted by **Mitel Networks Corporation (MITEL®)**. The information is subject to change without notice and should not be construed in any way as a commitment by Mitel or any of its affiliates or subsidiaries. Mitel and its affiliates and subsidiaries assume no responsibility for any errors or omissions in this document. Revisions of this document or new editions of it may be issued to incorporate such changes. No part of this document can be reproduced or transmitted in any form or by any means - electronic or mechanical - for any purpose without written permission from Mitel Networks Corporation.

Trademarks

The trademarks, service marks, logos and graphics (collectively "Trademarks") appearing on Mitel's Internet sites or in its publications are registered and unregistered trademarks of Mitel Networks Corporation (MNC), its affiliates, parents, or subsidiaries (collectively "Mitel") or others. Use of the Trademarks is prohibited without the express consent from Mitel. Please contact our legal department at legal@mitel.com for additional information. For a list of the worldwide Mitel Networks Corporation registered trademarks, please refer to the website: <http://www.mitel.com/trademarks>.

®,™ Trademark of Mitel Networks Corporation

© Copyright 2024, Mitel Networks Corporation

All rights reserved

Contents

| | |
|---|-----------|
| 1 About this Document..... | 1 |
| 1.1 What's New in This Document..... | 1 |
| 1.2 Overview..... | 1 |
| 1.3 Prerequisites..... | 2 |
| 1.4 About the MBG Documentation Set..... | 2 |
| | |
| 2 Supported Configurations..... | 3 |
| 2.1 Services..... | 5 |
| 2.2 Teleworkers and Remote Office..... | 5 |
| 2.2.1 Teleworker Overview..... | 6 |
| 2.2.2 MiVoice Border Gateway in a DMZ..... | 7 |
| 2.2.3 Firewalls (DMZ deployment)..... | 8 |
| 2.3 NAT Traversal to Multiple MiVoice Business Instances..... | 10 |
| 2.4 Secure Gateway for Broadview Networks Silhouette HKS..... | 11 |
| 2.5 Secure Recording Environment..... | 12 |
| 2.5.1 MBG Deployed on the LAN for Call Recording..... | 12 |
| 2.6 SIP Trunking..... | 14 |
| 2.7 Daisy Chain Deployments..... | 15 |
| 2.7.1 Special IT Policy Deployment..... | 16 |
| 2.7.2 Reduced Bandwidth for Remote Sites..... | 17 |
| 2.8 MiVoice Border Gateway in MiCollab..... | 18 |
| 2.8.1 MiCollab on the LAN..... | 18 |
| 2.8.2 MiCollab Behind a Customer Firewall..... | 18 |
| 2.9 MBG in MiVoice Business Express..... | 19 |
| 2.10 Partial Service Configurations..... | 19 |
| | |
| 3 Common Requirements..... | 21 |
| 3.1 Administrative Access..... | 21 |
| 3.2 Additional Trusted Local Networks..... | 21 |
| | |
| 4 Remote Phone Access..... | 23 |
| 4.1 Remote Site Requirements..... | 23 |
| 4.1.1 Router..... | 23 |
| 4.1.2 VPN Connectivity..... | 24 |
| 4.1.3 Using an Existing VPN..... | 24 |
| 4.1.4 Bandwidth Requirements for the Remote Site..... | 24 |
| 4.1.5 Configuring the Remote Site Firewall..... | 27 |
| 4.2 Firewall Configuration for Remote MiNet Devices..... | 27 |
| 4.3 Configuring MBG for Remote SIP and WebRTC Devices..... | 28 |
| 4.3.1 Tuning Global Parameters..... | 28 |
| 4.3.2 Support..... | 29 |

| | |
|---|-----------|
| 4.4 Firewall Configuration for Remote SIP Devices..... | 29 |
| 5 Teleworker Service..... | 39 |
| 5.1 Corporate Firewall & Network Configuration for VPN Access..... | 39 |
| 6 SIP Trunking..... | 40 |
| 6.1 Overview..... | 40 |
| 6.2 Send Options Keepalives..... | 42 |
| 6.2.1 Fixed Trunk Mode..... | 42 |
| 6.2.2 SRV Trunk Mode..... | 42 |
| 6.3 Bandwidth Requirements..... | 42 |
| 6.4 Resilient ICP Configuration..... | 42 |
| 6.4.1 Configure Resiliency between the ICPs..... | 42 |
| 6.4.2 Configure MiVoice Border Gateway Clustering..... | 43 |
| 6.5 Resilient Trunk Configuration..... | 44 |
| 6.6 DNS Support..... | 45 |
| 6.7 SIP Adaptation..... | 46 |
| 6.8 Firewall Configuration for SIP Trunking..... | 46 |
| 7 Call Recording..... | 48 |
| 7.1 Requirements..... | 49 |
| 7.2 Phones/Devices..... | 49 |
| 7.3 Firewall..... | 49 |
| 8 Web Real-Time Communication (WebRTC)..... | 50 |
| 8.1 WebRTC Gateway Supported Configurations..... | 50 |
| 8.1.1 ICP Support..... | 50 |
| 8.2 WebRTC Architecture and Topology..... | 51 |
| 8.3 Firewall Configuration for WebRTC Gateway..... | 51 |
| 9 Additional Application Requirements..... | 53 |
| 9.1 MiCollab Client v6.0+..... | 53 |
| 9.2 MiContact Center..... | 54 |
| 9.3 Web Proxy..... | 54 |
| 9.4 MiCollab AWW Conferencing..... | 54 |
| 9.4.1 Additional Dedicated External IP Address on TCP Port 443..... | 55 |
| 9.4.2 Dedicated TCP Port on the Primary External IP Address..... | 55 |
| 10 Additional Security Considerations..... | 57 |
| 10.1 SIP Security..... | 57 |
| 11 Clustering..... | 58 |
| 11.1 Overview..... | 58 |
| 11.2 Cluster Zones..... | 59 |
| 11.3 Node Weighting..... | 59 |

| | |
|---|----|
| 11.4 Additional Considerations..... | 60 |
| 11.5 Firewall Configuration for Clustering..... | 61 |

12 Advanced Options..... 62

| | |
|--|----|
| 12.1 Resiliency..... | 62 |
| 12.1.1 Run Time Resiliency..... | 62 |
| 12.1.2 Boot Time Resiliency..... | 63 |
| 12.2 IP Translations..... | 63 |
| 12.3 Streaming Addresses..... | 64 |
| 12.3.1 DMZ Deployment Profile..... | 65 |
| 12.3.2 Gateway Deployment Profile..... | 65 |
| 12.4 RTP Frame Size..... | 65 |
| 12.5 TFTP Block Size..... | 66 |
| 12.6 Compression Codecs..... | 66 |
| 12.6.1 MiNet devices..... | 66 |
| 12.6.2 SIP devices..... | 67 |
| 12.7 SRTP Port Range..... | 67 |
| 12.8 DSCP..... | 67 |

13 Sizing Your Installation..... 69

| | |
|--|----|
| 13.1 Determining Line Size for Large Sites..... | 69 |
| 13.1.1 Step One: Determine Call Rate..... | 69 |
| 13.1.2 Step Two: Determine Service Rate..... | 70 |
| 13.1.3 Step Three: Determine Grade of Service..... | 70 |
| 13.1.4 Step Four: Erlang-B Calculator..... | 70 |
| 13.2 Determine Call Equivalents..... | 70 |
| 13.3 Determine Bandwidth Requirements..... | 71 |
| 13.3.1 G.711 Calculation..... | 72 |
| 13.3.2 G.729a Calculation..... | 72 |
| 13.3.3 Video Calculation..... | 73 |
| 13.3.4 Fax Calculation..... | 74 |
| 13.3.5 Call Recording Calculation..... | 74 |
| 13.3.6 Example Bandwidth Calculation..... | 75 |
| 13.4 Hardware Selection..... | 76 |
| 13.5 Web Proxy and Remote Management Service Requirements..... | 76 |
| 13.5.1 Calculation of the required number of web proxy ports..... | 76 |
| 13.6 MiCollab Client and MiCollab AWW Conferencing Requirements..... | 77 |
| 13.7 MiContact Center Softphone Requirements..... | 79 |

14 Virtual MBG Considerations..... 82

| | |
|------------------------------------|----|
| 14.1 Licensing..... | 82 |
| 14.2 Upgrades..... | 82 |
| 14.3 Host Server Requirements..... | 83 |
| 14.3.1 Hardware..... | 83 |
| 14.3.2 Software..... | 83 |
| 14.4 High-Availability..... | 83 |

15 Solutions to Common Problems..... 84

| | |
|--|----|
| 15.1 Changing a Cluster Node's IP Address..... | 84 |
| 15.2 T.38 Faxing Does Not Work With NAT..... | 84 |

| | |
|--|---------------|
| 16 Performance Characteristics and Limits..... | 86 |
| 16.1 MBG Capacities – Device (MiNet & SIP) and Trunking (SIP)..... | 86 |
| 16.2 MBG Capacities – WebRTC..... | 88 |
| 16.3 Web Proxy Capacities..... | 89 |
| 16.4 MBG System Capacities..... | 90 |
| 17 Appendix A: Firewall Configuration Reference..... | 92 |

About this Document

This chapter contains the following sections:

- [What's New in This Document](#)
- [Overview](#)
- [Prerequisites](#)
- [About the MBG Documentation Set](#)

1.1 What's New in This Document

This section describes changes in this document due to new and changed functionality in MiVoice Border Gateway 12.0 release . The changes are summarized in the following table.

Table 1: Document Version 1.0

| Feature/Enhancement | Document Updates | Location | Publishing Date |
|-------------------------------|---|--|-----------------|
| Firewall Configuration Update | Added the information about deploying a third-party firewall in front of MiVoice Border Gateway device. | Appendix A: Firewall Configuration Reference | July 2024 |

1.2 Overview

The purpose of this document is to describe configuration rules, provisioning, and performance information for the MiVoice Border Gateway, and associated products in order to assist in sales and support of this product. This information is intended for Training, Sales and Product support staff and complements other sales material and product documentation.



Note:

The Secure Recording Connector (SRC) has been consolidated into MBG. Accordingly, although this document discusses the SRC control interface and its protocol, it does not treat them as a separate feature.

1.3 Prerequisites

The MiVoice Border Gateway application runs on the Mitel Standard Linux (MSL) Server. The reader should first become familiar with the *MSL Installation and Administration Guide* available [here](#).

1.4 About the MBG Documentation Set

Mitel documentation is available on mitel.com. The following guides provide complete information about MBG:

- The *MiVoice Border Gateway Engineering Guidelines* (this document).
- The *MiVoice Border Gateway Installation and Maintenance Guide* provides information about system requirements, installation of MBG, and configuration of MBG options and firewalls.
- The *MiVoice Border Gateway Online Help* provides information about MBG configuration and maintenance.
- The *MiVoice Border Gateway Remote IP Phones Configuration Guide* provides information about configuring remote phones.

Supported Configurations

2

This chapter contains the following sections:

- [Services](#)
- [Teleworkers and Remote Office](#)
- [NAT Traversal to Multiple MiVoice Business Instances](#)
- [Secure Gateway for Broadview Networks Silhouette HKS](#)
- [Secure Recording Environment](#)
- [SIP Trunking](#)
- [Daisy Chain Deployments](#)
- [MiVoice Border Gateway in MiCollab](#)
- [MBG in MiVoice Business Express](#)
- [Partial Service Configurations](#)

Server-only Configuration in Network DMZ

Server-only Configuration in Network DMZ is intended for situations where there is an existing corporate De-Militarized Zone (DMZ) and the customer wants the MiVoice Border Gateway to be installed in the DMZ of the corporate firewall as illustrated in [Server-only Configuration in Network DMZ](#).

MiVoice Border Gateway acts only as a server and is protected from Internet exposure by the existing firewall.

On the MiVoice Border Gateway, the network interface is configured with an IP address that is:

- dedicated to the MiVoice Border Gateway solution.
- private (allocated from the firewall's DMZ network range)
- reachable from the internal network

On the enterprise firewall, configure the WAN interface with an IP address that is:

- dedicated to the MiVoice Border Gateway Solution
- publicly routable via the firewall
- reachable from the Internet and the internal network.

When configuration is complete, the solution will use the public, post-NAT address of the MiVoice Border Gateway server for both the IP phone and the Call Control (for example, MiVoice Business, MX-ONE, and so on) streaming addresses of the MiVoice Border Gateway.

In a DMZ configuration, the firewall is the gateway for all traffic and has the following interfaces: WAN, LAN, and DMZ.

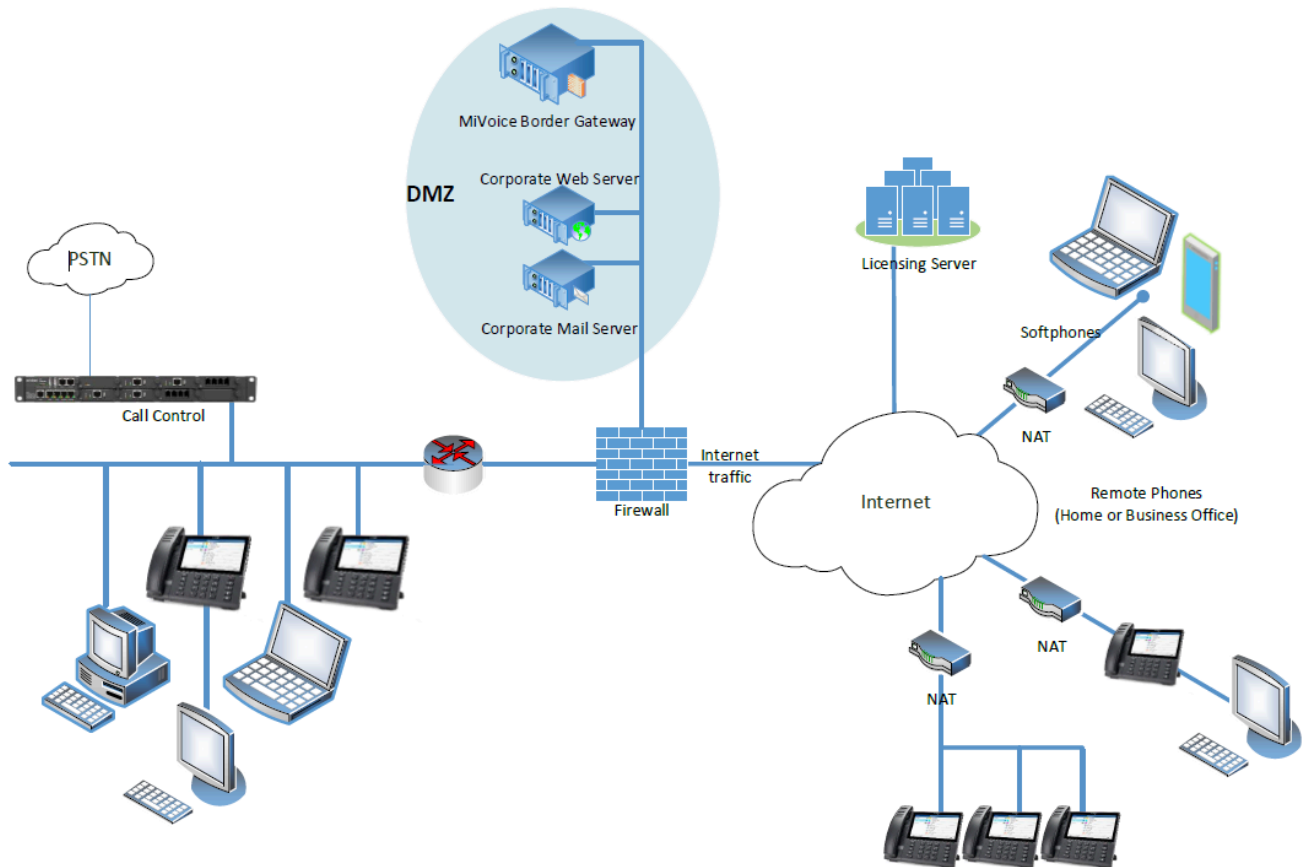


Figure 1: Server-only Configuration in Network DMZ

Server-Gateway Configuration Behind the Customer Firewall

In this configuration, the MiVoice Border Gateway functions with two Ethernet interfaces.

One interface is connected to the customer's Internet Firewall while the other is connected to the internal Local Area Network (LAN). Typically, this internal connection is isolated to Voice VLAN traffic only. Data traffic initiated inside the network is allowed while data traffic initiated outside the network is denied.

The external (WAN) IP address of the MiVoice Border Gateway server must be:

- dedicated to the MiVoice Border Gateway Solution
- reachable from the Internet via the customer's properly configured Firewall and the internal network (typically the voice VLAN)

In the server-gateway configuration, the MiVoice Border Gateway server is the gateway to the Internet for MiVoice Border Gateway traffic through the customer's firewall. That is, MiVoice Border Gateway is configured to function as the voice firewall and gateway behind the corporate firewall. This configuration is a typical scenario in a small business setting and allows the customer to take advantage of the MiVoice Border Gateway capabilities. Server-Gateway mode is also used with cloud deployments, such as AWS and Azure, where the MiVoice Border Gateway is situated behind the cloud provider's Internet facing firewall (for example, Azure Network Security Group) with one interface in the Applications vNet and the other in the MiVoice Border Gateway vNet.

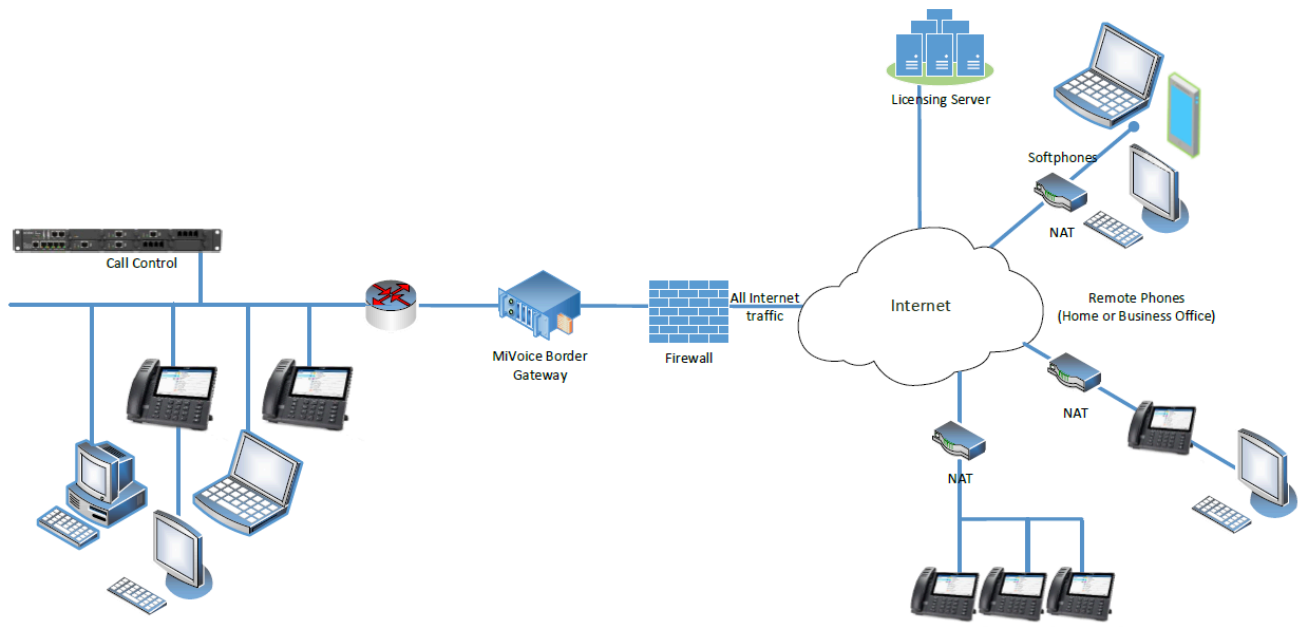


Figure 2: Server-Gateway Configuration Behind the Customer Firewall

2.1 Services

MiVoice Border Gateway provides the following services:

- **Remote MiNet IP Phones:** The classic use of MiVoice Border Gateway, formerly known as the Teleworker Solution, permits remote MiNet phones to securely access the corporate phone network over the Internet.
- **Remote SIP IP Phones:** Permits Teleworker functionality for SIP hard or soft phones over the Internet.
- **SIP Trunking:** Allows a corporate phone switch to connect to a SIP Trunk provider, protecting the switch from malformed messages, unauthorized use, and various attacks, and providing an anchor point for media streams.
- **Call Recording:** Formerly the Secure Recording Connector, this service allows secure recording of phone calls by a third-party application.
- **WebRTC:** A gateway to support browser-based voice and video calling.
- **Remote Proxy:**
 - **Web Proxy:** end-user access from the WAN to applications hosted inside the firewall
 - **Remote Management Service:** administrative access from the WAN to applications hosted inside the firewall

Refer to the Remote Proxy Services documentation for details. MiVoice Border Gateway can be deployed in several ways depending on the services required.

2.2 Teleworkers and Remote Office

Note:

Mitel internet-facing applications (including MiVoice Border Gateway) should be deployed behind a properly configured corporate firewall. Additionally, Mitel recommends following the best practice of deploying stand-alone gateways specifically designed to be internet-facing, such as the Mitel Border Gateway, as bastion hosts in the corporate DMZ (provided as part of the corporate firewall) to protect LAN-based applications. For Mitel products featuring an embedded gateway (for example, those that have an embedded Mitel Border Gateway), it is still recommended to employ a separate gateway as a bastion host in the DMZ. Because of cost or management complexity constraints, though it is not feasible, the embedded gateway can be deployed to be internet-facing behind the corporate firewall through its WAN interface while connecting to the LAN through a separate network interface. These products have been hardened by running only necessary services to minimize the attack surface from the Internet, isolating LAN and WAN traffic through a separate network interfaces with an internal firewall, and isolating internet-facing gateway services from the UC application services. Lastly, the deployment of any internet-facing product should always be done in conjunction with corporate IT and in accordance to their security policies.

2.2.1 Teleworker Overview

The original design intent of MiVoice Border Gateway was to provide a Teleworker solution. The MiVoice Border Gateway (MBG) teleworker application enables remote workers to connect securely and conveniently to the corporate voice and data network without the use of a Virtual Private Network (VPN) across the Internet (or other network that requires Network Address Translation – NAT) to a Mitel IP PBX call control. Once an MBG server is installed, extensions from the office PBX can be extended across the Internet to allow the users to work from homes, remote offices, hotels, and other remote locations.

The MiVoice Border Gateway functionality has since been expanded to support Mitel applications.

While these modes are separate they have identical requirements, so we refer to both of them as SIP LOCAL+BYPASS streaming mode to use a single term for simplicity.

See Remote Phone Access for all details regarding SIP LOCAL+BYPASS streaming.

In Teleworker use-case, either the server-gateway profile or DMZ profile could be used depending where on the network MiVoice Border Gateway is to be deployed. If deploying behind an existing firewall in a DMZ, then a single network interface and DMZ profile is appropriate. When deployed behind an existing firewall a dual NIC custom profile may be appropriate.

Failure to follow these guidelines will result in one-way or no-way audio.

Warning:

Some firewalls which use port-forwarding to simulate a DMZ are Port-forwarding Firewalls. See the [Common Requirements](#) on page 21 chapter for full details.

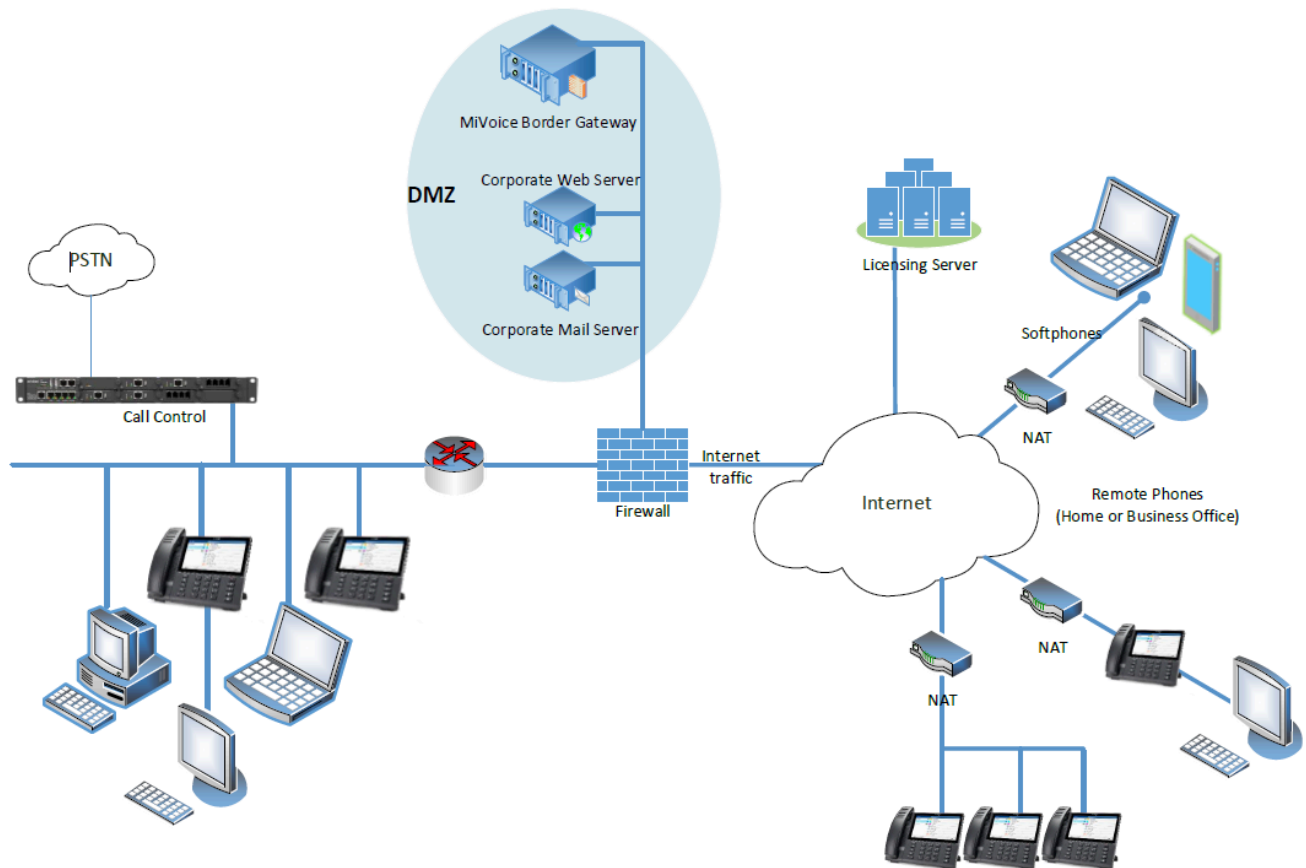


Figure 3: MiVoice Border Gateway in DMZ Teleworker configuration

2.2.2 MiVoice Border Gateway in a DMZ

The MiVoice Border Gateway can also be deployed in a customer-provided DMZ as shown in [MiVoice Border Gateway](#) in a DMZ. This firewall must have 3 network interfaces (ports): WAN, LAN, and DMZ. . It should also be noted that some “Routers” with “DMZ” port forwarding are simply two-port NAT devices and should be treated as any other two-port firewall. .

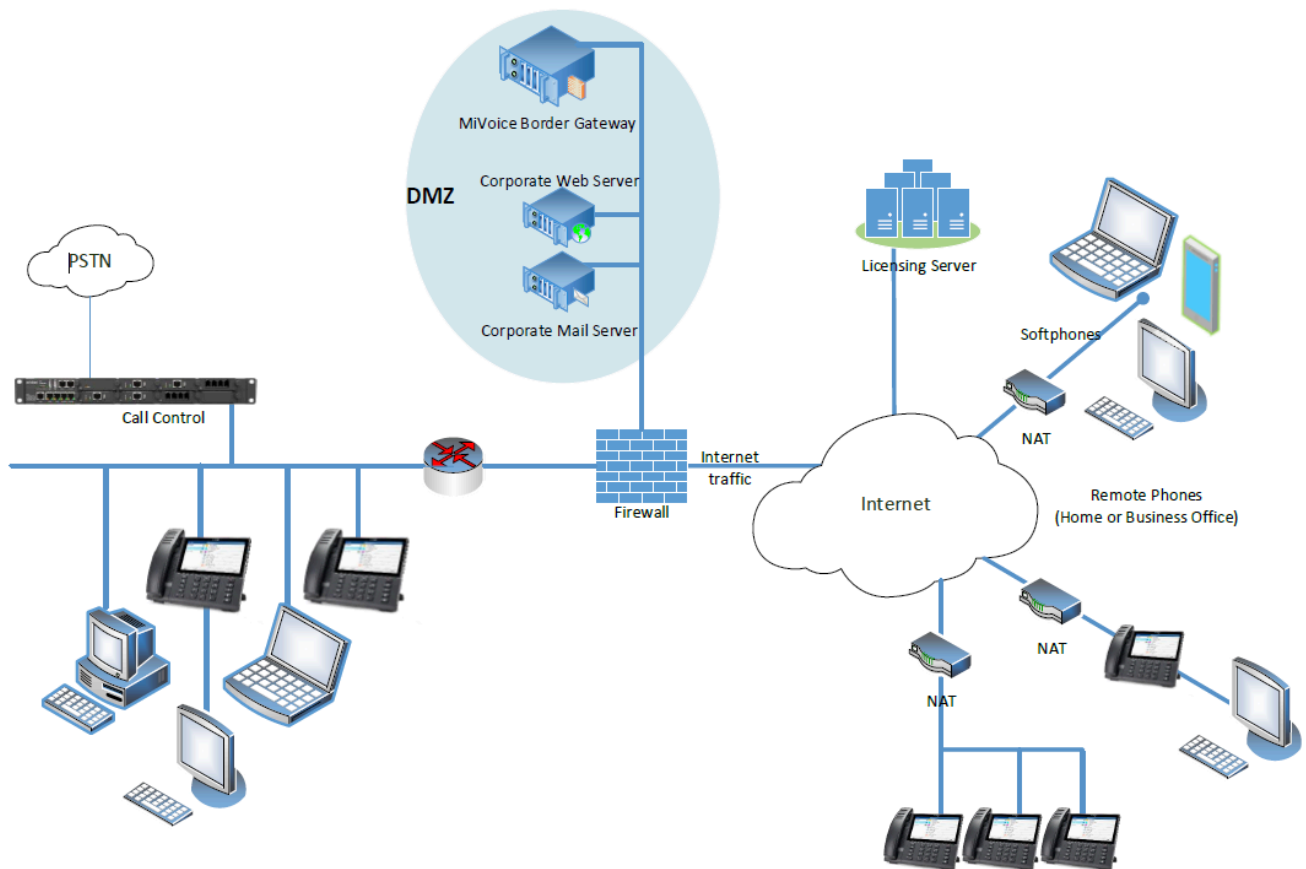


Figure 4: MiVoice Border Gateway in a DMZ

MiVoice Border Gateway requires one network interface and two addresses for this configuration. The interface must be configured with a static address allocated from the DMZ network range. This is typically an RFC 1918 “private” address. The enterprise firewall must be configured with an address allocated from the public/Internet range. This address must be:

1. reachable from the public network/Internet
2. reachable from the internal network/LAN
3. able to reach the internal network/LAN
4. preferably dedicated solely to MBG, but also see Port-forwarding firewalls

2.2.3 Firewalls (DMZ deployment)

MBG can be deployed into the DMZ of most third-party firewalls. However, a compatible firewall must have certain characteristics.

1. The firewall must provide at least three interfaces: external network, internal network, and DMZ.
2. The firewall must provide static 1:1 NAT between an externally-visible address and the DMZ address of the MBG server.
3. The public address used for MBG must be a static IP address visible from the external network (Internet). This should be a separate address from the external IP address of the firewall, although

some firewalls that support port forwarding may allow sharing the address. It is vital that this address actually be static as any change of the address will cause remote sets to lose connectivity.

4. The firewall must preserve the TCP and UDP port numbers in packets exchanged between the MBG and the external network. In other words, only the address field may be changed.

For a deployment in DMZ, see the [Server-Only Configuration on Network DMZ](#) section.

Details of the protocols that must be configured in the firewall are provided in Firewall Configuration. Particular attention should be paid to the requirement that all UDP ports ≥ 1024 on the LAN be permitted to reach the public IP of the MBG server.

Warning:

Failure to configure the firewall properly will result in audio problems (typically one-way audio).

2.2.3.1 Known Issues

2.2.3.2 Port-Forwarding Firewalls

Use of MBG server with a port-forwarding firewall (where the external address of the firewall is shared between the MiVoice Border Gateway and other applications) is supported by MBG. The firewall device must have at least 3 interfaces (external, internal, DMZ). This allows for a single external IP address to be assigned to the firewall. It does not eliminate the need for a separate DMZ network.

This special configuration is identical to a normal DMZ deployment with the exception that the MBG's publicly-visible IP address will be the same as the firewall's publicly-visible address (that is, the single public IP address is shared).

Warning:

Two-port firewall devices that simulate a DMZ through port forwarding are not supported, even if the device allows multiple external IP addresses.

2.2.3.3 SIP-Aware Firewalls

Many firewall devices today understand the SIP protocol and include some type of NAT traversal or rewriting of SIP packets. When MiVoice Border Gateway is used for connecting SIP clients (sets) and trunks, Mitel recommends turning off any SIP features of the main firewall. At best, it is redundant to have two devices performing the same job. In worst cases, they interfere with each other. Use of SIP over TLS can help prevent interference from SIP-aware firewalls.

2.2.3.4 UDP Flood Protection

UDP flooding protection and VoIP applications utilizing (S)RTP do not work well together. It is recommended that UDP flooding protection in firewalls in the voice path be disabled.

2.2.3.5 Firewall Configuration Common to all Services

In a DMZ deployment, it is recommended that the administrator configure their firewall in the following way, regardless of the MBG feature set in use:

- Allow return traffic from established TCP connections
- From the server to the Internet allow traffic with
 - protocol TCP, destination port 22 (communications with Mitel AMC or SLS)
 - protocol UDP, destination port 53 (and return traffic) (DNS)
 - protocol TCP, destination port 443 to swdlgw.mitel.com (communications with Mitel Software Download Center)
 - protocol TCP, destination port 443 to swdl.mitel.com (communications with Akamai for content delivery/blades)
- From anywhere to the server allow traffic with
 - protocol UDP, destination port range 20000 to 30999 for Teleworker Network Analyzer, TFTP, voice and video
- From the server to anywhere allow traffic with
 - protocol UDP, destination port ≥ 1024 (RTP)

**Note:**

This list is not exhaustive. Refer to the sections on individual services for the required ports and protocols of each. A more comprehensive set of firewall rules is given in [Appendix A](#).

2.3 NAT Traversal to Multiple MiVoice Business Instances

Partners, that provide hosting services have the capability to deploy the Mitel Border Gateway (MBG) in a manner that supports hosting multiple MiVoice Business (MiVB) instances. For these hosting partners it is possible that different customer sites may have overlapping network ranges without NAT at the customer edge network. In this case, MBG can be used to perform NAT between the tenant sets and the Multi-instance MiVoice Business solution.

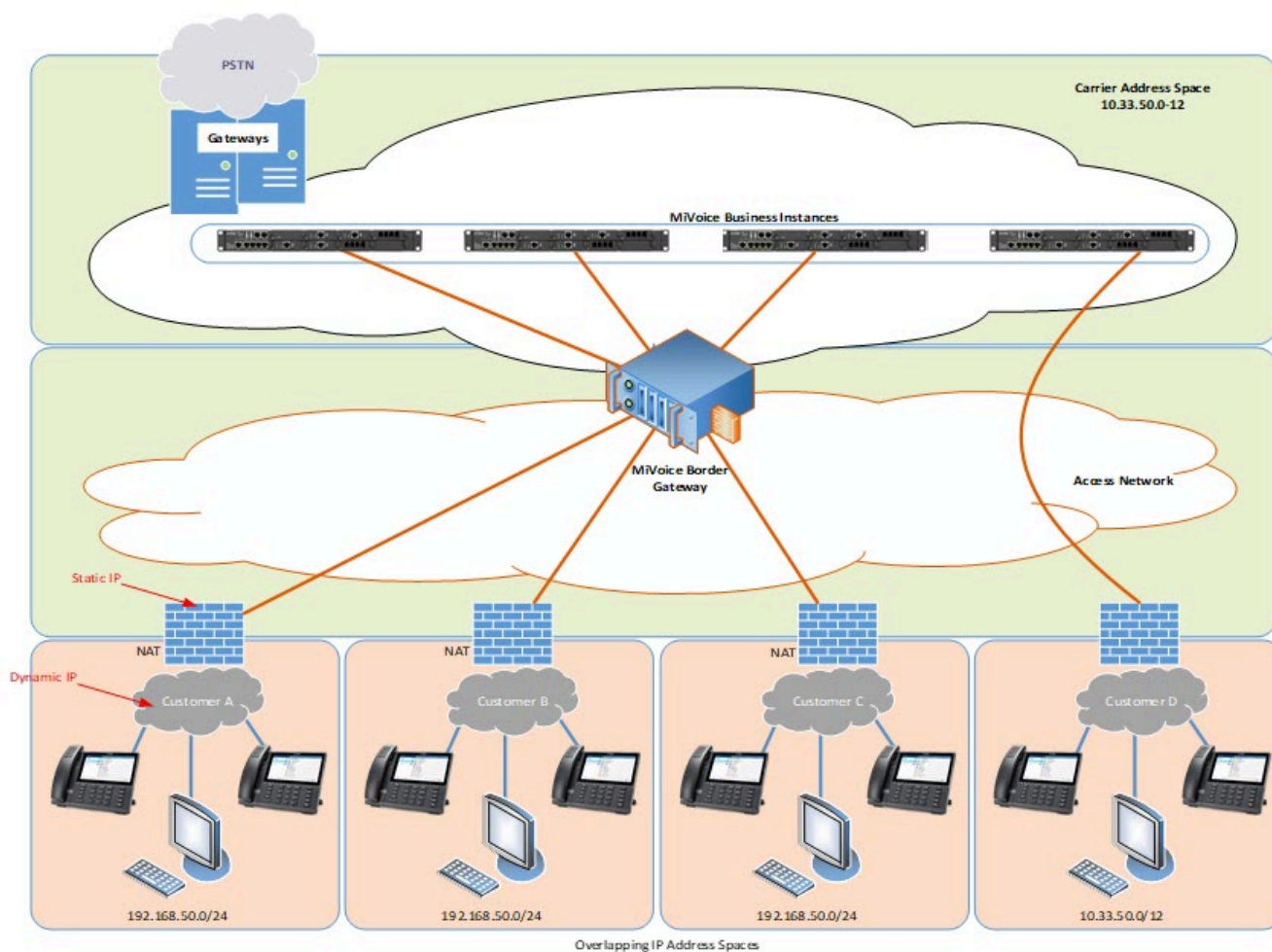


Figure 5: MBG providing NAT traversal to multiple MiVoice Business instances

2.4 Secure Gateway for Broadview Networks Silhouette HKS

The Broadview Networks hosted key system provides service to various tenants across leased lines, MPLS circuits, or the Internet from a common carrier. Customers are provided with either MiNet or SIP sets, and the MBG acts as a Session Border Controller for both protocols. DNs are unique within each tenant but may overlap between tenants.



Note:

Contact Broadview Networks to determine which MBG versions are compatible with silhouette, and for all support inquiries.

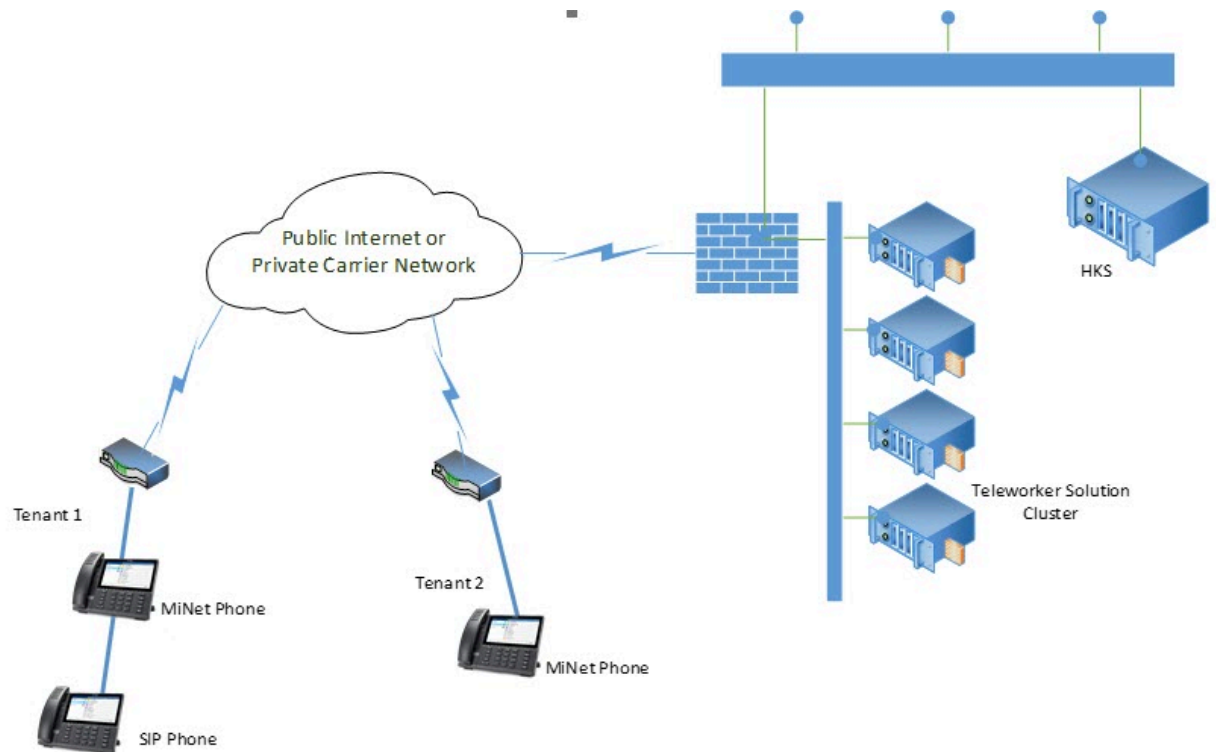


Figure 6: MBG as a Gateway for Broadview Networks Silhouette

2.5 Secure Recording Environment

When MBG is provisioned with call recording licenses, it can provide a secure media anchor for call recording. This mode is supported only in a LAN environment.

It is advisable to disable MiNet restrictions on the Mitel Border Gateway server providing call recording service, as having all LAN sets authenticate through MiVoice Border Gateway is likely not required.

Teleworker sets connected through an MiVoice Border Gateway at the network edge can be recorded as well, by configuring the edge Mitel Border Gateway such that the desired sets point to the LAN MiVoice Border Gateway as if it was an ICP.

2.5.1 MBG Deployed on the LAN for Call Recording

When possible, Mitel recommends deploying the MiVoice Border Gateway call recording server on the same LAN segment as the ICP(s) with which it will be working.

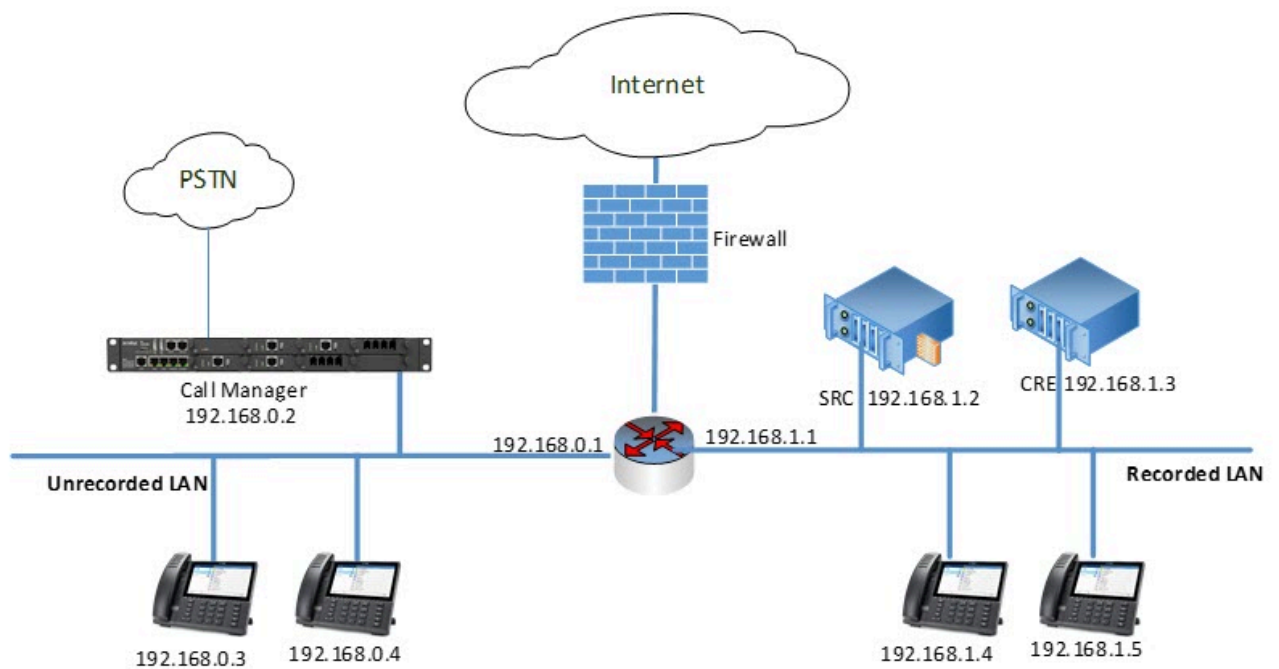


Figure 7: MBG Deployed on the LAN for Call Recording

The preceding image shows one sample configuration that could be used. IP phones that are to be recorded are on the same LAN segment as the Mitel Border Gateway server. DHCP is enabled in MSL, and MBG provides DHCP configuration such that the sets use the Mitel Border Gateway server as their TFTP server and as their ICP. Mitel Border Gateway then proxies the set registrations to the real ICP on the other segment. Sets on a different LAN segment using the MiVoice Business DHCP server are configured to connect directly to the MiVoice Business and are therefore not recordable.

MBG servers can be chained together to allow recording of remote teleworker phones. [Recording Teleworker Sets](#) shows an example of a teleworker set connecting through the edge Mitel Border Gateway to an Mitel Border Gateway server for call recording (and finally to the MiVoice Business), so that it can be recorded along with the sets on the Recorded LAN. To configure this scenario, an "ICP" entry is added to the edge Mitel Border Gateway containing the IP address of the LAN Mitel Border Gateway used for recording. All remote sets that should be recordable must be configured with that "ICP". The recording Mitel Border Gateway will then proxy the remote sets to their real ICP.

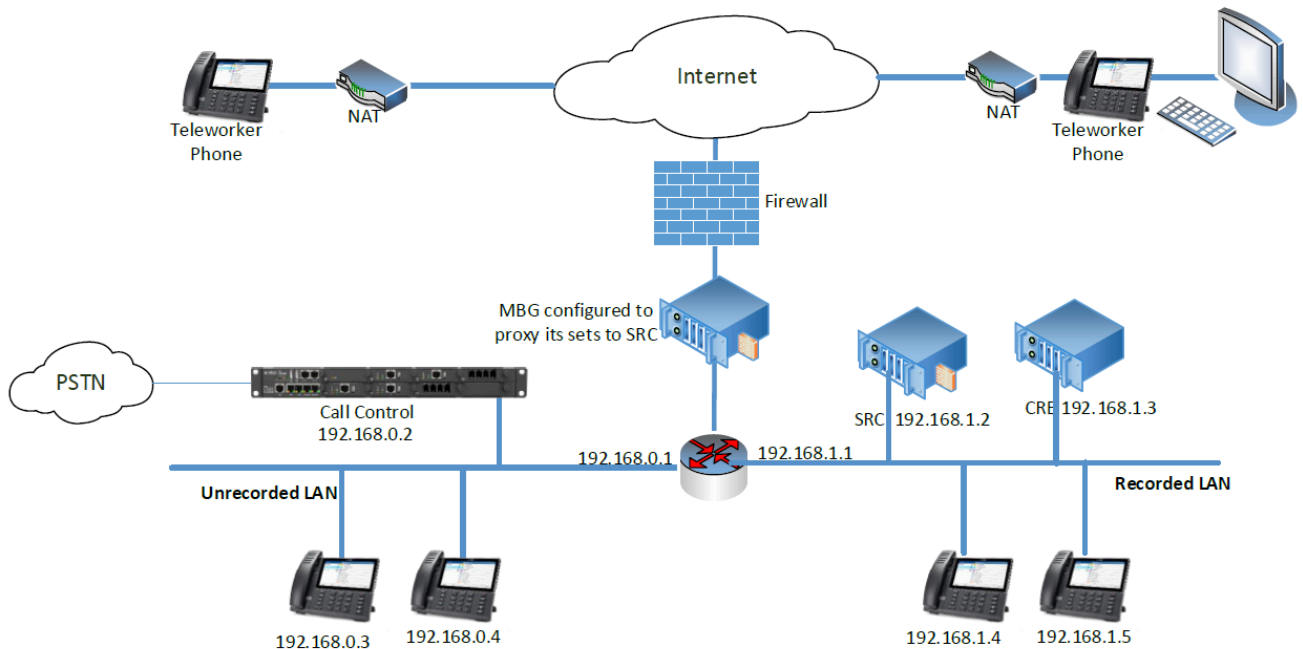


Figure 8: Recording Teleworker Sets

Note:

CIS softphone (MiContact Center) can function properly in this configuration. However, only the signaling and voice should be proxied through the call recording Mitel Border Gateway. Additional applications protocols should be proxied directly from the edge Mitel Border Gateway to the CIS server.

Warning:

This is the only supported way to have both teleworker sets and call recording of LAN sets.

2.6 SIP Trunking

MBG introduced support for SIP trunks in release 5.1. The SIP trunk is established from MiVoice Business, MiVoice Office 250, MiVoice MX-One, or MiVoice Office 400 to the SIP trunk provider, using MiVoice Border Gateway as a SIP-aware firewall and proxy, as shown in figure below. MiVoice Border Gateway's SIP trunk service provides:

- Support for encrypted audio streaming (SRTP) on the TRUNK side of MiVoice Border Gateway if the remote TRUNK provider endpoint also supports it.
- Support for encrypted audio streaming (SRTP) on the ICP side of MiVoice Border Gateway if the remote ICP endpoint also supports it.

- NAT traversal of media and signaling
- Media anchoring for the remote provider, regardless of the internal device
- SIP adaptation and normalization to improve interoperability
- Protection from malformed and malicious requests, various types of attack, and request flooding

When providing SIP trunk service, MiVoice Border Gateway can be deployed either in the DMZ or behind the customer's existing firewall.

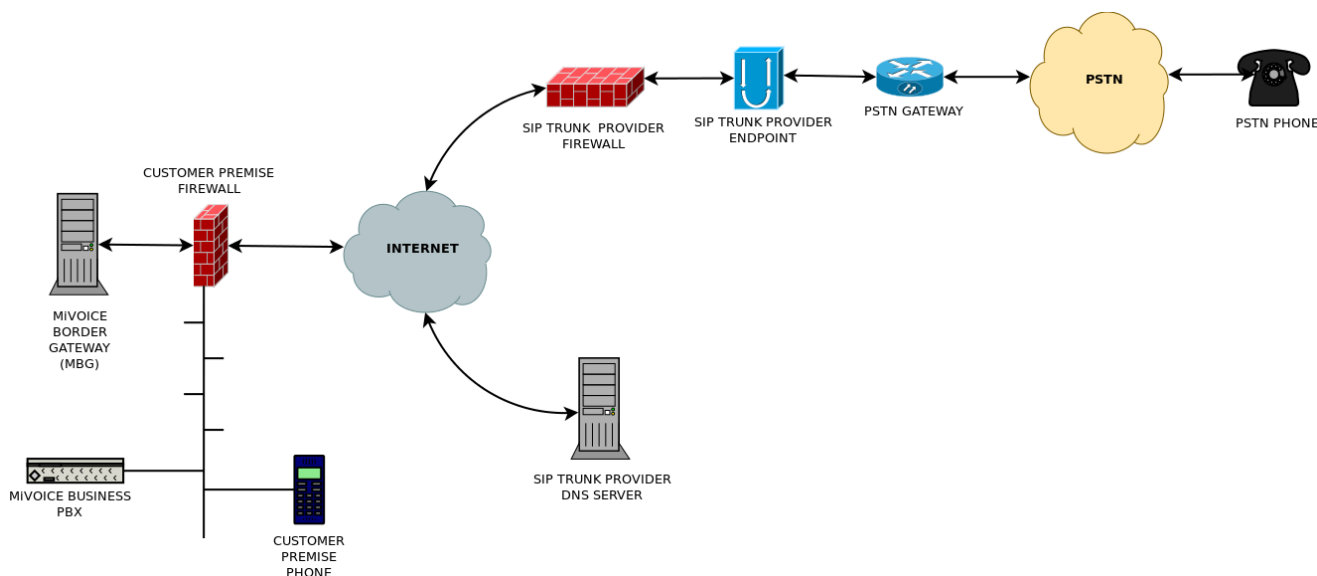


Figure 9: SIP Trunking

Some of the key benefits of using SIP trunks are:

- consolidation of capacity; all trunks come to one location, calls routed to branch offices over MPLS or VPN links already in place
- local phone numbers from anywhere in the world to permit customers to reach the company in question easily
- cost savings over PRI/T1/POTS lines
- increased resiliency with the potential for disaster recovery configuration

2.7 Daisy Chain Deployments

“Daisy Chaining” is a technique of pointing one MiVoice Border Gateway at another that can work around certain bandwidth and routing restrictions. The servers are configured such that all traffic between the sets and ICPs traverses all MiVoice Border Gateway servers in series, like following links in a chain.

Multiple standalone MiVoice Border Gateway servers are daisy chained to an ICP-connected MiVoice Border Gateway server. The upstream MiVoice Border Gateway server (closest to the ICP) provides the local streaming feature for all connected MiVoice Border Gateway servers, allowing all sets connected to these servers to communicate directly without sending the voice stream back through the upstream server.

Note:

Note: In this context, “upstream” refers to the direction approaching the ICP on the LAN.

Warning:

Daisy-chaining is only supported for MiNet phones. SIP phones, SIP trunking and remote applications such as MiCollab Client are not supported with MBG daisy-chain deployments.

The two main applications of daisy-chaining are to comply with certain IT deployment policies and to reduce bandwidth for remote sites.

2.7.1 Special IT Policy Deployment

Daisy chaining the DMZ MiVoice Border Gateway server to a LAN MiVoice Border Gateway server minimizes the scope of the firewall rules required to facilitate communications between them. The firewall administrator can permit traffic only between those two servers instead of across the entire LAN where sets may be located.

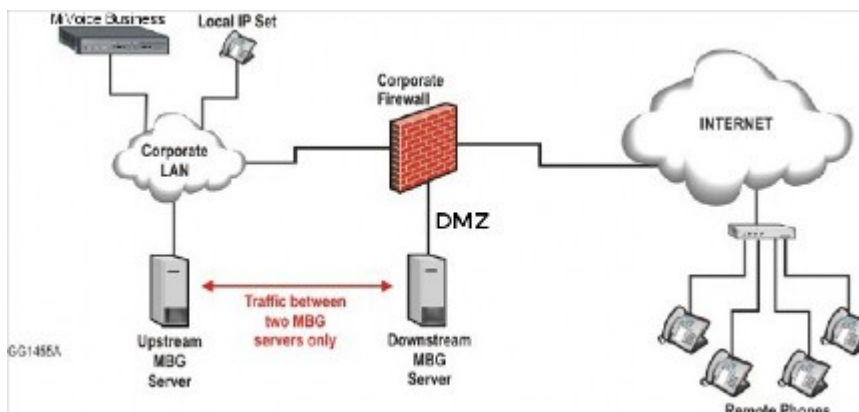


Figure 10: Daisy-chained MBGs for enhanced security

This configuration places the downstream server in the DMZ and the upstream server on the LAN. The servers should use the network profiles of DMZ mode and LAN mode, respectively.

Note:

Authentication should be disabled on the downstream (DMZ) server, and adds/changes should be made only on the upstream (LAN) server.

2.7.2 Reduced Bandwidth for Remote Sites

If MiVoice Border Gateway is providing access for a remote office environment where the users often call one another, an MiVoice Border Gateway server can be provided on site and daisy chained to the MiVoice Border Gateway server at the main office. This is not needed for MiNet to MiNet calls behind the same remote NAT because the MiVoice Border Gateway local streaming feature will handle that case. However, this deployment can be used to keep MiNet to SIP calls in the remote office. This configuration, illustrated in [Daisy-chained MBGs to save bandwidth](#), can save bandwidth on the link between the remote and main offices.

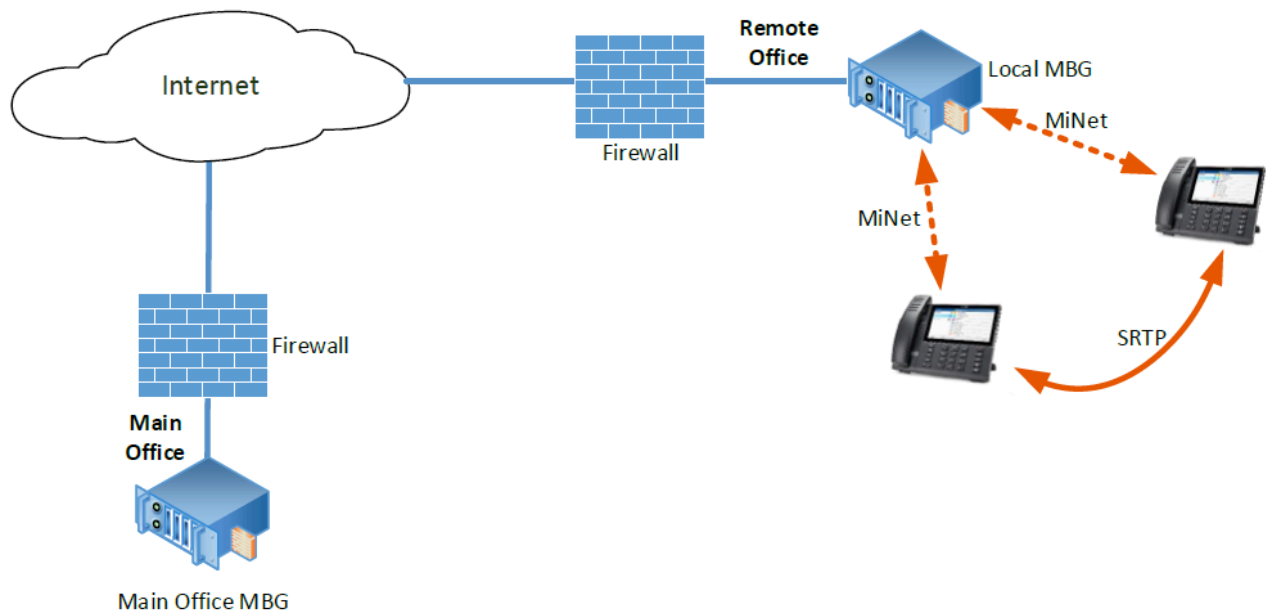


Figure 11: Daisy-chained MBGs to save bandwidth

The upstream server can be deployed in either a Gateway or a DMZ configuration.

The remote office (downstream) MiVoice Border Gateway can also be configured for either a Gateway or DMZ deployment. Note that there is no restriction on the location of the remote office sets; they do not have to be on the LAN. It may be desirable to configure certain teleworker sets to connect to remote office MiVoice Border Gateways (rather than the main office MiVoice Border Gateway) to cause direct of those teleworkers' calls to sets in the remote office. This case requires Local streaming to be enabled on the upstream (main office) server.

It is even possible to deploy multiple downstream MiVoice Border Gateway servers at different remote offices. If upstream (main office) server has Local Streaming enabled, calls within each remote office remain local to that office: signaling still flows back to the main office, but voice streams for calls between offices will only traverse the path between the two MiVoice Border Gateways. This minimizes bandwidth use on the main office's connection.

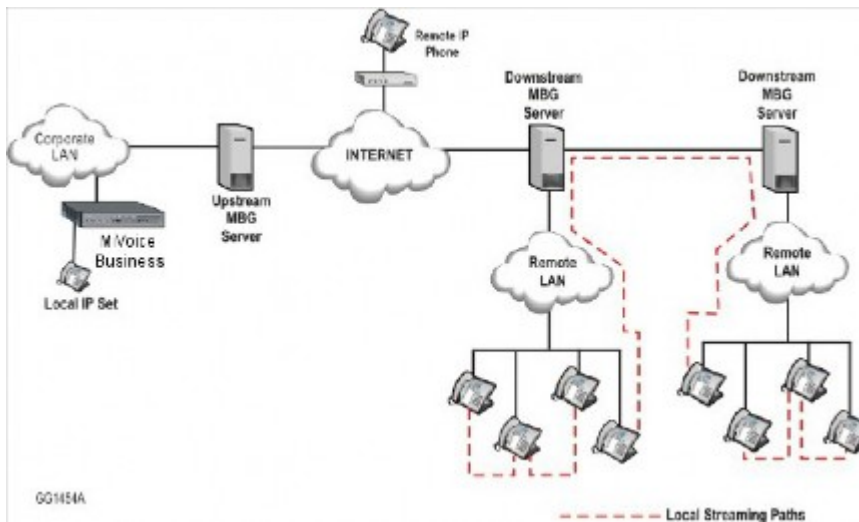


Figure 12: Multiple downstream MBGs

Note:

All MiVoice Border Gateway servers in the daisy chain must be at the same release.

Refer to the *MiVoice Border Gateway Installation and Maintenance Guide* for a full description of setting up.

2.8 MiVoice Border Gateway in MiCollab

There are two supported deployments of MiVoice Border Gateway in MiCollab: on the LAN and behind a customer's firewall. Deployment in the DMZ is not supported.

2.8.1 MiCollab on the LAN

The safest way to deploy MiVoice Border Gateway is to leave MiCollab and its applications on the LAN, and deploy a second separate server running MiVoice Border Gateway in the DMZ or in server-gateway behind an existing firewall. If centralized management is desired, the two MBG applications can be clustered. All changes made on the LAN server will be reflected on the edge MBG. Refer to the MiCollab documentation set for details on clustering MiVoice Border Gateway with MiCollab.

2.8.2 MiCollab Behind a Customer Firewall

Although Mitel recommends the dual server approach for maximum security, a single MiCollab server with all applications can be deployed in server-gateway behind an existing firewall. In this configuration, all administrative and end-user web interfaces and all services are reachable from the public network.

2.9 MBG in MiVoice Business Express

The MiVoice Business Express product combines MiCollab and MiVoice Business on one virtual machine. Refer to the *MiVoice Business Express Deployment Guide* for a description of supported **MiVoice Business Express** configurations.

Support for an additional MBG deployment configuration is introduced for MiVoice Business Express environments only because of specific IT constraints imposed by some cloud providers. For MiVoice Business Express deployments only, MBG in server-gateway behind an existing firewall is supported with the constraint that phones must not connect to the MBG from the LAN side of the firewall. That is, this configuration is only supported for phones connecting to the MBG WAN interface via the existing firewall WAN interface.

2.10 Partial Service Configurations

All MBG services are not available in all supported configurations. This section identifies for each MBG service configurations where the service is not supported at the time of writing. In some cases the service may be technically possible but not currently supported pending further testing or to reduce complexity.

MBG provides the following services:

- **Remote MiNet IP Phones**
 - Connecting to MiVoice Border Gateway in MiVoice Business Express is not supported for LAN phones.
 - Connecting to MiVoice Border Gateway in MiCollab on the LAN is not supported for Internet phones.
- **Remote SIP IP Phones**
 - Connecting to MiVoice Border Gateway in MiVoice Business Express is not supported for LAN phones.
 - Connecting to MiVoice Border Gateway in MiCollab on the LAN is not supported for Internet phones.
- **SIP Trunking**
 - Connecting to a SIP trunk service provider from MiVoice Border Gateway in MiCollab on the LAN is not supported.
- **Call Recording**
 - Connecting to MiVoice Border Gateway in MiVoice Business Express is not supported for LAN phones.
 - Recording calls with MiVoice Border Gateway in MiCollab on the network edge is not supported for LAN phones.
 - Recording calls with standalone MiVoice Border Gateway on the network edge is not supported for LAN phones.
 - Call recording is not available with MiVoice Border Gateway for the following ICP types: MiVoice Office, silhouette

- **Remote Proxy Services**

- Remote Proxy Services are not available with MiVoice Border Gateway in MiCollab.
- Remote Proxy Services are not available with MiVoice Border Gateway in MiVoice Business Express.
- Remote Proxy Services are not available with MiVoice Border Gateway for the following ICP types: MiVoice Office, silhouette.

- **Web Real-Time Communication (WebRTC)**

- Browser-based voice and video calling are not available with MiVoice Border Gateway in MiCollab Web application.

Common Requirements

3

This chapter contains the following sections:

- [Administrative Access](#)
- [Additional Trusted Local Networks](#)

This section provides general guidance common to all types of deployments and all services. Read this carefully.

3.1 Administrative Access

MiVoice Border Gateway provides a web-based management GUI for normal administration, log access, etc. This service can be accessed with any standards based browser

-

i Note:

The MiVoice Border Gateway GUI requires a browser that supports JavaScript. The built-in MSL text-mode browser does not support JavaScript and cannot be used to manage MBG.

Some troubleshooting or advanced configuration requires command-line access. SSH is the only supported mechanism to reach the MSL command line remotely. On Microsoft Windows openSSH is included with Microsoft Windows 10 or higher version (open Terminal and type “ssh”), and is included with or available for most flavors of Linux. The SSH server on the MBG should only be active when working with Mitel technical support. It should be disabled at other times.

3.2 Additional Trusted Local Networks

Additional trusted internal networks or subnets that require access to the MiVoice Border Gateway can be added via the Networks panel of the server manager. This access can be limited to individual hosts, or large network blocks can be used. In all cases, the Router property should be set to the address of the router on the subnet attached to the MSL server's internal interface.

For example, to allow access from the single subnet 192.168.12.0/24, you would enter a network of 192.168.12.0 and a mask of 255.255.255.0 in the Local Networks panel, plus the address of the router on the local subnet through which this network can be reached.

If the customer's network has multiple subnets with a common prefix, access can be allowed from the prefix. For example, if the customer uses various subnets within the 192.168.0.0/16 network, enter a network of 192.168.0.0 and mask of 255.255.0.0 in the Networks panel, and allow the local router to determine the routing to the individual subnets.

In addition to providing application access control, the Networks panel can also be used to add static routes.



Note:

: The Networks panel is a feature of MSL. Refer to the MSL documentation for a full description of its capabilities.

Remote Phone Access

4

This chapter contains the following sections:

- [Remote Site Requirements](#)
- [Firewall Configuration for Remote MiNet Devices](#)
- [Configuring MBG for Remote SIP and WebRTC Devices](#)
- [Firewall Configuration for Remote SIP Devices](#)

A major purpose of the MBG is to allow remote MiNet IP and SIP phones to connect to the office PBX over the Internet, as if they were physically in the office. Most current (and many older) models of Mitel IP sets are supported by the MBG. However, please refer to the Remote IP Phones Configuration Guide for guidance on specific models. Most SIP devices, including all current Mitel-branded SIP devices, can also be configured to work with MBG.

This section provides general guidelines for the Teleworker service. Refer to [Sizing your installation](#) to determine detailed requirements and performance limits.

4.1 Remote Site Requirements

4.1.1 Router

A set in a remote site (such as a home or branch office) is assumed to be part of a wired or wireless LAN behind a simple NAT router that provides access to the Internet, typically through a broadband modem.

Mitel IP and SIP phones generally require a 100/1000 Mbps Ethernet connection, although some models can be configured for WiFi. (Refer to the device's documentation for configuration details.) All devices expect a TCP/IP network regardless of the link-layer technology.

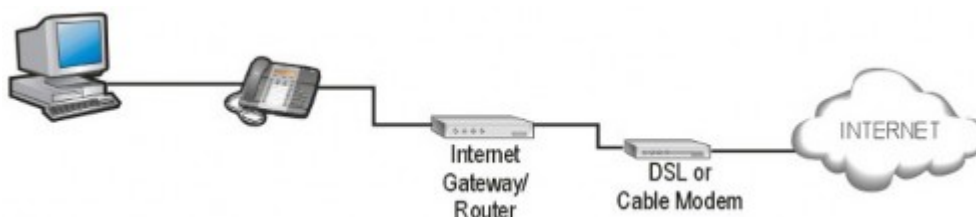


Figure 13: Example of a remote site

The remote site router must provide, at minimum:

- 100/1000 Mbps Ethernet with RJ45 connectors, for Mitel sets and connection to the Broadband modem
- NAT from the internal network to the external network
- pass through of UDP and TCP protocols, including TFTP

The router should provide DHCP service, offering at least an IP address and default gateway. However, devices can be programmed with static IP addresses and settings in the absence of DHCP.

The router may need to support Authenticated DHCP (client) when used with a cable modem, and must be configured with the user name and password provided by the ISP.

If WiFi sets are to be used, the router or a separate WiFi access point must also provide 802.11 b/g/n/AC etc.

The router must control the Internet connection in order for multiple devices to share the connection.

Note:

The remote site may have a dynamic IP address. However, if the address changes during a call, the call will drop and all devices at the site must re-register with MBG to restore service.

4.1.2 VPN Connectivity

Connecting a PC to the second Ethernet port on the back of a Mitel IP phone does not provide the PC with a VPN connection to the office network. That connection must still be made by use of the organization's supported VPN client software. This ensures that security of the corporate network is maintained when using MiVoice Border Gateway.

A gateway-to-gateway VPN can be constructed between branch offices (or homes) and the main office, if desired, such that all the PCs in the remote office have full access to the corporate LAN. However, this VPN traffic does not pass through the MiVoice Border Gateway.

4.1.3 Using an Existing VPN

Using the MiVoice Border Gateway does not affect any existing VPN client software (for example, IPSEC road warrior connection) installed on the remote PC. The PC can be connected to either the second Ethernet port of the IP phone or directly to the router and the existing software should be used as before.

Note:

VPN (for example, IPSEC) pass-through must be supported by the router at the remote site.

4.1.4 Bandwidth Requirements for the Remote Site

This section analyzes bandwidth requirements of the remote site using the MiVoice Border Gateway. Typically, there will be other requirements for Internet access, and these requirements (such as e-mail, web browsing, e-commerce) must be provisioned as well. Failure to provide sufficient bandwidth for all Internet activities may compromise the quality of service provided by the MiVoice Border Gateway.

The table below shows examples of bandwidth required for various types of remote media streams.

Table 2: Bandwidth requirements of a single remote teleworker device

| | |
|--|--|
| Voice | <p>If compression (G.729a) enabled: 24 Kbps (bi-directional)</p> <p>If compression not enabled (): 80 Kbps (bi-directional)</p> |
| MiCollab Audio, Web and Video Conferencing | 192 Kbps (bi-directional) |
| MiCollab Client Video | 256 Kbps – 1600 Kbps (bi-directional) |
| MiVoice Video Unit | 512 Kbps – 1500 Kbps (bi-directional) |

This table does not consider bandwidth requirements for PCs or other devices, which must be provisioned in addition to the IP Phone. If there is insufficient bandwidth, symptoms experienced by the IP phone user may include degraded voice quality, slow response, service interruption or loss of service. It also does not consider bandwidth requirements for additional applications. See the [Additional Application Requirements](#) section for more information.

**Note:**

A video call requires 10 to 20 times more bandwidth than a compressed audio call even when configured with the lowest bandwidth settings.

A remote MiVoice Video Unit connecting to MBG over the Internet should be configured to disable the H.264 High Profile codec and to disable the Dynamic Bandwidth Allocation option. A video conference should not be initiated from a MiVoice Video Unit on the Internet because it would serve as a bridge and dramatically increase bandwidth requirements for the call.

Video calls between MiCollab Client 6.0 and MiVoice Video Unit 2.0 are supported through MBG but they do not negotiate bandwidth at the time of writing. For example, a MiCollab Client on the Internet will receive video at the rate configured on a MiVoice Video Unit on the LAN even if the MiCollab Client is configured to use low bandwidth. This will be rectified in a future release of MiCollab Client and/or MiVoice Conference/ Video Unit.

MiCollab Audio, Web and Video Conferencing between AWW clients via the AWW server is also supported through MBG. The bandwidth usage per video stream is configurable on the AWW client. An additional consideration is that an AWW client can receive multiple video streams, one for each video participant in the conference. That number can be reduced at the AWW client by minimizing or closing video windows.

For details and current values, please see the engineering guidelines for the devices/applications referenced as examples here (available in [Mitel Document Center](#)).

Bandwidth Usage and ISP Quotas

Many Internet Service Providers set quotas on the amount of IP bandwidth per month. As an aid in predicting whether a specific quota will be exceeded, this section provides the necessary data and a sample calculation.

Assumptions:

- Signaling channel requires 1 KByte per minute (average), based on 6 calls per hour, business usage, 15 minutes per hour
- Options keepalive and Gap registration enabled for SIP, at 20s and 300s respectively

Table 3: Bandwidth usage vs time for an IP or SIP phone

| | Bandwidth Required | Hourly Usage (100%) | Monthly Usage (100%) |
|--------------------------------|--------------------|---------------------|----------------------|
| Signaling (MiNet) | 1 KB/minute | 60 KB | 43.2 MB |
| Signaling (SIP) | 1.75 KB/minute | 105 KB | 75.6 MB |
| G.711 voice stream (IP), 20ms | 80 kbps | 36 MB | 25.92 GB |
| G.729a voice stream (IP), 20ms | 24 kbps | 10.8 MB | 7.78 GB |



Note:

20ms is the default RTP frame size, but the value is configurable in the MiVoice Border Gateway administration panel.

The data in the above table can be used to:

- estimate the available call time given a quota
- estimate the monthly bandwidth requirement for a given call volume

Example 1: Estimating Available Call Time

Given an ISP quota of 2 GB/month and continuous use:

- Call hours of G.729a = $(2000 \text{ MB} - 43.2 \text{ MB}) / 10.8 \text{ MB per hour} = 181 \text{ hours}$
- Call hours of G.711 = $(2000 \text{ MB} - 43.2 \text{ MB}) / 36 \text{ MB per hour} = 54 \text{ hours}$

Given the same 2 GB/month quota, and usage of 15 min/hr, 12 hours per day, 7 days per week:

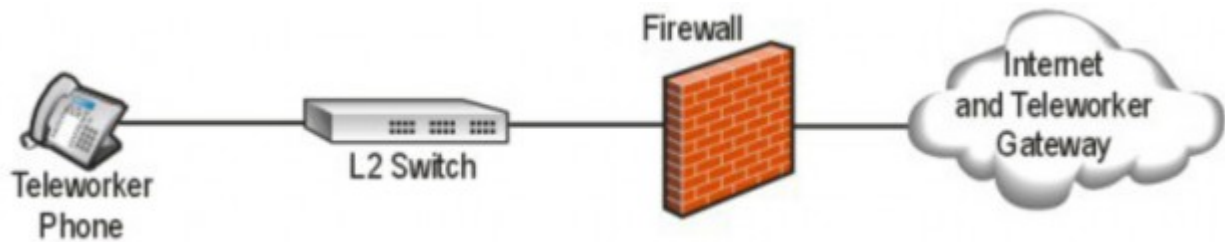
- Call hours of G.729a = (1448 hours or more than 1 month)
- Call hours of G.711 = (432 hours or roughly 18 days)

Example 2: Estimating Monthly Bandwidth Requirements

Given a user that averages 4 hours of phone calls per day, for 22 workdays in a month:

- Bandwidth Usage for G.729a = 43.2 MB + (10.8 MB x 4 hr per day x 22 days) = 994 MB
- Bandwidth Usage for G.711 = 43.2 MB + (36 MB x 4 hr per day x 22 days) = 3200 MB or 3.2 GB

4.1.5 Configuring the Remote Site Firewall



If the remote office has a firewall, it must be configured to allow the IP or SIP phone to connect through it to the MiVoice Border Gateway. The simplest approach is to permit all connections to or from the MBG's IP address. A second very simple approach is to permit all outgoing connections and any responses to them. By default, most small office and home NAT routers allow outgoing connections and responses to those outgoing connections.

Sites with more restrictive security policies may wish to use the following rules:

- Allow bi-directional TCP connections to destination port 6881 on the MiVoice Border Gateway IP Address (for 6920, 6930, and 6940 avatar support)
- Allow TCP connections to destination port 6881 for Corporate Directory Access.
- Allow a bi-directional TCP connection to destination ports 6801 and 6802 on MiVoice Border Gateway IP address
- Allow bi-directional TCP connections to destination ports 3998 and 6881 on the MiVoice Border Gateway IP address (for 5235, 5330, 5340 and Navigator set features)
- Allow incoming UDP from source ports 20000 to 30999 on MiVoice Border Gateway IP address
- Allow outgoing UDP to destination ports 20000 to 30999 on MiVoice Border Gateway IP address
- Allow bi-directional TCP connections to destination port 36008 on the MiVoice Border Gateway IP address, if using Release 6.0 or later.
- Allow incoming and outgoing UDP and TCP to port 5060 on the MiVoice Border Gateway IP address, if non-encrypted IP support is desired for SIP devices.
- Allow incoming and outgoing TCP to port 5061 on the MiVoice Border Gateway IP address, if encrypted SIP support is desired for MiCollab Client devices.

4.2 Firewall Configuration for Remote MiNet Devices

When MBG is deployed in the DMZ, the corporate firewall protecting the DMZ requires the following rules (in addition to the common rules found in [Appendix A: Firewall Configuration Reference](#)).

From the Internet to the MiVoice Border Gateway server:

- allow protocol TCP, destination ports 6801, 6802¹, 3998 and 6881²
- allow protocol UDP, destination port 20001 (and return traffic)

From the MiVoice Border Gateway server to the LAN (or just ICPs):

- allow protocol TCP, destination ports 6801, 6802, 3998, 3999 and 6881
- allow protocol UDP, destination port 20001 (and return traffic)

Note:

This is a minimal configuration. Refer to [Appendix A: Firewall Configuration Reference](#) for the full set of rules and optional settings.

4.3 Configuring MBG for Remote SIP and WebRTC Devices

This section contains guidelines on configuring MBG for remote SIP; and WebRTC devices, which is converted to a SIP device.

4.3.1 Tuning Global Parameters

The default values for all parameters assume a Teleworking installation, with SIP devices being used over the Internet. In a LAN context, these parameters will work correctly but may be slightly aggressive.

By default, every 60 seconds MBG sends an Options request message to any SIP device that is:

- Connected over UDP.
- Behind a NAT device.

You can change this configuration, globally or for individual users, with the “Options keepalives” and “Options interval” parameters. For example, to force Options requests to be sent to all SIP devices (including devices that are connected using TCP or TLS, and devices that are connected using UDP but are not located behind NAT) set the “Options keepalives” parameter to “Always” on the Settings screen. To ensure that the SIP connection is maintained on a busy network, reduce the “Options interval” from its default value of 60 seconds to 20 seconds. Alternatively, on a quiet network, you may choose to increase the “Options interval” to its maximum value of 180 seconds. Note that frequent SIP traffic is required between the set and MBG in order to maintain NAT bindings on the remote NAT router. A device that times out due to inactivity may lose its NAT binding and the ability to receive calls from MBG.

On a “quiet” network it is sufficient to disable gapped registration and raise the options interval to its maximum value (180s at this time). If all remote SIP devices send their own keepalives or re-register at an interval less than 300s, MBG’s Options Keepalives can be turned off.

¹ Port 6802 is not required for Enhanced Security mode

² The ports listed here correspond to services that have been enabled on MBG.

4.3.2 Support

While SIP clients and WebRTC devices can address MBG by its IP address, Mitel recommends the use of a fully-qualified domain name (FQDN) in the public Domain Name System (DNS) that resolves to the public IP of the MBG server.

Advantages:

- The IP address of the MBG server can be changed, and the clients will not need to be reconfigured.
- DNS can provide a certain level of resiliency in case an MBG server experiences any kind of service outage. Simply configure the FQDN to resolve to multiple MBG servers. Note that MBG cannot control how a SIP device or a WebRTC browser behaves when it receives multiple IP addresses in a DNS response. There is no automatic redirection of SIP devices or a WebRTC browser by MBG since multiple IP addresses are provided through a separate DNS service. It is possible that a SIP device or a WebRTC browser that moved to a secondary MBG may not automatically return to the primary MBG without some user or device intervention. Service will continue to be provided via whichever MBG the device is registered to.



Note:

A remote SIP message will be recognized as being addressed to MBG if the IP in the URI is one that MBG owns, or the FQDN in the URI either resolves to an IP that MBG owns, or is one of the configured “Allowed URIs” in the “SIP options” section of the Configuration tab.



Warning:

A SIP server requires functional DNS even if all devices are configured to use IP addresses instead of FQDNs. MBG is no exception. Failure to provide MBG with a working DNS resolver or preventing MBG from reaching the Internet DNS root servers can cause delays or failures in call setup.

4.4 Firewall Configuration for Remote SIP Devices

When MBG is deployed in the DMZ, the corporate firewall protecting the DMZ requires the following rules (in addition to the common rules found in [Firewalls \(DMZ deployment\)](#)):

From the Internet to the MBG server:

- allow incoming and outgoing protocol UDP and TCP to port 5060³
- allow incoming and outgoing protocol TCP to port 5061

From the MBG server to the LAN (or just ICPs):

- allow incoming and outgoing protocol UDP and TCP to port 5060

³ The ports listed here correspond to services that have been enabled on MBG.

- allow incoming and outgoing protocol TCP to port 5061

SIP over TLS (port 5061) is the default setting on MiCollab Client SIP softphones. This setting may be changed to SIP over TCP (port 5060) on the individual clients.



Note:

This is a minimal configuration. Refer to [Firewalls \(DMZ deployment\)](#) for the full set of rules and optional settings.

SIP NORMAL streaming

NORMAL streaming is the default and the most normal mode of operation for MBG service. NORMAL streaming is the standard backhauling of all media streams to MBG for forwarding to their destination. This is standard SBC behavior.

The only network requirement for NORMAL streaming is that the terminal endpoints can reach MiVoice Border Gateway's IP address for both signaling, media, and any "other" protocols that are required and supported for the operation.

This means that network routing must work and any firewall services between the terminal and MiVoice Border Gateway must permit that traffic without modification of any kind.

When MiVoice Border Gateway is used in its traditional NORMAL streaming mode it acts as a middleman performing media anchoring. Each side of MiVoice Border Gateway can be configured independently as follows:

- SRTP on both sides
- SRTP on one side and RTP on the other side
- RTP on both sides

SIP LOCAL streaming

SIP LOCAL streaming is a mode where certain calls with a terminal will bypass MiVoice Border Gateway for media streaming. It is somewhat complicated because of the complex requirements, which are dynamic and determined during the call setup. Following are the requirements of the two terminals involved in LOCAL streaming:

- LOCAL streaming is enabled, either globally or individually on both terminals.
- Both terminals must be registered to the same MiVoice Border Gateway.
- Either:
 - Both terminals must be registered with the same connection IP address if they are behind NAT (differing via addresses)
 - or
 - Both terminals must NOT be behind NAT and either both located in MSL's local networks or both on internet

- Both terminals are configured for the same media encryption. That is, both using no media encryption (AVP/RTP), or both must be using media encryption (SAVP/RTP). This requirement is not trivial, it requires consistent settings in MBG and also in the individual terminal configuration.

Note:

If LOCAL streaming cannot be achieved, then NORMAL streaming will be used.

While SIP LOCAL streaming and BYPASS streaming modes have been partially supported, MBG 11.5 SP2 improves the existing SIP LOCAL streaming and BYPASS streaming modes for improved reliability.

While these modes are separate they have identical requirements, so we refer to both of them as SIP LOCAL+BYPASS streaming mode to use a single term for simplicity.

See [Remote Phone Access](#) for all details regarding SIP LOCAL+BYPASS streaming.

SIP BYPASS streaming

MBG 11.5 SP2 introduces support for SIP BYPASS streaming mode.

BYPASS streaming is a mode where all media traffic for a terminal bypasses MiVoice Border Gateway and goes directly to the destination requested by the call server.

Essentially, MiVoice Border Gateway does not modify any media setup messages from the terminal or call server. It assumes that the terminal can stream media with its peer without MBG performing any media transfer. This mimics what call servers expect as they do not backhaul media either.

Generally speaking, this feature is useful for cases where MBG must be used as a termination point for extra features but bandwidth is a consideration.

Assuming BYPASS streaming is enabled, either globally or for an individual set, the following network requirements must be met for a terminal to be in bypass mode:

- The terminal must not be behind NAT; its connection address must match its via header.
- The other terminal in the call must be located on the MSL network

Note:

The terminal will possibly be streaming media to MBG (or any MBG in the cluster, if applicable). Therefore, media must be allowed by the network and by any firewall rules, in addition to signaling protocols. While the terminal will be bypassing its MBG for media, it will be exchanging media during a call with another, non-bypass, MBG terminal or trunk.

The *No NAT* requirement for BYPASS streaming can be achieved in the following ways:

- Split DNS can be used to point the terminal at MiVoice Border Gateway's internal (LAN) address when the terminal is located within a local network and to point to MiVoice Border Gateway's external (WAN) address when the terminal is located elsewhere.
- Network routing rules can be put in place so that MiVoice Border Gateway's external (WAN) address is routed to MiVoice Border Gateway's internal (LAN) address. In this case, any connection to MiVoice Border Gateway's WAN ip will arrive on the LAN interface and be handled correctly internally. This requires that all routers in the internal network have this routing rule configured for them.

Bypass mode for a terminal is re-evaluated by MiVoice Border Gateway on every REGISTER, INVITE, or UPDATE message received by MBG in case the terminal switches networks. This is required for mobile devices that switch between Wi-Fi and cellular data network during a call (Wi-Fi handoff).

Note:

Currently, BYPASS streaming has been verified only on the MiVoice Business call server. Therefore, only the MiVoice Business call server configuration is supported.

Note:

Beginning with MiVoice Border Gateway Release 11.5 SP2, you can configure BYPASS streaming on a per-user basis.

For SIP devices, three kinds of call flows (incoming or outgoing) are possible with BYPASS streaming:

- **SIP Teleworker to SIP Teleworker:** Between a SIP Teleworker device (currently connected to the building LAN network) and another SIP Teleworker device (also connected to the building LAN Network).
- **SIP Teleworker to SIP Internal phone:** Between a SIP Teleworker device (connected to the building LAN network) and an Internal SIP device (also connected into the building LAN network)
- **SIP Internal device to SIP Teleworker:** Between an internal SIP device (connected to the building LAN network) and a SIP Teleworker device (currently connected to the build LAN network).

SIP LOCAL and BYPASS streaming configuration requirements

SIP LOCAL streaming and SIP BYPASS streaming have near-identical requirements.

The following is an example of the configuration requirements (**DMZ Architecture Requirements**).

Failure to comply with any of the crucial items described for Local Streaming Configuration Requirements (including: MiVoice Border Gateway, Router, SIP Phone and PBX requirements) will result in:

- Best-case scenarios: automatic fallback to NORMAL streaming.

- Worst-case scenarios: call setup failures/timeouts, no audio/video, one-way audio/video, inability to place a call on hold, inability to retrieve call from hold, inability to transfer call

Ensure your deployment meets these requirements on MiVoice Border Gateway:

| MBG Requirement | Notes |
|---|---|
| Proper (audio/video) UDP RTP/SRTP port range MUST be configured on MBG (that is, MiVoice Border Gateway/Network/Port Ranges) | <ul style="list-style-type: none"> • This MBG requirement is to address the case when automatic fallback to NORMAL streaming occurs, which is always possible at any given point whether establishing a call or doing an operation on an existing one. • Port range (as per recommendation): <ul style="list-style-type: none"> • UDP AUDIO port range: 20002-29999 • UDP VIDEO port range: 30000-30999 <p>Sample port range (using default values suggested in this document):</p> <ul style="list-style-type: none"> • UDP AUDIO port range: 20002-29999 • UDP VIDEO port range: 30000-30999 |
| Both MBG SET-side + ICP-side overrides must be set to the proper router interface IP address (this can be verified by viewing the System > MBG status) | <ul style="list-style-type: none"> • The SET-side override must be set to the IP address of the WAN-side router interface (using DMZ mode). <div style="background-color: #e1f5fe; padding: 10px; margin: 10px 0;"> <p>i Note: Sample SET-side override: 1.2.3.4</p> </div> <ul style="list-style-type: none"> • The ICP-side override must be set to the IP address of the LAN-side router interface (using DMZ mode). |
| SRC call recording must be disabled | SRC call recording MUST be disabled because it cannot be used concurrently with LOCAL or BYPASS streaming. |
| SIPREC call recording must be disabled | SIPREC Call Recording must be disabled because it cannot be used concurrently with LOCAL or BYPASS streaming. |

| MBG Requirement | Notes |
|---|--|
| Global (Master) Setting – SIP Options must be enabled under System > Settings . | <ul style="list-style-type: none"> The Device <> device bypass streaming is a Core SIP option can be applied to SIP devices globally or per user. The Device <> device bypass streaming option can be used to enable/disable BYPASS streaming. The Device <> device local streaming option can be used to enable/disable LOCAL streaming. If the Device <> device local streaming option value is not selected or scenario/configuration/network requirements are not met, the streaming will revert to NORMAL streaming. This rule applies also to Device <> device bypass streaming option. |
| User-specific Settings – Edit Teleworking/SIP/ SIP profile information/< user> and select the appropriate setting for Local and BYPASS streaming between device calls under Media. | <ul style="list-style-type: none"> Global Setting – Enabled the SIP user will use the configured value of the Global BYPASS streaming setting. Enabled – The SIP user will attempt to use LOCAL streaming if the scenario/configuration/network requirements are met. Otherwise, NORMAL streaming will be used. Disabled – The SIP User will use Normal streaming unconditionally. |

Ensure your deployment meets these requirements on Firewall/Router:

| Router Requirements | Notes |
|--|---|
| For Local streaming, the firewall/router must be configured to properly forward RTP/SRTP media packets in the port range configured on MBG between the DMZ and WAN networks. | <ul style="list-style-type: none"> This requirement is to address the case when automatic fallback to NORMAL streaming occurs, which is always possible at any given point whether establishing a call or doing an operation on an existing one. Sample RTP/SRTP media port range to be allowed for forwarding between DMZ and LAN interfaces at all times (using default values suggested in this document): <ul style="list-style-type: none"> UDP AUDIO port range: 20002-29999 UDP VIDEO port range: 30000-30999 |

| Router Requirements | Notes |
|--|---|
| <p>For LOCAL streaming, the firewall/router must be configured to properly forward UDP/TCP/TLS SIP signaling packets for the ports configured on MBG between the DMZ and WAN networks at all times.</p> <p>For BYPASS streaming, the firewall/router must be configured to properly forward RTP/SRTP media packets in the port range configured on MBG between the DMZ and LAN networks.</p> | <p>Sample SIP signaling port range to be allowed for forwarding between DMZ and LAN interfaces at all times (using default values suggested in this document):</p> <ul style="list-style-type: none"> • SIP UDP: 5060/udp • SIP TCP: 5060/tcp • SIP TLS: 5061/tcp <p>This requirement is to address the case when automatic fallback to NORMAL streaming occurs, which is always possible at any given point whether establishing a call or doing an operation on an existing one.</p> <p>Sample e RTP/SRTP media port range for forwarding between DMZ and LAN interfaces (using default values suggested in this document):</p> <ul style="list-style-type: none"> • UDP AUDIO port range: 20002-29999 • UDP VIDEO port range: 30000-30999 |
| <p>For BYPASS streaming, the firewall/router must be configured to properly forward UDP/TCP/TLS SIP signaling packets for the ports configured on MBG between the DMZ and LAN networks at all times.</p> | <p>Sample SIP signaling port range to be allowed for forwarding between DMZ and LAN interfaces at all times (using default values suggested in this document):</p> <ul style="list-style-type: none"> • SIP UDP: 5060/udp • SIP TCP: 5060/tcp • SIP TLS: 5061/tcp |

Ensure your deployment meets these requirements on PBX:

| MiV5000 and MiVoice Business PBX Requirements | Notes |
|--|--|
| SIP persistent TLS signalling must be used to allow SRTP streaming | <ul style="list-style-type: none"> When using SIP UDP signalling, MiV5000 PBX supports only RTP streaming. It does not support SRTP streaming. When using SIP TCP signaling, MiVoice 5000 PBX supports only RTP streaming. It does not support SRTP streaming. For Local streaming - Attempts to use "SRTP Only" configuration when SIP UDP and SIP TCP are used as the signaling transport protocol for any SIP device will cause call setups to fail. This is not an issue with NORMAL streaming because MBG performs B2BUA role of rewriting the SDP in that example. |
| Key Press Markup Language (KPML) must be disabled | PBX KPML functionality must be disabled. This is because it cannot be used concurrently with BYPASS streaming. KPML is a method of signalling keypad presses during a SIP call (similar concept to using DTMF pads on regular analog phones). |

Wi-Fi to Wireless Wide Area (WWAN) Network Handover

A MiCollab Mobile client connecting over Wireless Wide Area Network (WWAN; also referred to as Cell data) is configured as a Teleworker.

Note:

Mitel recommends turning on Teleworker for all MiCollab Client types if the MiCollab Client is being moved from home to office (or vice versa). For Wi-Fi to WWAN handover (MiCollab Mobile Clients), as an administrator, you are recommended not to use Split DNS where the internal reference to the MBG is the LAN connection. For the handover to work smoothly, a MiCollab Mobile Client Teleworker must always reference (that is, from the Corporate DNS) the public facing port (that is, WAN) of the MBG server.

In conjunction with MiCollab Release 9.7, MiVoice Border Gateway Release 11.5 SP2 supports the option of an active softphone call on a MiCollab Mobile Client being moved from Wi-Fi to WWAN (Wireless Wide Area Network) and vice versa.

When a phone call established using the MiCollab Mobile Client softphone experiences a change/degradation in network connectivity, the MiCollab Mobile Client can move to a different network to ensure

call continuity. If the current network degrades or becomes unavailable while a softphone call is active, whether the call will handover to a different network depends on the mobile device operating system and the user's preferences (as set by MiCollab administrator for both mobile operating system and MiCollab softphone settings).

**Note:**

For more information, see the MiCollab 9.7 Release Training or documentation.

The MiCollab user in teleworker mode (uses SIP signaling and voice flow) will be traversing and utilizing the MBG platform.

**Note:**

- Wi-Fi to WWAN is not supported when a different MBG platform handles the WAN connection for a Teleworker and for a MiCollab user. There are MBG scenarios where DNS-SRV is used to identify more than one MBG with a single FQDN (used for resiliency).
- For Wi-Fi to WWAN (and vice versa) to function, the Teleworker must reference the same MBG.

MBG handles INVITE and REGISTER messages and based on the header information for the MiCollab Mobile Client softphone. MBG will be able to confirm whether the same mobile device is already involved in an established call so that the MBG can re-establish (S)RTP streams to a new IP address (to continue the call on a new network).

**Note:**

MiCollab Mobile Clients in **Teleworker** mode will consume a Teleworker license if the MiCollab Client is external to the corporate LAN.

Wi-Fi to WWAN Limitations and Feature Interactions

The following are the Wi-Fi to Wireless Wide Area (WWAN) limitations and feature interactions:

- Handovers are supported only when TLS (that is, encrypted) is used for SIP (MiCollab Mobile Client Softphones). When SIP signaling is not encrypted, some mobile data network providers modify the signaling.
- Call continuity cannot be guaranteed when network connectivity is degraded or is in an unsupported state (firewall blocking (S)RTP, insufficient bandwidth, excessive latency, and so on).

- This feature is not a replacement for fast roaming features in enterprise Wi-Fi access points or Wi-Fi infrastructure (not designed to carry VoIP).
- Handover between Wi-Fi and WWAN will follow the mobile data priority setting in MiCollab or possible Android phone vendor parameters dictated by the user. The recommended choice is to always use the Mobile data priority setting for MiCollab Mobile Client.



Note:

When the Data Network Priority setting is changed on MiCollab during a call, the Mobile Client is restarted and therefore the call is dropped.

- A Handover is a continuation of a Voice (media) session and therefore the same Voice Quality report continues after the handover. Because Voice Quality reports are generated for each media session while there is still only one media session, no additional Voice Quality reports are generated for a call that has experienced a handover.

Handover Scenarios:

The following are the handover scenarios:

- Wi-Fi to WWAN handover is supported when the same MBG handles the WAN connection for a teleworker.
 - This covers the situation where teleworker may move from the corporate office to an external destination, where the same single MBG is always used.
 - Both Wi-Fi to WWAN and WWAN to Wi-Fi handovers are assumed in this scenario.
- Wi-Fi to WWAN handover is not supported when a different MBG handles the WAN connection for a teleworker.
 - This covers the situation where teleworker may move from the corporate office to an external destination, where different MBGs are used.
 - Both Wi-Fi to WWAN and WWAN to Wi-Fi handovers are assumed in this scenario.

This chapter contains the following sections:

- [Corporate Firewall & Network Configuration for VPN Access](#)

5.1 Corporate Firewall & Network Configuration for VPN Access

The corporate office firewall may need to be reconfigured to allow other traffic from the MSL server to the internal network if the MSL server is used as a VPN server. The ports and protocols required will depend on the applications used by the client PCs and this configuration is outside the scope of this document.

More information on firewall configuration can be found in [Firewalls DMZ](#) and [Appendix A](#).

This chapter contains the following sections:

- [Overview](#)
- [Send Options Keepalives](#)
- [Bandwidth Requirements](#)
- [Resilient ICP Configuration](#)
- [Resilient Trunk Configuration](#)
- [DNS Support](#)
- [SIP Adaptation](#)
- [Firewall Configuration for SIP Trunking](#)

6.1 Overview

A “SIP trunk” in the context of MBG is simply a pair of endpoints, defined by their IP addresses and signaling ports. One of the endpoints is usually your ICP (MiVoice Business/3300 ICP, MiVoice Office 250, MiVoice MX-One, MiVoice Office 400, MiVoice Border Gateway, or Mitel 5000), and the other is your SIP provider’s firewall or SBC. These endpoints can be classified by the following modes:

- **Fixed Mode:** Pair of endpoints manually configured by the MBG administrator (addresses/ports are static).
- **SRV Mode:** Multiple endpoints automatically configured by MBG using the SIP Trunk Provider’s DNS server without any MBG administrator intervention (addresses/ports are dynamic).

A SIP trunk call now uses a single license regardless of whether it is used for Audio/Video/T.38 calls. Each SIP trunk call consumes a single license while it is active.

As an analogy, suppose an ISDN PRI link contains 23 B channels for audio and one D channel for signaling and can carry a maximum of 23 simultaneous calls. This would be equivalent to a SIP trunk with 23 channel licenses.

As of MBG 11.0:

- UDP, TCP, and TLS transports in both Fixed and SRV mode are supported.
- transport protocol translation is not performed; that is, if TCP is selected as the transport protocol on MBG, both, the ICP and the service provider must also be using TCP to match with MBG; there cannot be any mismatch on each side of MBG. For example, there cannot be UDP on one end and TCP on the other end.
- encrypted audio streaming (SRTP) is now supported in TRUNK scenarios independently on either side of MBG:
 - On the TRUNK side of MBG if the remote TRUNK endpoint provider supports it.
 - On the ICP side of MBG if the remote ICP endpoint supports it.

- The following encrypted audio streaming (SRTP) cryptosuites are supported:
 - AES_CM_128_HMAC_SHA1_32
 - AES_CM_128_HMAC_SHA1_80

**Note:**

On the MiVoice Business system, MiVoice Border Gateway is configured as an outbound proxy in the Network Element form.

**Warning:**

In the 5.X releases, the SIP trunk connector is listened on UDP port 5064 by default. As of MBG 6.0, the SIP connector can handle device endpoints and SIP trunks; therefore, UDP port 5060 is used for both devices and SIP trunks. The Legacy Connector can no longer be re-enabled as of MBG 8.0. If UDP port 5064 is in use, then you will need to contact your SIP Trunk provider to have their equipment changed to use MBG's UDP port 5060 before upgrading MBG to 8.0 or later.

**Warning:**

A SIP server requires a functional DNS even if all devices are configured to use IP addresses instead of FQDNs. MBG is no exception. Failure to provide MBG with a working DNS resolver or preventing MBG from reaching the Internet DNS root servers can cause delays or failures in call setup.

**Warning:**

RE-INVITE CONVERSION functionality is no longer supported as of MBG 11.4 -- SIP TRUNK carriers MUST now support both FASTSTART and SLOWSTART SDP offer/answer exchanges as per mandatory requirements of RFC 3261 sections 13.2.1/13.3.1 in order to correctly inter-operate with MBG.

**Warning:**

RE-INVITE FILTERING functionality is no longer supported as of MBG 11.4 -- SIP TRUNK carriers MUST now support RE-INVITES as per mandatory requirements of RFC 3261 section 14 in order to correctly inter-operate with MBG.

6.2 Send Options Keepalives

6.2.1 Fixed Trunk Mode

To maintain the availability of SIP trunks, you must configure MBG to keep the connection active by pinging the ICPs. For each SIP trunk, access the SIP trunking screen and program the following:

- Set **Options Keepalives** to **Always**.
- Set **Options Interval** to **20**.



Note:

Ensure that this configuration is implemented for a resilient trunk configuration. Otherwise, in the event that an ICP becomes unavailable, the secondary connection may not be active and calls may fail.

6.2.2 SRV Trunk Mode

SRV Mode does not use Options Keepalives as it implements Trunk resiliency by design. When using SRV Mode Options Keepalives is automatically disabled and cannot be edited.

6.3 Bandwidth Requirements

Refer to [Sizing Your Installation](#) section.

6.4 Resilient ICP Configuration



Note:

With MiVoice Business, set an **Invite Ringing Response Timer** value of **2** or **3** seconds (recommended) to fail an incoming call to the next route in the route list. The IRR value can be set under **SIP Device Capabilities**, in the **Timers** tab.

6.4.1 Configure Resiliency between the ICPs

On ICP “A”:

1. Create a Network Element Assignment for the MBG (as Type: Outbound Proxy), entering its address as a Fully Qualified Domain Name (FQDN) that resolves to MBG A and MBG B. In case one MBG fails, the FQDN enables the other MBG to be reached.

2. Create a Network Element Assignment for the SIP provider's SBC (as Type: Other).
3. Create a SIP Peer Profile for the SBC, specifying the MBG as the Outbound Proxy.
4. Program a Route in ARS, specifying the SBC as the SIP peer.
5. Program ARS Digits Dialed such that outgoing calls use the new route.

On ICP "B":

- Repeat steps 3, 4, and 5 (steps 1 and 2 are unnecessary because the network element information is shared between ICPs).

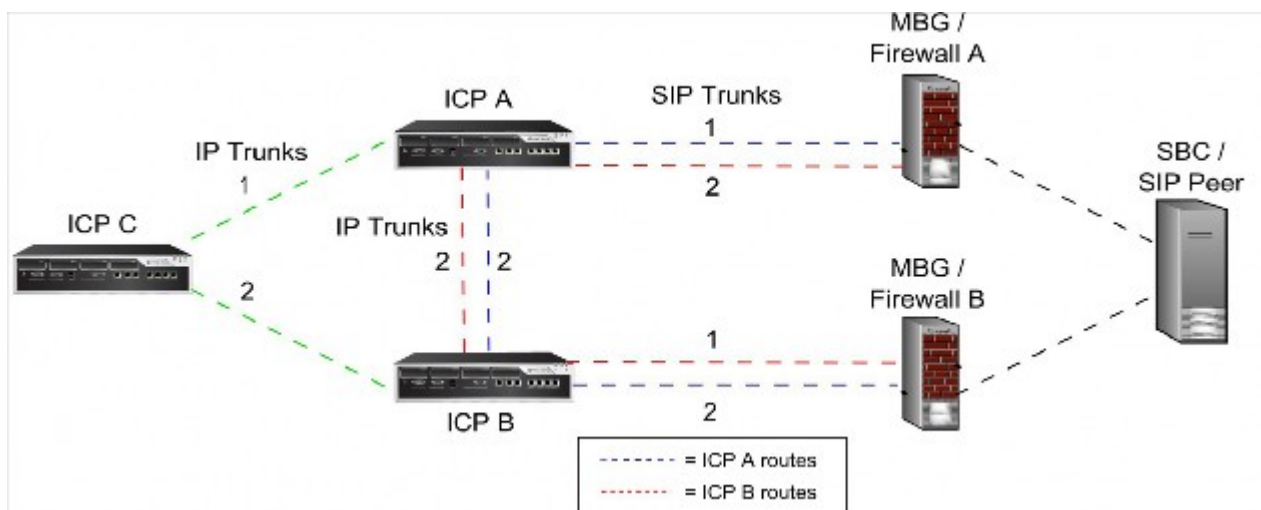
On Other nodes in the cluster (for example, ICP "C"):

- Provision each element in the cluster with IP trunks with route lists to ICP A and ICP B.

Alternative Programming

If you cannot use an FQDN to reach MBG "A" and "B", do the following to achieve resiliency:

1. On ICP A, create a Network Element Assignment for MBG A (as Type: Outbound Proxy) and another for the SIP provider's SBC (as Type: Other). Create a SIP Peer Profile for the SBC, specifying MBG A as the Outbound Proxy.
2. On ICP B, add a Network Element Assignment for MBG B (as Type: Outbound Proxy) and create another SIP Peer Profile for the SBC, specifying MBG B as the Outbound Proxy.
3. On ICP A, program a Route List in ARS with SIP peer A and a route to ICP B as an alternate. Then program ARS Digits Dialed.
4. On ICP B, program a Route List in ARS with SIP peer B and a route to ICP A as an alternate. Then program ARS Digits Dialed.



6.4.2 Configure MiVoice Border Gateway Clustering

Note:

- Beginning with Release 11.5 SP2, MiVoice Border Gateway supports MBG supports 5+5+1 cluster configuration.
- For compatibility with MiCollab 9.6, MiVoice Border Gateway 11.6 will cluster with MiVoice Border Gateway 11.5 SP2. However, if you need WebRTC functionality and have already configured the cluster between these two versions, you must use the legacy WebRTC MiVoice Border Gateway version 11.5.

1. On the master MiVoice Border Gateway, access the ICPs tab and add both ICP A and ICP B.
2. On the SIP trunking tab, configure a trunk profile for the remote SBC. Add a single routing rule of “*” with ICP A and ICP B as the targets of the rule. This configuration will propagate to the secondary MiVoice Border Gateway.

Incoming calls from the SBC will arrive at either MBG A or MBG B. From there, MBG routes an incoming call to ICP B only if ICP A is marked unavailable, unreachable, or down after failing to respond to three consecutive SIP option keepalives or to a SIP message within 32 seconds. Outgoing calls from either ICP can be routed through either MBG.

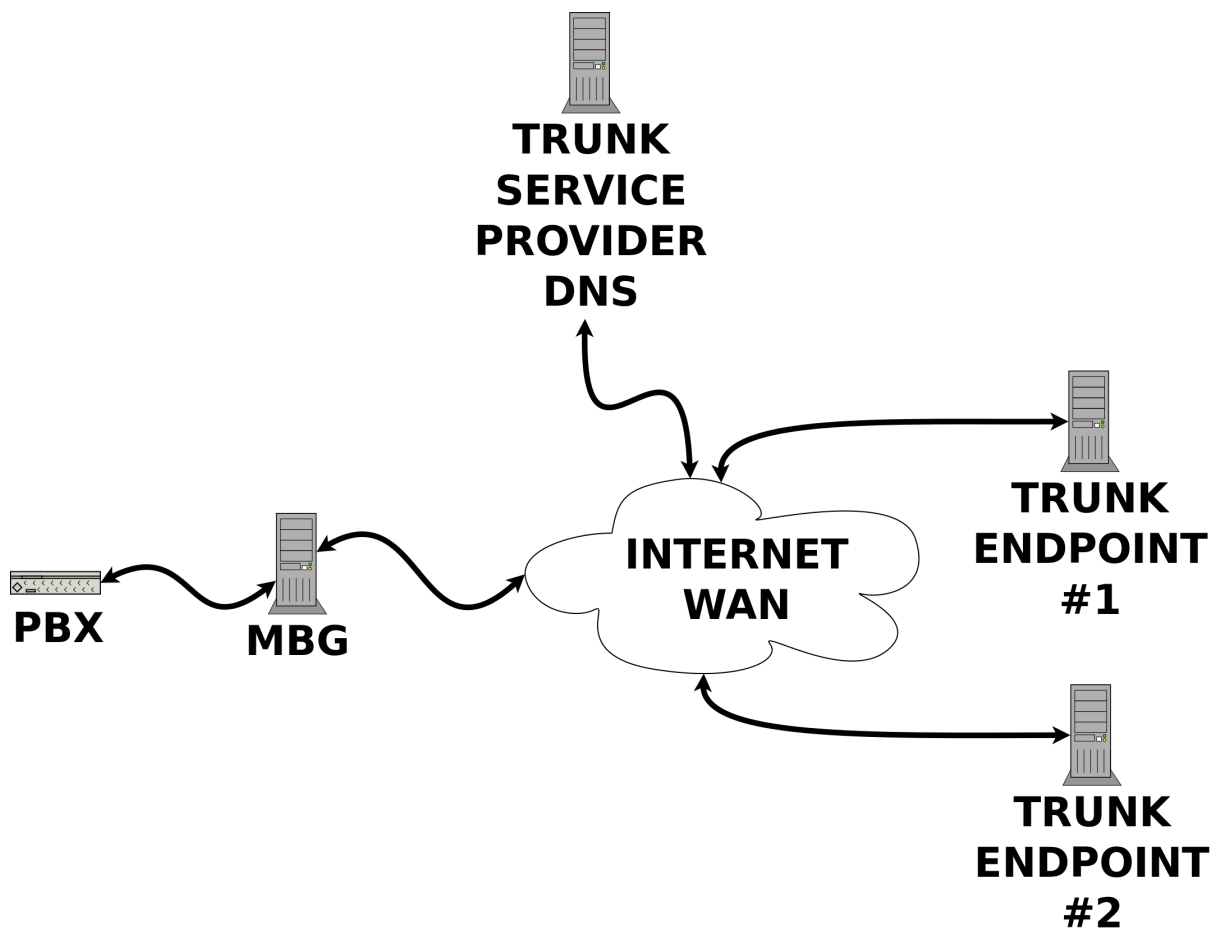
6.5 Resilient Trunk Configuration

Note:

This section applies only to SRV mode Trunking.

A basic architecture for communication between a service provider and a client involves MiVoice Border Gateway (MBG) with SIP Trunks, normally a single Trunk Endpoint. This works well until the single trunk endpoint experiences an issue, such as being unreachable because of network issues, or has hardware or maintenance issues. During this downtime, the SIP Trunk Provider cannot provide service. Thus, the architecture does not provide resiliency.

The SIP Trunk Provider can implement resiliency by providing more than one trunk endpoints. When one trunk endpoint encounters an outage, services can be provided by switching to another trunk endpoint. However, in the absence of enabling a Transport protocol, the MBG administrator must manually create a Trunk entry for every Trunk Endpoint and enter the address and port of every Trunk Endpoint.



The function of Transport protocol is to automate the provision for resiliency. Select SRV from the Transport protocol drop-down to enable MBG to use SRV Trunking Mode for the Trunk Service Provider. When this option is enabled, the Remote Trunk endpoint port and Remote Trunk endpoint address fields are automatically configured and cannot be edited.

By default, this option is set to a non-SRV value (for example, UDP or TCP or TLS), and MBG uses Fixed Trunking Mode for the Trunk Service Provider. With Fixed Trunking Mode, you will need to manually configure the Remote Trunk endpoint port and Remote Trunk endpoint address fields.

MBG does not support transport protocol translation, which means, for example, if selecting TCP as the transport protocol, the ICP end points as well as the service provider, needs to be using TCP. One end cannot be UDP and the other end TCP.

Both SRV trunks and fixed trunks must use mutually exclusive addresses - a fixed trunk cannot use an IP address (or an FQDN that resolves into an IP address) that is also listed in at least one of the records of an SRV trunk service provider that is used by MBG and an SRV trunk that is used by MBG cannot use an IP address that is listed as one for a fixed trunk.

6.6 DNS Support

While the ICP can address MBG by its IP address, Mitel recommends the use of a fully-qualified domain name (FQDN) in the public Domain Name System (DNS) that resolves to the public IP of the MBG server.

Advantage:

- The IP address of the MBG server can be changed, and the ICPs will not need to be reconfigured.



Note:

An ICP SIP message will be recognized as being addressed to MBG if the IP in the URI is one that MBG owns, or the FQDN in the URI either resolves to an IP that MBG owns, or is one of the configured “Allowed URIs” in the “SIP options” section of the Configuration tab. Typically, the hostnames you add to the “Allowed URIs” list will be for the SIP service provider’s session border controller or service domain.



Warning:

A SIP server requires DNS functionality even if ICPs are configured to use IP addresses instead of FQDNs. MBG is no exception. Failure to provide MBG with a working resolver or preventing MBG from reaching the Internet DNS root servers can cause delays or failures in call setup.

6.7 SIP Adaptation

It becomes necessary to make specific changes to the service itself for meeting the requirements of different providers to inter-operate between multiple SIP providers. One provider might want a header in a particular format while another provider wants the same header in a different format. Adding patches to the service itself in MBG to support such customized requests is not feasible because it requires too many patches to be managed.

The SIP Adaptation feature makes support for customized requests easy to implement and scalable. SIP Adaptation is done through a SIP Proxy that operates between two or more SIP endpoints. To accomplish this, a plug-in architecture was created in MBG’s core service. This architecture permits plugins to act on SIP headers in MBG’s SIP processing pipeline. An open-source scripting language, [Lua](#), originally intended for embedding in a software application to provide customizable scripting support, was used for scripting the plugins. For information about scripting the plugins, see the MBG Lua API document in the Create Pipeline page in the MBG interface.

The SIP Adaptation page displays any configured adaptation pipelines in the Pipeline information table. This table is blank until you have created pipelines. Pipelines might have a global scope and apply to all SIP traffic, or they may be tied to a particular SIP trunk. After you have created a pipeline, apply the pipeline globally across all SIP trunks, or to specific SIP Trunks.

6.8 Firewall Configuration for SIP Trunking

When MBG is deployed in the DMZ, the corporate firewall protecting the DMZ requires the following rules (in addition to the common rules found in [Firewalls \(DMZ deployment\)](#)):

**Note:**

Remember to turn off any UDP flooding protection and any SIP features of the DMZ firewall.

**Note:**

As of MBG 10.0

- SIP Trunking is supported in both UDP and TCP in FIXED MODE and in SRV MODE.
- SRTP is supported over SIP Trunks.

From the Internet to the MBG server:

- allow protocol UDP, destination port 5060 (and return traffic) or
- allow protocol TCP, destination port 5060 (and return traffic) or
- allow protocol TCP, destination port 5061 (and return traffic)

From the MBG server to the LAN (or just ICPs):

- allow protocol UDP, destination port 5060 (and return traffic) or
- allow protocol TCP, destination port 5060 (and return traffic) or
- allow protocol TCP, destination port 5061 (and return traffic)

**Note:**

This is a minimal configuration. Refer to [Appendix A: Firewall Configuration Reference](#) for the full set of rules and optional settings.

Call Recording

7

This chapter contains the following sections:

- [Requirements](#)
- [Phones/Devices](#)
- [Firewall](#)

The Mitel call recording solution encompasses multiple parts, including the MBG call recording service, a compatible call recording application, call manager platform and devices. Call recorders vary in their support of Mitel platforms and features. Configuring a solution line-up is beyond the scope of this document. Consult your recording vendor or Mitel sales engineering. Refer to the *MBG Online Help* for detailed information on the **Call Recording Service**.

MBG provides a service that allowss external Call Recording Equipment (CRE) to record audio calls:

- [Secure Recording Connector](#)(SRC): A Mitel proprietary service to record MiNET and SIP devices as well as SIP trunks.



Note:

When the WebRTC Configuration Mode is set to **WebRTC**, calls cannot be recorded.

Mitel Secure Recording Connector

The Mitel Secure Recording Connector (SRC) behaves as a server, handling authenticated connections from Call Recording Equipment (CRE) and granting access to call setup information and copies of media streams (audio only).

The SRC allows a Call Recording Equipment (CRE) to record calls in one of the following modes:

Direct Call Recording

With direct call recording, the MBG server is positioned between the call server and the devices/trunks handling both signaling and media. This puts the MBG in a position to send a copy of the media streams to the CRE on request.

Indirect Call Recording

With indirect call recording, the remote devices are registered directly to MiVoice Business instead of the MBG. MBG acts as a broker between the call recorder, platform and devices. The device duplicates its audio stream and sends it to the CRE.

7.1 Requirements

This section contains software/hardware requirements necessary to support the Secure Recording Connector service.

7.2 Phones/Devices

For a complete list of devices that are supported by the secure recording connector service of MBG, please refer to the *MBG Remote Phone Configuration Guide* available at Mitel Document Center.

7.3 Firewall

The direction of the arrow indicates permission to initiate new traffic in that direction. These rules assume a stateful firewall that will permit return traffic on an existing established connection.

The following connections must be configured:

| Port Range | Direction | Purpose and Details |
|--------------------|---------------|--|
| For SRC | | |
| TCP 6810 | LAN ->Server | Call Recording Support. To enable a third-party call recording equipment (CRE) server to connect to the SRC control interface on MBG, this port must be enabled. |
| TCP 6815 | Server ->ICPs | Indirect Call Recording support (Optional). To enable MBG to connect to the Indirect Call Recording connector on MiVoice Business systems which support it. |
| UDP 35000 to 35999 | Server ->LAN | Voice Recording. For streaming voice streams from the MBG server to the CRE for recording purposes. |

Web Real-Time Communication (WebRTC)

8

This chapter contains the following sections:

- [WebRTC Gateway Supported Configurations](#)
- [WebRTC Architecture and Topology](#)
- [Firewall Configuration for WebRTC Gateway](#)

WebRTC is an API definition drafted by the World Wide Web Consortium (W3C) that provides browsers and mobile applications with Real-Time Communications (RTC) capabilities. MBG supports WebRTC for browser-based voice and video calling without the need of plug-ins using Google Chrome, Mozilla Firefox and Opera on all platforms except iOS.

See [Configuring MBG for Remote SIP and WebRTC Devices](#) on page 28 for guidelines on configuring MBG for remote SIP; and WebRTC devices, which is converted to a SIP device.

8.1 WebRTC Gateway Supported Configurations

The WebRTC application offers a toolkit which you can use to add secured communication components to enterprise web pages. Two usage scenarios are available, for "anonymous" and "subscriber" calls.

Anonymous Call: In this scenario, SIP authentication is required. To do so, go to the System tab and click Settings, and under SIP options, in the WebRTC mode field, select either Anonymous or Both. The user, who is known as an "anonymous caller," is directed to an internal service such as a sales or product support hotline.

Subscriber Call: In this scenario, an external user logs in to MBG from a browser and then registers with the ICP. The user, who is known as a "subscriber," can perform a variety of tasks, such as looking up names in the company directory, accessing voicemail, and both placing and receiving calls.

8.1.1 ICP Support

The WebRTC gateway can be implemented with MiVoice Business, MiVoice MX-ONE, MiVoice Office 400, or MiVoice Office 5000 ICP. With a MiVoice Office 400, users can place anonymous calls over a SIP trunk. With a MiVoice Business, MiVoice Office 5000, MiVoice MX-ONE, users can place anonymous calls over a SIP trunk or log in as subscribers in order to place and receive calls and access the company directory from an LDAP database.



Note:

The WebRTC is only supported for IPv4.

8.2 WebRTC Architecture and Topology

The WebRTC solution consists of a gateway and a web application.

WebRTC Gateway (on MBG)

The WebRTC gateway is co-located with MBG and has two interfaces, LAN and WAN. The gateway has three complementary modules:

- **Web services:** Facilitates directory searches on the LDAP database.
- **SIP proxy:** Relays SIP signals between WebRTC clients and the ICP.
- **Media adaptor:** Relays media streams between WebRTC and LAN-based clients. Adapts formats (DTLS, codec).

WebRTC Web Pages (on Web Server)

A web server is required to host the WebRTC web pages. Although the web server can be co-located with the MBG, more typically it is hosted on a standalone system.

Default web pages are provided by MBG. These can be used without modification, or new web pages can be created that match the look and feel of the customer's website.

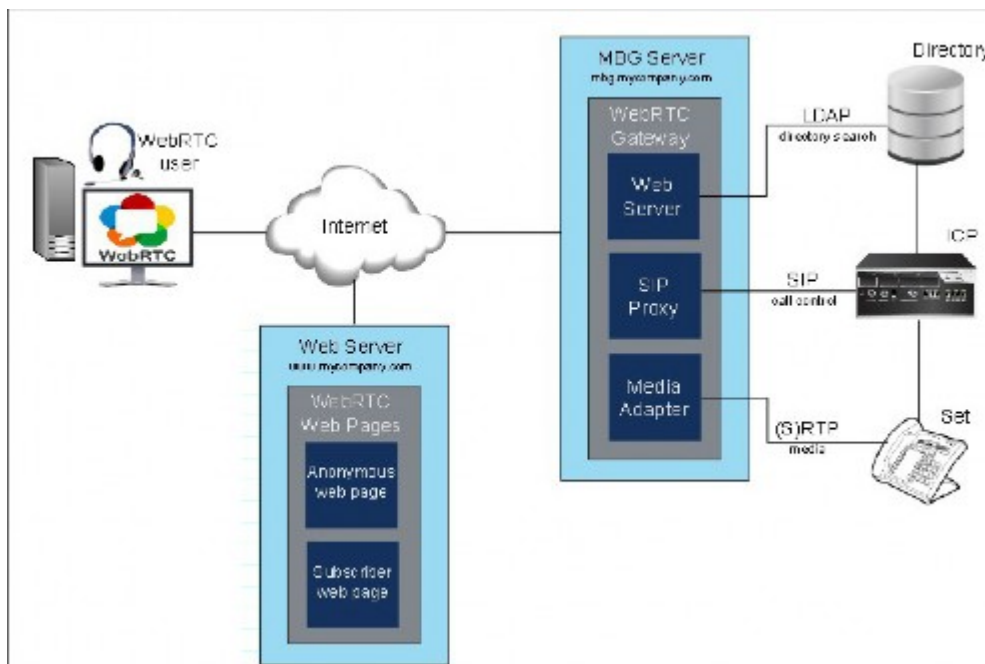


Figure 14: WebRTC Gateway and Web Pages Topology

8.3 Firewall Configuration for WebRTC Gateway

From the Internet to the MBG server:

- allow protocol TCP, destination port 5063 for SIP over TLS
- allow protocol UDP, destination ports 32000 to 32500 (and return traffic) for RTP media

From the MBG server to the LAN (or just ICPs):

- allow protocol TCP, destination port 389 for connection to LDAP database (MiVoice Business, MiVoice MX-One, MiVoice Office 400, or MiVoice 5000 manager)
- allow protocol TCP, destination port 443 for connection to picture server (MiVoice Business, MiVoice MX-One, MiVoice Office 400, MiVoice 5000 manager, or dedicated picture server)
- allow protocol UDP, source port 5064 for unencrypted SIP trunk connection to MiVoice Business or MiVoice 5000 (anonymous calls)
- allow protocol TCP, source port 5065 for encrypted SIP trunk connection to MiVoice 5000 (anonymous calls)
- allow protocol TCP, source port 5066 for encrypted SIP user connections to MiVoice 5000 (subscriber calls)

From the MBG server to the LAN:

- allow protocol UDP, source ports 33000 to 33500 (and return traffic) for RTP media

Additional Application Requirements

9

This chapter contains the following sections:

- [MiCollab Client v6.0+](#)
- [MiContact Center](#)
- [Web Proxy](#)
- [MiCollab AWW Conferencing](#)

MBG allows the use of several supported applications from remote sites, just as it allows use of IP phones. When MBG is deployed in the DMZ of a third-party firewall, that firewall must be configured to allow connections from these applications.

This section, plus the common rules in [Firewalls \(DMZ deployment\)](#), gives a minimum configuration for each supported application. Refer to [Appendix A: Firewall Configuration Reference](#) for the full set of firewall rules.

For details on integration and configuration of CloudLink see [CloudLink Gateway User Guide](#).

9.1 MiCollab Client v6.0+



Warning:

MBG 7.0 required a port-forwarding rule for port 36008 that directed traffic to the MiCollab Client server. After upgrading to MBG 7.1 or higher, this rule must be removed from the MSL Port Forwarding panel.

The following additional rules are required, excluding the MiCollab Client softphones:

From the Internet to the MBG server:

- allow protocol TCP, destination port 36008

From the MBG server to the LAN:

- allow protocol TCP, destination ports 443, and 36008



Note:

When the MiCollab Client server is behind MBG, remote MiCollab Clients require access via Web Proxy for MiCollab Client 5.1 and above. See [Web Proxy](#) for additional firewall rules.

MiCollab Clients also include MiNet and SIP softphones. For additional firewall rules covering the MiCollab Client softphones see [Firewall Configuration for Remote MiNet Devices](#) and [Configuring MBG for Remote SIP Devices](#).

You can choose to have MBG present a built-in Mitel certificate or a trusted third-party certificate uploaded in the MSL Web Server panel to SIP TLS connections (TCP 5061). The default is Mitel certificate.

**Note:**

Changing this setting breaks the trust model with the existing clients, which results in failures to connect until redeployment. Particularly, the MiCollab Client Deployment profile setting for TLS server certificate validation must match the MBG setting, such as,

- If the MBG setting is "Mitel", the deployment profile setting for TLS-server-certificate CA must be Mitel CA.
- If the MBG setting is "Web server", the deployment profile setting for TLS-server-certificate CA must be Public CA.

9.2 MiContact Center

The following additional rules are required:

From the Internet to the MBG server:

- allow protocol TCP, destination ports 35001 – 35008 (inclusive), 36000 – 36004 (inclusive)

From the MBG server to the LAN:

- allow protocol TCP, destination ports 80, 443, 1443, 5024 – 5026 (inclusive), 5030, 7001, 7003, 8083, 8084, 8188, 42440

9.3 Web Proxy

The following additional rules are required, at minimum:

From the Internet to the MBG server:

- allow protocol TCP, destination port 443

From the MBG server to the LAN server:

- allow protocol TCP, destination port 443

9.4 MiCollab AWW Conferencing

In addition to rules under Web Proxy for HTTPS traffic, MiCollab AWW Conferencing requires passthrough of its ConnectionPoint traffic. This is supported with either:

- an additional dedicated external IP address on TCP port 443 or
- a dedicated TCP port on the primary external IP address

9.4.1 Additional Dedicated External IP Address on TCP Port 443

In this configuration, the MiCollab AWV Conferencing server is usually configured with the internal port as 4443 and the external port as 443 in the Web Conferencing Setting page. The configured Web Conference Name fully qualified domain name (FQDN) must resolve externally to the dedicated external IP address. Following are the required rules:

From the Internet to the Firewall:

- allow protocol TCP, destination port 443 on the MiCollab AWV Conferencing IP address

From the Firewall to the Web Proxy (MBG):

- allow protocol TCP, destination port A, where A is the listen port for MiCollab AWV Conferencing configured by the administrator

From the Web Proxy (MBG) to the MiCollab AWV Conferencing server on the LAN:

- allow protocol TCP, destination port 4443

Note:

The configuration method using two external IP addresses is helpful in preventing connectivity issues that may arise where AWV Clients are behind a corporate firewall with rules for outgoing traffic, where those rules may only allow web-based ports to be reached at a remote location. For example, a remote user is more likely to be able to make a connection to a server outside of their network using port 443, than port 4443.

9.4.2 Dedicated TCP Port on the Primary External IP Address

In this configuration, the MiCollab AWV Conferencing server must be configured with the same internal and external port, recommended is 4443. The configured Web Conference Name must resolve to the public IP of MBG and can be the MiCollab FQDN. Following are the required rules:

From the Internet to the MBG server:

- allow protocol TCP, destination port 4443 (or the external port configured on MiCollab AWV)

From the Web Proxy (MBG) to the MiCollab AWV Conferencing server on the LAN:

- allow protocol TCP, destination port 4443 (or the internal port configured on MiCollab AWV)

**Note:**

The single IP address configuration will avoid the additional usage of a dedicated IP address (useful when IP addresses are expensive or simply not possible), however it should be noted that some external users sitting behind a firewall with restricting outgoing traffic rules at ports other than 80 and 443 may experience connectivity issues.

This chapter contains the following sections:

- [SIP Security](#)

Due to the broad range of application types that can be deployed on the MSL operating system (formerly Managed Application Server), Mitel suggests that you read the **Security** section of the *MSL Installation and Administration Guide* before installing this application on the same server with other applications.

10.1 SIP Security

MBG supports the following forms of SIP security:

- Transport Layer Security (TLS) on both, the SET side and ICP side, with the option to present a Mitel built-in or a trusted third party certificate. TCP/TLS encrypts signaling between SIP devices, and is recommended if you enable set-side SRTP security.
- Secure Real-time Transport Protocol (SRTP) on the ICP side as well as the SET side. SRTP provide encryption, message authentication and integrity for the media stream between SIP devices and MBG.
- As of MBG 10.1 SRTP is supported for both TeleWorker SETs and TRUNK scenarios.
- As of MBG 11.0, SIP signaling for TRUNK scenarios is supported for all of UDP or TCP or TLS transports in Fixed and SRV mode.

This chapter contains the following sections:

- [Overview](#)
- [Cluster Zones](#)
- [Node Weighting](#)
- [Additional Considerations](#)
- [Firewall Configuration for Clustering](#)

11.1 Overview

Clustering in this context refers to the ability of multiple MBG servers to communicate with one another via TCP, sharing data and providing the capability to manage multiple nodes thus joined as if they were a single unit.

Clustering also provides load balancing for supported MiNet devices, making the job of distributing devices across servers to share workload simple and effective. Set resiliency is also used within clustering, so that supported MiNet sets which can persistently store up to four IP addresses will have their resiliency list populated based on the cluster members. If a set loses its connection and cannot reconnect to its own node, it will try the next IP address on its list until it has exhausted all IP addresses on the resiliency list.

Clustering relies on a mesh of TCP connections between the nodes in the cluster. TCP port 6809 must be reachable between all nodes for cluster comms to be established. SSL/TLS is used to encrypt communications, so it is safe to use over the Internet.

Administrative access to each server in the cluster is required to establish a trust relationship between the nodes. The trust model is based on the IP addresses used to establish cluster comms. Each node is configured via the clustering tab to trust a connection coming in from a particular IP address. These addresses are shared across the cluster, so they must be reachable by all nodes involved, and any use of NAT will break the trust model. A summary of the steps to create a three-node cluster are shown below. Refer to the MiVoice Border Gateway Blade Installation and Maintenance Guide for full instructions on creating a cluster.

- Create the cluster from the master node, entering the IP address of the first slave node.
- Join the cluster from the first slave node, entering the IP address of the master node.
- Assuming no networking issues, the clustering tab will show established connections, and the slave node will show a backlog of events from the master (or it will finish too quickly to be seen).
- Add a node on the master, entering the IP address of the second slave node
- At this time, the first slave will receive the same data regarding the second slave via cluster comms.
- Join the cluster on the second slave, entering the IP address of the master node.
- Assuming no networking issues, the clustering tab on all nodes should show the peer nodes for that node.
- The three node cluster is now established.

Note:

You can transform any member of a cluster into the master node. To do this, access the Clustering tab of the selected slave node and then click **Take Ownership**.

Once cluster communications are established, the master node will “push” data to the slaves until they are in sync with the master. Conflicting data is overwritten. When a slave joins the cluster, its existing database is deleted and a new database is provided by the master.

11.2 Cluster Zones

Note:

Beginning with Release 11.5 SP2, MBG supports MBG supports 5+5+1 cluster configuration.

A cluster zone is a non-overlapping subset of nodes within an existing cluster. All nodes start out in the “Default” zone. The “Default” zone can be renamed but it cannot be deleted. It is easily identified because it appears first in the zone list, and has no “delete” link. Nodes can be left in the default zone if additional zoning is not required.

Additional zones can be created, and nodes can be moved to any zone. Zones can be created based on geographic location, the intended purpose for the nodes, or whatever reason the admin chooses. The purpose of zones is to provide device affinity.

By default all MiNet sets will be associated with the default zone. By editing the set, the set may have its affinity changed to a different zone. The implications of this are as follows:

- A set’s load-balancing list of nodes will always favor nodes in its zone
- The last entry in the load-balancing list will be a node from the default zone

This feature was introduced to support geographically dispersed clusters. For example, if there are three servers in North America and three in Asia, it makes little sense for Asian sets to be load balanced to North America unless all of the Asian servers are unreachable. Using cluster zones, a “North America” zone and an “Asia” zone could be created, and sets in Asia could be placed into the Asian zone. The sets in each region would then prefer the nodes in their region, reducing network latency and bandwidth use.

Similarly, zones can be created to segregate devices by function, such as keeping trials users on a separate node from regular users, or to split users by organizational group.

11.3 Node Weighting

Not all servers are created equal. If the hardware in the cluster is all equivalent, it is safe to leave the weight of each node in the cluster at its default value of 100. This ensures evenly-distributed load balancing.

To inform the cluster that a given node should handle more than an equal share of the load, increase its weight. If the server should handle less, lower the weight. For instance, assume there is a cluster of three nodes with weights of 50, 50, and 100. The two smaller servers (lower weights) will each handle roughly one quarter of the total load, while the third server handles the remaining half of the load.

Weights are not percentages⁴; they are simply a ratio of relative server power. Weights of 100,100,100 are equivalent to weights of 1,1,1. However, if the sum of all weights is 100 (or close to it), they can be treated as percentages of the total load and the system will behave as expected.

A weight of zero prevents any devices from connecting and will cause MBG to move all connected devices to other nodes.

Expressed mathematically, the above is simply: $\text{sets_on_a_node} = \text{total_sets} \times (\text{node_weight} / \text{sum}(\text{node_weights}))$

Note:

The distribution of devices will not be mathematically perfect. Some hysteresis is built in to the load-balancing algorithm to prevent devices from being redirected too often in a vain attempt to perfectly balance the cluster.

Note that weighting applies to zones, not to clusters. The “total load” is the load from devices configured with the same zone as the node. (In a cluster with only the Default zone, this distinction can be ignored.)

As an example, consider a cluster with five nodes and two zones. Two servers are in the “North America” zone and two servers are in the “Asia Pacific” zone. The remaining server is left in the Default zone.

The two North America servers are identical and have weights of 10. Each one will handle roughly one half of the total load of devices configured for the North America zone. One of the Asia Pacific servers is new and has more capacity; it has a weight of 20 and the other server has a weight of 10. The newer server will handle twice as much load (roughly two thirds) as the other server (one third). The fifth server handles 100% of the load in the Default zone, regardless of its weight.

Warning:

Not all devices can be load-balanced. See [Additional Considerations](#) for details.

11.4 Additional Considerations

While heterogeneous server capabilities are supported in a cluster thanks to the weighting mechanism, this weighting only affects the number of connected devices on each server. The cluster communications adds additional load on each server, so adding a node to the cluster does not, necessarily, linearly increase the capabilities of the cluster.

⁴ Note that using “total_sets = 100” in the formula below gives the percentage of total load handled by one node.

Furthermore, if the master node is used as the initial point of contact for all devices, then it should not be a “weak” server. There are many supported devices that do not support redirection, so the server they are programmed to contact will be the only server that they connect to. Setting a low weight on the main node will not change this. All SIP devices, MiNet softphones, and 5550 IP Console fall into this “non-redirectable” category. Such devices must be balanced manually by programming the devices to contact specific nodes. Setting a low weight, or a weight of zero, on nodes that handle non-redirectable devices can help with manual load balancing.

11.5 Firewall Configuration for Clustering

When MBG is deployed in the DMZ, the corporate firewall protecting the DMZ requires the following rules (in addition to the common rules found in [Firewalls \(DMZ deployment\)](#)):

From each MBG server to all other MBG servers in the cluster:

allow protocol TCP, destination port 6809



Note:

Note: This is a minimal configuration. Refer to [Appendix A: Firewall Configuration Reference](#) for the full set of rules and optional settings.

This chapter contains the following sections:

- [Resiliency](#)
- [IP Translations](#)
- [Streaming Addresses](#)
- [RTP Frame Size](#)
- [TFTP Block Size](#)
- [Compression Codecs](#)
- [SRTP Port Range](#)
- [DSCP](#)

12.1 Resiliency

MiNet devices are protected with two forms of resiliency: "Run time" and "Boot time".

12.1.1 Run Time Resiliency

Run time resiliency is required in case a MiNet device becomes disconnected from its current node due to a network problem or the node going offline. Should this occur, the device will attempt to reestablish a connection by consulting a "redirect list" of up to four IP addresses that it has received from MBG. The redirect list is comprised of the following:

- the device's current node
- up to two random, currently connected nodes in the device's own cluster zone
- one random, currently connected node in the backup zone (if a backup zone has not been defined, the Default zone is used instead)

For example, if the device is currently connected to MBG1, and MBG1 is taken offline for maintenance, calls that are in progress will be dropped (unless they are locally streamed) and the device will immediately consult the redirect list and attempt to reestablish the connection. First it will try to connect to MBG1, but because MBG1 is offline this attempt will fail. The device will then attempt to connect to up to two other nodes in its own cluster zone. If these attempts fail, finally the device will attempt to connect to a node in its backup cluster zone. ;

Note:

- Run time resiliency can only be used in a clustered environment.
- The redirect list is considered a "soft" list because it is stored in RAM. ;
- MBG re-sends the redirect list to MiNet devices whenever they are started or rebooted, and whenever the cluster configuration changes.
- The resiliency assignments do not in any way bind a given device to a specific node. Devices that do not support redirection (a subset of MiNet devices, plus any SIP devices) will stay with the server to which they initially connected. Clustering load balancing does consider devices that cannot be redirected.

12.1.2 Boot Time Resiliency

When any MiNet device (including a non-clustered device) starts or reboots, it employs boot time resiliency to connect to its own, local MBG. It does this by checking its network configuration, which stored in non-volatile FLASH memory, and employs this to search for MBG. The network configuration is comprised of the following:

- **Resiliency List:** An optional; Resiliency List; of up to four IP addresses can be configured on MBG and sent to 53xx Series IP Phones. In a clustered environment, these addresses are typically for nodes belonging to the device's own cluster zone.
- **Teleworker IP:** MiNet devices operating in teleworker mode will have a Teleworker IP address (programmed by pressing 7 key on bootup on most phones).
- **DHCP:** If the device does not have a Resiliency List or Teleworker IP, DHCP is used to obtain an IP address.

For example, when a user reboots her MiNet device, the device will first check whether it has received a Resiliency List. If the list has not yet been configured or downloaded, the device will then check whether it has a Teleworker IP address. If the Teleworker IP address has not been configured, the device will obtain an IP address from a DHCP server. ;

Note:

- Boot time resiliency can be used in either a clustered or non-clustered environment.
- In a clustered environment, Mitel recommends populating the Resiliency List with nodes in the cluster. If the cluster is spread across a subnet boundary, include nodes from each subnet to prevent a single point of failure.

12.2 IP Translations

Multiple servers deployed on the same DMZ need to each be addressable by individual public IPs so Teleworker clients can reach them. The IP addresses configured on their interfaces should be DMZ

addresses, most likely from the RFC 1918 range to prevent routing to or from the DMZ without specific rules in the firewall and on the LAN. This presents a problem for MBG servers that need to stream to one another.

Consider an example of two servers, server A and server B, both installed in a DMZ configuration on the same DMZ.

| | Public IP | DMZ IP |
|-------|-------------|-------------|
| MBG A | 66.46.21.11 | 192.168.0.5 |
| MBG B | 66.46.21.12 | 192.168.0.6 |

Set 1 connected to MBG-A calls set 2 connected to MBG-B. MBG-B intercepts the signaling and MBG-A sees a request to stream from set 1 to the public IP of MBG-B. If MBG-A streams to MBG-B via its public IP, there is a very strong possibility that the firewall will not permit the SRTP traffic to route back to the DMZ that it originated from, resulting in audio problems. Furthermore, it is a waste of bandwidth on the public side of the firewall to stream traffic out to it that is destined for a server on the same network once the firewall's NAT rules take effect.

The solution is simple. Both problems are solved by streaming directly from MBG-A's to MBG-B using their DMZ addresses. Unfortunately MBG-A is not aware of the existence of MBG-B. This is the purpose of the IP Translations feature.

In the MBG management GUI, choose Configuration and then IP Translations. In this example, the administrator would enter the following rule on MBG-A: Destination address: 66.46.21.12 Translation address: 192.168.0.6

Now when MBG-A encounters the IP address of 66.46.21.12 in the call setup, it translates it to 192.168.0.6 instead. For this to work in both directions, a reciprocal rule must be entered on MBG-B: Destination address: 66.46.21.11 Translation address: 192.168.0.5

Now a two-way call is properly routable between the two servers.



Note:

This feature is suitable only for small numbers of servers. For N servers, each server requires a list of N-1 translation rules. This becomes difficult to manage for larger values of N. An auto-population feature, leveraging the clustering support, is being investigated for a future release.

12.3 Streaming Addresses

The MBG server will automatically determine the correct IP addresses to which endpoints must send their (S)RTP, if the server has been put into a standard, supported configuration and the correct network profile for that configuration has been chosen. See Services for full details on the supported configurations.

However, sometimes it is necessary to override the default streaming addresses, typically due to a non-standard configuration. When the admin views the Network profiles (under the Configuration tab), the current network profile will be shown with an interface to apply the supported network profiles.

Arbitrary addresses can be entered by selecting the Custom profile, if the “canned” configurations are not suitable. These addresses are used during signaling to inform the endpoints where to send RTP. If they are incorrect, there will be audio problems (typically one-way audio or no audio).

12.3.1 DMZ Deployment Profile

When the MBG server is deployed in a DMZ (see Figure 3 on page 5), all endpoints should send RTP to the IP address seen by the Mitel AMC or SLS during a sync operation. This is the MBG server's publicly-visible address after any NAT by the DMZ firewall. This address is configured automatically when DMZ mode is selected.

If this address is incorrect for some reason (such as multiple layers of NAT), use the Custom profile to enter the correct address.

Setting both the SET-side and ICP-side override addresses using "Custom Profile" is REQUIRED if [S]RTP LOCAL+BYPASS streaming mode is used.

This is because the possibility of LOCAL+BYPASS streaming mode automatically falling back to NORMAL streaming -- even temporarily -- always exists (if ALL necessary requirements happen not to be met for LOCAL+BYPASS streaming mode at a certain point automatic fallback to NORMAL streaming occurs, but LOCAL+BYPASS streaming mode can be automatically reselected later as well).

If this address is incorrect for some reason (such as multiple layers of NAT), use the Custom profile to enter the correct address.

12.3.2 Gateway Deployment Profile

A standard example of the gateway deployment is shown in Figure 2 on page 4. In this configuration, the WAN interface on the server is routable on the “public” network. This is referred to as the “set-side” streaming address, to which teleworker devices and service provider trunk equipment sends RTP. The “public” network is typically the Internet, but may instead be a managed service-provider network, MPLS LAN extension, corporate network, etc.

The LAN interface is attached to the private network. This is referred to as the “ICP-side” streaming address, to which LAN devices (phones), conference bridges, ICPs, voicemails, etc send RTP. The private and public addresses must be on different IP networks.

The defaults are usually acceptable. However, if not, they can be changed by using the Custom profile.

12.4 RTP Frame Size

By default, the RTP frame size is auto-negotiated between the endpoints. A size of 20 ms is common in North America, with 40 ms becoming common in Europe. If needed, the administrator can force use of a particular frame size. For example, some SIP trunk service providers insist on a particular RTP frame size.

The Configuration tab holds the global master setting. This setting is used as the default, and should be left on “Automatic” unless there is a pressing need to change it. Overrides can be placed on specific devices and trunks as required. For example, certain wireless networks handle RTP streams using larger (e.g. 40 ms) packets better than streams using smaller ones.


Note:

The frame size override only affects the streams to and from devices. The ICP-side streaming is always auto-negotiated. On SIP trunks, both WAN and ICP sides can be specified separately.

12.5 TFTP Block Size

MiNet devices use the TFTP protocol to fetch their firmware from the MBG server. The Mitel TFTP server is slightly non-standard – it uses symmetric UDP to traverse NAT devices, and a “sliding window” to improve performance – but is otherwise RFC-compliant.

The default block size in the TFTP protocol is 512 bytes, and with large firmware loads in a lock-step protocol like TFTP⁵ this can take a prohibitively long amount of time to download. MBG employs the TFTP “blksize” option to attempt to transfer 4096 byte blocks, if possible. Depending on one’s network this may or may not be possible: the large packets will require fragmentation on a standard Ethernet network with a 1500 byte MTU, and some ISPs do not permit this.

Set the global TFTP block size to the largest value that works. If your MiNet devices are experiencing issues downloading firmware or HTML applications, change the value to 1024 bytes.

Only the options in the pulldown (512, 1024, 2048 or 4096) are permitted.

12.6 Compression Codecs

12.6.1 MiNet devices

If you are doing secure call recording and the 3rd-party call recording equipment (CRE) only supports G.711 or G.729, you can restrict MBG to using those codecs. If you are not operating under these limitations, you should allow MBG to use an unrestricted range of codecs.

In addition, to reduce the amount of bandwidth consumed on the Internet side of the connection, you can force remote MiNet sets to use a specific codec. If bandwidth is not an issue, you can allow the sets to select a codec independently. Note that if this option is enabled, compression licenses are required to support transcoding from the Internet side to the ICP side of MBG.

⁵ Receipt of each block must be acknowledged before the next block is sent

12.6.2 SIP devices

If you are doing secure call recording and the 3rd-party call recording equipment (CRE) only supports G.711 or G.729, you can restrict MBG to using those codecs. If you are not operating under these limitations, you should allow MBG to use an unrestricted range of codecs.

12.7 SRTP Port Range

Each active call on the MBG requires four UDP ports: two for RTP and two for RTCP streams. Some SIP calls (video, T.38) might require eight or more ports. (Two ports for RTP plus two ports for RTCP per SDP media line are required). Ports are only used while calls are actually active, and are released upon the end of the call, or, for MiNet, end of the stream (which may be a hold or transfer, not actually the end of the “call”).

The default voice port range of 20002-29999 provides enough ports for 2499 simultaneous voice calls, while the default video port range of 30000-30999 provides enough ports for 249 simultaneous video calls. These ranges can be reduced for smaller sites, if needed. The resulting ranges must be large enough to support all concurrent and transient calls. These ranges can also be moved for specific network requirements.

The MiCollab Client SIP softphone requires video ports to be reserved, even in cases where video may not be used during the call. Therefore to support MiCollab Client SIP softphones, an equal count of audio and video ports should be configured (for example 20002-30999 for Audio **and** 20002-30999 for Video).

Ensure that all third-party firewalls have the matching range programmed. Mismatches between a DMZ firewall and the MBG will result in some calls having no audio (or only one-way audio).

12.8 DSCP

MiVoice Border Gateway allows configuration of a Differentiated Services Code Point (DSCP) to be inserted into the header of ip packets. A separate value can be configured for signaling and media packets. This is one of the tools available to help improve voice quality in some congested managed network environments.

As an example, consider a deployment with a managed WAN on the ICP side of MiVoice Border Gateway and the Internet on the sets side of MBG. Now consider a situation where a managed WAN Service Level Agreement (SLA) is purchased that divides traffic into classes, including an Expedited Forwarding (EF) queue with priority over other traffic classes. In this situation, MiVoice Border Gateway can be configured to insert an EF value (46 decimal) for voice packets as they pass from the Internet to the ICP side so that they can be protected on the managed WAN during periods of congestion.

If the remote VoIP devices are only using voice then the bandwidth purchased for the EF queue must be large enough to accommodate the total number of concurrent voice streams passing through the MBG from Internet to managed WAN. However, if the remote VoIP devices will also be using video in this example, then the bandwidth purchased for the EF queue must account for both voice and video, keeping in mind that a video call requires 10 to 20 times more bandwidth than a compressed audio call even when devices are configured with the lowest bandwidth settings. Refer to section [Determine Bandwidth Requirements](#) for guidance on calculating required bandwidth.

Alternatively, if the cost is prohibitive for provisioning enough EF queue bandwidth to support both voice and video needed for the deployment, then MiVoice Border Gateway should not be configured to insert an EF value (46 decimal) for voice/video packets. The reason for this is to prevent video passing through the MiVoice Border Gateway from impacting voice on a managed WAN where EF bandwidth has only been provisioned for voice. A future release of MiVoice Border Gateway will support configuring different values for voice and video to address this scenario.

Recommended settings when enough EF queue bandwidth has been provisioned to support both voice and video:

- voice/video: 46 decimal (Expedited Forwarding)
- signaling: 24 decimal (Class Selector 3)

Recommended settings when enough EF queue bandwidth has been provisioned to support voice only:

- voice: 46 decimal (Expedited Forwarding)
- video: 34 decimal (Assured Forwarding 41)
- signaling: 24 decimal (Class Selector 3)

This chapter contains the following sections:

- [Determining Line Size for Large Sites](#)
- [Determine Call Equivalents](#)
- [Determine Bandwidth Requirements](#)
- [Hardware Selection](#)
- [Web Proxy and Remote Management Service Requirements](#)
- [MiCollab Client and MiCollab AWW Conferencing Requirements](#)
- [MiContact Center Softphone Requirements](#)

MBG installations come in many sizes, from a handful of remote workers, to large call centers with recording requirements, to service providers with hundreds of SIP trunks routed to customer Virtual MiVoice Businesses. This section provides guidelines for selecting appropriate hardware and network capacity for any size of installation.

For site with fewer than 500 users and 100 simultaneous streams, skip to section [Determine Call Equivalents](#).



Note:

The calculations in this section assume that no other applications besides MBG will be running on the MSL server.

13.1 Determining Line Size for Large Sites

13.1.1 Step One: Determine Call Rate

The first step is to estimate how busy the site will be. Ideally, this figure will come from observations of actual usage, but it can be estimated. The services provided by the MBG server affect how much load it needs to handle.

Consider a typical teleworker scenario: 20 users working in a remote office. Assume that these users are on the phone about 10 minutes of each hour, or 6 CCS. If the users make two calls per hour, each call is 300s (5 minutes) long.

Multiply the average CPH rate by the total number of users to get the Erlang-B lambda value:

- $\lambda = 2 \text{ CPH} * 20 \text{ users} = 40 \text{ CPH}$

A call center might have usage of 20 CCS per agent. Assume an average call time of 600s (10 minutes). If the agent is busy 2000 call-seconds (20 CCS) and each call is 600s, the agent is handling $3\frac{1}{3}$ calls per hour. For a busy call center with 1000 agents, lambda is:

- $\lambda = 3.3333 \text{ CPH} * 1000 \text{ users} = 3333.3 \text{ CPH}$

13.1.2 Step Two: Determine Service Rate

The service rate, represented by μ , is the mean number of calls the MBG can handle successfully per unit of time, without blocking. If it takes 20 minutes to service one call, then three calls can be serviced per hour, and the service rate is 3 CPH.

In the teleworker example above, the call duration is 300s, so MBG is processing 12 calls per hour:

- $\mu = 12$

In the call center example, the call duration is 600s, so the MBG is processing 6 calls per hour:

- $\mu = 6$

13.1.3 Step Three: Determine Grade of Service

The grade of service, represented by $P(b)$, is the percentage of calls that are turned away (blocked) because of insufficient capacity. The nominal and recommended $P(b)$ is 1%, or 0.01.

13.1.4 Step Four: Erlang-B Calculator

An Erlang-B calculator can now be used with the values above to find the number of lines required to handle the load. (Free Erlang-B calculators are widely available online.) Following the teleworker example above, the Erlang-B calculation is:

- $\lambda = 40, \mu = 12, P(b) = 0.01$
- $c = 9$

The site will need 9 lines to handle the load. In MBG terms, this is 9 simultaneous calls. The number of simultaneous calls is the key value in determining MBG resource requirements.

For the call center example:

- $\lambda = 3333.3, \mu = 6, P(b) = 0.01$
- $c = 583$

The call center would require 583 lines (and agents) to handle the call volume. Again, this is 583 simultaneous calls going through the MBG.

13.2 Determine Call Equivalents

The next step is to determine the impact of transcoding, taps, and codec choices on CPU load and network bandwidth. The baseline is a single non-transcoded call with one RTP stream. The procedure in this step applies a load factor to convert more complex calls into an equivalent number of simple calls.

| Usage | Call Equivalent (CPU) |
|-----------------------------|-----------------------|
| Basic (non-transcoded) call | 1 |
| Transcoded call | 2.5 |
| SIP trunk call | 1 |
| Tapped call | 1.5 |

Example:

4 MiNet sets all in calls with other parties, plus 2 SIP trunk calls, and two of the calls being tapped, all using G.711, would constitute:

CPU use = (4 MiNet calls – 2 tapped) + 2 SIP trunk + 2 tapped

= 2 untapped + 2 trunk + 2 tapped

= 2 + 2 + 2*1.5

= 7 calls

13.3 Determine Bandwidth Requirements

VoIP devices, including phones and SIP trunks, use RTP/SRTP for voice communication. The bandwidth required for the RTP stream depends on the codec selected by the device. MiVoice Border Gateway supports the use of G.711, G.729, and G.722.1. Typically, there will be other requirements for Internet access, and these requirements (such as e-mail, web browsing, e-commerce) must be considered as well.

Failure to provide sufficient bandwidth for all Internet activities may compromise the quality of service of the MiVoice Border Gateway.

The bandwidth figures for a single device are provided in [Bandwidth Requirements for the Remote Site](#). For multiple devices, follow the procedure below.

Assumptions:

- Internet Service Providers specify bandwidth available to the user. i.e. PPPoE overhead does not need to be included in the provisioning of DSL bandwidth, but IP overhead does need to be included.
- RTP Bandwidth Requirements are as follows:
 - G.711 = 80 Kbps
 - G.729 = 24 Kbps
 - G.722.1 = 48 Kbps

- At 6 calls per hour Control stream bandwidth requirement is 20 Kbps peak for each 12 remote devices, and 1 Kbps idle for each remote device.
- The calculation below does not include bandwidth required for features such as paging. If group paging is enabled for teleworkers, an additional RTP stream should be provisioned for each remote member of the paging group.
- Whenever possible, transcoding should be performed by the ICP rather than the MiVoice Border Gateway, as this typically provides improved voice quality.
- If the mix of codecs in use cannot be reliably estimated, it is safest to assume G.711 for all calls.

**Note:**

The actual bandwidth available will likely be less than the amount of bandwidth the ISP advertises. ; Also, the amount of available bandwidth may fluctuate throughout the day based on usage patterns of other subscribers.

The best way to determine the amount of available bandwidth is to use a speed test tool, preferably one provided by a third party rather than the ISP themselves – buyer beware.

13.3.1 G.711 Calculation

Bandwidth = number of users * idle control stream requirement

+ number of calls * RTP requirement

+ number of users / 12 * peak control stream bandwidth

For the teleworker example of 20 remote users:

20 * 1 Kbps + 9 * 80 Kbps + 20/12 * 20 Kbps

= 773 Kbps

For the call center example of 1000 remote agents:

1000 * 1 Kbps + 583 * 80 Kbps + 1000/12 * 20 Kbps

= 49307 Kbps or 48.15 Mbps

13.3.2 G.729a Calculation

Bandwidth = number of users * idle control stream requirement

+ number of calls * RTP requirement

+ number of users / 12 * peak control stream bandwidth

For the teleworker example:

$$20 * 1 \text{ Kbps} + 9 * 24 \text{ Kbps} + 20/12 * 20 \text{ Kbps}$$

$$= 270 \text{ Kbps}$$

For the call center example:

$$1000 * 1 \text{ Kbps} + 583 * 24 \text{ Kbps} + 1000/12 * 20 \text{ Kbps}$$

$$= 16659 \text{ Kbps or } 16.27 \text{ Mbps}$$

13.3.3 Video Calculation

Some VoIP devices support video as well as voice, and extra bandwidth must be provisioned if video calls will be made. Although the exact bandwidth required depends on the content of the image, number of frames per second (fps), the codec and compression selected, and the video resolution, the list below gives approximations for some typical video streams.

| Codec | Resolution | FPS | Bandwidth |
|----------------------------------|--------------------------|------------------------------------|------------|
| H.263 or H.264 ~ 384 kbps | QCIF (176x144) | 15 | ~ 128 kbps |
| | | 30 | ~ 256 kbps |
| | | CIF (352x288) or QVGA (320x240) | 15 |
| 30 | ~ 768 kbps | | |
| MPEG-4 ~ 128 – 360 kbps | CIF (352x288) or 320x240 | | 15 – 30 |

This list shows the bandwidth required for video streams from some Mitel devices contrasted with bandwidth required for other types of media streams.

| | |
|---|---|
| Voice MiCollab Audio, Web and Video Conferencing | If compression (G.729a) enabled: 24 Kbps (bi-directional) |
| | If compression not enabled (G.711): 80 Kbps (bi-directional) |
| | 192 Kbps (bi-directional) |

| | |
|-----------------------|--|
| MiCollab Client Video | 256 Kbps – 1600 Kbps (bi-directional) |
| MiVoice Video Unit | 512 Kbps – 1500 Kbps (bi-directional) |

**Note:**

A video call requires 10 to 20 times more bandwidth than a compressed audio call even when configured with the lowest bandwidth settings.

The Internet bandwidth provisioned at the MBG server must take into account the maximum number of simultaneous video calls from the remote devices and applications.

When a MiVoice Video Unit initiates a video conference it will also serve as the video bridge for the conference. For example, a MiVoice Video Unit that is acting as a video bridge for a 4 party conference will require three times the video bandwidth and three times the audio bandwidth required by a MiVoice Video Unit that is only a participant in the conference.

Video calls between MiCollab Client 6.0 and MiVoice Video Unit 2.0 are supported through MBG but they do not negotiate bandwidth at the time of writing. For example, a MiCollab Client on the Internet will receive video at the rate configured on a MiVoice Video Unit on the LAN even if the MiCollab Client is configured to use low bandwidth. This will be rectified in a future release of MiCollab Client and/or MiVoice Conference/Video Unit.

MiCollab Audio, Web and Video Conferencing between AWW clients via the MiCollab AWW Conferencing server is also supported through MBG. The bandwidth usage per video stream is configurable on the AWW client. An additional consideration is that an AWW client can receive multiple video streams, one for each video participant in the conference. That number can be reduced at the AWW client by minimizing or closing video windows.

For details and current values, see the engineering guidelines for the devices/applications referenced as examples here (available in [Mitel Document Center](#)).

13.3.4 Fax Calculation

A fax call made over a SIP trunk or to a SIP device supporting fax will be either a G.711 voice stream or a T.38 fax session. For the purposes of bandwidth calculations, consider both cases to be an 80 kbps G.711 stream.

13.3.5 Call Recording Calculation

When using MBG's call recording service (Secure Call Recording), a third-party Call Recording Equipment (CRE) device requests "taps" of calls in progress. With Secure Call Recording (SRC), the control connection is an SSL-encrypted TCP stream authenticated by an X.509 client certificate provided by the CRE.

A small amount of bandwidth is used for the CRE control connection. However, it is usually insignificant when compared to the volume of voice traffic, and can be safely ignored. A small amount of CPU load is also incurred for the control connection. Again, it is usually insignificant compared to the load of processing voice signaling and RTP.

MBG makes a copy of the RTP streams for each call that is being recorded, and forwards them to the CRE. Therefore, each tapped call requires 50% more bandwidth than an untapped call. Only audio is recorded; any video or T.38 streams should be ignored when calculating call recording bandwidth requirements. Simply estimate the number of calls that will be recorded simultaneously, and multiply by the codec in use. When in doubt, it is safest to assume G.711 for all calls.

For example, assume that 10 calls will be recorded at a time. All calls are G.711.

Bandwidth = 10 calls * 80 kbps = 800 kbps

The site requires 800 kbps on top of the bandwidth used by the calls themselves.



Note:

When transcoding, the bandwidth requirements are different on the two “sides” of the MBG.

13.3.6 Example Bandwidth Calculation

A site has 48 SIP trunks shared by remote and in-office users. Most users are in the office, but 100 work in various remote branch offices with Teleworker phones hosted on a MiVoice Business at the main office. Remote phones are configured for G.729 to save bandwidth, and all SIP trunk calls are G.711. (MiVoice Business handles any transcoding.) In addition, the site records up to 10 remote office calls at any given time.

At peak, the site uses 40 trunk channels and 75 of the remote users are in a call. Ten percent of the remote users are in MiCollab Client video calls configured to match the lowest bandwidth setting of a MiVoice Conference/Video Unit.

The system is deployed in gateway mode, in parallel with the company firewall.

Step one: G.711 trunk calls WAN BW = 40 channels * 80 kbps = 3200 kbps LAN BW = 40 channels * 80 kbps = 3200 kbps

Step two: Remote office calls; voice WAN BW = 75 * 24 kbps = 1800 kbps LAN BW = 75 * 24 kbps = 1800 kbps

Step three: Remote office calls; video 10% of 75 users = 7.5 WAN BW = 7.5 * 512 kbps = 3840 kbps LAN BW = 7.5 * 512 kbps = 3840 kbps

Step four: Recorded calls LAN BW = 10 tapped calls * 24 kbps = 240 kbps

Step five: Totals

Adding up the results from the four steps, the WAN bandwidth requirement is $3200 + 1800 + 3840$ kbps for a total of 8840 kbps. The site will require at least a 9 megabit connection just for voice and video capacity. The LAN bandwidth, which includes tapped calls, is $3200 + 1800 + 3840 + 240$, or 9080 kbps.

**Note:**

For a server in LAN mode or in a DMZ (with a single NIC), calculate the bandwidth required for the WAN “side” (no tap streams) and LAN “side” (including tap streams) and add them together, since one NIC handles all of the traffic. In the example above, the network would have to handle $8840 + 9080 = 17920$ kbps, or 17.9 Mbps. However, the WAN pipe still only has to handle 9 Mbps.

**Note:**

See also sections [Web Proxy and Remote Management Service Requirements](#), [MiCollab Client and MiCollab AWW Conferencing Requirements](#) and [MiContact Center Softphone Requirements](#).

13.4 Hardware Selection

Installations should use the Call Equivalents obtained in section [Determine Call Equivalents](#) to determine the necessary number of servers.

13.5 Web Proxy and Remote Management Service Requirements

The bandwidth requirements for any and all applications proxied by Web Proxy and Remote Management Service are documented in their respective Engineering Guidelines, and are beyond the scope of this document. See [Web Proxy](#) for relevant firewall rules.

13.5.1 Calculation of the required number of web proxy ports

The following information is a guideline only for typical deployments. If your deployment is atypical, then it is recommended that you contact your Mitel Account Team for further analysis and advice.

Calculate the number of ports required by using the following formulae:

Web Proxy Ports Required = Sum of the following:

- Number of MiCollab users x 1.6
- Number of PC Softphones x 0.26
- Number of remote agents and supervisors on MIR x 1.0

- Number of supervisors on MIR Speech Analysis x 1.0 (Alternatively, add the number of remote agents and supervisors of MIR and multiply by 0.04)
- Number of remote agents and supervisors on MiCC-B x 1.0
- Number of remote agents and supervisors on MiCC-Outbound x 1.0
- Number of OIG connections (typically application/business connections, not users) x 1.0
- Number of Mailboxes on MiCAM x 0.0192 (96 channels with 5000 mailboxes, which is 96/5000)

**Note:**

Although MIR web-proxy connections may not be currently available, this is a planned activity. Therefore, future deployments that include MIR and Speech Analysis should calculate the required number of ports in advance.

If the number of ports required exceeds 5000, then you alternative deployment strategies must be used.

- Increase the number of MBGs and split the load; for example, via DNS
- Assign specific MBGs for specific functions; for example, separate MiCollab MBG from Contact Center MBG
- Deploy MBG specifically for web-proxy capabilities.

13.6 MiCollab Client and MiCollab AWV Conferencing Requirements

MiCollab Client with Softphone module counts as a remote IP set, with additional bandwidth required for its login and presence. The login and presence connections use negligible bandwidth and do not require real-time priority. The MiCollab Client SIP Softphone supports video calls, which requires 10 to 20 times more bandwidth than a compressed audio call even when configured with the lowest bandwidth settings (see section 13.3 for examples).

MiCollab Audio, Web and Video Conferencing between AWV clients via the AWV server is also supported through MBG, which requires significantly more bandwidth than audio calls (see section 13.3 for examples).

A MiCollab AWV Conferencing connection can also require considerable bandwidth, based on the features used, the number of presenters, and the number of participants. The table below provides a typical use-case by number of presenters and participants, with the estimated bandwidth required. For more details, refer to the MiCollab Engineering Guidelines.

**Note:**

The table assumes the following settings:

- **PowerPoint sharing:** enabled
- **Desktop/App Sharing:** disabled
- **Audio Setting:** good
- **Video Setting:** low

The collaboration bandwidth is in addition to that required for voice communications. Refer to [Additional Application Requirements](#) for the relevant firewall rules.

Table 4: Bandwidth Requirements for MiCollab AWW Conferencing Collaboration

| Presenters | Participants | Bandwidth Required |
|------------|--------------|--------------------|
| 1 | 1 | 192 Kbps |
| 1 | 2 | 256 Kbps |
| 1 | 5 | 448 Kbps |
| 2 | 2 | 460 Kbps |
| 2 | 5 | 736 Kbps |
| 1 | 10 | 768 Kbps |
| 2 | 10 | 1.2 Mbps |
| 2 | 50 | 4.9 Mbps |
| 5 | 100 | 18.7 Mbps |

13.7 MiContact Center Softphone Requirements

MBG release 4.5 introduced support for the MiContact Center Softphone version 5.3. The softphone has multiple components. Bandwidth requirements of the voice component are identical to any other Mitel set using G.711 or G.729 (compression). In addition to voice, MiContact Center Softphone supports the following connections through the MBG server:

| MBG Server Port Used | Default Destination Port | Description |
|----------------------|--------------------------|--|
| TCP 36000 | TCP 80 | HTTP authentication and user profile access |
| TCP 36001 | TCP 443 | HTTPS authentication and user profile access |
| TCP 36002 | TCP 5024 | Real-time client |
| TCP 36003 | TCP 5025 | Auditor connection |
| TCP 36004 | TCP 5026 | Telephony proxy |

The “MBG Server Port Used” column indicates the port on which MBG listens, on its Internet-facing side, for the incoming connection. The “Default Destination Port” is the port on the MiContact Center server to which MBG routes the connection. Additional MiContact Center connections were added over multiple releases and as of MBG 8.0 also includes MBG Server TCP ports 35001 to 35008 inclusive. Refer to [MiContact Center](#) for firewall configuration instructions.

Bandwidth requirements will vary depending on the type of activity being performed. During installation of the client, software is downloaded and installed. The client periodically checks for updates and may download and install them. The bandwidth required by these tasks is not included in the tables below; it is assumed to be part of the bandwidth used by the user's PC.

When a user first launches the MiContact Center client and selects devices to view, there is a database transfer. The size of the database depends on the objects selected, as follows:

- 1 Queue (Q) = 65 KB
- 1 Agent (A) = 39 KB
- 1 Employee = 20 KB
- 1 Extension = 17 KB
- 1 Network Monitor (NM) (1 x MiVoice Business) = 56 KB

Refer to the following table to determine the size and download time for the database at various line speeds.

| # of Devices | Config | Data Size | 512 Kbps | 1024 Kbps | 1.54 Mbps | 2.048 Mbps | 10 Mbps |
|--------------|--|-----------|----------|-----------|-----------|------------|----------|
| 5 | 1Q, 1A 1Ex, 1Em, 1NM | 157.6 KB | 00:00:02 | 00:00:01 | 00:00:01 | 00:00:00 | 00:00:00 |
| 50 | 15Q, 11A, 11Ex, 12Em, 2NM | 303.2 KB | 00:00:04 | 00:00:02 | 00:00:01 | 00:00:01 | 00:00:00 |
| 100 | 25Q, 25A, 22Ex, 25Em, 3NM | 348.8 KB | 00:00:06 | 00:00:03 | 00:00:02 | 00:00:01 | 00:00:00 |
| 500 | 200Q, 100A, 92Ex, 100Em, 8NM | 1.304 MB | 00:00:20 | 00:00:10 | 00:00:06 | 00:00:05 | 00:00:01 |
| 1500 | 500Q, 300A, 385Ex 300Em 15NM | 3.528 MB | 00:00:55 | 00:00:27 | 00:00:18 | 00:00:13 | 00:00:02 |
| 5000 | 2086Q, 2379A, 247Ex, 322Em, 16NM | 14.24 MB | 00:03:42 | 00:01:51 | 00:01:13 | 00:00:55 | 00:00:11 |
| 8100 | 3036Q, 4379A, 247Ex, 322Em, 16NM | 22.72 MB | 00:05:55 | 00:02:57 | 00:01:57 | 00:01:28 | 00:00:18 |

**Note:**

The use of traffic shaping (to prioritize RTP ahead of other packets) could be used to prevent data transfers, such as the initial DB transfer above, from affecting calls in progress.

The table below provides bandwidth requirements for a typical MiContact Center configuration at various call rates, in addition to the bandwidth required for voice communications.

| Calls per Hour (CPH) | Bandwidth per ICP | Bandwidth per Real-Time Client |
|----------------------|-------------------|--------------------------------|
| 100 | 0.48 kbps | 0.48 kbps |
| 1000 | 4.88 kbps | 4.72 kbps |
| 2000 | 9.76 kbps | 9.44 kbps |
| 3000 | 14.72 kbps | 14.16 kbps |
| 4000 | 19.6 kbps | 18.88 kbps |
| 5000 | 24.48 kbps | 23.6 kbps |
| 6000 | 29.36 kbps | 28.32 kbps |

**Note:**

This is a guideline only. Actual results may differ depending on the MiContact Center configuration.

This chapter contains the following sections:

- [Licensing](#)
- [Upgrades](#)
- [Host Server Requirements](#)
- [High-Availability](#)

Virtual MiVoice Border Gateway (vMBG) is the MBG software and supported Mitel Standard Linux (MSL) operating system bundled in a VMware Virtual appliance, to run in the VMware vSphere/ESX(i) hypervisor. The software is packaged in Open Virtualization Format (OVF) for deployment into a VMware environment.

MiVoice Border Gateway can also be installed on a Microsoft Hyper-V hypervisor and Nutanix AOS and ESXI hypervisor. This type of virtual deployment is identical to a physical installation. The only limitations are that you can mount the ISO image from a network drive or CD/DVD, but not from a USB device, and that you require a virtual product license applied the ARID.

For detailed information concerning the VMware, Nutanix, and Hyper-V deployments, including hardware and software requirements, refer to the *Virtual Appliance Deployment Guide*.

14.1 Licensing

The standard MBG base kit cannot be used to run an instance of vMBG. The “MiVoice Border Gateway Virtual Appliance” base kit (part number 54005339) must be used instead. An existing base kit can be converted.



Warning:

If the wrong base kit is used, the vMBG will have no licenses.

14.2 Upgrades

A virtual MBG can be upgraded just like a physical MiVoice Border Gateway, by visiting the MSL Blades panel and downloading the update from Mitel Software Download Center. Alternately, a MiVoice Border Gateway CD, available from Mitel MiAccess, can also be used via the VMware console.

MSL can also be upgraded either with the MSL ISO image available from Mitel MiAccess, or by clicking on the ServiceLink blade upgrade in the MSL Blades panel.

From time to time, Mitel releases new OVA files on Mitel MiAccess. The OVA must be used for initial deployment of a vMBG, but can also be used for upgrades by following the procedure below:

1. Back up⁶ the current MiVoice Border Gateway using the application's back-up button.
2. Deploy the new OVA
3. Restore the backup file using the application's restore button

This procedure can also be used to convert a physical to a virtual MBG.

Alternately, a full backup of the MSL server can be performed, followed by deploying a new OVA, and then a restore of the backup using the MSL server console.

14.3 Host Server Requirements

14.3.1 Hardware

For information concerning hardware requirements and server capacities in VMware, Nutanix, and Hyper-V deployments, refer to the *Virtual Appliance Deployment Guide*.

14.3.2 Software

For information concerning software requirements in VMware, Nutanix, and Hyper-V deployments, refer to the *Virtual Appliance Deployment Guide*.

14.4 High-Availability

As with physical MiVoice Border Gateway servers, high-availability is achieved through MBG clustering. However, with virtual hardware, there is an additional consideration. To avoid a single point of failure, Mitel recommends using VMware anti-affinity rules to prevent all cluster nodes from running on the same physical host hardware. See the *Virtual Appliance Deployment Guide* for details.

Running your Mitel solution in a virtual environment allows even more options for high availability and fail-over. VMware availability-related features do not replace the underlying Mitel resiliency architecture (for those Mitel products that offer resiliency; MiVoice Business and MiVoice Border Gateway for example), but can supplement it to provide even higher availability levels, and improved ease of management within the virtualized environment. See the *Virtual Appliance Deployment Guide* for details.

⁶ Mitel recommends making frequent backups of your important data

This chapter contains the following sections:

- [Changing a Cluster Node's IP Address](#)
- [T.38 Faxing Does Not Work With NAT](#)

15.1 Changing a Cluster Node's IP Address

MBG clustering uses IP addresses to identify each node and to initiate cluster communications connections.

To change a node's IP address, Mitel recommends the following procedure:

1. Make sure that the node to be changed is not the master node. Take ownership from another node if required.
2. From the slave node to be changed, go to the clustering tab and click on the “Leave cluster” button.
3. Reconfigure the address via the MSL console, and follow the prompts to reboot.
4. Add the node on the master, and join the server to the cluster.

15.2 T.38 Faxing Does Not Work With NAT

Use of T.38 fax is not compatible with NAT. A fax device behind a NAT firewall/router that does not perform its own NAT traversal may not be able to receive T.38 faxes. It may be able to send them.

During the T.38 setup, the receiving fax listens for incoming tones from the sending fax (no-signal, v21-preamble, etc), then sends tones in response. However, MBG cannot send media to a device behind NAT until that device first sends at least one media packet to the MBG. In a T.38 setup, that will never happen, and the sender's tones are discarded. The call fails (after several retries by the sender).

If the sending fax is behind NAT and the receiving fax is not, the call should work.

It is possible to receive T.38 faxes when behind NAT with certain types of call setup. However, it is not wise to rely on a certain type of negotiation since T.38 calls can be set up in several ways.

Fax devices that support NAT traversal such as STUN should be able to work around this limitation. They appear to MBG as a device with a public address, and MBG can send to them without needing to receive a packet first. Use of G.711 faxing is another option, although it requires a very clean stream. Customers can also use a third-party fax to email or fax to web service.



Note:

This problem does not apply to SIP trunks; there is no NAT on trunks.

Performance Characteristics and Limits

16

This chapter contains the following sections:

- [MBG Capacities – Device \(MiNet & SIP\) and Trunking \(SIP\)](#)
- [MBG Capacities – WebRTC](#)
- [Web Proxy Capacities](#)
- [MBG System Capacities](#)

Mitel continually evaluates hardware and virtual hardware platforms with MBG to determine its maximum capacity. The following are the results of testing with MBG 10.1. These numbers assume a typical office call rate of 6 CCS.

Physical Hardware

CPUs: Dual Hex Core Intel® Xeon® CPU E5-2667 (Sandy Bridge) 2.9 GHz with Hyperthreading

Memory: 32 GB

Network: Gigabit (For details, see the note following the “MBG Capacities” table on the next page)

OS: Mitel Standard Linux

Virtual Hardware

Two deployment configurations are available—Small Business and Enterprise. For information concerning the capacities available with each configuration, refer to the *Virtual Appliance Deployment Guide* in [Mitel Document Center](#).

16.1 MBG Capacities – Device (MiNet & SIP) and Trunking (SIP)

| | System Type | Server Size | Protocol | Registered Devices | Concurrent Calls | Call Rate | Network | Network Card* |
|--------------------|----------------|-------------|----------|--------------------|------------------|-----------|-----------|---|
| MiNet Set Capacity | Physical Limit | Enterprise | MiNet | 5000 | 1600 | 6 ccs | 1 x 10 GB | Broadcom Corporation NetXtreme BCM5719 Gigabit Ethernet PCIe (rev 01) |

| | System Type | Server Size | Protocol | Registered Devices | Concurrent Calls | Call Rate | Network | Network Card* |
|--------------------|----------------|-------------|--------------|--------------------|------------------|-----------|-----------|--|
| | Physical Limit | Enterprise | MiNet | 10,000 | 1600 | 3 ccs | 1 x 10 GB | Broadcom Corporation NetXtreme BCM5719 Gigabit Ethernet PCIe (rev 01) |
| | Physical Limit | Enterprise | MiNet | 5000 | 3000 | 6 ccs | 1 x 10 GB | Intel Corporation 82599ES 10-Gigabit SFI/SFP+ Network Connection (rev 01) |
| SIP Set Capacity | Physical Limit | Enterprise | SIP Sets | 5000 | 800 | 6 ccs | 1 x 10 GB | Broadcom Corporation NetXtreme BCM5719 Gigabit Ethernet PCIe (rev 01) |
| | Physical Limit | Enterprise | SIP Sets | 5000 | 3000 | 6 ccs | 1 x 10 GB | Intel Corporation 82599ES 10-Gigabit SFI/SFP+ Network Connection (rev 01) |
| SIP Trunk Capacity | Physical Limit | Enterprise | SIP Trunking | — | 800 | 6 ccs | 1 x 10 GB | Broadcom Corporation NetXtreme BCM5719 Gigabit Ethernet PCIe (rev 01) |
| | Physical Limit | Enterprise | SIP Trunking | — | 690 | 6 ccs | 1 x 10 GB | Broadcom Corporation BCM57840 NetXtreme II 10/20- Gigabit Ethernet (rev 11) |
| | Physical Limit | Enterprise | SIP Trunking | — | 1100 | 6 ccs | 1 x 10 GB | Intel Corporation 82599ES 10-Gigabit SFI/SFP+ Network Connection (rev 01) |

Note:

- The capacity for concurrent calls is dependent on the network interface controller (NIC) being used. The maximum number of concurrent calls that can be sustained is directly dependent on the performance of the NIC that is installed on the server. In performance testing done by Mitel, bandwidth was typically not an issue (i.e. a 1GB NIC of any type was able to sustain 6 ccs and testing was done successfully with various 1GB and 10GB NICs). NICs with an on-board processor (such as the Intel 82599ES 10GB NIC shown above) can sustain over twice the number of concurrent calls than those without, such as the Broadcom BCM5719 10GB NIC. The Broadcom BCM5719 10GB NIC can Mitel tested could only sustain 1,600 concurrent calls compared to 3325 by the Intel 82599ES NIC. Mitel recommends the NIC selection be done with the expected traffic levels (concurrent calls) in mind.
- SIP Trunk Capacity is tested with zero registered devices. For a mixed-use system (SIP trunks and SIP or MiNet devices), use the MiNet Set Capacity figures.

16.2 MBG Capacities – WebRTC

| | System Type | Server Size | Protocol | Audio | Audio and Video without transcoding | Audio and Video with transcoding | Network | Network Card* |
|-----------------|----------------|-------------|----------|-------|-------------------------------------|----------------------------------|-----------|--|
| WebRTC Capacity | Physical Limit | Enterprise | SIP | 800 | 300 | 36 | 1 x 10 GB | Broadcom Corporation NetXtreme BCM5719 Gigabit Ethernet PCIe (rev 01) |
| | Physical Limit | Enterprise | SIP | 2000 | 600 | 36 | 1 x 10 GB | Intel Corporation 82599ES 10-Gigabit SFI/SFP + Network Connection (rev 01) |

Note:

- The capacities listed above require MBG to be dedicated to WebRTC calls. If the system is being used for other purposes, such as SIP trunking or call recording, the capacities will be reduced.
- Mitel recommends the use of Professional Services for any deployments with an expected number of concurrent WebRTC users greater than 500. This allows the appropriate deployment topology to be recommended.
- Transcoding video can be CPU intensive. To prevent your system from experiencing issues, instruct your users to limit the number of video calls that they place at any one time. Alternatively, enable transcoding only if your implementation includes devices which require it, such as the Mitel MiVoice Video Phone (UC360).

16.3 Web Proxy Capacities

| System Type | Server Size | Protocol | Connections |
|-------------|----------------|-----------|-------------|
| Physical | Enterprise | Web Proxy | 500 |
| Virtual | Enterprise | Web Proxy | 500 |
| Virtual | Small Business | Web Proxy | 500 |

Note:

Maximum number of web-proxy connections:

Non-Resilient: 3000 (500 x 6 nodes)

Resilient: 1500 (500 x 3 nodes + 3 secondary backup)

You can configure advanced settings for the web server on the user interface, under **Security > Web Server > Configure Web Server > Advanced** panel. You can enable up to 5000 web proxy connections with additional RAM in the **Maximum Number of Connections** field for the Large Enterprise deployments. Additional configuration is required to enable this capability. Set the **Keep-alive Timeout (seconds)** field to 15 seconds. Refer to *MSL Online help* for more information on configuring advanced settings for the web server.

Refer to the **VMware required resource reservation and allocation of the [Virtual Application Deployment guide](#)** for resource requirement details.

16.4 MBG System Capacities

| | Limit | Configuration | Comment |
|-------------------------|-------|---------------------|--|
| Max Routing Rules | 50000 | Physical Enterprise | Up to 50,000 routing rules can be configured on a single MBG. |
| Maximum SIP Trunks | 500 | Physical Enterprise | Up to 500 SIP trunks can be configured on a single MBG. |
| Maximum PBX Connections | 500 | Physical Enterprise | Up to 500 PBXs can be connected to a single MBG. |
| Maximum Clustered MBGs | 6 | Any | Up to 6 MBG nodes can be clustered in a single cluster. The cluster must be configured as 5+1, with one MBG reserved for redundancy. |

| | Limit | Configuration | Comment |
|------------------------------|--|---------------------|---|
| Maximum Devices in a Cluster | 25,000 @ 6 ccs per device 50,000 @ 3 ccs per device | Physical Enterprise | An MBG cluster of 6 nodes supports up to 25,000 devices (5 x 5,000 devices, with one node reserved for redundancy) at 6 ccs per device, or up to 50,000 devices (5 x 10,000 devices with one node reserved for redundancy) at 3 ccs per device. |

Appendix A: Firewall Configuration Reference

17

The information in this section is provided to allow configuration of a customer's firewall for the MiVoice Border Gateway in DMZ deployment. This configuration is automatic in the "MiVoice Border Gateway server as the gateway" deployment. In all cases below, "server" refers to the MiVoice Border Gateway server (that is, the MSL server). In the Direction column, the direction of the arrow indicates permission to initiate new connections in that direction. These rules assume a firewall that will permit return traffic on an existing established connection.

Note:

All Mitel internet-facing applications (including MiVoice Border Gateway) must be deployed behind a properly configured corporate firewall. Additionally, Mitel recommends following the best practice of deploying stand-alone gateways specifically designed to be internet-facing, such as the Mitel Border Gateway, as bastion hosts in the corporate DMZ (provided as part of the corporate firewall) to protect LAN-based applications. For Mitel products featuring an embedded gateway (for example, those that have an embedded Mitel Border Gateway), it is still recommended to employ a separate gateway as a bastion host in the DMZ. Because of cost or management complexity constraints, though it is not feasible, the embedded gateway can be deployed to be internet-facing behind the corporate firewall through its WAN interface while connecting to the LAN through a separate network interface. These products have been hardened by running only necessary services to minimize the attack surface from the Internet, isolating LAN and WAN traffic through a separate network interfaces with an internal firewall, and isolating internet-facing gateway services from the UC application services. Lastly, the deployment of any internet-facing product should always be done in conjunction with corporate IT and in accordance to their security policies.

| Port Range | Direction | Purpose and Description |
|---------------------------|--|--|
| AMC Communications | | |
| TCP 22 (SSH) | Server -> Internet | AMC Communications. Allow outbound packets (and replies) on TCP port 22 between the MBG Server and the Internet to enable server registration, software and license key downloads, alerts, and reporting. |
| UDP 53 (DNS) | Server -> Internet or Server -> Corporate DNS server | DNS. The server requires DNS to look up the IP addresses of the Mitel AMC and Software Download Center as well as for correct operation of SIP. Alternatively, the server can be configured to forward all DNS requests to another DNS server. See the <i>MSL Installation and Administration Guide</i> for details. |
| SLS Communications | | |

| | | |
|---------------------------------------|--|--|
| TCP 22 (SSH) | Server -> Internet | SLS Communications. Allow outbound packets (and replies) on TCP port 22 between the MBG Server and the Internet to enable server registration, software and license key downloads, alerts, and reporting. |
| Mitel Software Download Center | | |
| TCP 443 (HTTPS) | Server -> swdlgw.mitel.com 216.191.234.100 | Blades download - access token for content delivery network |
| TCP 443 (HTTPS) | Server -> swdl.mitel.com port 443 (IP address based on location) | Blades download - access to content delivery/blades Akamai |
| Local and Remote Management | | |
| TCP 443 (HTTPS) | LAN -> Server | Local Server Management. Allow inbound and outbound packets on TCP port 443 between the MBG Server and the LAN to allow for management of the server. HTTPS access to the manager on the external interface must also be explicitly enabled from the server-manager interface. The firewall should be configured to limit HTTPS access to desired management hosts. |
| TCP 443 (HTTPS) | Internet -> Server | Remote Server Management (Optional). Allow inbound and outbound packets on TCP port 443 between the MBG server and the Internet to allow remote management of the server, if required. HTTPS access to the manager on the external interface must also be explicitly enabled from the server manager interface. The firewall should be configured to limit HTTPS access to desired management hosts. |
| TCP 22 (SSH) | LAN -> Server | Remote SSH access (Optional). If the admin wishes to administer the MBG server remotely via the command line from the LAN, this rule is required. |
| TCP 22 (SSH) | Internet -> Server | Remote SSH access (Optional). If the admin wishes to administer the MBG server remotely via the command line over the Internet, this rule is required. |
| Clustering | | |

| | | |
|---|-------------------------------------|---|
| TCP 6809 | Between servers in a cluster | Cluster Comms. If making use of clustering in MBG, this port must be open between the servers in the cluster to permit them to communicate with one another. |
| Voice and Video Communications for MiNET Devices, SIP Devices and SIP Trunking | | |
| UDP 20000 | Internet -> Server | Teleworker Analyzer Port. Allow incoming access to UDP port 20000 for the Teleworker Network Analyzer tool to run its diagnostics test. |
| UDP 20002-29999 (Configurable in MBG port range panel) | Internet -> Server LAN -> Server | Voice Communications. Allow incoming traffic on UDP ports 20002 to 29999 from all streaming devices on the LAN and the Internet. Misconfiguration here is a common cause of one-way audio issues. Note that the port boundary values (20002 to 29999) are configurable in the MBG interface. Mitel recommends keeping the default range when possible and avoiding the 50000-50999 range to reduce conflicts with other applications. |
| UDP 30000-30999 (Configurable in MBG port range panel) | Internet -> Server LAN -> Server | Video Communications. Allow incoming traffic on UDP ports 30000 to 30999 from all streaming devices on the LAN and the Internet. Misconfiguration here is a common cause of one-way video issues. Note that the port boundary values (30000 to 30999) are configurable in the MBG interface. Mitel recommends keeping the default range when possible and avoiding the 50000-50999 range to reduce conflicts with other applications. |
| UDP 1024 - 65535 (RTP) | Server -> LAN Server -> Internet | Voice and Video Communications. Allow outgoing SRTP on UDP ports greater than, or equal to 1024 from the server to all streaming devices on the LAN and the Internet. Misconfiguration here is a common cause of one-way audio problems. Note that as of release 7.0, MBG defaults to using even-numbered ports for RTP, leaving the odd-numbered ports for RTCP. The Internet portion of this rule can be safely omitted in the absence of Internet traffic. |
| MiNET 52xx/53xx/69xx Basic | | |
| UDP 20001 | Internet -> Server LAN -> Server | TFTP server. Allow access to UDP port 20001 to allow MiNET devices to download their firmware and applications using TFTP |

| | | |
|--|-------------------------------------|--|
| TCP 6800, 6801 and 6802 | Server -> LAN Server -> ICP(s) | MiNet Call Control. Allow incoming and outgoing packets for TCP ports 6801 (MiNet-SSL) and 6802 (MiNet-Secure V1) between the server and the Internet. Allow incoming and outgoing packets for TCP ports 6800 (unencrypted MiNet), 6801 and 6802 between the server and the LAN and the server and the ICP(s). The LAN rule can be omitted if there are no IP sets on the LAN but ensure that the ICP(s) can communicate with the server's public address. |
| TCP 6801 and 6802 | Internet -> Server | MiNet Call Control. Same as above. Port 6800 should not be used on the Internet as it is unencrypted. Port 6802 is not required with an Enhanced Security deployment. |
| TCP 3998, 6881 | Internet -> Server | SAC Connection Support. Allow incoming TCP from the Internet to the MBG server, on ports 3998 and 6881, to support applications and web browsing, respectively, on the 5235, 5330, 5340 and Navigator sets. There is an additional LAN rule that follows this to complete the support. |
| TCP 3998, 3999 and 6881 | Server -> ICP(s) | SAC Connection Support. Allow bidirectional TCP traffic on port 3999 to/from the ICP(s). This is to support the applications on the 5235, 5330, 5340 and Navigator sets. Note: 3998 and 6881 require an additional, MBG server on the LAN to which the Internet-facing server is daisy-chained. |
| TCP 80 | Server -> LAN Server -> Internet | SAC Connection Support (Optional). Allow TCP port 80 from the server to the Internet, and to the LAN, to support web browsing on the 5235, 5330, 5340 and Navigator sets. Also required to the Internet to allow browsing of the Internet from the set. |
| UDP Port 20001 | Server -> ICPs | HTML application autopopulation support (Optional). To permit MBG to autopopulate HTML applications from the ICPs, bidirectional traffic from a random UDP port on MBG to UDP port 20001 on the ICPs must be permitted. |
| MiNET 69xx Series enhanced feature support – MiNET Generic Plus | | |
| TCP 6881 | Internet -> Server | MiNet 69xx series IP Phones avatar, enhanced application or external LDAP server support (Optional). Allow incoming TCP from the internet to the MBG server on port 6881 to support avatars, enhanced applications or external LDAP server access on 6920, 6930, and 6940. |
| TCP 389 | Server -> LAN | MiNet 69xx Series Phones (Optional). To enable 6920, 6930, 6940 phones to access the company directory, this port must be permitted from the Server to the LDAP database server on the LAN. |

| | | |
|--|---------------------------------|--|
| TCP 80 | Server -> MiCollab Server | MiNet 69xx series IP Phones avatar support. Allow MiVoice Border Gateway to connect to the MiCollab server to retrieve avatars for 6920, 6930, 6940. |
| TCP 80 or TCP 443 | Server -> Application Server | MiNet 69xx series IP Phones enhanced application support (Optional). Allow MiVoice Border Gateway to connect to the application server to provide enhanced features on 6920, 6930, 6940. |
| MINET 5550 IP Console and MiVoice Business Console (pre release 9.0) Support – MiNET Generic Plus | | |
| TCP 6806 | Internet -> Server | IP Console Support and MiVoice Business Console (Optional). |
| TCP 1606 | Server -> LAN | IP Console Support and MiVoice Business Console (Optional). |
| TCP 6807 | Internet -> Server | IP Console and MiVoice Business Console Support for presence (Optional). |
| TCP 18100 | Server -> LAN (MiCollab Server) | IP Console and MiVoice Business Console Support for presence (Optional). |
| TCP 443 | Server -> LAN | IP Console Support and MiVoice Business Console (Optional). |
| MiVoice Business Console Support (release 9.0+) - MiNET Generic Plus | | |
| TCP 36008 | Internet -> Server | MiVoice Business Console support (Optional). Allow the MiVoice Business Console to connect to the MiCollab Client server for presence information |
| TCP 36008 | Server -> LAN | MiVoice Business Console support (Optional). Allow the MiVoice Business Console to connect to the MiCollab Client server for presence information |
| TCP 443 | Server -> LAN | IP Console Support and MiVoice Business Console (Optional). |
| SIP Devices - Generic | | |
| UDP 53 | Server -> DNS server | DNS. The server requires DNS for correct operation of SIP. |

| | | |
|---|--|---|
| UDP 5060 | Server <-> ICPs Server <-> Internet | SIP UDP Support. If the SIP connector is enabled, then this port is required for non-encrypted SIP signaling between MBG and the set, between MBG and the ICP |
| TCP 5060 | Server <-> Internet Server <-> ICPs | SIP TCP Support. Open this port for SIP signaling over TCP between MBG and SIP devices that have been updated to use TCP to port 5060. This port may also be opened between MBG and the ICPs. |
| TCP 5061 | Server <-> Internet Server <-> ICPs | SIP TCP/TLS Support. This port is required for SIP signaling between MBG and SIP devices that have been configured to use TCP/TLS to port 5061 (the default client configuration). This port may also be opened between MBG and the ICPs. |
| SIP Devices - Mitel 68xx phones with MX-ONE (Optional) | | |
| UDP 53 | Server -> DNS server | DNS. The server requires DNS for correct operation of SIP. |
| TCP 5061 | Internet -> Server | Support for Mitel 68xx/69xx SIP phones. This port is required for encrypted SIP signaling between Mitel 68xx phones and MBG |
| TCP 5060 or UDP 5060 | Server -> LAN | Support for Mitel 68xx SIP phones. This port is required for SIP signaling between MBG and MX-ONE |
| TCP 22223 | Internet -> Server | Support for Mitel 68xx phones with MX-ONE (Optional). This port must be permitted to enable encrypted XML connections from Internet-based 68xx phones to the server. |
| TCP 22222 | Server -> LAN | Support for Mitel 68xx phones with MX-ONE (Optional). This port must be permitted to enable unencrypted XML connections from the server to the LAN-based MiVoice MX-ONE ICP. |
| TCP 4431 | Internet -> Server | Support for Mitel 68xx SIP phones with configuration server (Optional). This port must be permitted to enable connections from Internet-based 68xx phones to the server. |

| | | |
|--|----------------------|---|
| TCP 80 or TCP 443 | Server -> LAN | Support for Mitel 68xx SIP phones with configuration server (Optional). This port must be permitted to enable HTTP (TCP 80) or HTTPS (TCP 443) connections from the server to the LAN-based MiVoice MX-ONE configuration server. |
| SIP Device - Mitel 68xx/69xx Phones with MiVoice Office 400 (Optional) | | |
| UDP 53 | Server -> DNS server | DNS. The server requires DNS for correct operation of SIP. |
| UDP 69 | Server -> LAN | Support for Mitel 68xx/69xx phones with MiVoice Office 400 (Optional). This port must be permitted to allow MBG to fetch initial startup.cfg, melody wave files and language files from MiVoice Office 400. |
| TCP 80 | Internet -> Server | Support for Mitel 68xx/69xx phones with MiVoice Office 400 (Optional). This port must be permitted to allow phones to retrieve their initial startup.cfg, root certificates, melody wave files and language files from MBG. |
| TCP 5061 | Internet -> Server | Support for Mitel 68xx/69xx SIP phones with MiVoice Office 400 (Optional). This port is required for encrypted SIP signaling between Mitel 68xx phones and MBG |
| TCP 5061 or TCP 5060 | Server -> LAN | Support for Mitel 68xx/69xx SIP phones with MiVoice Office 400 (Optional). Either TCP 5060 or TCP 5061 (encrypted) is required for SIP signaling between Mitel 68xx/69xx and MiVoice Office 400. |
| TCP 4431 | Internet -> Server | Support for Mitel 68xx/69xx phones with MiVoice Office 400 (Optional). This port must be permitted to enable encrypted XML connections from Internet-based phones to the server. |
| TCP 443 | Server -> LAN | Support for Mitel 68xx/69xx phones with MiVoice Office 400 (Optional). This port must be permitted to enable encrypted XML connections from MBG to MiVoice Office 400. This port is also required for access to Self Service Portal |
| TCP 443 | Internet -> Server | Support for Mitel 68xx/69xx phones with MiVoice Office 400 (Optional). This port must be permitted to allow end users to access the MiVoice Office 400 Self Service Portal via Remote Proxy. |
| SIP Device - MiVoice Conference Phone (Optional) See SIP devices – Generic Plus | | |

| | | |
|----------------------------------|--------------------------------------|---|
| TCP 35010 | Internet -> Server | Mitel MiVoice Conference Phone (Optional). The UC360 connects to the MBG on TCP port number 35010 to securely access an Active Directory server on the Customer's LAN. |
| TCP 389 | Server -> LAN | MiVoice Conference Phone (Optional). To enable Conference Phone users to access the company directory, this port must be permitted from the Server to the LDAP database server on the LAN. |
| SIP Trunking | | |
| UDP 53 | Server -> DNS server | DNS. The server requires DNS for correct operation of SIP. |
| UDP 5060 | Server <-> ICP Server <-> Internet | SIP UDP Support. If your SIP trunking provider supports SIP UDP enable this port for non-encrypted SIP signaling between MBG and the provider and between MBG and the ICP |
| TCP 5060 | Server <-> Internet Server - <-> ICP | SIP TCP Support. If your SIP trunking provider supports SIP TCP, enable this port for non-encrypted SIP signaling between MBG and the provider and between MBG and the ICP |
| TCP 5061 | Server <-> Internet Server - <-> ICP | SIP UDP Support. If your SIP trunking provider supports SIP TLS, enable this port for encrypted SIP signaling between MBG and the provider and between MBG and the ICP |
| Call Recording (Optional) | | |
| TCP 80 | Internet -> Server LAN -> Server | Certificate Management (Optional). On any server hosting clients that make use of MiSSL Tunnel with a client certificate (MiCollab Client, CIS, and so on), this port must be open to the Internet to permit the web service to submit a certificate signing request (CSR), check on the status of that request, and download the certificate. Also needed for CREs to register with SRC control interface. |
| TCP 6810 | LAN -> Server | Call recording support (Optional). To enable a third-party call recording equipment (CRE) server to connect to the SRC control interface on MBG, this port must be enabled. |
| TCP 6815 | Server -> ICPs | Indirect Call Recording support (Optional). To enable MBG to connect to the Indirect Call Recording connector on MiVoice Business systems which support it. |

| | | |
|------------------------------------|-------------------------------------|---|
| UDP 35000 to 35999 | Server -> LAN | Voice Recording. For streaming voice streams from the MBG server to the CRE for recording purposes. |
| Mitel Interaction Recording | | |
| TCP 443 | Internet -> Server Server -> LAN | Mitel Interaction Recording (optional) (MIR). To permit access to the core MIR server webserver for dashboards, recording control and authentication for PowerPlay Web playback. |
| TCP 4040 | Internet -> Server Server -> LAN | Mitel Interaction Recording (optional) (MIR). Web connection for recording playback, authenticated via web-proxy connection (443). |
| WebRTC Support (Optional) | | |
| TCP 5063 | Internet -> Server | WebRTC Support (Optional). To enable use of the WebRTC solution for SIP over TLS, this port must be permitted from the Internet to the server. |
| TCP 389 | Server -> LAN | WebRTC Support (Optional). To enable WebRTC users to access the company directory, this port must be permitted from the Server to the LDAP database server on the LAN. |
| TCP 443 | Server -> LAN | WebRTC Support (Optional). To enable access the user photos, this port must be permitted from the Server to the picture server on the LAN. |
| UDP 5064 | Server <-> LAN | WebRTC Anonymous Mode Support with Security Profile Public (Optional). This port is required for unencrypted SIP signaling for the SIP trunk between MBG and the ICP (MiVoice Business, MiVoice MX-ONE, MiVoice Office 400, or MiVoice 5000). |
| TCP 5065 | Server <-> LAN | WebRTC Anonymous Mode Support with Security Profile Public and Private (Optional and only supported with MiVoice 5000). This port is required for encrypted SIP signaling for the SIP trunk between MBG and the ICP. |
| UDP 5066 | Server <-> LAN | WebRTC Subscriber Support with Security Profile Public (Optional). This port is required for unencrypted SIP signaling between MBG and the ICP for subscriber mode support. |

| | | |
|---|-------------------------------------|--|
| TCP 5066 | Server <-> LAN | WebRTC Subscriber Support with Security Profile Public and Private. This port is required for encrypted SIP signaling between MBG and the ICP for subscriber mode support. |
| UDP 32000 to 32500 (configurable in MBG interface) | Internet -> Server | WebRTC Voice and Video Communications. Allow incoming media on ports 32000 to 32500 from all streaming devices on the Internet to the Server. Note that the port boundary values (32000 to 32500) are configurable in MBG interface. |
| UDP 33000 to 33500 (configurable in MBG interface) | Server -> LAN | WebRTC Voice and Video Communications. Allow incoming media on ports 33000 to 33500 from the Server to the LAN. Note that the port boundary values (33000 to 33500) are configurable in MBG interface. |
| Remote Proxy (Optional) | | |
| UDP 53 (DNS) | Server -> Corporate DNS server | DNS. The server requires DNS to look up the IP address of the internal server to proxy traffic to. See the <i>MBG Installation and Maintenance Guide</i> for details. |
| TCP 443 (HTTPS) | Internet -> Server Server -> LAN | <p>Web Proxy client connections (Optional). If using the Web Proxy application, traffic must be permitted between the Internet and the proxy in the DMZ. The following applications are supported:</p> <p>MiCollab (MiCollab, MiCollab Client, MiCollab Unified Messaging, MiCollab Client Deployment Unit, MiCollab AWW Conferencing, Google Calendar Integration to AWW)</p> <p>MiVoice Business</p> <p>MiCollab Client</p> <p>MiCollab Unified Messaging</p> <p>Open Integration Gateway</p> <p>MiCloud Management Portal</p> |
| TCP 443 (HTTPS) | Server -> LAN | Web Proxy client connections (Optional). If using the Web Proxy application, traffic must be permitted to and from the LAN to the proxy on the DMZ. |

| MiCollab Client (Optional) – See MiNET or SIP Devices for Softphone Plus | | |
|---|-------------------------------------|--|
| TCP 443 | Internet -> Server Server -> LAN | MiCollab Client support (Optional). To permit the MiCollab Client to connect to the MiCollab Client server for credentials, this port must be permitted. |
| TCP 36008 | Internet -> Server Server -> LAN | MiCollab Client support (Optional). To permit the MiCollab Client to connect to the MiCollab Client server for presence information, this port must be permitted. |
| MiCollab AWW Conferencing | | |
| TCP 443 (HTTPS) | Internet -> Firewall | <p>MiCollab AWW Conferencing ConnectionPoint traffic with a dedicated second IP address (Optional).</p> <p>This traffic will arrive on TCP port 443 and be forwarded to the Proxy at the port configured in the Proxy interface to handle it.</p> <p>The Proxy then forwards this traffic to port 4443 on the LAN.</p> |
| TCP <4443> | Firewall -> Server | <p>MiCollab AWW Conferencing ConnectionPoint traffic with a dedicated second IP address (Optional).</p> <p>ConnectionPoint traffic from the Internet to each port configured to receive ConnectionPoint traffic in the Web Proxy must be permitted.</p> <p>The actual port number is defined when the administrator enables the “Listen port for MiCollab AWW (two WAN IPs)” on the Web Proxy. Port 4443 is recommended.</p> |
| TCP 4443 | Internet -> Server | <p>MiCollab AWW Conferencing ConnectionPoint traffic with a dedicated TCP port and one IP address (Optional).</p> <p>The actual port number is defined when the administrator enables the “Listen port for MiCollab AWW (one WAN IP)” on Web Proxy. Port 4443 is recommended.</p> |

| | | |
|---|--------------------|---|
| TCP 4443 | Server -> LAN | <p>MiCollab AWW Conferencing ConnectionPoint traffic (Optional).</p> <p>If using MiCollab AWW Conferencing through the Web Proxy, traffic to this destination port must be permitted between the proxy on the DMZ and the server on the LAN.</p> <p>For deployment using a dedicated TCP port and one IP address, use the port configured under the “Listen port for MiCollab AWW (one WAN IP)” on Web Proxy. Port 4443 is recommended.</p> |
| MiContact Center (Optional) – See MiNET Support for Softphone Plus | | |
| TCP 80 | Internet -> Server | Certificate Management (Optional). On any server hosting clients that make use of MiSSL Tunnel with a client certificate (MiCollab Client, CIS, and so on), this port must be open to the Internet to permit the web service to submit a certificate signing request (CSR), check on the status of that request, and download the certificate. Also needed for CREs to register with SRC control interface. |
| TCP 36000 | Internet -> Server | MiContact Center Support (Optional). To enable use of the MiContact Center solution, this port must be permitted from the Internet to the server. |
| TCP 36003 | Internet -> Server | MiContact Center Support (Optional). To enable use of the MiContact Center solution, this port must be permitted from the Internet to the server. |
| TCP 5025 | Server -> LAN | MiContact Center Support (Optional). To enable use of the MiContact Center solution, this port must be permitted from the server to the Contact Center server on the LAN. |
| TCP 36001 | Internet -> Server | MiContact Center Support (Optional). To enable use of the MiContact Center solution, this port must be permitted from the Internet to the server. |
| TCP 443 | Server -> LAN | MiContact Center Support (Optional). To enable use of the MiContact Center solution, this port must be permitted from the server to the Contact Center server on the LAN. |
| TCP 36002 | Internet -> Server | MiContact Center Support (Optional). To enable use of the MiContact Center solution, this port must be permitted from the Internet to the server. |
| TCP 5024 | Server -> LAN | MiContact Center Support (Optional). To enable use of the MiContact Center solution, this port must be permitted from the server to the Contact Center server on the LAN. |

| | | |
|-----------|--------------------|---|
| TCP 36004 | Internet -> Server | MiContact Center Support (Optional). To enable use of the MiContact Center solution, this port must be permitted from the Internet to the server. |
| TCP 5026 | Server -> LAN | MiContact Center Support (Optional). To enable use of the MiContact Center solution, this port must be permitted from the server to the Contact Center server on the LAN. |
| TCP 35001 | Internet -> Server | MiContact Center Support (Optional). To enable use of the MiContact Center solution, this port must be permitted from the Internet to the server. |
| TCP 5030 | Server -> LAN | MiContact Center Support (Optional). To enable use of the MiContact Center solution, this port must be permitted from the server to the Contact Center server on the LAN. |
| TCP 35002 | Internet -> Server | MiContact Center Support (Optional). To enable use of the MiContact Center solution, this port must be permitted from the Internet to the server. |
| TCP 7001 | Server -> LAN | MiContact Center Support (Optional). To enable use of the MiContact Center solution, this port must be permitted from the server to the Contact Center server on the LAN. |
| TCP 35003 | Internet -> Server | MiContact Center Support (Optional). To enable use of the MiContact Center solution, this port must be permitted from the Internet to the server. |
| TCP 7003 | Server -> LAN | MiContact Center Support (Optional). To enable use of the MiContact Center solution, this port must be permitted from the server to the Contact Center server on the LAN. |
| TCP 35004 | Internet -> Server | MiContact Center Support (Optional). To enable use of the MiContact Center solution, this port must be permitted from the Internet to the server. |
| TCP 8083 | Server -> LAN | MiContact Center Support (Optional). To enable use of the MiContact Center solution, this port must be permitted from the server to the Contact Center server on the LAN. |
| TCP 35005 | Internet -> Server | MiContact Center Support (Optional). To enable use of the MiContact Center solution, this port must be permitted from the Internet to the server. |
| TCP 8084 | Server -> LAN | MiContact Center Support (Optional). To enable use of the MiContact Center solution, this port must be permitted from the server to the Contact Center server on the LAN. |

| | | |
|-----------|--------------------|---|
| TCP 35006 | Internet -> Server | MiContact Center Support (Optional). To enable use of the MiContact Center solution, this port must be permitted from the Internet to the server. |
| TCP 42440 | Server -> LAN | MiContact Center Support (Optional). To enable use of the MiContact Center solution, this port must be permitted from the server to the Contact Center server on the LAN. |
| TCP 35007 | Internet -> Server | MiContact Center Support (Optional). To enable use of the MiContact Center solution, this port must be permitted from the Internet to the server. |
| TCP 1433 | Server -> LAN | MiContact Center Support (Optional). To enable use of the MiContact Center solution, this port must be permitted from the server to the Contact Center server on the LAN. |

Glossary

| | |
|------|---|
| APC | Application Processor Card |
| ATM | Asynchronous Transport Mode. A switching protocol that uses asynchronous time-division multiplexing (TDM) to put data into fixed-size cells. It is suitable for carrying real-time payloads such as voice and video. |
| CCS | Centrum Call Seconds. A unit of measurement used in traffic and queuing theory calculations that is equal to 100 seconds of conversation. One hour of telephone traffic on one line is equal to 36 CCS, which is equal to one erlang (a more common measurement). |
| CPH | Calls Per Hour |
| CRE | Call Recording Equipment |
| CSR | Certificate Signing Request |
| DHCP | Dynamic Host Configuration Protocol (RFC 1541) |
| DMZ | De-Militarized Zone. A portion of a network which is behind a firewall but has elements that are exposed to the Internet. |
| DSL | Digital Subscriber Line |

| | |
|--------|---|
| Erlang | A unit of traffic density in a telecommunications system. One erlang is the equivalent of one call (including call attempts and holding time) in a specific channel for 3600 seconds in an hour. It is equal to one hour of conversation, or 36 CCS. |
| G.711 | ITU-T codec audio standard, specifying an audio signal with a 3.4 KHz bandwidth (ordinary analog voice signal) over an A-law and μ -law digitized, linear PCM at 64Kbps. In G.711, encoded voice is already in the correct format for digital voice delivery in the PSTN or through PBXs. |
| G.729 | This ITU-T standard describes CELP compression where voice is coded into 8-Kbps streams. The two variations of this standard (G.729A and G.729A Annex A) differ mainly in computational complexity; both provide speech quality similar to 32-Kbps ADPCM. |
| ICP | IP Communications Platform |
| IETF | Internet Engineering Task Force. The official specification documents of the Internet Protocol suite are defined by the Internet Engineering Task Force (IETF) and the Internet Engineering Steering Group (IESG). These specifications are recorded and published as standards track RFCs. (See RFC). |
| IP | Internet Protocol (RFC 1122 Section 3.) |
| IPSec | Internet Protocol Security |
| ISP | Internet Service Provider |
| MBG | MiVoice Border Gateway |
| MCA | Mitel Collaboration Advanced; now named MiCollab Audio, Web and Video Conferencing |
| MiNet | Mitel Network Layer Protocol. A signaling protocol used to transport messages between the PBX and all Mitel IP phones. MiNet is encapsulated in TCP. |
| MSL | Mitel Standard Linux. The standard Linux distribution used and maintained by Mitel as a platform for all applications |
| NAT | Network Address Translation. A technique for translating one set of IP addresses, often private, to another set, often public (RFC 1631) |
| PPP | Point-to-Point Protocol |

| | |
|-------|--|
| PPPoA | Point to Point Protocol over ATM |
| PPPoE | PPP over Ethernet |
| PPTP | Point-to-Point Tunneling Protocol |
| QoS | Quality of Service |
| RFC | Request For Comments. A standards document for the public Internet. RFCs are produced by the IETF and its working groups, as well as other bodies, to define and ratify new Internet standards and changes to existing standards. RFCs must first be published as Internet Drafts. |
| RTP | Real-time Protocol (RFC 1889) |
| SIP | Session Initiation Protocol (RFC 3261 et al.) |
| SRC | Secure Recording Connector |
| SRS | SIP Recording Server |
| SRTP | Secure Real Time Protocol (RFC 3711) |
| SSL | Secure Socket Layer |
| TCP | Transmission Control Protocol (RFC 1122) |
| TDM | Time-Division Multiplexing. A system of carrying multiple signals on one carrier by dividing the multiple inputs into fixed-length (time) samples, and placing them one after the other onto the carrier medium. |
| TFTP | Trivial File Transfer Protocol (RFC 783). A simple file transfer protocol (no password protection or user directory services) that uses UDP to transfer files across a network |
| UDP | User Datagram Protocol (RFC 1122) |
| VoIP | Voice over IP |

| | |
|-----|-------------------------|
| VPN | Virtual Private Network |
| WP | Web Proxy |

