



A MITEL
PRODUCT
GUIDE

Unify OpenScape Assistant/ Manager V11 4000

Start Page

Administrator Documentation

07/2024

Notices

The information contained in this document is believed to be accurate in all respects but is not warranted by Mitel Europe Limited. The information is subject to change without notice and should not be construed in any way as a commitment by Mitel or any of its affiliates or subsidiaries. Mitel and its affiliates and subsidiaries assume no responsibility for any errors or omissions in this document. Revisions of this document or new editions of it may be issued to incorporate such changes. No part of this document can be reproduced or transmitted in any form or by any means - electronic or mechanical - for any purpose without written permission from Mitel Networks Corporation.

Trademarks

The trademarks, service marks, logos, and graphics (collectively "Trademarks") appearing on Mitel's Internet sites or in its publications are registered and unregistered trademarks of Mitel Networks Corporation (MNC) or its subsidiaries (collectively "Mitel), Unify Software and Solutions GmbH & Co. KG or its affiliates (collectively "Unify") or others. Use of the Trademarks is prohibited without the express consent from Mitel and/or Unify. Please contact our legal department at iplegal@mitel.com for additional information. For a list of the worldwide Mitel and Unify registered trademarks, please refer to the website: <http://www.mitel.com/trademarks>.

© Copyright 2024, Mitel Networks Corporation

All rights reserved

Contents

1 Start Page - Overview.....	4
1.1 Start Page Main Help Topics.....	4
1.2 Terms Used in the Start Page Online Help.....	5
1.3 User Management.....	6
1.4 Direct Access.....	6
1.5 Multi Language Support.....	9
1.6 Restrictions.....	10
2 Functionality.....	11
2.1 Start Page User Interface.....	11
2.2 Dashboard.....	12
2.3 Application Tree Area.....	14
2.4 Menu Area.....	16
2.4.1 All folders open.....	16
2.4.2 Broadcast.....	18
2.4.3 Custom links.....	19
2.4.3.1 General.....	21
2.4.3.2 Customize.....	23
2.4.3.3 Context Menu: New.....	24
2.4.3.4 Context Menu: Delete.....	26
2.4.3.5 Context Menu: Modify Application.....	27
2.4.3.6 Context Menu: Rename.....	28
2.4.4 Logoff.....	29
2.5 OpenScape 4000 (Manager).....	30
2.5.1 Icon Description.....	30
Index.....	33

1 Start Page - Overview

The **OpenScope 4000 Assistant/Manager Start Page** (referred to as **Start Page** henceforward in this publication) is the central point of access to all applications supported in OpenScope 4000 Assistant/Manager.

The **OpenScope 4000 Assistant/Manager Start Page** allows access to all currently licensed OpenScope 4000 applications which the current user is authorized for. The **Start Page** gives you an overview of all currently licensed applications. No additional login/password entries are necessary to start the licensed applications. Additionally the user can use the Start Page to start the native management applications for managed network objects via Direct Access - see [Direct Access, page 10](#).

Every user can see only those entries in the application tree and in the menus for which he/she is authorized based on access and license information. If certain applications are not displayed in the **Start Page** application tree, there are several possible reasons for this:

- The necessary license for this application has not been acquired, or
- You do not have the necessary access rights for this application, or
- There is no network object of the required network object type in the system. Use System Management to add a proper network object.

Thus, if you do not have the required access rights for System Management, all entries leading to a start of System Management are not visible.

The **OpenScope 4000 Assistant/Manager Start Page** provides multi-language support - see [Multi Language Support, page 14](#).

When launching the **OpenScope 4000 Assistant/Manager Start Page**, Access Management forces you to log in with a valid user name and password. This authentication is not required if the session opened with the start of the first OpenScope 4000 application is still valid.

The size of the application tree can be changed by the user.

The **OpenScope 4000 Assistant/Manager Start Page** is optimised to work with MS Internet Explorer, running on Windows based PCs.

The Start Page user interface consists of the following parts:

- [Menu Area](#)
- [Application Tree Area](#)

Related Topics

[Start Page Main Help Topics](#)

[Terms Used in the Start Page Online Help](#)

[Multi Language Support](#)

1.1 Start Page Main Help Topics

The Start Page Online Help covers the following main topics:

[Start Page User Interface](#)

[Multi Language Support](#)

[Menu Area](#)
[Application Tree Area](#)
[Application Tree Modifications](#)
[Application Tree Customizing](#)
[Object Names in the Application Tree](#)
[Context Menu for the Application Tree](#)
[OpenScape 4000 \(Manager\)](#)
[Broadcast Message](#)
[Security Considerations](#)
[Preferences](#)

Related Topics

[Start Page Field Descriptions](#)
[Functionality](#)

1.2 Terms Used in the Start Page Online Help

In this document the following terms are used:

- Network Object
- A network object is a server managed by System Management.
- Network Object Type
- The type of a network object (e.g. H300, PhoneMail, Network Management Server).
- Application Group
- Application groups are used to organize the complete application tree and collect applications belonging to the same task category.
- Application
- An application is displayed as an entry (link) in the application tree. Each entry represents a program (Windows application or web-based application) that has to be used to perform a special task. In the context of the OpenScape 4000 Assistant/Manager **Start Page**, deleting an application always refers to the entry in the application tree and never to the program to which this entry refers.

Related Topics

[Start Page Main Help Topics](#)
[Multi Language Support](#)
[Start Page User Interface](#)
[Menu Area](#)
[Application Tree Area](#)
[Application Tree Modifications](#)
[Application Tree Customizing](#)
[Object Names in the Application Tree](#)

[Context Menu for the Application Tree](#)

[OpenScape 4000 \(Manager\)](#)

[Security Considerations](#)

[Start Page Field Descriptions](#)

[Functionality](#)

1.3 User Management

All applications launched via the **Start Page** are maintained by **Access Management** and made available on the **Start Page**. **Access Management** also provides the login name of the logged-on user to the Start Page. The user access rights determine which applications will be visible in the application tree, i.e. only the applications which the current user is authorized to use will be displayed in the application tree.

If the **Start Page** is the first application you are accessing (i.e. no other OpenScape 4000 Assistant/Manager application is running at that time), **Access Management** will prompt you to log in with a valid user name and password. This authentication is not required if a valid OpenScape 4000 session is already running.

Related Topics

[Start Page Main Help Topics](#)

[Multi Language Support](#)

[User Management](#)

[Direct Access](#)

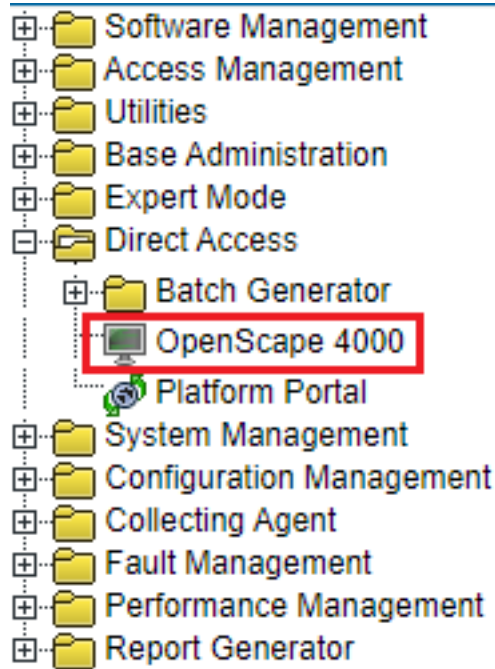
[Security Considerations](#)

1.4 Direct Access

Direct Access is a feature of OpenScape 4000 which enables the user to start the native management application for a network object. Single login means that the user does not have to login to the selected network object. This can only occur if it is possible to pass on the login information to the relevant application.

On Manager:

The Direct Access GUI is accessible via Direct Access --> OpenScape 4000.



For more details, see [Chapter 2.10, "OpenScope 4000 \(Manager\)"](#)

On Assistant:

The feature is a part of the main [Dashboard](#) interface (Component box --> Access column).

The user is able to do following:

1) MML Dialog access via LAP2 dashboard

If you have the access rights, you can open MML Dialog to RMX via the respective link in the Assistant Start Page Dashboard.

NOTICE: If a user does not have the access rights, the link is **NOT** active.

The screenshot shows the LAP2 dashboard interface. On the left is a navigation tree with categories like Software Management, Access Management, Utilities, Base Administration, Expert Mode, Signalling & Payload Encryption, Gateway Manager, Ipttrace Homepage, Platform Portal, SSH connection to Assistant, Permanent Logging, CSTA, System Management, Configuration Management, Collecting Agent, Diagnostics, Performance Management, and Report Generator. The main content area is divided into several panels:

- User Info:** User name: engr (enrg), Client IP: 10.255.100.63, Last successful logon: 2022-03-02 14:18, Last unsuccessful logon: from 10.140.102.120, Number of failed attempts: 0.
- License Management:** System number: L31955Q0510X, Flex and TDM licenses: 58 / 12000, SLES update protection: 7 / 10, Update protection validity: until 2022-12-31, Advanced Locking ID (sys5): +HWNDNLP+PYEDV5HK*RVFNND, License validity: 304 days, Support contract: 304 days.
- Status Board:** System Time: 2022-03-03 12:37 EET, TimeZone and Synchronization Status: OK, Platform Deployment/HW: Simplex / ECOSERVER, Last Data Backup: OK, Last Logical Backup: OK, APE Mode: Not configured in RMX, APE Sync Status: Not configured in RMX.
- Configuration Management:** Upload Status: SYNCHRONOUS, Stations: SYNCHRONOUS, LCR: SYNCHRONOUS, System Data: SYNCHRONOUS, HIM Data: SYNCHRONOUS, HIM SVU: SYNCHRONOUS, HIM ADP: SYNCHRONOUS.
- Component Table:**

Component	System Start date/time	Version	Access
Assistant	2022-02-23 10:57	V10 R1.28.0	[SSH] [SFTP] [File Transfer]
CSTA	2022-02-23 10:57	V10 R1.28.0	[SSH] [SFTP]
Platform	2022-02-23 10:57	V10 R1.28.0	[SSH] [SFTP]
RMX	2022-03-02 13:53	V10 R1.28.0	[ComWin] [File Transfer]
RMX Loadware		V10 R1.28.0*	
OpenScope SBC		0	[SBC]

At the bottom, there are 'Important Hints' and a copyright notice: Copyright (C) 2021 Unify Software and Solutions GmbH & Co. KG 2021. All Rights Reserved. Manufactured by Unify Software and Solutions GmbH & Co. KG.

2) File Transfer to RMX via LAP2 dashboard

If you have the access rights, you can open File Transfer to RMX via the respective link in the Assistant Start Page Dashboard.

NOTICE: If a user does not have the access rights, the link is **NOT** active.

This screenshot is identical to the one above, showing the LAP2 dashboard interface. The key difference is that in the 'Component Table', the 'Access' column for the 'RMX' component has a red box highlighting the '[File Transfer]' link, indicating that this option is available to the user.

3) File Transfer to Assistant via LAP2 dashboard

If you have the access rights, you can open File Transfer to Assistant via the respective link in the Assistant Start Page Dashboard.

NOTICE: If a user does not have the access rights, the link is **NOT** active.

The screenshot displays the Assistant Start Page Dashboard with the following sections:

- User Info:** User name: engr (enrg), Client IP: 10.255.100.63, Last successful logon: 2022-03-02 14:18, Last unsuccessful logon: 10.140.102.120, Number of failed attempts: 0.
- License Management:** System number: L3195500510X, Flex and TDM licenses: 58 / 12000, SLES update protection: 7 / 10, Update protection validity: until 2022-12-31, Advanced Locking ID (sys5): +NWDNLP+PYEDVSHKRVFNID, License validity: 304 days, Support contract: 304 days.
- Status Board:** System Time: 2022-03-03 12:37 EET, TimeZone and Synchronization Status: OK, Platform Deployment/HW: Simplex / ECOSERVER, Last Data Backup: OK, Last Logical Backup: OK, APE Mode: Not configured in RMX, APE Sync Status: Not configured in RMX.
- Configuration Management:** Upload Status: SYNCHRONOUS, Stations: SYNCHRONOUS, LGR: SYNCHRONOUS, System Data: SYNCHRONOUS, HIM Data: SYNCHRONOUS, HIM SWU: SYNCHRONOUS, HIM ADP: SYNCHRONOUS.
- Component Table:**

Component	System Start datetime	Version	Access
Assistant	2022-02-23 10:57	V10 R1.28.0	[SSH] [SFTP] [File Transfer]
CSTA	2022-02-23 10:57	V10 R1.28.0	[SSH] [SFTP]
Platform	2022-02-23 10:57	V10 R1.28.0	[SSH] [SFTP] [File Transfer]
RMX	2022-03-02 13:53	V10 R1.28.0	[ComWin] [File Transfer]
RMX Loadware		V10 R1.28.0*	
OpenScope SBC		0	[SBC]

Notes

- User needs the Expert Access (ComWin) rights, at least System Management read rights and one of AMO access rights from Access Management right group to open correctly the MML Dialog and File Transfer to RMX. This is same as in the previous versions.
- User needs the Expert Access (ComWin) rights and Linux shell access from Access Management right group to open correctly of File Transfer to Assistant. This is same as in the previous versions.
- This feature requires ComWin 5.0.126 or newer

Related Topics

[User Management](#)

[Security Considerations](#)

[Functionality](#)

[Multi Language Support](#)

1.5 Multi Language Support

The **OpenScope 4000 Assistant/Manager Start Page** provides full multi-language support, i.e. the user will be able to choose between available UI languages. All user-added entries in the application tree are not localized.

In this version the user interface is available in **English** and **German**.

The user interface of the **Configuration Management** component will also be available in French, Italian, Dutch, and Spanish.

To set or change the display language of your web browser, select the corresponding settings in your browser - as described below:

- **Internet Explorer** Open the browser settings (**Tools -> Internet Options**). Open the **Language Preferences** window by clicking the **Languages** button on the **General** page. The following languages will be detected when launching the Start Page using Internet Explorer:
 - German (Germany) [de]
 - English [en]
 - French (only **Configuration Management** user interface)
 - Italian (only **Configuration Management** user interface)
 - Dutch (only **Configuration Management** user interface)
 - Spanish (only **Configuration Management** user interface)
 - Chinese (only **Configuration Management** user interface)
 - Russian (only **Configuration Management** user interface)

The language listed at the top position will be the display language of user interface.

Related Topics

[Start Page User Interface](#)

[Start Page Main Help Topics](#)

1.6 Restrictions

User-defined names

All names added by the user via the dialogs described in the sections [Add Application, page 42](#) and [Modify Application, page 44](#) in the application tree are not localized.

The maximum character length for user-defined application group and folder names is 32 characters.

Related Topics

[Application Tree Modifications](#)

[Start Page Main Help Topics](#)

[Application Tree Customizing](#)

[Multi Language Support](#)

2 Functionality

This section describes the **OpenScape 4000 Assistant/Manager Start Page** user interface and its functionality.

If the **Start Page** is the first **OpenScape 4000 Assistant/Manager** application you start, Access Management forces a user authentication (valid login name and password). This authentication is not required if the session opened with the start of the first OpenScape 4000 application is still valid.

As a user you can only see those entries in the application tree and in the menus which you are authorized for based on access and license information. Thus, if you do not have the required access rights for System Management, all entries leading to a start of System Management are not visible.

The size of the application tree can be changed by the user.

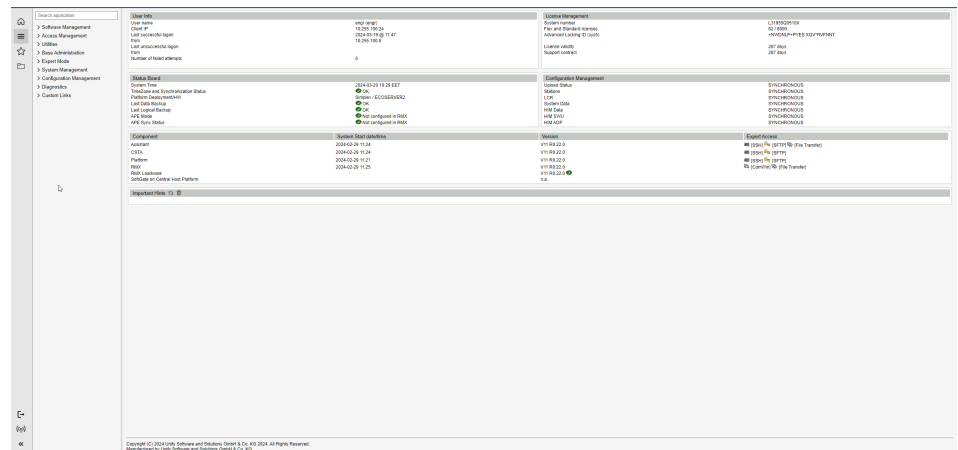
Related Topics

[Start Page - Overview](#)

2.1 Start Page User Interface

The **Start Page** user interface of the Assistant and the Manager respectively consists of the following components:

- [Dashboard](#) (right-hand part)
- [Application Tree Area](#) (left-hand upper part)
- [Menu Area](#) (left-hand lower part)



Related Topics

[Multi Language Support](#)

[Start Page Main Help Topics](#)

[Start Page - Overview](#)

[Start Page Field Descriptions](#)

[Functionality](#)

2.2 Dashboard

The start screens of Assistant and of Manager display useful information about system status in the right-hand pane of the screen. These information are grouped in types within different categories. Some of statuses are specific for Assistant/Manager so only relevant data are displayed for each type of system.

Content of the Dashboard

NOTICE: The given information below differs slightly between Manager and Assistant and may also vary depending on individual system configuration:

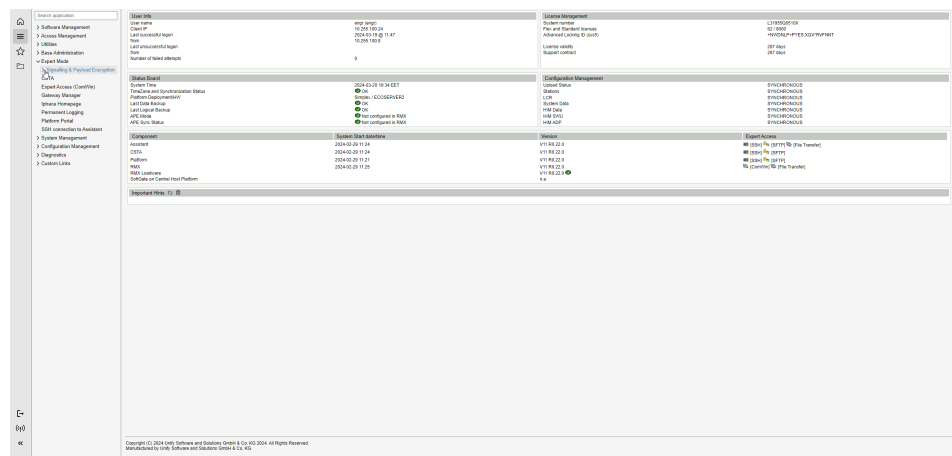


Figure 1: Dashboard: Assistant

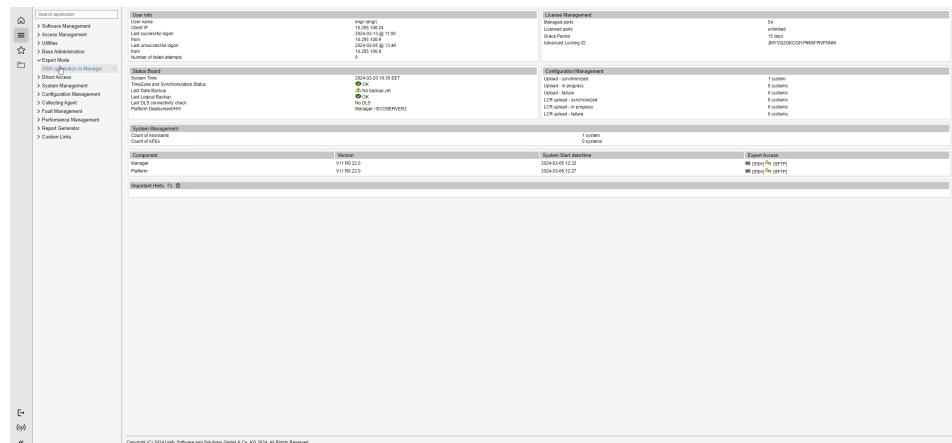


Figure 2: Dashboard: Manager

- **User Info**
 - Logged-in user name (account)
 - Client's IP number
 - Information about last successful and not successful connections
 - Number of failed login attempts

- **License Management**
 - System number (Assistant only)
 - Count of used/available FLEX and TDM licenses (Assistant only)
 - Managed ports (Manager only)
 - Licensed ports (Manager only)
 - SLES upgrade protection (Assistant only)
 - Upgrade protection validity (Assistant only)
 - Advanced Locking ID
 - Status of 'grace period' (if applicable: spare time for license use)
- **Status Board**
 - Server (system) time, time zone and operating system
 - Platform deployment and Hardware
 - Status of last backups
 - Assistant only: Status of last APE (Access Point Emergency) synchronization
 - Manager only: Status of DLS (Deployment Service) connectivity
- **Configuration Management**
 - Status of uploads (Assistant: 6 types of upload, Manager: 2 upload types)
- **Component**
 - Assistant/Manager version, uptime and File Transfer (Assistant only)
 - Assistant only: Platform version and uptime
 - Assistant only: RMX version, uptime, access to ComWin and File Transfer
 - Assistant only: CSTA (Computer Supported Telecommunications Application) version and uptime
 - Assistant only: SG version running on platform
 - OpenScape FM version
 - OpenScape version
- **Important Hints**
 - Displays important messages about system status. Messages are the same as in **Message of the day** dialog displayed during logon to system
- **SSO (Manager only)**
 - Status of last SSO synchronization
 - State of configuration/installation
- **System Management (Manager only)**
 - Count of assigned OpenScape, APEs

Related Topics

[Start Page User Interface](#)

[Multi Language Support](#)

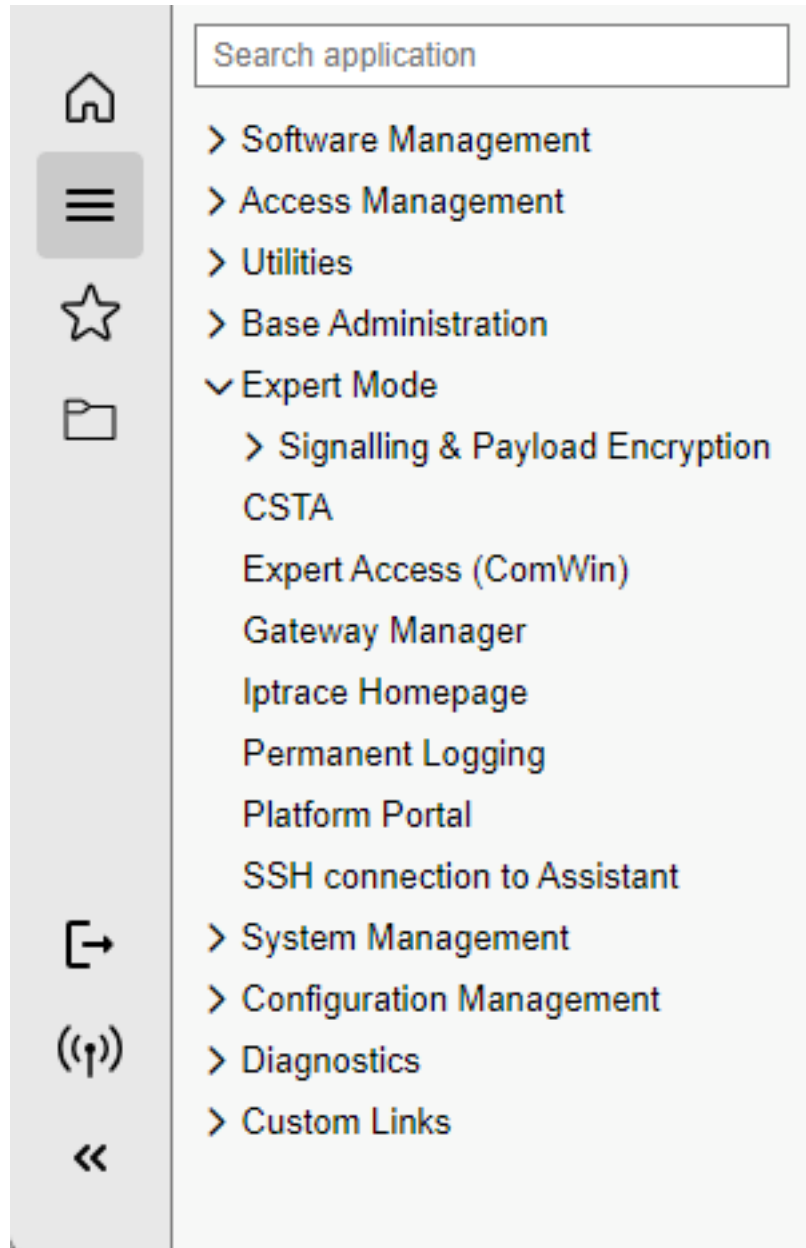
[Dashboard](#)

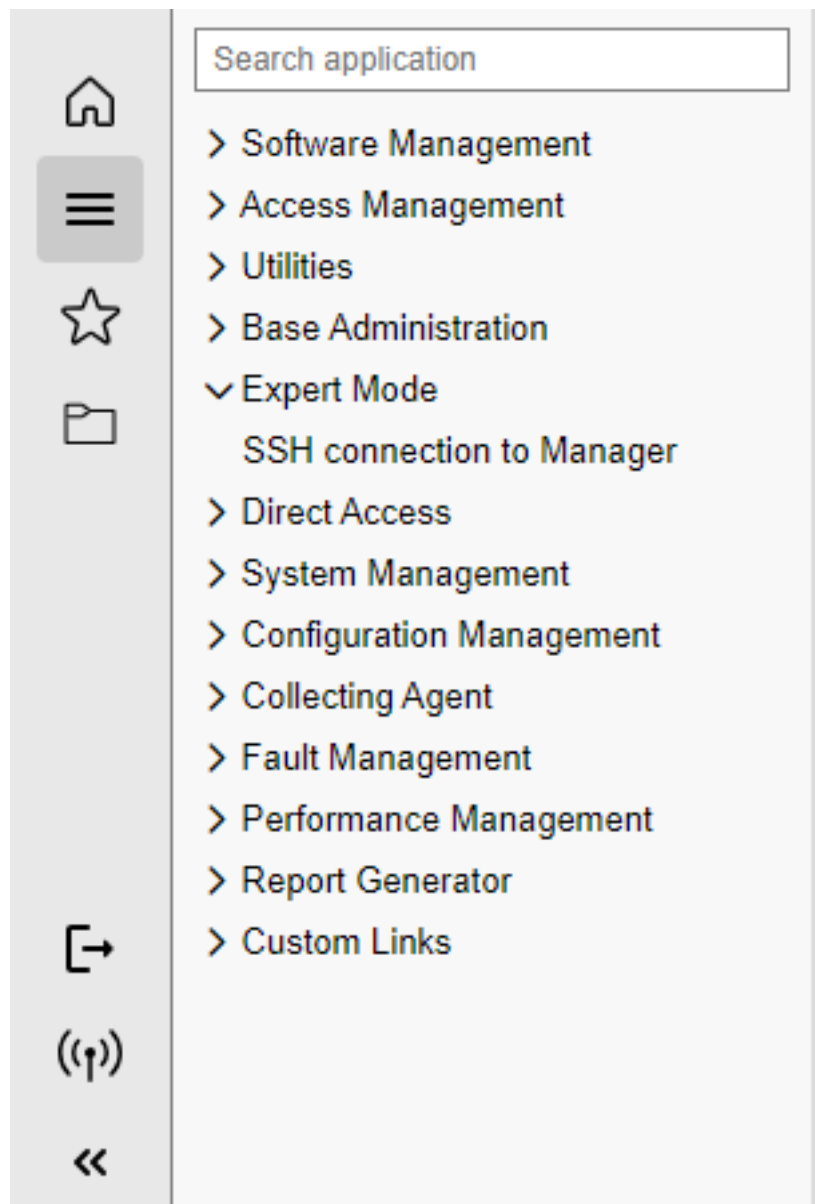
[Application Tree Area](#)

[Menu Area](#)

2.3 Application Tree Area

The **Application Tree** on the **Start Page** is used to start applications. The application tree displays all applications which the customer has bought and the current user has the rights to use.





The application tree consists of the following elements:

- Application Groups
- Folders
- Applications

Application groups are used to organize the complete application tree and collect applications belonging to the same task group.

When you click an application link on the Start Page, the application is launched, and passes on all required parameters. If parameters are needed which belong to a special network object, the Select Network Object dialog opens, and you have to select one. If only one network object belongs to the selected application the dialog for selecting a network object will not be shown and the parameters of this network object will automatically be used.

Parameters can contain several place-holders which are filled in at runtime. Possible place-holders are:

Functionality

Menu Area

- Session token (access key) - %s
- Network object ID (4-digit mnemonic) - %n
- Network object address (IP address of network object) - %i
- Server address (IP address of server) - %a
- URL - %u

The place-holders "Network object ID", "Network object address", "Server address", and "URL", are related to the selected network object. This means that the parameters are used as defined for that network object via System Management. For additional information please refer to the System Management online help.

Related Topics

[Application Tree Modifications](#)

[Object Names in the Application Tree](#)

[Context Menu for the Application Tree](#)

[Multi Language Support](#)

[Start Page User Interface](#)

[OpenScope 4000 \(Manager\)](#)

2.4 Menu Area

The **Start Page** menu area contains the following entries:

[All folders open](#)

[All folders closed](#)

[Broadcast](#)

[Custom links](#)

[Logoff](#)

[Help](#)

The menu icons are described in detail in the corresponding sections.

Related Topics

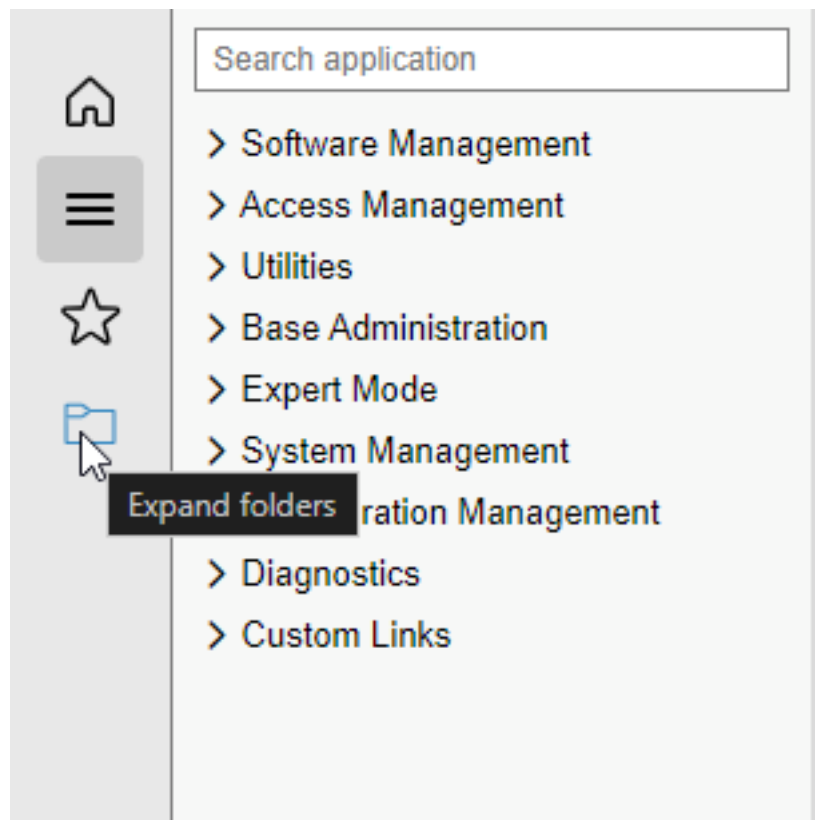
[Start Page User Interface](#)

[Start Page Main Help Topics](#)

[Multi Language Support](#)

2.4.1 All folders open

The **Expand Folders** icon in the menu area is used for making visible all folders and applications in all application groups in the Application Tree.



Related Topics

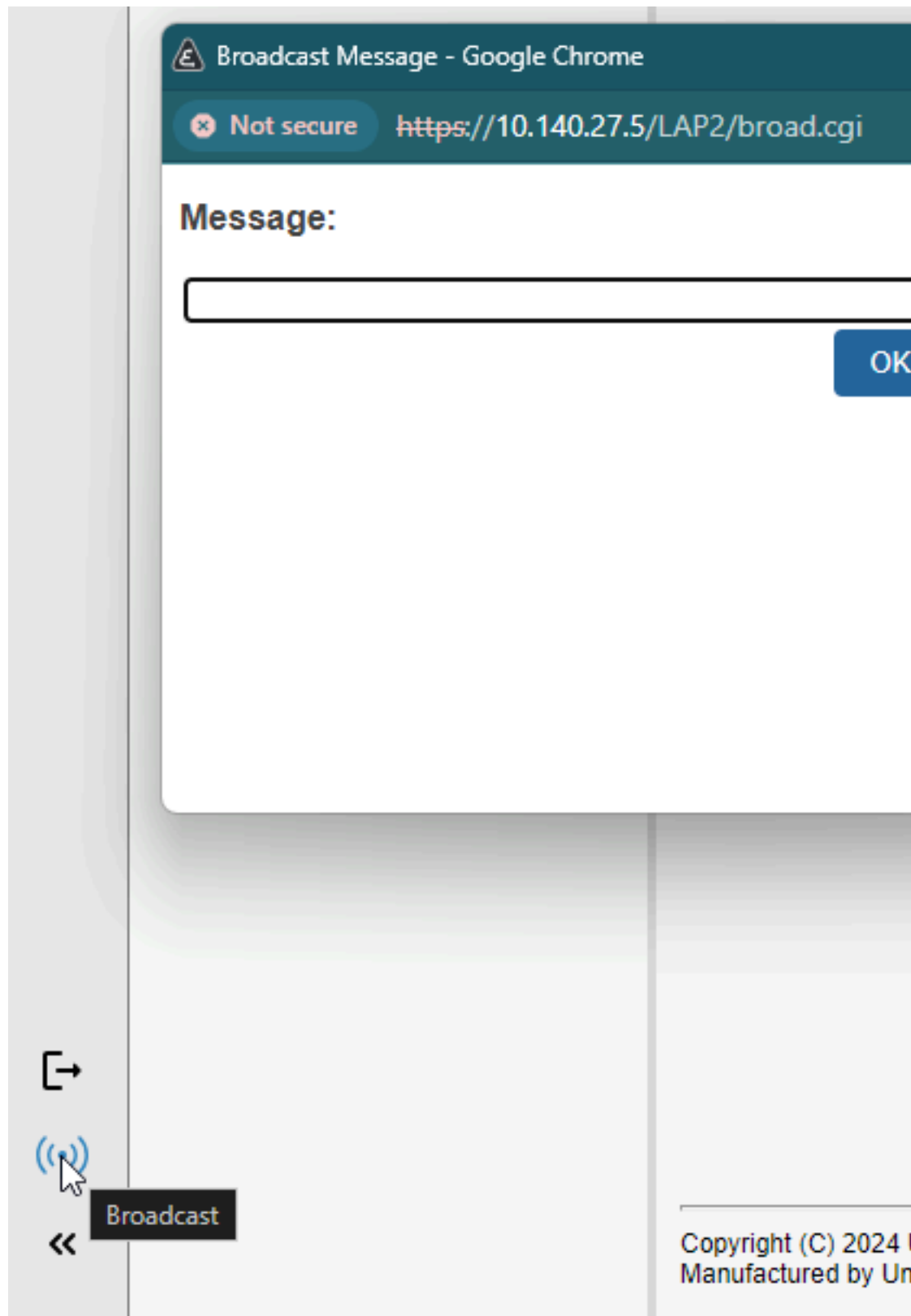
[Start Page User Interface](#)

[Dashboard](#)

[Application Tree Area](#)

[Menu Area](#)

2.4.2 Broadcast



Clicking the **Broadcast icon** opens the **Broadcast Message Window**. The Broadcast Message dialog is described in [Broadcast Message](#). This dialog

can be used for sending broadcast messages to all connected network objects including the sender.

Maximum length of the message is restricted to 60 characters, @ and # are allowed, but not as a string "@#".

Related Topics

[Start Page User Interface](#)

[Dashboard](#)

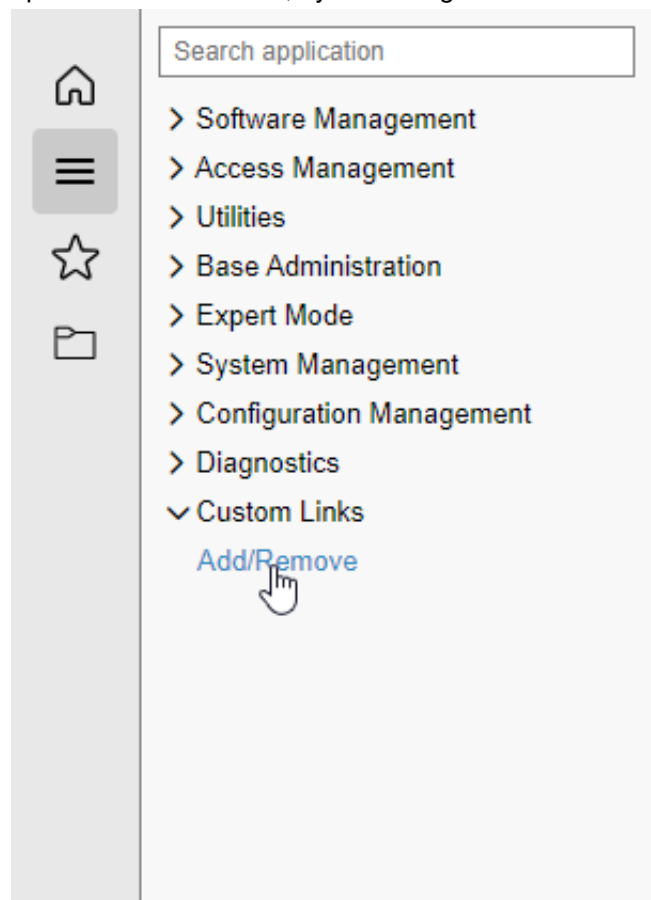
[Menu Area](#)

2.4.3 Custom links

Custom links will allow the user to configure custom shortcuts in Assistant/Manager menu.

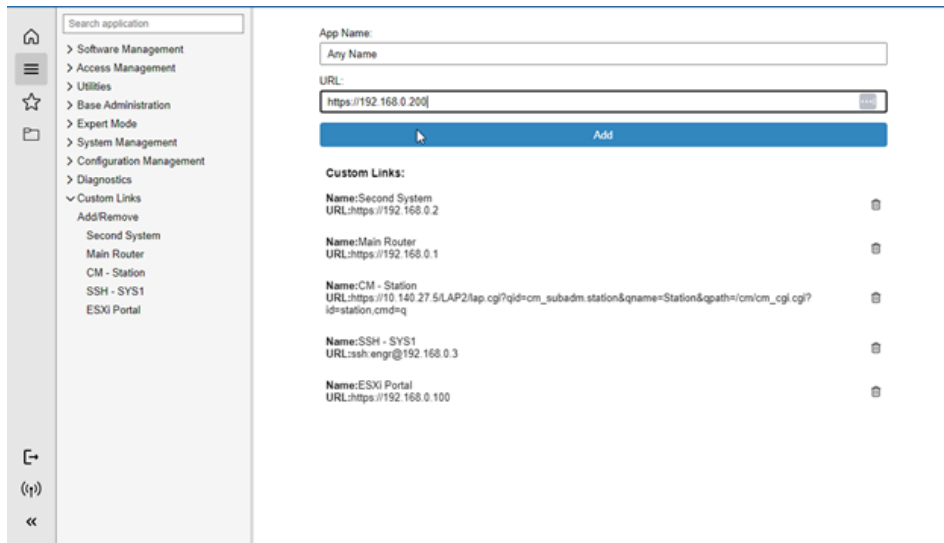
NOTICE: The custom links are user specific, and they are not available from one user to another. This will apply also to RSP connections where different users are configured for remote administration

A custom link can be set in the main start page of Assistant/Manager in the last option of the tree menu, by accessing the **Add/Remove** option.



Functionality

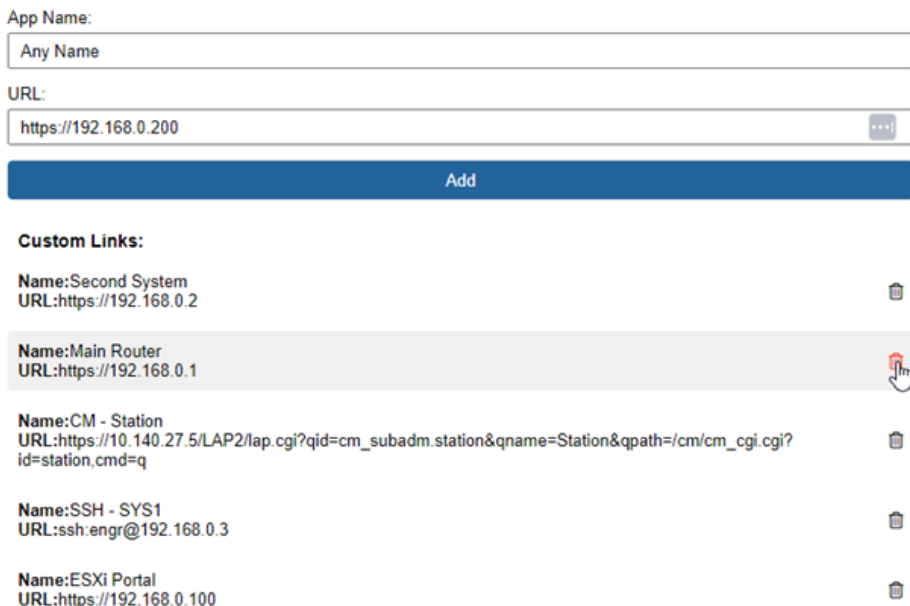
In the new page the user must provide a **Name** for the shortcut that is currently setting and a link that points to the web application desired by the user.



Once the link is configured a new entry will be added in the left tree menu under the Custom Links.

The order of the links is set by the time when the link was configured, and it cannot be edited.

A link can be deleted from that list if that shortcut or link is not valid anymore by accessing again the **Add/Remove** menu and clicking the corresponding bin icon.



Related Topics

[Start Page User Interface](#)

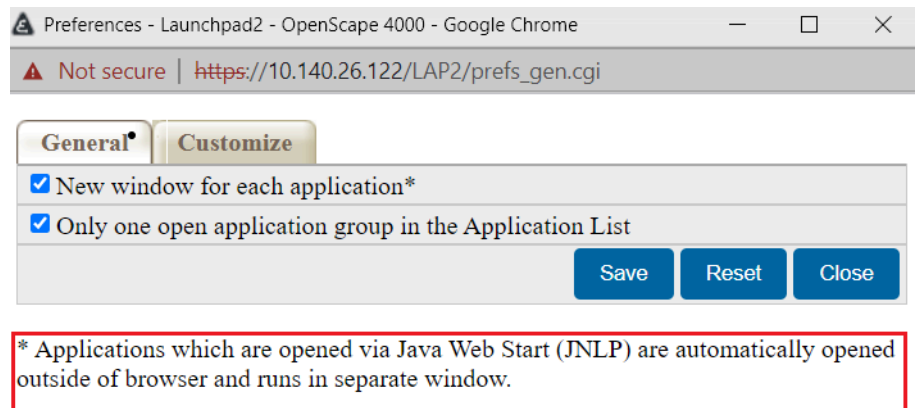
[Dashboard](#)

[Menu Area](#)

[Broadcast](#)

[Logoff](#)

2.4.3.1 General



User preferences can be set in the **General** tab of **Preferences** window.

There are 2 checkbox options to be selected in the **General** tab:

New window for each application

If checked, new window is opened for each application that the user starts. If unchecked, each started application is opened on the Logo Area.

Only one application group in the Application List

If checked, only one application group on the Application Tree is opened at one time and the other previously opened application groups are closed automatically (the application does not close down by itself).

If unchecked, there may be more than one application groups be opened from the Application Tree at the same time.

Buttons

Save	This button is used to save the selected user preferences in the system.
Reset	This button is used to uncheck all the selected preferences.
Close	This button is used to close the Preferences window. At closing the window, only the changed settings are saved only, if the Save button was clicked before.

Note "Applications which are opened via Java Web Start (JNLP) are automatically opened outside of browser and runs in separate window"

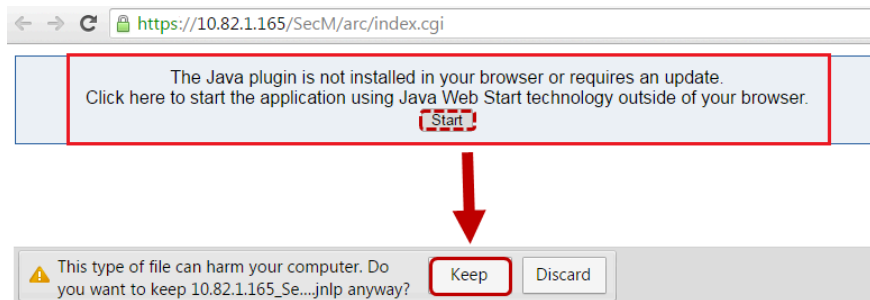
Java applets require a Java plugin to be installed inside of the browser. For the browsers that do not support the Java plugin (for example Google Chrome), **Java Web Start technology** (JNLP file with a definition of a given application) represents an alternative approach that allows user to launch the applets outside of browser.

NOTICE: Java Runtime Environment and Applet Cache Manager are still required to be installed on client PC.

JNLP file is specific for each application and is generated during the startup of the application:

- 1) Select an application from the Application Tree and click to open it.
 - If **Java plugin is installed**, the application is started in a usual way, in a new tab.
 - If **Java plugin is not installed**, you will be notified and a *JNLP file is automatically provided for download and execution.

NOTICE: The behavior may vary based on browser. if the *JNLP file is not provided for download automatically, you can initiate the process via the "**Start**" button.

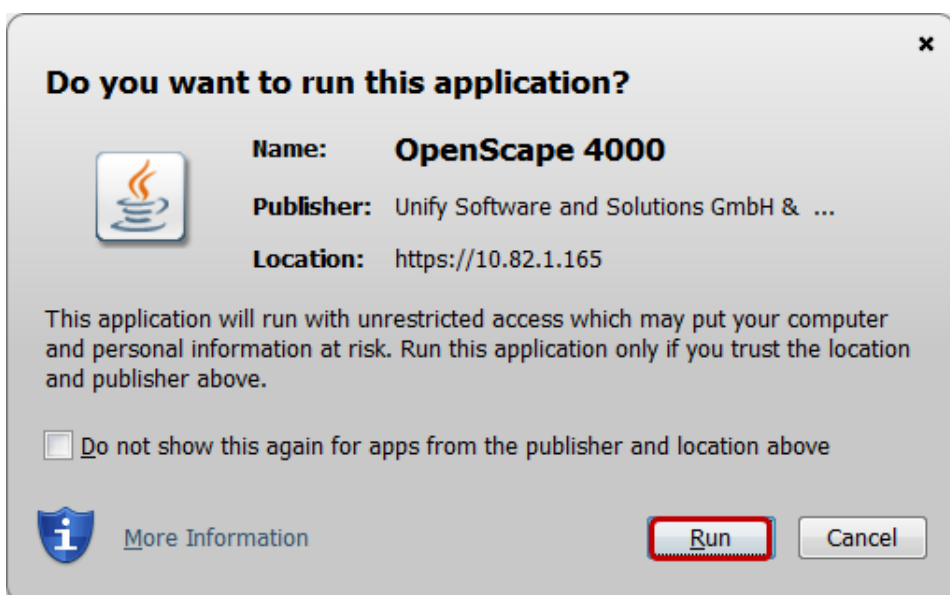
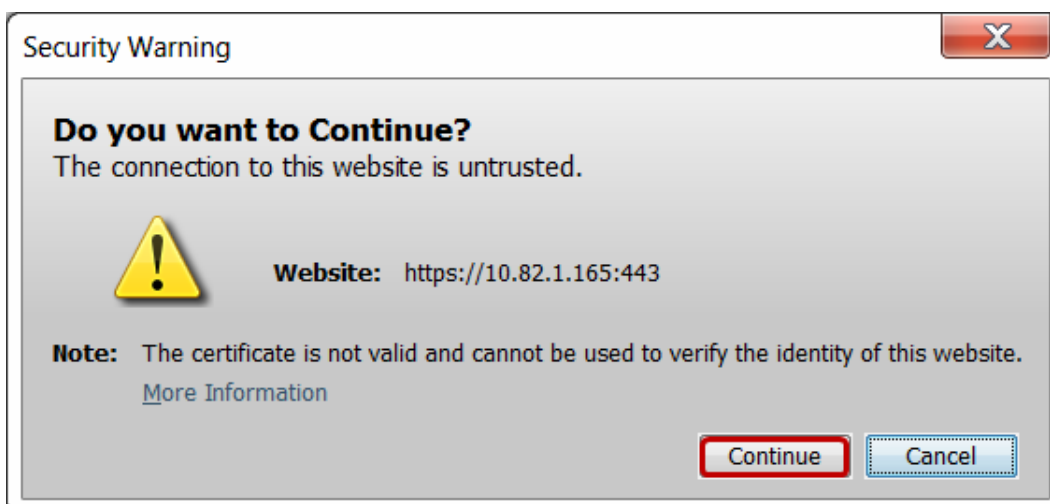


- 2) Double click the downloaded *JNLP file to open it. The application will start in a new window.

NOTICE: The downloaded *JNLP file is valid for two hours only. When expired, it has to be downloaded again.

Troubleshooting note:

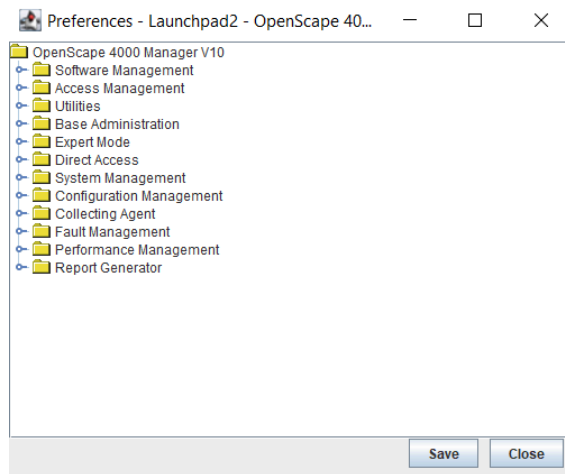
If you see following warnings, your certificate is not valid. For the instructions of how to generate a valid certificate, see the OpenScape 4000 Assistant/Manager, Access Management documentation.



2.4.3.2 Customize

NOTICE: This functionality exists on a OpenScape 4000 Manager only!

Functionality



The modifications which are described in **Application Tree Modifications** are done in the **Customize** tab. Customize operations are described in detail in the corresponding sections.

Buttons

Save	This button is used to save the modifications to the Application Tree.
Close	This button is used to close the Preferences window.

Related Topics

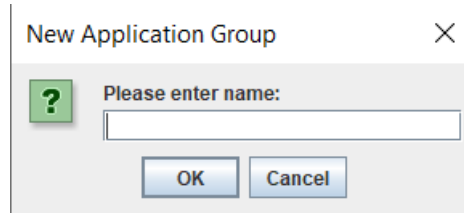
- [Dashboard](#)
- [Application Tree Modifications](#)
- [Application Tree Customizing](#)
- [Menu Area](#)
- [Object Names in the Application Tree](#)
- [Context Menu for the Application Tree](#)
- [Security Considerations](#)
- [Context Menu: New](#)
- [Context Menu: Delete](#)
- [Context Menu: Rename](#)
- [Add Application](#)
- [Modify Application](#)

2.4.3.3 Context Menu: New

Selecting **New** on the context menu of an application group, folder or application opens a dialog box, where the required information is to be entered.

Application Group

This menu entry is used to create a new application group. Clicking on **Application Group** opens the **New Application Group** dialog where the user has to enter the name of the new application group.



New application groups are inserted at the end of the Application Tree. Only user-defined application groups can be edited and deleted by authorized users.

See also [Context Menu for the Application Tree](#)

Application

This menu entry is used to create a new application. Clicking on **Application** opens the **Add Application** dialog described in [Add Application](#), where the user has to enter all parameters for the new application.

New applications are inserted at the end of the currently selected application group and in the currently selected folder. User-defined new applications can be edited and deleted by authorized users.

See also [Context Menu for the Application Tree](#) and [Add Application](#)

Folder

This menu entry is used to create a new folder. Clicking on **Folder** opens the **New Folder** dialog where the user has to enter the name of the new folder.

New folders are inserted at the end of the currently selected application group and in the currently selected folder. User-defined new folders can be edited and deleted by authorized users.

See also [Context Menu for the Application Tree](#)

Related Topics

[Context Menu: Delete](#)

[Context Menu: Modify Application](#)

[Context Menu: Rename](#)

[Note "Applications which are opened via Java Web Start \(JNLP\) are automatically opened outside of browser and runs in separate window"](#)

[Broadcast](#)

[Logoff](#)

[Start Page User Interface](#)

[Dashboard](#)

[Application Tree Modifications](#)

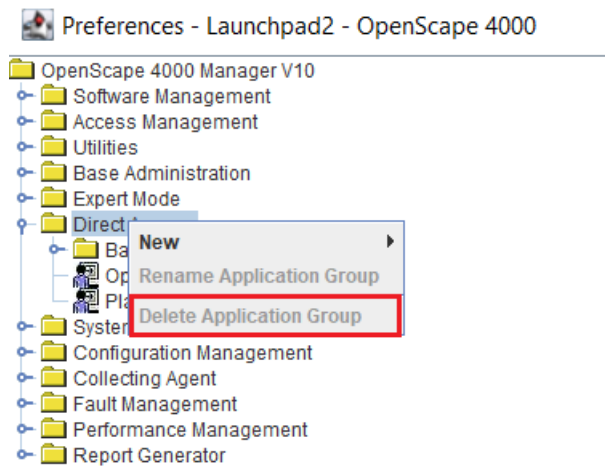
[Application Tree Customizing](#)

[Context Menu for the Application Tree](#)

2.4.3.4 Context Menu: Delete

The **Delete** menu entry in the context menu of an application group, folder or application is used to delete the selected entry.

NOTICE: Delete can only be used with user-defined applications, folders or groups. Predefined default applications, folders and groups can not be deleted. Consequentially, these menu entries are grayed out in the context menu if a predefined default application has been selected.



Application Group

User-defined application groups can only be deleted if they are empty, i. e. if they do not contain any elements. If you try to delete a user-defined application group that contains folders and/or applications, a warning will be displayed alerting you that the selected application group is not empty and may contain applications which are not accessible to the current user.

Predefined default application groups can not be deleted.

Folder

User-defined application folders can only be deleted if they are empty, i. e. if they do not contain any elements. If you try to delete a user-defined application folder that contains subfolders and/or applications, a warning will be displayed alerting you that the selected application folder is not empty and may contain applications which are not accessible to the current user.

Predefined default folders can not be deleted.

Application

Selecting **Application** deletes the currently selected application.

Related Topics

[Context Menu: New](#)

[Context Menu: Modify Application](#)

[Context Menu: Rename](#)

[Broadcast](#)

[Logoff](#)

Note "Applications which are opened via Java Web Start (JNLP) are automatically opened outside of browser and runs in separate window"

[Start Page User Interface](#)

[Dashboard](#)

[Application Tree Modifications](#)

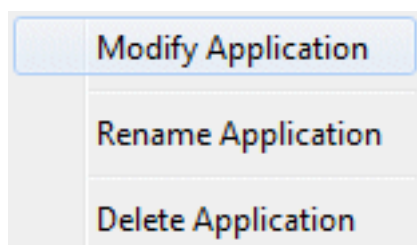
[Application Tree Customizing](#)

[Context Menu for the Application Tree](#)

2.4.3.5 Context Menu: Modify Application

When the user selects the **Modify Application** entry on the context menu of an application, the **Modify Application** window is opened to modify the selected application information.

NOTICE: Modify Application can only be used with user-defined applications. Predefined default applications can not be modified. Consequentially, this menu entry is grayed out in the context menu if a predefined default application has been selected.



The selection of **Application** is only enabled if an application is selected in the application tree, and leads to the dialog described in [Modify Application](#).

Related Topics

[Context Menu: New](#)

[Context Menu: Delete](#)

[Context Menu: Rename](#)

[Broadcast](#)

[Logoff](#)

Note "Applications which are opened via Java Web Start (JNLP) are automatically opened outside of browser and runs in separate window"

[Start Page User Interface](#)

[Dashboard](#)

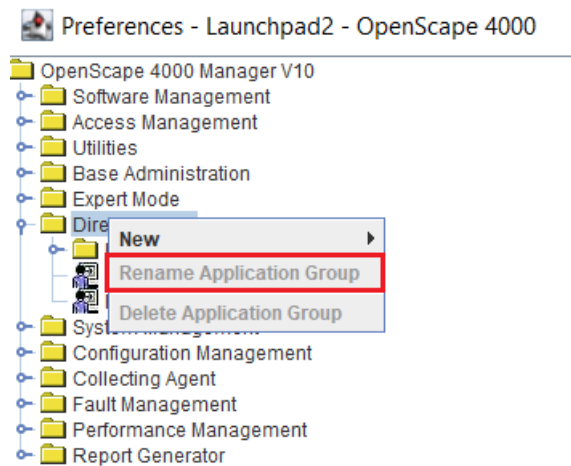
[Application Tree Modifications](#)

[Application Tree Customizing](#)
[Context Menu for the Application Tree](#)

2.4.3.6 Context Menu: Rename

When the user selects **Rename** entry on the context menu of an application group, folder or application, the selected entry becomes editable to enter the new name.

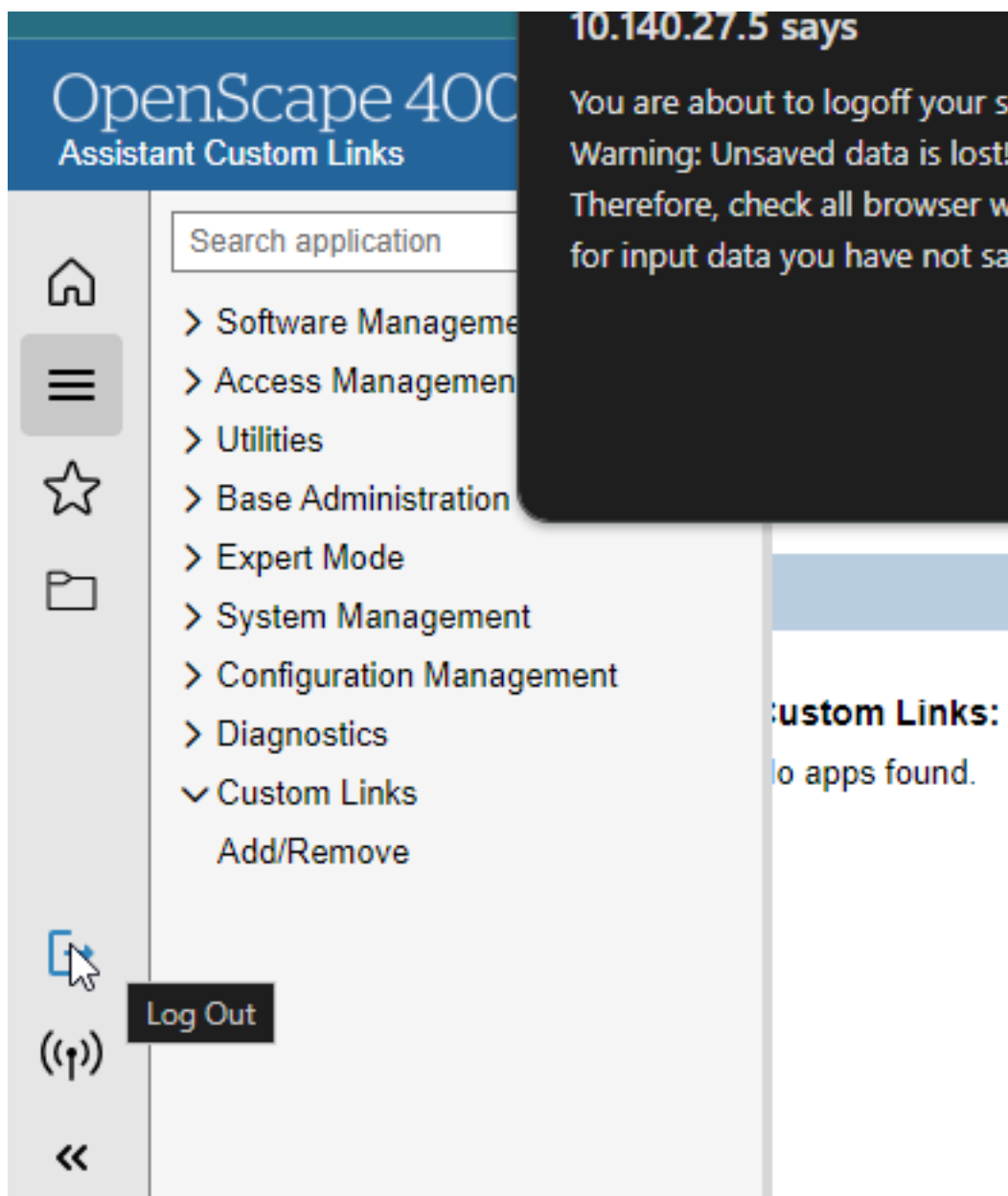
NOTICE: Rename can only be used with user-defined applications, folders or groups. Predefined default applications, folders and groups can not be renamed. Consequentially, this menu entry is grayed out in the context menu if a predefined default application has been selected.



Related Topics

- [Context Menu: New](#)
- [Context Menu: Delete](#)
- [Context Menu: Modify Application](#)
- [Broadcast](#)
- [Logoff](#)
- [Note "Applications which are opened via Java Web Start \(JNLP\) are automatically opened outside of browser and runs in separate window"](#)
- [Start Page User Interface](#)
- [Dashboard](#)
- [Application Tree Modifications](#)
- [Application Tree Customizing](#)
- [Context Menu for the Application Tree](#)

2.4.4 Logoff



When the **Logoff** icon on the **Menu Area** is clicked, a warning message dialog is displayed, warning you that all unsaved data will be lost, and prompting you to save all your data, close all browser windows belonging to the current session, and confirm that you want to log off.

Related Topics

[Start Page Main Help Topics](#)

[Start Page User Interface](#)

[Dashboard](#)

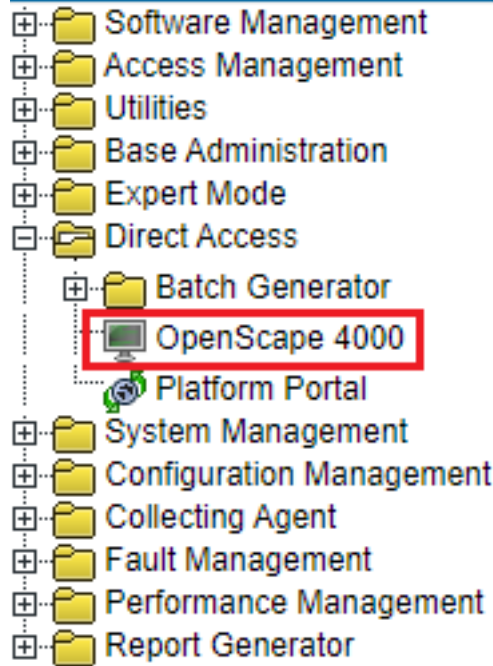
[Application Tree Area](#)

[Menu Area](#)

2.5 OpenScape 4000 (Manager)

This dialog enables user to start the native management application for a network object.

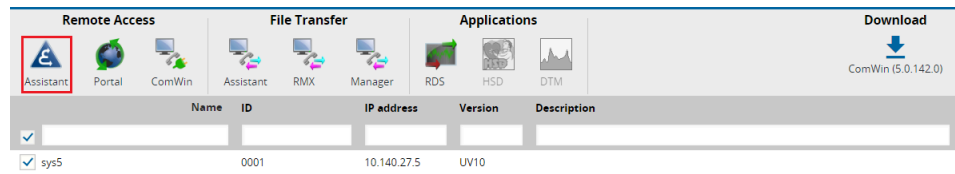
Go to Direct Access --> OpenScape 4000 to open the GUI.



2.5.1 Icon Description

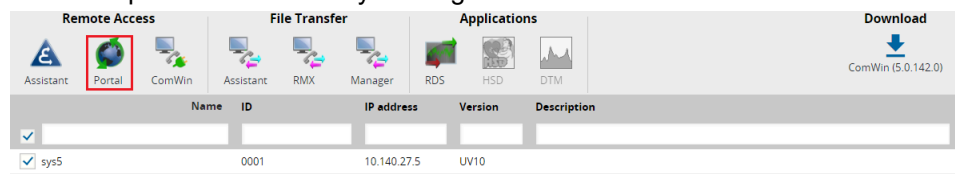
Assistant Remote Access

You can open the Assistant web page from Manager by clicking the Assistant icon.



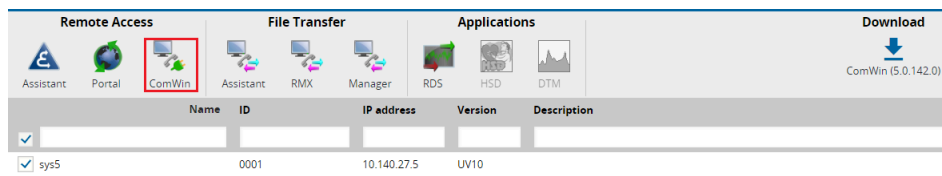
Portal Remote Access

You can open Switch Portal by clicking the Portal icon.



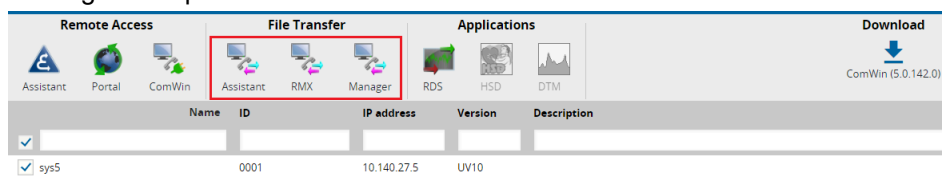
ComWin Remote Access

You can open ComWin with direct access to Switch RMX by clicking the ComWin icon.



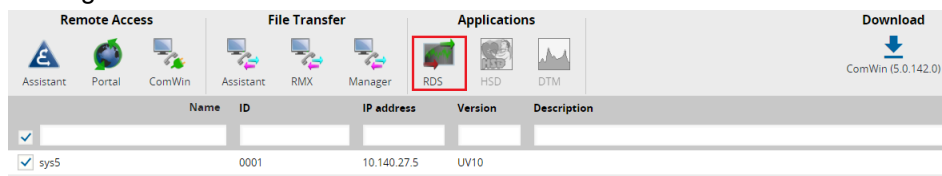
File Transfer to Assistant, Manager and RMX

You can open File Transfer over ComWin to Assistant, RMX, Manager by clicking the respective icon.



Realtime Diagnosis System

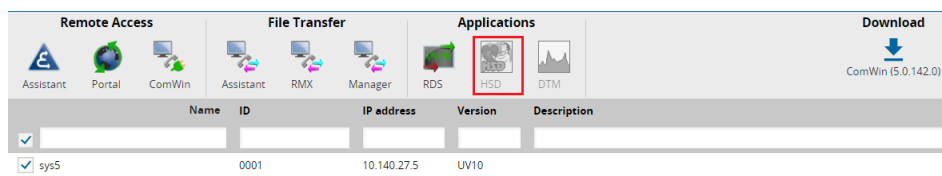
You can open Realtime Diagnosis System (RDS) application on Assistant by clicking the RDS icon.



Hardware and Symptom Diagnosis

You can open Hardware and Symptom Diagnosis (HSD) application on Assistant by clicking the HSD icon.

NOTICE: Only for supported versions.

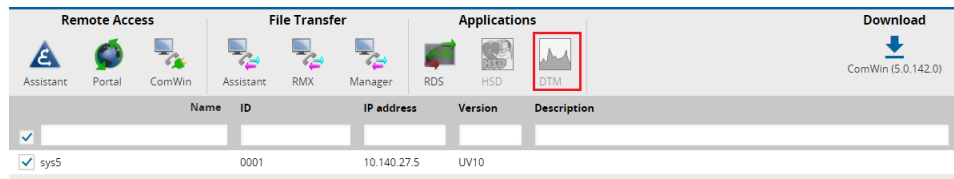


Dynamic Traffic Monitoring

You can open Dynamic Traffic Monitoring (DTM) application on Assistant by clicking the DTM icon.

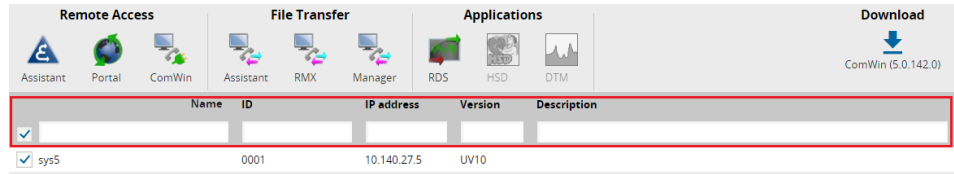
NOTICE: Only for supported versions.

Functionality



Columns filtering and sorting

You can filter and sort switches by each column.



Multi selection of switches

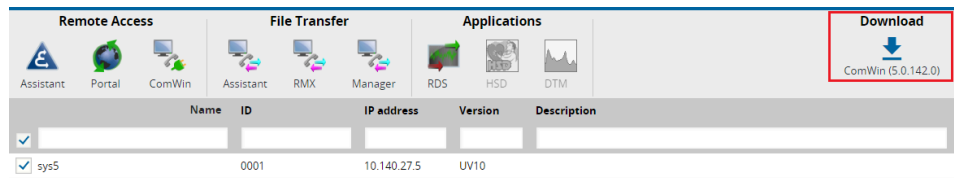
You can select multiple Switches and open connection to more of them just by one click.

NOTICE: For this feature, the user has to enable pop-ups in browser for given site.

<input type="checkbox"/>	Switch V5	0003	10.82.61.5	UV5	Testlab v5
<input checked="" type="checkbox"/>	Switch B	0002	10.82.60.5	UV8	Testlab v8
<input checked="" type="checkbox"/>	Switch A	0001	10.82.48.5	UV8	Testlab v8

ComWin download

You can download ComWin from new DA GUI by clicking the Download ComWin icon..



Notes

- From Manager use unsecure connection to Switch RMX.
- This Feature requires ComWin 5.0.127 or newer.
- ComWin MML and File Transfer do NOT work in multiselection - they are opened only into one of the selected switches.

Related Topics

[Start Page User Interface](#)

[Start Page Main Help Topics](#)

[Direct Access](#)

Index

A

- Access Management [4](#), [6](#), [11](#)
- Access rights [4](#), [6](#)
 - Application tree [11](#)
- Application [5](#)
- Application Group [5](#), [15](#)
- Application Tree
 - Application Groups [15](#)
 - Applications [15](#)
 - Folders [15](#)
 - Visible applications [6](#)
 - Visible entries [11](#)

B

- Broadcast [19](#)
- Broadcast Message [19](#)
- Browser
 - Supported Browsers [4](#)

C

- Component information [13](#)
- Configuration Management information [13](#)
- Context menu
 - Delete [26](#)
 - Rename [28](#)

D

- Delete
 - Application [26](#)
 - Application Group [26](#)
 - context menu [26](#)
 - Folder [26](#)
- Direct Access [4](#), [6](#)
 - Assistant [7](#)
 - Manager [6](#), [30](#)

F

- Folders [15](#)

H

- Help
 - topics [4](#)

I

- Icon
 - Broadcast [19](#)

J

- JNLP [21](#)

L

- License Management information [13](#)
- Licensed applications
 - overview [4](#)

M

- Main Help topics [4](#)
- Menu area
 - Icons [16](#)
- Modify Application [27](#)
 - Context menu [27](#)
- Multi-language support [4](#), [9](#)

N

- Network object [5](#)
- Network Object Type [5](#)
- New
 - Application [25](#)

P

- Parameters for network objects
 - Place-holders [15](#)

R

- Rename
 - Application [28](#)
 - Application Group [28](#)
 - context menu [28](#)
 - Folder [28](#)
- Restrictions [10](#)
 - User-defined names [10](#)

S

- Select Network Object [15](#), [30](#)
- Single login [6](#)
- SSO information (Manager only) [13](#)
- Start Page Help topics [4](#)
- Start Page User Interface
 - Components [11](#)
- Status Board information [13](#)
- System Management [4](#), [11](#)
- System Management information (Manager only) [13](#)

T

Terms used in Start Page Online Help [5](#)

Application [5](#)

Application Group [5](#)

Network object [5](#)

Network object type [5](#)

U

user access rights [6](#)

User Management [6](#)

