



A MITEL
PRODUCT
GUIDE

Unify OpenScape Assistant/ Manager V10 4000

Start Page

Administrator Documentation

08/2024

Notices

The information contained in this document is believed to be accurate in all respects but is not warranted by Mitel Europe Limited. The information is subject to change without notice and should not be construed in any way as a commitment by Mitel or any of its affiliates or subsidiaries. Mitel and its affiliates and subsidiaries assume no responsibility for any errors or omissions in this document. Revisions of this document or new editions of it may be issued to incorporate such changes. No part of this document can be reproduced or transmitted in any form or by any means - electronic or mechanical - for any purpose without written permission from Mitel Networks Corporation.

Trademarks

The trademarks, service marks, logos, and graphics (collectively "Trademarks") appearing on Mitel's Internet sites or in its publications are registered and unregistered trademarks of Mitel Networks Corporation (MNC) or its subsidiaries (collectively "Mitel), Unify Software and Solutions GmbH & Co. KG or its affiliates (collectively "Unify") or others. Use of the Trademarks is prohibited without the express consent from Mitel and/or Unify. Please contact our legal department at iplegal@mitel.com for additional information. For a list of the worldwide Mitel and Unify registered trademarks, please refer to the website: <http://www.mitel.com/trademarks>.

© Copyright 2024, Mitel Networks Corporation

All rights reserved

Contents

1 Start Page - Overview.....	4
1.1 Start Page Main Help Topics.....	4
1.2 Terms Used in the Start Page Online Help.....	5
1.3 User Management.....	6
1.4 Direct Access.....	6
1.5 Multi Language Support.....	9
1.6 Restrictions.....	10
2 Functionality.....	11
2.1 Start Page User Interface.....	11
2.2 Dashboard.....	12
2.3 Application Tree Area.....	14
2.4 Menu Area.....	16
2.4.1 All folders open.....	16
2.4.2 All folders closed.....	17
2.4.3 Broadcast.....	18
2.4.4 Preferences.....	18
2.4.4.1 General.....	19
2.4.4.2 Customize.....	21
2.4.4.3 Context Menu: New.....	22
2.4.4.4 Context Menu: Delete.....	23
2.4.4.5 Context Menu: Modify Application.....	25
2.4.4.6 Context Menu: Rename.....	25
2.4.5 Logoff.....	26
2.4.6 Help.....	27
2.5 Application Tree Modifications.....	27
2.6 Add Application.....	28
2.7 Modify Application.....	30
2.8 Object Names in the Application Tree.....	32
2.9 Context Menu for the Application Tree.....	32
2.9.1 Empty Area Context Menu.....	33
2.9.2 Application Context Menu.....	33
2.9.3 Folder Context Menu.....	34
2.9.4 Application Group Context Menu.....	34
2.10 OpenScape 4000 (Manager).....	35
2.10.1 Icon Description.....	36
2.11 Broadcast Message.....	39
2.12 Security Considerations.....	39
2.13 Application Tree Customizing.....	40
2.14 Error Messages.....	40
3 Step By Step Overview.....	42
4 Start Page Field Descriptions.....	43
4.1 Add Application.....	43
4.2 Modify Application.....	45
4.3 Broadcast Message.....	47
4.4 Select a Network Object.....	47
Index.....	49

1 Start Page - Overview

The **OpenScope 4000 Assistant/Manager Start Page** (referred to as **Start Page** henceforward in this publication) is the central point of access to all applications supported in OpenScope 4000 Assistant/Manager.

The **OpenScope 4000 Assistant/Manager Start Page** allows access to all currently licensed OpenScope 4000 applications which the current user is authorized for. The **Start Page** gives you an overview of all currently licensed applications. No additional login/password entries are necessary to start the licensed applications. Additionally the user can use the Start Page to start the native management applications for managed network objects via Direct Access - see [Direct Access, page 10](#).

Every user can see only those entries in the application tree and in the menus for which he/she is authorized based on access and license information. If certain applications are not displayed in the **Start Page** application tree, there are several possible reasons for this:

- The necessary license for this application has not been acquired, or
- You do not have the necessary access rights for this application, or
- There is no network object of the required network object type in the system. Use System Management to add a proper network object.

Thus, if you do not have the required access rights for System Management, all entries leading to a start of System Management are not visible.

The **OpenScope 4000 Assistant/Manager Start Page** provides multi-language support - see [Multi Language Support, page 14](#).

When launching the **OpenScope 4000 Assistant/Manager Start Page**, Access Management forces you to log in with a valid user name and password. This authentication is not required if the session opened with the start of the first OpenScope 4000 application is still valid.

The size of the application tree can be changed by the user.

The **OpenScope 4000 Assistant/Manager Start Page** is optimised to work with MS Internet Explorer, running on Windows based PCs.

The Start Page user interface consists of the following parts:

- [Menu Area](#)
- [Application Tree Area](#)

Related Topics

[Start Page Main Help Topics](#)

[Terms Used in the Start Page Online Help](#)

[Multi Language Support](#)

1.1 Start Page Main Help Topics

The Start Page Online Help covers the following main topics:

[Start Page User Interface](#)

[Multi Language Support](#)

[Menu Area](#)
[Application Tree Area](#)
[Application Tree Modifications](#)
[Application Tree Customizing](#)
[Object Names in the Application Tree](#)
[Context Menu for the Application Tree](#)
[OpenScape 4000 \(Manager\)](#)
[Broadcast Message](#)
[Security Considerations](#)
[Preferences](#)

Related Topics

[Start Page Field Descriptions](#)
[Functionality](#)

1.2 Terms Used in the Start Page Online Help

In this document the following terms are used:

- Network Object
- A network object is a server managed by System Management.
- Network Object Type
- The type of a network object (e.g. H300, PhoneMail, Network Management Server).
- Application Group
- Application groups are used to organize the complete application tree and collect applications belonging to the same task category.
- Application
- An application is displayed as an entry (link) in the application tree. Each entry represents a program (Windows application or web-based application) that has to be used to perform a special task. In the context of the OpenScape 4000 Assistant/Manager **Start Page**, deleting an application always refers to the entry in the application tree and never to the program to which this entry refers.

Related Topics

[Start Page Main Help Topics](#)
[Multi Language Support](#)
[Start Page User Interface](#)
[Menu Area](#)
[Application Tree Area](#)
[Application Tree Modifications](#)
[Application Tree Customizing](#)
[Object Names in the Application Tree](#)

[Context Menu for the Application Tree](#)

[OpenScape 4000 \(Manager\)](#)

[Security Considerations](#)

[Start Page Field Descriptions](#)

[Functionality](#)

1.3 User Management

All applications launched via the **Start Page** are maintained by **Access Management** and made available on the **Start Page**. **Access Management** also provides the login name of the logged-on user to the Start Page. The user access rights determine which applications will be visible in the application tree, i.e. only the applications which the current user is authorized to use will be displayed in the application tree.

If the **Start Page** is the first application you are accessing (i.e. no other OpenScape 4000 Assistant/Manager application is running at that time), **Access Management** will prompt you to log in with a valid user name and password. This authentication is not required if a valid OpenScape 4000 session is already running.

Related Topics

[Start Page Main Help Topics](#)

[Multi Language Support](#)

[User Management](#)

[Direct Access](#)

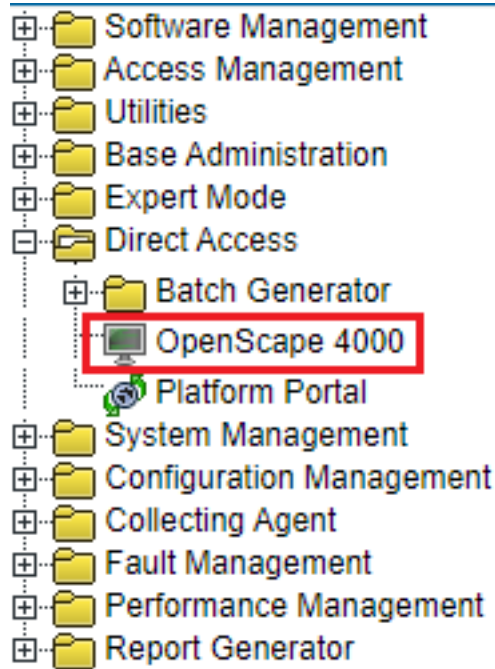
[Security Considerations](#)

1.4 Direct Access

Direct Access is a feature of OpenScape 4000 which enables the user to start the native management application for a network object. Single login means that the user does not have to login to the selected network object. This can only occur if it is possible to pass on the login information to the relevant application.

On Manager:

The Direct Access GUI is accessible via Direct Access --> OpenScape 4000.



For more details, see [Chapter 2.10, "OpenScope 4000 \(Manager\)"](#)

On Assistant:

The feature is a part of the main [Dashboard](#) interface (Component box --> Access column).

The user is able to do following:

1) MML Dialog access via LAP2 dashboard

If you have the access rights, you can open MML Dialog to RMX via the respective link in the Assistant Start Page Dashboard.

NOTICE: If a user does not have the access rights, the link is **NOT** active.

The screenshot shows the LAP2 dashboard interface. On the left is a navigation tree with categories like Software Management, Access Management, Utilities, Base Administration, Expert Mode, Signalling & Payload Encryption, Gateway Manager, Ipttrace Homepage, Platform Portal, SSH connection to Assistant, Permanent Logging, CSTA, System Management, Configuration Management, Collecting Agent, Diagnostics, Performance Management, and Report Generator. The main content area is divided into several sections:

- User Info:** User name: engr (enrg), Client IP: 10.255.100.63, Last successful logon: 2022-03-02 14:18, Last unsuccessful logon: from 10.140.102.120, Number of failed attempts: 0.
- License Management:** System number: L31955Q0510X, Flex and TDM licenses: 58 / 12000, SLES update protection: 7 / 10, Update protection validity: until 2022-12-31, Advanced Locking ID (sys5): +HWNDNLP+PYEDV5HK*RVFNND, License validity: 304 days, Support contract: 304 days.
- Status Board:** System Time: 2022-03-03 12:37 EET, TimeZone and Synchronization Status: OK, Platform Deployment/HW: Simplex / ECOSERVER, Last Data Backup: OK, Last Logical Backup: OK, APE Mode: Not configured in RMX, APE Sync Status: Not configured in RMX.
- Configuration Management:** Upload Status: SYNCHRONOUS, Stations: SYNCHRONOUS, LCR: SYNCHRONOUS, System Data: SYNCHRONOUS, HIM Data: SYNCHRONOUS, HIM SVU: SYNCHRONOUS, HIM ADP: SYNCHRONOUS.
- Component Table:**

Component	System Start date/time	Version	Access
Assistant	2022-02-23 10:57	V10 R1.28.0	[SSH] [SFTP] [File Transfer]
CSTA	2022-02-23 10:57	V10 R1.28.0	[SSH] [SFTP]
Platform	2022-02-23 10:57	V10 R1.28.0	[SSH] [SFTP]
RMX	2022-03-02 13:53	V10 R1.28.0	[ComWin] [File Transfer]
RMX Loadware		V10 R1.28.0*	
OpenScope SBC		0	[SBC]

At the bottom, there are 'Important Hints' and a copyright notice: Copyright (C) 2021 Unify Software and Solutions GmbH & Co. KG 2021. All Rights Reserved. Manufactured by Unify Software and Solutions GmbH & Co. KG.

2) File Transfer to RMX via LAP2 dashboard

If you have the access rights, you can open File Transfer to RMX via the respective link in the Assistant Start Page Dashboard.

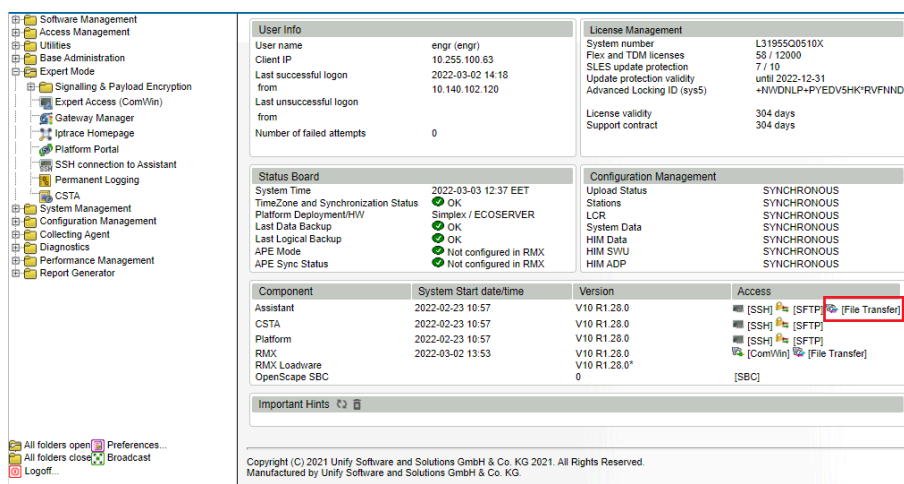
NOTICE: If a user does not have the access rights, the link is **NOT** active.

This screenshot is identical to the one above, showing the LAP2 dashboard interface. The key difference is that in the 'Component Table', the 'Access' column for the 'RMX' component has a red box highlighting the '[File Transfer]' link, indicating that this option is available to the user.

3) File Transfer to Assistant via LAP2 dashboard

If you have the access rights, you can open File Transfer to Assistant via the respective link in the Assistant Start Page Dashboard.

NOTICE: If a user does not have the access rights, the link is **NOT** active.



Notes

- User needs the Expert Access (ComWin) rights, at least System Management read rights and one of AMO access rights from Access Management right group to open correctly the MML Dialog and File Transfer to RMX. This is same as in the previous versions.
- User needs the Expert Access (ComWin) rights and Linux shell access from Access Management right group to open correctly of File Transfer to Assistant. This is same as in the previous versions.
- This feature requires ComWin 5.0.126 or newer

Related Topics

- [User Management](#)
- [Security Considerations](#)
- [Functionality](#)
- [Multi Language Support](#)

1.5 Multi Language Support

The **OpenScope 4000 Assistant/Manager Start Page** provides full multi-language support, i.e. the user will be able to choose between available UI languages. All user-added entries in the application tree are not localized.

In this version the user interface is available in **English** and **German**.

The user interface of the **Configuration Management** component will also be available in French, Italian, Dutch, and Spanish.

To set or change the display language of your web browser, select the corresponding settings in your browser - as described below:

- **Internet Explorer** Open the browser settings (**Tools -> Internet Options**). Open the **Language Preferences** window by clicking the **Languages** button on the **General** page. The following languages will be detected when launching the Start Page using Internet Explorer:
 - German (Germany) [de]
 - English [en]
 - French (only **Configuration Management** user interface)
 - Italian (only **Configuration Management** user interface)
 - Dutch (only **Configuration Management** user interface)
 - Spanish (only **Configuration Management** user interface)
 - Chinese (only **Configuration Management** user interface)
 - Russian (only **Configuration Management** user interface)

The language listed at the top position will be the display language of user interface.

Related Topics

[Start Page User Interface](#)

[Start Page Main Help Topics](#)

1.6 Restrictions

User-defined names

All names added by the user via the dialogs described in the sections [Add Application, page 42](#) and [Modify Application, page 44](#) in the application tree are not localized.

The maximum character length for user-defined application group and folder names is 32 characters.

Related Topics

[Application Tree Modifications](#)

[Start Page Main Help Topics](#)

[Application Tree Customizing](#)

[Multi Language Support](#)

2 Functionality

This section describes the **OpenScope 4000 Assistant/Manager Start Page** user interface and its functionality.

If the **Start Page** is the first **OpenScope 4000 Assistant/Manager** application you start, Access Management forces a user authentication (valid login name and password). This authentication is not required if the session opened with the start of the first OpenScope 4000 application is still valid.

As a user you can only see those entries in the application tree and in the menus which you are authorized for based on access and license information. Thus, if you do not have the required access rights for System Management, all entries leading to a start of System Management are not visible.

The size of the application tree can be changed by the user.

Related Topics

[Start Page - Overview](#)

2.1 Start Page User Interface

The **Start Page** user interface of the Assistant and the Manager respectively consists of the following components:

- [Dashboard](#) (right-hand part)
- [Application Tree Area](#) (left-hand upper part)
- [Menu Area](#) (left-hand lower part)

Application tree area

- Software Management
- Access Management
- Utilities
- Base Administration
- Expert Mode
 - Signalling & Payload Encryption
 - Expert Access (ComWin)
 - Gateway Manager
 - Trace Homepage
 - Platform Portal
 - Permanent Logging
- System Management
- Configuration Management
- Collecting Agent
- Diagnostics
- Performance Management
- Report Generator

Menu area

- All folders open
- All folders close
- Preferences...
- Broadcast
- Logout...

Dashboard

User Info

User name	engr (engr)
Client IP	10.255.100.63
Last successful logon	2022-03-02 14:18
from	10.140.102.120
Last unsuccessful logon	
from	
Number of failed attempts	0

License Management

System number	L31955Q0510X
Flex and TDM licenses	58 / 12000
SLES update protection	7 / 10
Update protection validity	until 2022-12-31
Advanced Locking ID (sys5)	+NWDNLP+PYEDVSHK*RVFNND
License validity	304 days
Support contract	304 days

Status Board

System Time	2022-03-03 12:37 EET
TimeZone and Synchronization Status	OK
Platform Deployment/HW	Simplex / ECOSERVER
Last Data Backup	OK
Last Logical Backup	OK
APE Mode	Not configured in RMX
APE Sync Status	Not configured in RMX

Configuration Management

Upload Status	SYNCHRONOUS
Stations	SYNCHRONOUS
LCR	SYNCHRONOUS
System Data	SYNCHRONOUS
HIM Data	SYNCHRONOUS
HIM SWU	SYNCHRONOUS
HIM ADP	SYNCHRONOUS

Component Table

Component	System Start date/time	Version	Access
Assistant	2022-02-23 10:57	V10 R1.28.0	[SSH] [SFTP] [File Transfer]
CSTA	2022-02-23 10:57	V10 R1.28.0	[SSH] [SFTP]
Platform	2022-02-23 10:57	V10 R1.28.0	[SSH] [SFTP]
RMX	2022-03-02 13:53	V10 R1.28.0	[SSH] [ComWin] [File Transfer]
RMX Load/vware		V10 R1.28.0*	
OpenScope SBC		0	[SBC]

Important Hints

Copyright (C) 2021 Unify Software and Solutions GmbH & Co. KG 2021. All Rights Reserved.
Manufactured by Unify Software and Solutions GmbH & Co. KG.

Related Topics

[Multi Language Support](#)

[Start Page Main Help Topics](#)

[Start Page - Overview](#)

[Start Page Field Descriptions](#)

[Functionality](#)

2.2 Dashboard

The start screens of Assistant and of Manager display useful information about system status in the right-hand pane of the screen. These information are grouped in types within different categories. Some of statuses are specific for Assistant/Manager so only relevant data are displayed for each type of system.

Content of the Dashboard

NOTICE: The given information below differs slightly between Manager and Assistant and may also vary depending on individual system configuration:

The Assistant dashboard includes the following sections:

- User Info:**

User name	enrg (enrg)
Client IP	10.255.100.63
Last successful logon from	2022-03-02 14:18 10.140.102.120
Last unsuccessful logon from	
Number of failed attempts	0
- License Management:**

System number	L31955Q0510X
Flex and TDM licenses	58 / 12000
SLES update protection	7 / 10
Update protection validity	until 2022-12-31
Advanced Locking ID (sys5)	+NWDNLP+PYEDV5HKRVFNND
License validity	304 days
Support contract	304 days
- Status Board:**

System Time	2022-03-03 12:37 EET
TimeZone and Synchronization Status	OK
Platform Deployment/HW	Simplex / ECOSERVER
Last Data Backup	OK
Last Logical Backup	OK
APE Mode	Not configured in RMX
APE Sync Status	Not configured in RMX
- Configuration Management:**

Upload Status	SYNCHRONOUS
Stations	SYNCHRONOUS
LCR	SYNCHRONOUS
System Data	SYNCHRONOUS
HIM Data	SYNCHRONOUS
HIM SVIU	SYNCHRONOUS
HIM ADP	SYNCHRONOUS
- Component Table:**

Component	System Start date/time	Version	Access
Assistant	2022-02-23 10:57	V10 R1.28.0	[SSH] [SFTP] [File Transfer]
CSTA	2022-02-23 10:57	V10 R1.28.0	[SSH] [SFTP]
Platform	2022-02-23 10:57	V10 R1.28.0	[SSH] [SFTP]
RMX	2022-03-02 13:53	V10 R1.28.0	[ComWin] [File Transfer]
RMX Loadware		V10 R1.28.0*	
OpenScope SBC		0	[SBC]

Figure 1: Dashboard: Assistant

The Manager dashboard includes the following sections:

- User Info:**

User name	enrg (enrg)
Client IP	10.255.100.63
Last successful logon from	2022-02-28 11:00 10.255.100.97
Last unsuccessful logon from	
Number of failed attempts	0
- License Management:**

Managed ports	0
Licensed ports	5000
Grace Period	306 days
Advanced Locking ID	JMYVQKTQZWTRJ4M5YF4U2NJ
- Status Board:**

System Time	2022-03-03 13:34 EET
TimeZone and Synchronization Status	OK
Last Data Backup	No backup yet
Last Logical Backup	No backup yet
Last DLS connectivity check	No DLS
- Configuration Management:**

Upload - synchronized	0 systems
Upload - in progress	0 systems
Upload - failure	0 systems
LCR upload - synchronized	0 systems
LCR upload - in progress	0 systems
LCR upload - failure	0 systems
- System Management:**

Count of Assistants	0 systems
Count of APEs	0 systems
- Component Table:**

Component	Version	System Start date/time	Access
Manager	V10 R1.28.0	2022-02-23 11:28	[SSH] [SFTP]
Platform	V10 R1.28.1	2022-02-23 11:28	[SSH] [SFTP]
OpenScope FM	Not installed		
- Important Hints:**

System startup hasn't completed. Some Applications may not be functional. 2022-02-24 10:23:34

Figure 2: Dashboard: Manager

- **User Info**
 - Logged-in user name (account)
 - Client's IP number
 - Information about last successful and not successful connections
 - Number of failed login attempts
- **License Management**
 - System number (Assistant only)
 - Count of used/available FLEX and TDM licenses (Assistant only)
 - Managed ports (Manager only)
 - Licensed ports (Manager only)
 - SLES upgrade protection (Assistant only)
 - Upgrade protection validity (Assistant only)
 - Advanced Locking ID
 - Status of 'grace period' (if applicable: spare time for license use)
- **Status Board**
 - Server (system) time, time zone and operating system
 - Platform deployment and Hardware
 - Status of last backups
 - Assistant only: Status of last APE (Access Point Emergency) synchronization
 - Manager only: Status of DLS (Deployment Service) connectivity
- **Configuration Management**
 - Status of uploads (Assistant: 6 types of upload, Manager: 2 upload types)
- **Component**
 - Assistant/Manager version, uptime and File Transfer (Assistant only)
 - Assistant only: Platform version and uptime
 - Assistant only: RMX version, uptime, access to ComWin and File Transfer
 - Assistant only: CSTA (Computer Supported Telecommunications Application) version and uptime
 - Assistant only: SG version running on platform
 - OpenScape FM version
 - OpenScape version
- **Important Hints**
 - Displays important messages about system status. Messages are the same as in **Message of the day** dialog displayed during logon to system
- **SSO (Manager only)**
 - Status of last SSO synchronization
 - State of configuration/installation
- **System Management (Manager only)**
 - Count of assigned OpenScape, APEs

Related Topics

[Start Page User Interface](#)

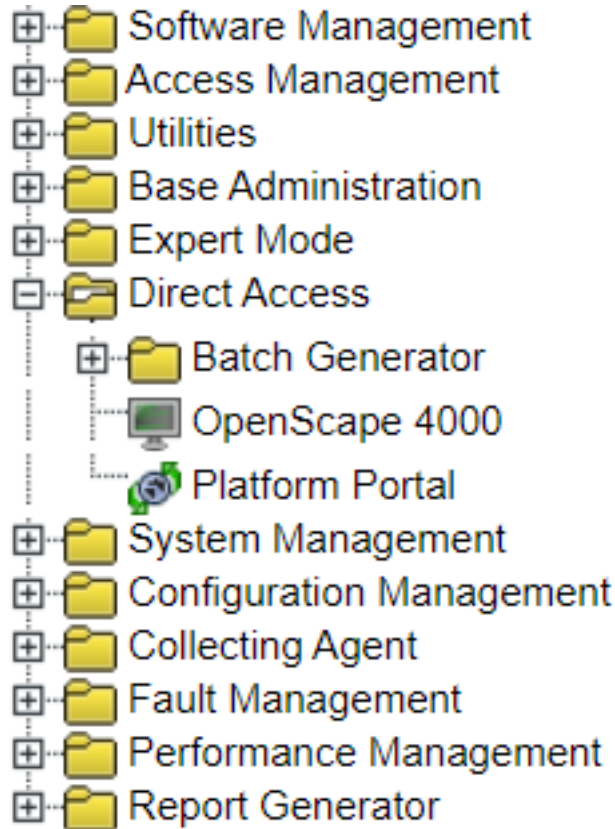
[Multi Language Support](#)

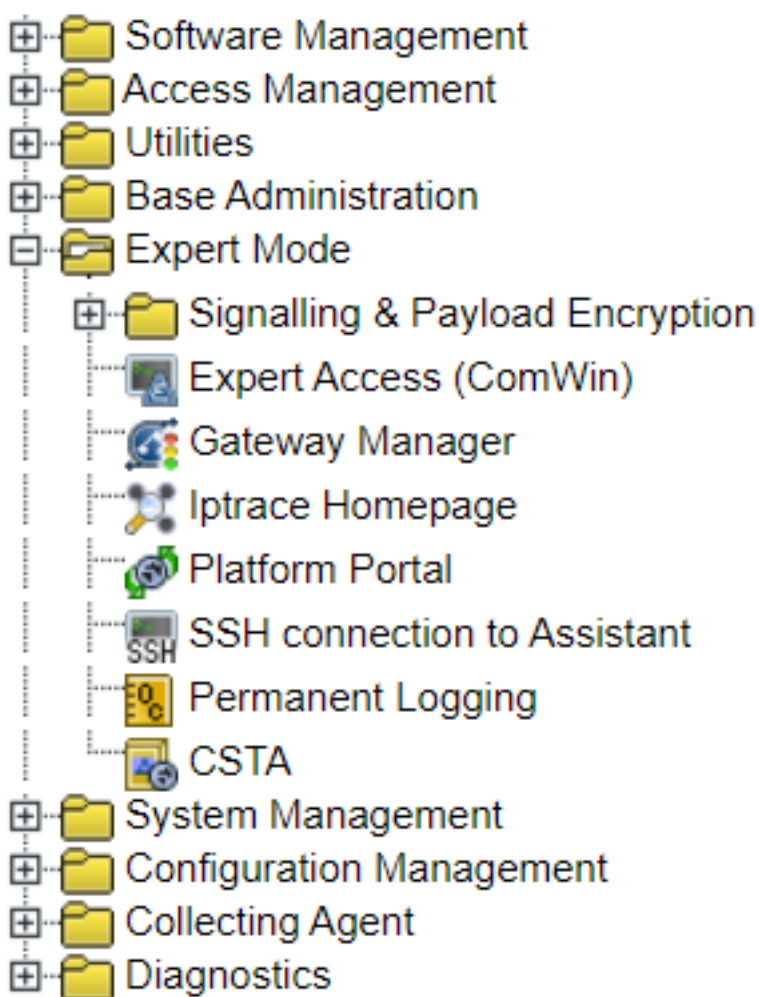
[Dashboard](#)

Application Tree Area
Menu Area

2.3 Application Tree Area

The **Application Tree** on the **Start Page** is used to start applications. The application tree displays all applications which the customer has bought and the current user has the rights to use.





The application tree consists of the following elements:

- Application Groups
- Folders
- Applications

Application groups are used to organize the complete application tree and collect applications belonging to the same task group.

Folders can be used to organize the applications inside an application group. Folders can be used recursively.

When you click an application link on the Start Page, the application is launched, and passes on all required parameters. If parameters are needed which belong to a special network object, the Select Network Object dialog opens, and you have to select one. If only one network object belongs to the selected application the dialog for selecting a network object will not be shown and the parameters of this network object will automatically be used.

Parameters can contain several place-holders which are filled in at runtime. Possible place-holders are:

- Session token (access key) - %s
- Network object ID (4-digit mnemonic) - %n
- Network object address (IP address of network object) - %i

- Server address (IP address of server) - %a
- URL - %u

The place-holders "Network object ID", "Network object address", "Server address", and "URL", are related to the selected network object. This means that the parameters are used as defined for that network object via System Management. For additional information please refer to the System Management online help.

Related Topics

[Application Tree Modifications](#)

[Object Names in the Application Tree](#)

[Context Menu for the Application Tree](#)

[Multi Language Support](#)

[Start Page User Interface](#)

[OpenScape 4000 \(Manager\)](#)

2.4 Menu Area

The **Start Page** menu area contains the following entries:

[All folders open](#)

[All folders closed](#)

[Broadcast](#)

[Preferences](#)

[Logoff](#)

[Help](#)

The menu icons are described in detail in the corresponding sections.

Related Topics

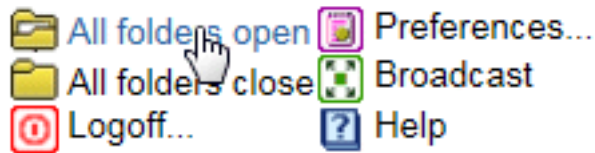
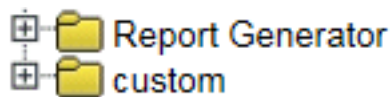
[Start Page User Interface](#)

[Start Page Main Help Topics](#)

[Multi Language Support](#)

2.4.1 All folders open

The **All folders open** icon in the menu area is used for making visible all folders and applications in all application groups in the Application Tree.

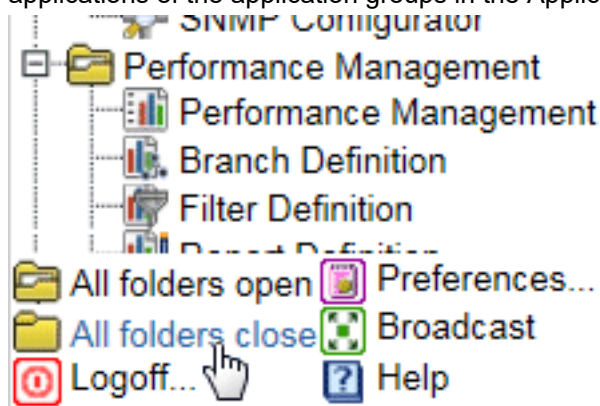


Related Topics

- [Start Page User Interface](#)
- [Dashboard](#)
- [Application Tree Area](#)
- [Menu Area](#)

2.4.2 All folders closed

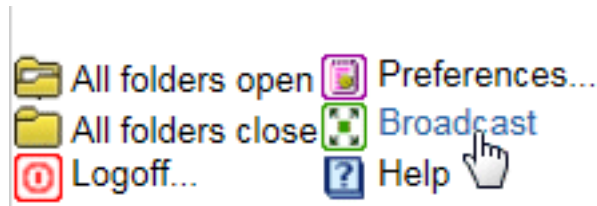
The **All folders closed** icon in the menu area is used for closing all folders and applications of the application groups in the Application Tree.



Related Topics

- [Start Page User Interface](#)
- [Dashboard](#)
- [Application Tree Area](#)
- [Menu Area](#)

2.4.3 Broadcast



Clicking the **Broadcast** icon opens the **Broadcast Message Window**. The Broadcast Message dialog is described in [Broadcast Message](#). This dialog can be used for sending broadcast messages to all connected network objects including the sender.

Maximum length of the message is restricted to 60 characters, @ and # are allowed, but not as a string "@#".

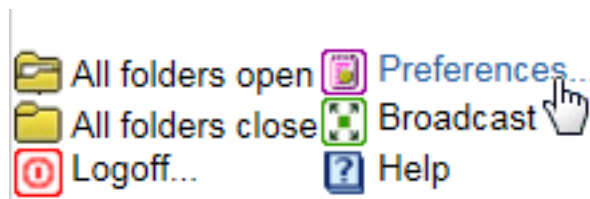
Related Topics

[Start Page User Interface](#)

[Dashboard](#)

[Menu Area](#)

2.4.4 Preferences



The **Preferences** icon on the menu area is used to customize the Application Tree. Clicking this icon, the **Preferences** window is opened, containing the **General** tab and the **Customize** tab.

NOTICE: The Customize tab and functionality exists on a OpenScape 4000 Manager only!

The **General** tab and **Customize** tab are described in detail in the following sections.

Related Topics

[Start Page User Interface](#)

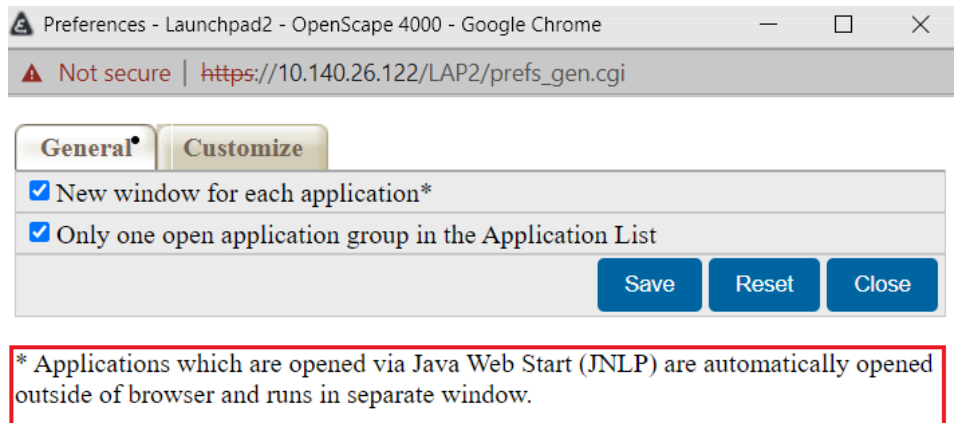
[Dashboard](#)

[Menu Area](#)

[Application Tree Modifications](#)

[Application Tree Customizing](#)

2.4.4.1 General



User preferences can be set in the **General** tab of **Preferences** window.

There are 2 checkbox options to be selected in the **General** tab:

New window for each application

If checked, new window is opened for each application that the user starts. If unchecked, each started application is opened on the Logo Area.

Only one application group in the Application List

If checked, only one application group on the Application Tree is opened at one time and the other previously opened application groups are closed automatically (the application does not close down by itself).

If unchecked, there may be more than one application groups be opened from the Application Tree at the same time.

Buttons

Save	This button is used to save the selected user preferences in the system.
Reset	This button is used to uncheck all the selected preferences.
Close	This button is used to close the Preferences window. At closing the window, only the changed settings are saved only, if the Save button was clicked before.

Note "Applications which are opened via Java Web Start (JNLP) are automatically opened outside of browser and runs in separate window"

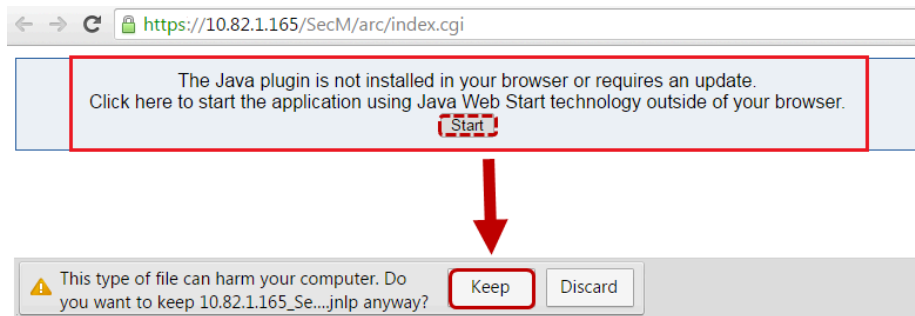
Java applets require a Java plugin to be installed inside of the browser. For the browsers that do not support the Java plugin (for example Google Chrome), **Java Web Start technology** (JNLP file with a definition of a given application) represents an alternative approach that allows user to launch the applets outside of browser.

NOTICE: Java Runtime Environment and Applet Cache Manager are still required to be installed on client PC.

JNLP file is specific for each application and is generated during the startup of the application:

- 1) Select an application from the Application Tree and click to open it.
 - If **Java plugin is installed**, the application is started in a usual way, in a new tab.
 - If **Java plugin is not installed**, you will be notified and a *JNLP file is automatically provided for download and execution.

NOTICE: The behavior may vary based on browser. if the *JNLP file is not provided for download automatically, you can initiate the process via the "Start" button.

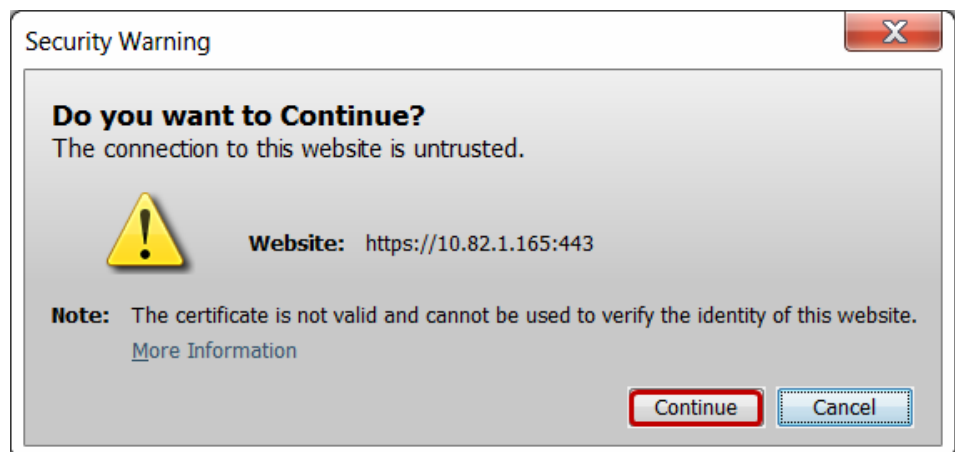


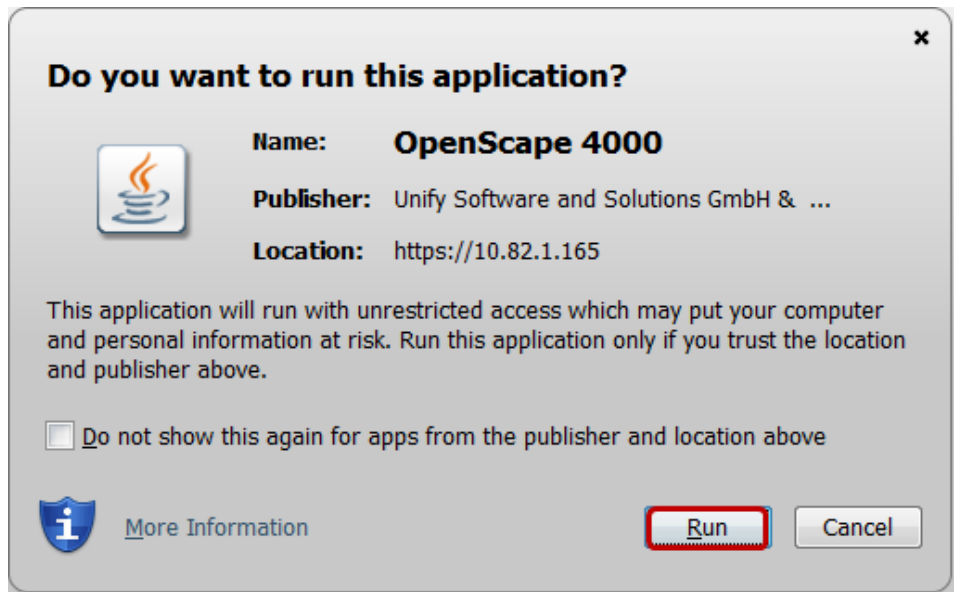
- 2) Double click the downloaded *JNLP file to open it. The application will start in a new window.

NOTICE: The downloaded *JNLP file is valid for two hours only. When expired, it has to be downloaded again.

Troubleshooting note:

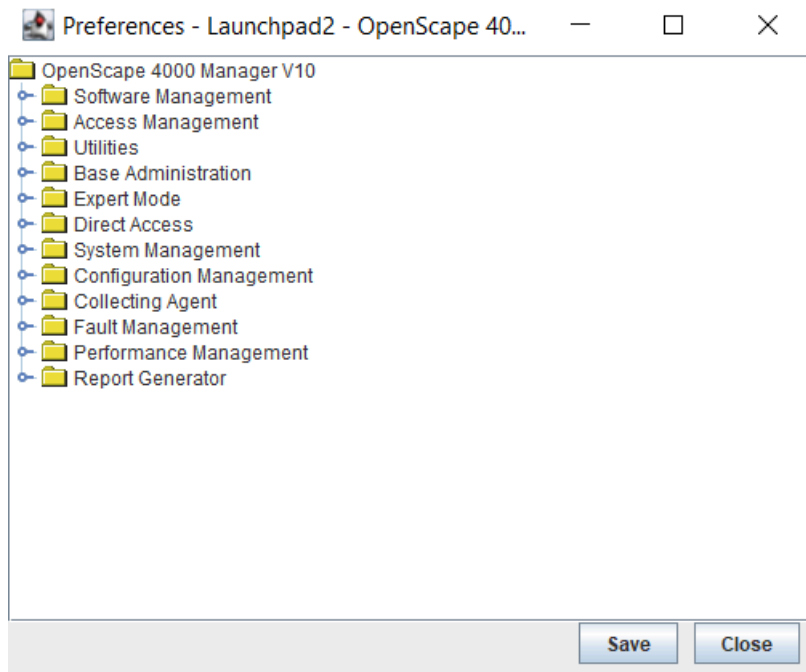
If you see following warnings, your certificate is not valid. For the instructions of how to generate a valid certificate, see the OpenScape 4000 Assistant/Manager, Access Management documentation.





2.4.4.2 Customize

NOTICE: This functionality exists on a OpenScape 4000 Manager only!



The modifications which are described in **Application Tree Modifications** are done in the **Customize** tab. Customize operations are described in detail in the corresponding sections.

Buttons

Save	This button is used to save the modifications to the Application Tree.
Close	This button is used to close the Preferences window.

Related Topics

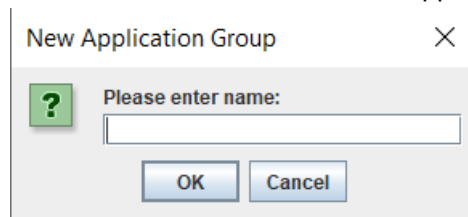
- [Dashboard](#)
- [Application Tree Modifications](#)
- [Application Tree Customizing](#)
- [Menu Area](#)
- [Object Names in the Application Tree](#)
- [Context Menu for the Application Tree](#)
- [Security Considerations](#)
- [Context Menu: New](#)
- [Context Menu: Delete](#)
- [Context Menu: Rename](#)
- [Add Application](#)
- [Modify Application](#)

2.4.4.3 Context Menu: New

Selecting **New** on the context menu of an application group, folder or application opens a dialog box, where the required information is to be entered.

Application Group

This menu entry is used to create a new application group. Clicking on **Application Group** opens the **New Application Group** dialog where the user has to enter the name of the new application group.



New application groups are inserted at the end of the Application Tree. Only user-defined application groups can be edited and deleted by authorized users.

See also [Context Menu for the Application Tree](#)

Application

This menu entry is used to create a new application. Clicking on **Application** opens the **Add Application** dialog described in [Add Application](#), where the user has to enter all parameters for the new application.

New applications are inserted at the end of the currently selected application group and in the currently selected folder. User-defined new applications can be edited and deleted by authorized users.

See also [Context Menu for the Application Tree](#) and [Add Application](#)

Folder

This menu entry is used to create a new folder. Clicking on **Folder** opens the **New Folder** dialog where the user has to enter the name of the new folder.

New folders are inserted at the end of the currently selected application group and in the currently selected folder. User-defined new folders can be edited and deleted by authorized users.

See also [Context Menu for the Application Tree](#)

Related Topics

[Context Menu: Delete](#)

[Context Menu: Modify Application](#)

[Context Menu: Rename](#)

Note "Applications which are opened via Java Web Start (JNLP) are automatically opened outside of browser and runs in separate window"

[Broadcast](#)

[Logoff](#)

[Start Page User Interface](#)

[Dashboard](#)

[Application Tree Modifications](#)

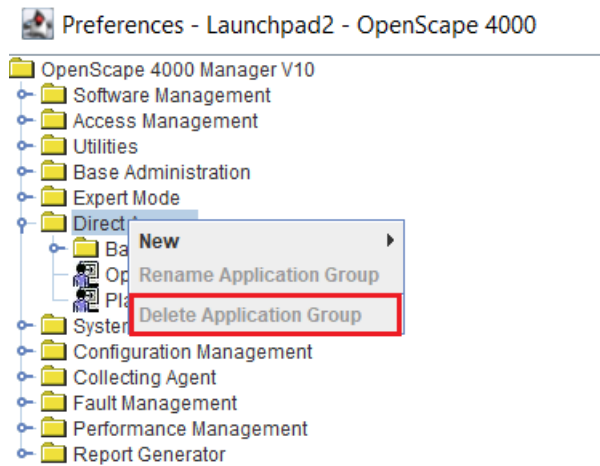
[Application Tree Customizing](#)

[Context Menu for the Application Tree](#)

2.4.4.4 Context Menu: Delete

The **Delete** menu entry in the context menu of an application group, folder or application is used to delete the selected entry.

NOTICE: **Delete** can only be used with user-defined applications, folders or groups. Predefined default applications, folders and groups can not be deleted. Consequentially, these menu entries are grayed out in the context menu if a predefined default application has been selected.



Application Group

User-defined application groups can only be deleted if they are empty, i. e. if they do not contain any elements. If you try to delete a user-defined application group that contains folders and/or applications, a warning will be displayed alerting you that the selected application group is not empty and may contain applications which are not accessible to the current user.

Predefined default application groups can not be deleted.

Folder

User-defined application folders can only be deleted if they are empty, i. e. if they do not contain any elements. If you try to delete a user-defined application folder that contains subfolders and/or applications, a warning will be displayed alerting you that the selected application folder is not empty and may contain applications which are not accessible to the current user.

Predefined default folders can not be deleted.

Application

Selecting **Application** deletes the currently selected application.

Related Topics

[Context Menu: New](#)

[Context Menu: Modify Application](#)

[Context Menu: Rename](#)

[Broadcast](#)

[Logoff](#)

[Note "Applications which are opened via Java Web Start \(JNLP\) are automatically opened outside of browser and runs in separate window"](#)

[Start Page User Interface](#)

[Dashboard](#)

[Application Tree Modifications](#)

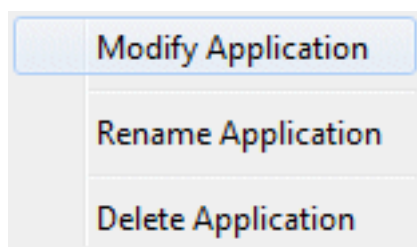
[Application Tree Customizing](#)

Context Menu for the Application Tree

2.4.4.5 Context Menu: Modify Application

When the user selects the **Modify Application** entry on the context menu of an application, the **Modify Application** window is opened to modify the selected application information.

NOTICE: **Modify Application** can only be used with user-defined applications. Predefined default applications can not be modified. Consequentially, this menu entry is grayed out in the context menu if a predefined default application has been selected.



The selection of **Application** is only enabled if an application is selected in the application tree, and leads to the dialog described in [Modify Application](#).

Related Topics

[Context Menu: New](#)

[Context Menu: Delete](#)

[Context Menu: Rename](#)

[Broadcast](#)

[Logoff](#)

Note "Applications which are opened via Java Web Start (JNLP) are automatically opened outside of browser and runs in separate window"

[Start Page User Interface](#)

[Dashboard](#)

[Application Tree Modifications](#)

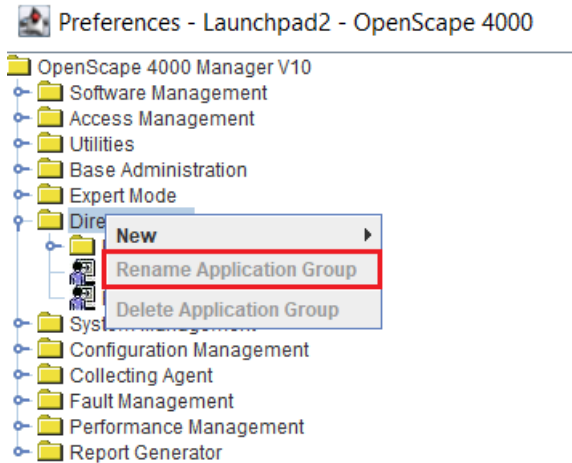
[Application Tree Customizing](#)

[Context Menu for the Application Tree](#)

2.4.4.6 Context Menu: Rename

When the user selects **Rename** entry on the context menu of an application group, folder or application, the selected entry becomes editable to enter the new name.

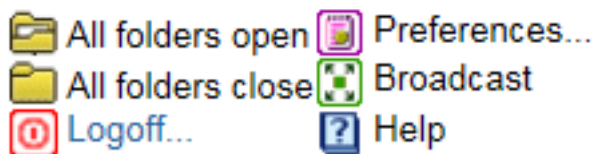
NOTICE: Rename can only be used with user-defined applications, folders or groups. Predefined default applications, folders and groups can not be renamed. Consequentially, this menu entry is grayed out in the context menu if a predefined default application has been selected.



Related Topics

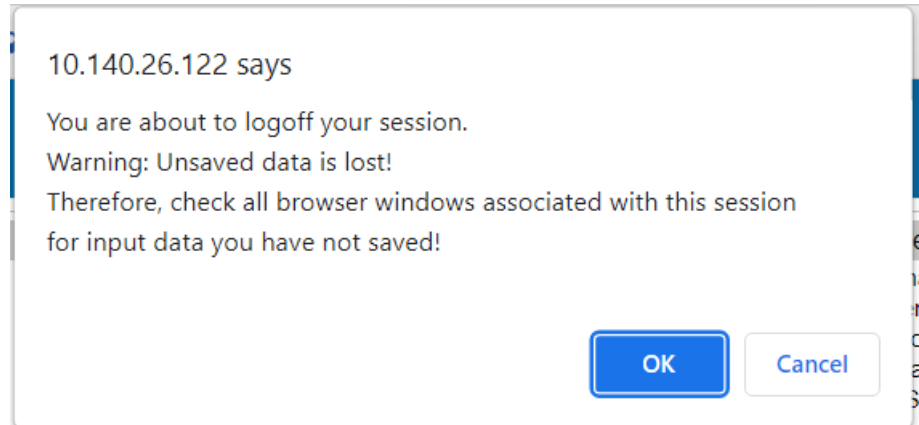
- [Context Menu: New](#)
- [Context Menu: Delete](#)
- [Context Menu: Modify Application](#)
- [Broadcast](#)
- [Logoff](#)
- [Note "Applications which are opened via Java Web Start \(JNLP\) are automatically opened outside of browser and runs in separate window"](#)
- [Start Page User Interface](#)
- [Dashboard](#)
- [Application Tree Modifications](#)
- [Application Tree Customizing](#)
- [Context Menu for the Application Tree](#)

2.4.5 Logoff



When the **Logoff** icon on the **Menu Area** is clicked, a warning message dialog is displayed, warning you that all unsaved data will be lost, and prompting

you to save all your data, close all browser windows belonging to the current session, and confirm that you want to log off.



Related Topics

[Start Page Main Help Topics](#)

[Start Page User Interface](#)

[Dashboard](#)

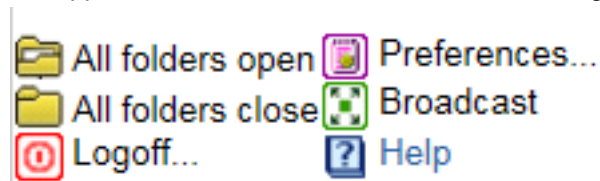
[Application Tree Area](#)

[Menu Area](#)

2.4.6 Help

NOTICE: The Help button and functionality exists on a OpenScape 4000 Manager only!

When the **Help** icon on the **Menu Area** is clicked, the online help that you are currently using is opened. The online help describes the main functionality of the application, the user interface, and the existing fields in the user interface.



Related Topics

[Start Page Main Help Topics](#)

[Start Page User Interface](#)

[Menu Area](#)

2.5 Application Tree Modifications

You can add applications, folders and groups to the application tree, and you can remove, modify and delete these user-defined applications.

To do this, you need to click **Preferences** icon on the **Menu Area** and select **Customize** tab on the Preferences window.

To modify the application tree you need to be authorized to "customize the application tree" (see [Security Considerations](#)). The operations **Add**, **Modify**, **Delete** and **Rename** in the context menu can only be performed if the **Customize** tab in the **Preferences** window is enabled (see [Note "Applications which are opened via Java Web Start \(JNLP\) are automatically opened outside of browser and runs in separate window"](#)).

NOTICE: Modify, Rename and Delete can only be used with user-defined applications, folders or groups. Predefined default applications, folders and groups can not be modified, renamed or deleted.

The order of entries in the application tree can be changed by the user via drag and drop.

All operations are performed directly in the **Customize** tab of the **Preferences** window.

Parameters can contain several place-holders which are filled in at runtime. Possible place-holders are:

- Session token (access key) - %s
- Network object ID (4-digit mnemonic) - %n
- Network object address (IP address of network object) - %i
- Server address (IP address of server) - %a
- URL - %u

The place-holders "Network object ID", "Network object address", "Server address", and "URL", are related to the selected network object. This means that the parameters are used as defined for that network object via System Management. For additional information please refer to the System Management online help.

Related Topics

[Multi Language Support](#)

[Start Page User Interface](#)

[Dashboard](#)

[Menu Area](#)

[Application Tree Area](#)

[Application Tree Customizing](#)

[Object Names in the Application Tree](#)

[Context Menu for the Application Tree](#)

[Security Considerations](#)

2.6 Add Application

The **Add Application** dialog is used to add a new application to the currently opened application group.

NOTICE: Only user-defined applications that have been added using the **New** feature can be edited and/or changed by the user. **Modify**, **Rename** and **Delete** can only be used with user-defined applications, folders or groups. Predefined default applications, folders and groups can not be modified, renamed or deleted. Consequentially, these menu entries are grayed out in the context menu if a predefined default application has been selected.

Add Application
✕

Application Group Direct Access

Application Name

Interaction With Network Object none ▾ Required

Select Icon for Application Tree...

Application Data

Web Application

URL:

Windows Application

Executable Browse

Parameters

OK Cancel Help

Field Descriptions

[Application Group](#)

[Application Name](#)

[Interaction with Network Object Type](#)

[Required](#)

[Select Icon for Application Tree](#)

[Web Application](#)

[URL](#)
[Windows Application](#)
[Executable](#)
[Parameters](#)
[Browse](#)

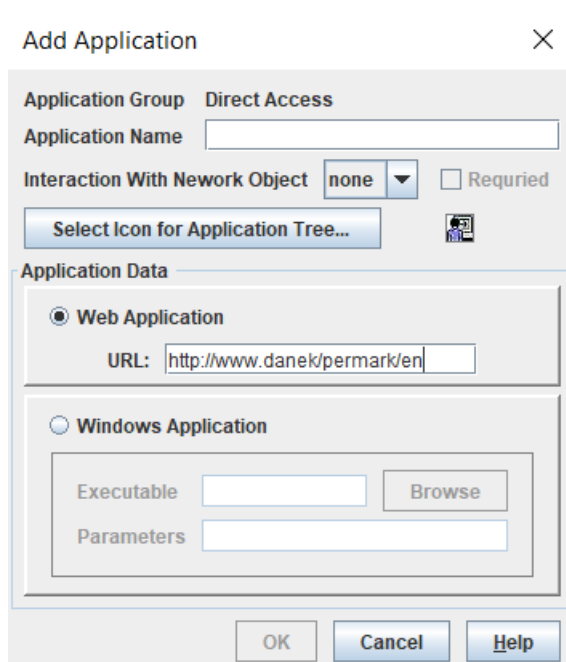
Related Topics

[Start Page Main Help Topics](#)
[Multi Language Support](#)
[Dashboard](#)
[Menu Area](#)
[Note "Applications which are opened via Java Web Start \(JNLP\) are automatically opened outside of browser and runs in separate window"](#)
[Context Menu: New](#)
[Context Menu: Delete](#)
[Context Menu: Modify Application](#)
[Context Menu: Rename](#)
[Modify Application](#)
[Application Tree Modifications](#)
[Application Tree Customizing](#)

2.7 Modify Application

The **Modify Application** dialog is used to modify an existing application added by the user (dynamically added) (see [Add Application](#)). The application can not be renamed in this dialog.

NOTICE: Modify, Rename and Delete can only be used with user-defined applications, folders or groups. Predefined default applications, folders and groups cannot be modified, renamed or deleted. Consequentially, these menu entries are grayed out both in the context menu if a predefined default application has been selected.



Field Descriptions

[Interaction with Network Object Type](#)

[Required](#)

[Select Icon for Application Tree](#)

[Web Application](#)

[URL](#)

[Windows Application](#)

[Executable](#)

[Parameters](#)

[Browse](#)

Related Topics

[Start Page Main Help Topics](#)

[Multi Language Support](#)

[Dashboard](#)

[Menu Area](#)

Note "Applications which are opened via Java Web Start (JNLP) are automatically opened outside of browser and runs in separate window"

[Context Menu: New](#)

[Context Menu: Delete](#)

[Context Menu: Modify Application](#)

[Context Menu: Rename](#)

[Modify Application](#)

[Application Tree Modifications](#)

Functionality

Object Names in the Application Tree

[Application Tree Customizing](#)

2.8 Object Names in the Application Tree

Here it is important to distinguish between two types of entries in the application tree: Standard applications and the dynamically added (user-defined) applications. The names of the standard applications are localized, and the user cannot rename or delete them during runtime. The names of the dynamically added applications are not localized but the user can rename and delete them. The same is valid for folders and application groups in the application tree.

Related Topics

[Start Page User Interface](#)

[Multi Language Support](#)

[Dashboard](#)

[Menu Area](#)

[Application Tree Area](#)

[Application Tree Modifications](#)

[Application Tree Customizing](#)

[Context Menu for the Application Tree](#)

[Security Considerations](#)

2.9 Context Menu for the Application Tree

The **context menu** of the application tree is only displayed when the **Customize** tab in the **Preferences** window is selected (see also [Customize](#)).

To open the context menu, select the desired object (application, folder or group) in the display area or move the mouse pointer on the empty display area and press the right mouse button. Depending on the object selected, the context menu will display the corresponding specific options.

NOTICE: Modify, Rename and Delete can only be used with user-defined applications, folders or groups. Predefined default applications, folders and groups cannot be modified, renamed or deleted. Consequentially, these menu entries are grayed out in the context menu if a predefined default application has been selected.

Related Topics

[Empty Area Context Menu](#)

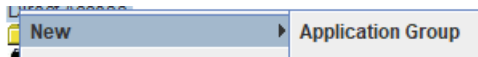
[Application Context Menu](#)

[Folder Context Menu](#)

[Application Group Context Menu](#)

2.9.1 Empty Area Context Menu

If the user right clicks on an **empty area** of the application tree, the following context menu appears:



New -> Application Group

New application groups are inserted at the end of the application tree. New folders are inserted at the end in the current application group.

Related Topics

[Application Context Menu](#)

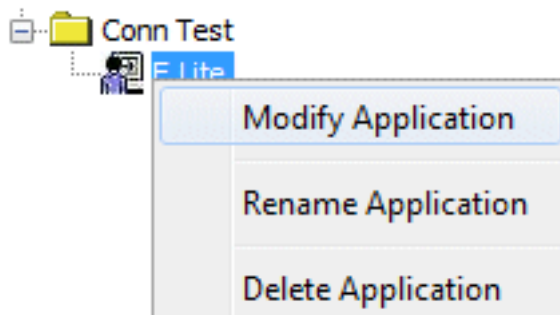
[Folder Context Menu](#)

[Application Group Context Menu](#)

[Logoff](#)

2.9.2 Application Context Menu

If the user right clicks on an application entry in the **Customize** tab of the **Preferences** window, the context menu contains the entries shown below.



Modify Application

The selection of **Modify Application** in the context menu opens the dialog with the same name described in [Modify Application](#).

Rename Application

The rename operation is directly performed in the application tree. Only applications which were inserted by the user via the **Add Application** dialog described in [Add Application](#) can be renamed. This entry is disabled for all predefined applications.

Delete Application

User-defined applications can only be deleted (using **Delete Application**) if they are empty, i.e. if they do not contain any sub-elements.

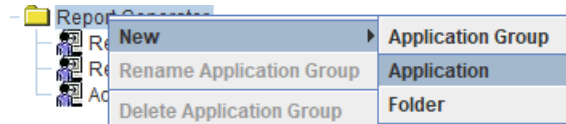
Related Topics

[Empty Area Context Menu](#)

- [Folder Context Menu](#)
- [Application Group Context Menu](#)
- [Logoff](#)

2.9.3 Folder Context Menu

If the user right clicks on a folder entry in the **Customize** tab of the **Preferences** window, the context menu contains the entries shown below.



New -> Application / New -> Folder

New folders and applications are inserted into the currently selected application group and into the currently selected folder. The selection of **Application** leads to the **Add Application** dialog described in [Add Application](#).

Rename Folder

Only folders inserted by the user can be renamed. This entry is disabled for predefined default folders.

Delete Folder

User-defined application folders can only be deleted (using **Delete Folder**) if they are empty, i.e. if they do not contain any elements. If you try to delete a user-defined application folder that contains subfolders and/or applications, a warning will be displayed alerting you that the selected application folder is not empty and may contain applications which are not accessible to the current user.

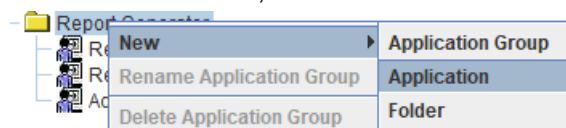
Predefined default folders can not be deleted.

Related Topics

- [Empty Area Context Menu](#)
- [Application Context Menu](#)
- [Application Group Context Menu](#)
- [Logoff](#)

2.9.4 Application Group Context Menu

If the user right clicks on an application group in the **Customize** tab of the **Preferences** window, the context menu contains the entries shown below.



New -> Application Group

New application groups are inserted at the end of the application tree.

New -> Application

New applications are inserted into the currently selected application group and into the currently selected folder. The selection of **Application** leads to the **Add Application** dialog described in [Add Application](#).

New -> Folder

New folders are inserted into the currently selected application group and into the currently selected folder. The selection of **Folder** leads to the dialog described in [Folder](#).

Rename Application Group

Only application groups inserted by the user can be renamed. This entry is disabled for predefined application groups.

Delete Application Group

User-defined application groups can only be deleted (using **Delete Application Group**) if they are empty, i. e. if they do not contain any elements. If you try to delete a user-defined application group that contains folders and/or applications, a warning will be displayed alerting you that the selected application group is not empty and may contain applications which are not accessible to the current user.

Predefined default application groups can not be deleted.

Related Topics

[Start Page User Interface](#)

[Start Page Main Help Topics](#)

[Dashboard](#)

[Menu Area](#)

[Application Tree Area](#)

[Application Tree Modifications](#)

[Application Tree Customizing](#)

[Empty Area Context Menu](#)

[Application Context Menu](#)

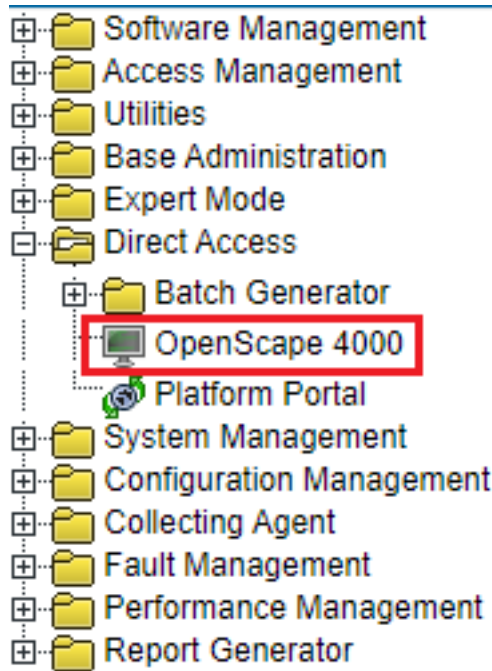
[Folder Context Menu](#)

[Logoff](#)

2.10 OpenScape 4000 (Manager)

This dialog enables user to start the native management application for a network object.

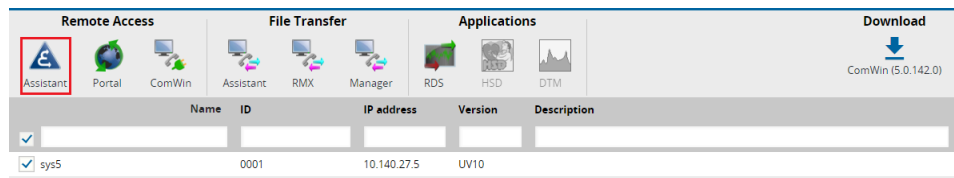
Go to Direct Access --> OpenScape 4000 to open the GUI.



2.10.1 Icon Description

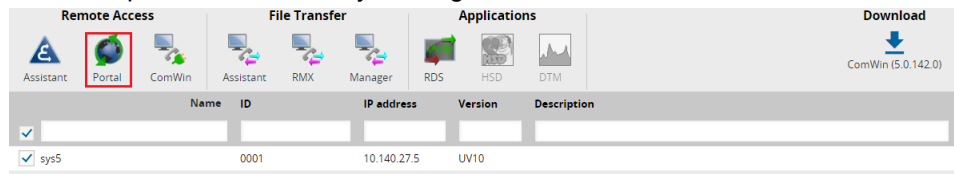
Assistant Remote Access

You can open the Assistant web page from Manager by clicking the Assistant icon.



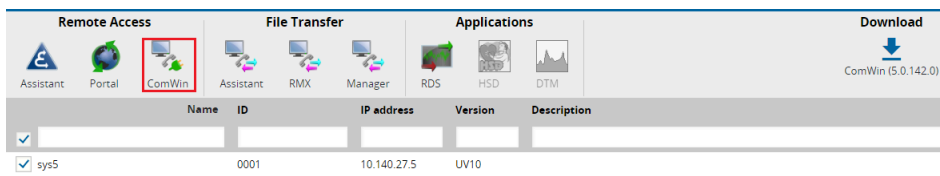
Portal Remote Access

You can open Switch Portal by clicking the Portal icon.



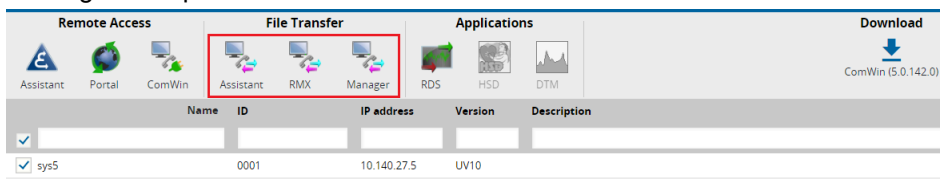
ComWin Remote Access

You can open ComWin with direct access to Switch RMX by clicking the ComWin icon.



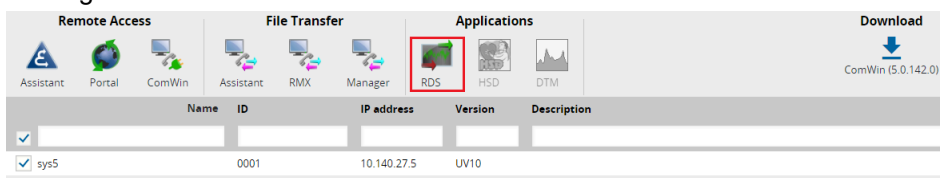
File Transfer to Assistant, Manager and RMX

You can open File Transfer over ComWin to Assistant, RMX, Manager by clicking the respective icon.



Realtime Diagnosis System

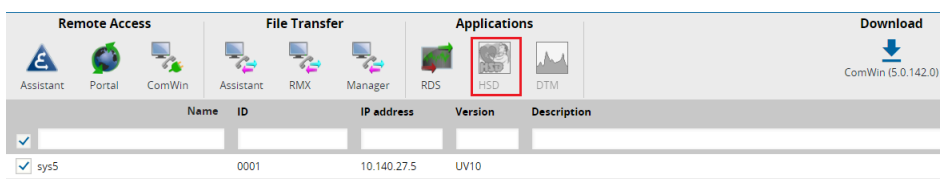
You can open Realtime Diagnosis System (RDS) application on Assistant by clicking the RDS icon.



Hardware and Symptom Diagnosis

You can open Hardware and Symptom Diagnosis (HSD) application on Assistant by clicking the HSD icon.

NOTICE: Only for supported versions.

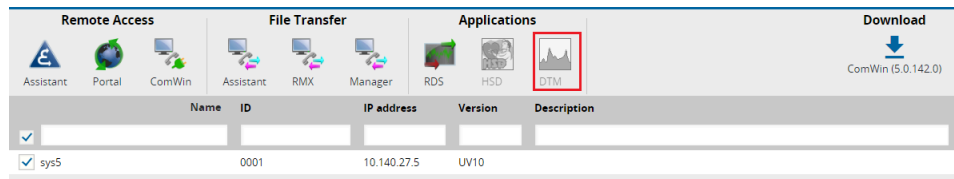


Dynamic Traffic Monitoring

You can open Dynamic Traffic Monitoring (DTM) application on Assistant by clicking the DTM icon.

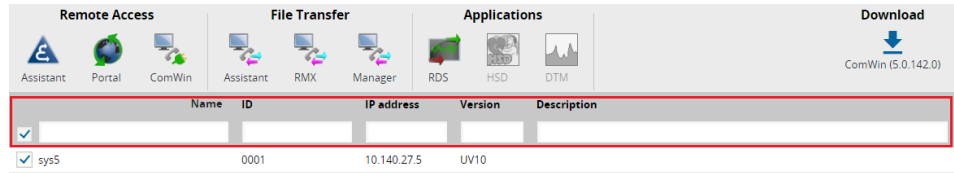
NOTICE: Only for supported versions.

Functionality



Columns filtering and sorting

You can filter and sort switches by each column.



Multi selection of switches

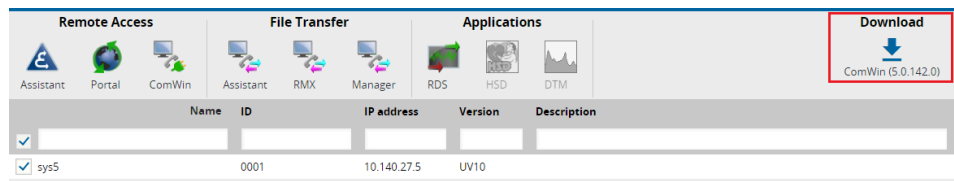
You can select multiple Switches and open connection to more of them just by one click.

NOTICE: For this feature, the user has to enable pop-ups in browser for given site.

<input type="checkbox"/>	Switch V5	0003	10.82.61.5	UV5	Testlab v5
<input checked="" type="checkbox"/>	Switch B	0002	10.82.60.5	UV8	Testlab v8
<input checked="" type="checkbox"/>	Switch A	0001	10.82.48.5	UV8	Testlab v8

ComWin download

You can download ComWin from new DA GUI by clicking the Download ComWin icon..



Notes

- From Manager use unsecure connection to Switch RMX.
- This Feature requires ComWin 5.0.127 or newer.
- ComWin MML and File Transfer do NOT work in multiselection - they are opened only into one of the selected switches.

Related Topics

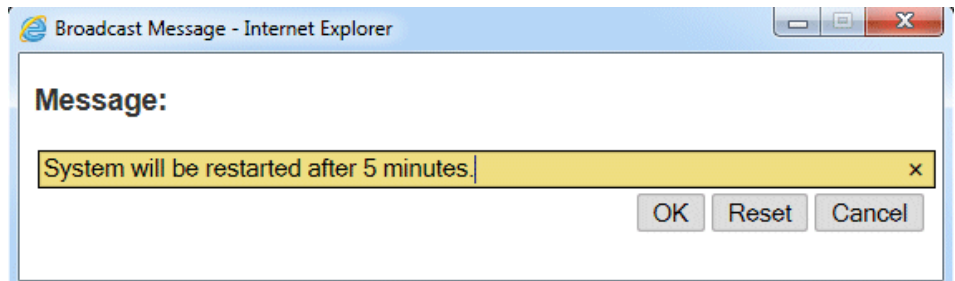
[Start Page User Interface](#)

[Start Page Main Help Topics](#)

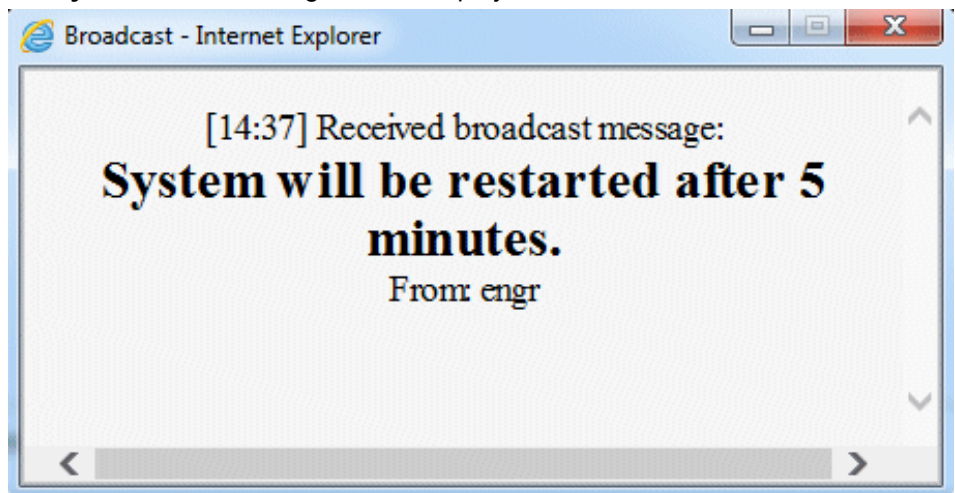
[Direct Access](#)

2.11 Broadcast Message

The administrator is able to send a message to all users currently online. The **Broadcast Message** dialog is opened when the user clicks on the **Broadcast** icon in the **Menu Area**.



After entering the message text in the **Message** field and clicking the **Submit Query** button, the message will be displayed on all online users' screens.



Field	Description	Values	Notes
Message	Message to send	max. Length: 60	not "@"

Field Descriptions

[Message](#)

Related Topics

[Broadcast](#)

[Start Page Main Help Topics](#)

2.12 Security Considerations

The **OpenScape 4000 Assistant/Manager Start Page** has two special user authorization levels:

- Customize the application tree
- Send broadcast message

Functionality

Application Tree Customizing

The first level allows the user to modify the application tree (adding applications, ordering entries, etc.) and the second level controls the availability of the **Broadcast** icon in the **Menu Area** (see [Menu Area](#)).

Each user who has to deal with these features must be assigned an authorization level in the **Access Right Configuration** (ARC) area of Access Management. For additional details please refer to the Access Management online help.

Related Topics

[Start Page Main Help Topics](#)

[Broadcast Message](#)

[Start Page User Interface](#)

[Dashboard](#)

[Application Tree Modifications](#)

[Application Tree Customizing](#)

[Broadcast](#)

2.13 Application Tree Customizing

If you are authorized to "customize the application tree" you can use the dialogs described in [Add Application](#) and [Modify Application](#) to add and modify user-defined applications in the application tree, and delete and rename network objects directly in the application tree. These changes are written to the files that are stored by Launchpad2 in a private area. When you finished customizing and press the "Save" button in the **Preferences** window, the changes will be written into these files. When you close the **Preferences** window and Start Page is refreshed, you will see the changes. The other sessions of the same user will get the changes when the **Start Page** is refreshed manually.

Related Topics

[Start Page User Interface](#)

[Multi Language Support](#)

[Dashboard](#)

[Menu Area](#)

[Application Tree Area](#)

[Application Tree Modifications](#)

[Object Names in the Application Tree](#)

[Context Menu for the Application Tree](#)

2.14 Error Messages

While working with the **Start Page** you may get error messages if required conditions are not met. The error messages may indicate two possible causes:

- Communication errors
- Missing applications.

3 Step By Step Overview

This section contains step-by-step overview for using the Start Page and performing supported actions.

Getting Started

[Start Page - Overview](#)

[Multi Language Support](#)

[Start Page User Interface](#)

[Help](#)

Enabling/Disabling the Customize Mode

[Application Tree Customizing](#)

Note "Applications which are opened via Java Web Start (JNLP) are automatically opened outside of browser and runs in separate window"

[General](#)

Using the Context Menu

[Empty Area Context Menu](#)

[Application Context Menu](#)

[Folder Context Menu](#)

[Application Group Context Menu](#)

[Context Menu: New](#)

[Context Menu: Modify Application](#)

[Context Menu: Rename](#)

[Context Menu: Delete](#) application group, application or folder

[Add Application](#)

[Modify Application](#)

Re-arranging Objects in the Application Tree

- 1) [Application Tree Modifications](#) - Rearrange applications, folders or application groups using Drag&Drop.

4 Start Page Field Descriptions

This section contains the Start Page Field Help, sorted by topics.

The following areas are covered:

[Add Application](#)

[Modify Application](#)

[Broadcast Message](#)

[Select a Network Object](#)

4.1 Add Application

[Application Group](#)

[Application Name](#)

[Interaction with Network Object Type](#)

[Required](#)

[URL](#)

[Executable](#)

[Parameters](#)

[Select Icon for Application Tree](#)

[Browse](#)

Application Group

Application group for the new application

Required; Default: current application group

Application Name

Name for the application in the application tree

Max. Length: 32

Required

Interaction with Network Object Type

To put this application to the context menu of a network object

Selection list: "none", Network Management Server (BASE), ... Default: none

Required

If this checkbox is enabled, it forces the "Select Network Object" dialog to open, provided that at least 2 network objects of the given type have been defined.

Enabled, Disabled Default: disabled; If "Interaction with Network Object Type" is none this field is disabled

Web Application

Start Page Field Descriptions

Toggle field: Activate, when the application is a web application; deactivated, when "Windows Application" is enabled

URL

URL to start

It is possible to use place-holders. The place-holders are defined in the [Application Tree Area](#) section.

Max. Length: 256;

Required if "Web Application" is activated; Ignored if "Windows Application" is Enabled". Valid placeholders:

Windows Application

Toggle field: Activate, when the application is a windows application; deactivated, when "Web Application" is enabled

Executable

Name of the executable Max. Length: 256

Required if "Windows Application" is enabled

Parameters

Parameters for the executable

The user has to enter the required parameters for the application. It is possible to use place-holders. The place-holders are defined in the [Application Tree Area](#) section.

Max. Length: 256

Optional

Ignored if "Web Application" is enabled

Select Icon for Application Tree

This icon will be used in the application tree

Button: Browse through the local file system to get an icon.

Optional

Browse

To get the name (without path) of the required executable

Button

Required if "Windows Application" is enabled

Browse through the local file system to get the name of the required executable

Related Topics

[Start Page Main Help Topics](#)

[Multi Language Support](#)

[Menu Area](#)

Note "Applications which are opened via Java Web Start (JNLP) are automatically opened outside of browser and runs in separate window"

Context Menu: New

Context Menu: Delete

Context Menu: Modify Application

Context Menu: Rename

Modify Application

Application Tree Modifications

Application Tree Customizing

4.2 Modify Application

Interaction with Network Object Type

Required

URL

Executable

Parameters

Select Icon for Application Tree

Browse

Interaction with Network Object Type

To put this application to the context menu of a network object

Selection list: "none", Network Management Server (BASE), ...

Required

Forces the **Select a Network Object** dialog to open, if enabled.

Enabled, Disabled

To use an existing network object with its specific values, this field needs to be enabled in order to force the **Select a Network Object** dialog to open, showing all available network objects of the given type. If no placeholders "%i", "%n", "%u" are used in the **URL** or **Parameters** field, enabling the **Required** checkbox will have no impact upon the **Select a Network Object** dialog, i.e. the dialog will not open.

If only one network object has been defined, the **Select a Network Object** dialog will not open. If **Interaction with Network Object Type** is set to **None** this field is disabled.

Web Application

Toggle field: Activate, when the application is a web application; deactivated, when "Windows Application" is enabled

URL

URL to start

Start Page Field Descriptions

It is possible to use place-holders. The place-holders are defined in the [Application Tree Area](#)

Max. Length: 256

Required if "Web Application" is enabled

Ignored if "Windows Application" is enabled"

Windows Application

Toggle field: Activate, when the application is a windows application; deactivated, when "Web Application" is enabled

Executable

Name of the executable

Max. Length: 256

Required if "Windows Application" is enabled

Parameters

Parameters for the executable

The user has to enter the required parameters for the application. It is possible to use place-holders. The place-holders are defined in the [Application Tree Area](#).

Max. Length: 256

Optional

Ignored if "Web Browser" is enabled

Select Icon for Application Tree

This icon will be used in the application tree

Button

Optional

Browse through the local file system to get an icon. GIF and JPEG are the supported graphics file formats. The size of the images will automatically be resized to 16 x 16 pixels.

Browse

To get the name (without path) of the required executable

Button

Required if "Windows Application" is enabled

Browse through the local file system to get the name of the required executable

Related Topics

[Start Page Main Help Topics](#)

[Multi Language Support](#)

[Menu Area](#)

Note "Applications which are opened via Java Web Start (JNLP) are automatically opened outside of browser and runs in separate window"

[Context Menu: New](#)

[Context Menu: Delete](#)

[Context Menu: Modify Application](#)

[Context Menu: Rename](#)

[Modify Application](#)

[Application Tree Modifications](#)

[Application Tree Customizing](#)

4.3 Broadcast Message

[Message](#)

Message

Message to send

Max. Length: 60 (not "@#" as a string!)

Required

Related Topics

[Broadcast](#)

[Start Page Main Help Topics](#)

4.4 Select a Network Object

[Name](#)

[ID](#)

[Description](#)

[OK](#)

[Cancel](#)

[Reset](#)

Name

Text column; lists the names of all network objects of a certain type

Values: Text string

The names of the available network objects are displayed in this column. The **Select a Network Object** dialog is used both for retrieving and for selecting the proper network object for the chosen application. Each row in the table displayed in this dialog represents one network object. The properties displayed in the columns **Name**, **ID** and **Description** are defined in System Management.

Read-only column.

Start Page Field Descriptions

ID

Column displaying a four-digit mnemonic (e.g. 0001) that identifies the network object

Values: Four-digit integer

The IDs of the available network objects are displayed in this column. The **Select a Network Object** dialog is used both for retrieving and for selecting the proper network object for the chosen application. Each row in the table displayed in this dialog represents one network object. The properties displayed in the columns **Name**, **ID** and **Description** are defined in System Management.

Read-only column.

Description

This text column contains a short description for each of the displayed network objects.

Values: Text string

The **Select a Network Object** dialog is used both for retrieving and for selecting the proper network object for the chosen application. The properties displayed in the columns **Name**, **ID** and **Description** are defined in System Management.

Read-only column.

Name

Values: String

The name of the selected network object is displayed in this field

Read-only column.

OK

This button is used to confirm the selection of a selected network object

Cancel

Cancel is used to abort an operation, in this case the selection of a specific network object.

Reset

Resets text input to the previous, unsaved content.

Related Topics

[Start Page User Interface](#)

[Start Page Main Help Topics](#)

Index

A

- Access Management [4](#), [6](#), [11](#), [40](#)
- Access rights [4](#), [6](#)
 - Application tree [11](#)
 - Applications [14](#)
 - Configuration [40](#)
- Add Application [28](#)
- Application [5](#)
 - Access rights [14](#)
- Application Group [5](#), [15](#)
- Application Tree [14](#)
 - Access rights [14](#)
 - Application Groups [15](#)
 - Applications [15](#)
 - Context menu [32](#)
 - Customizing [40](#)
 - Folders [15](#)
 - Modifications [28](#)
 - Object names [32](#)
 - Visible applications [6](#), [14](#)
 - Visible entries [11](#)
- Authorization levels [39](#)

B

- Broadcast [18](#), [39](#)
- Broadcast Message [18](#), [39](#)
- Browser
 - Supported Browsers [4](#)

C

- Client Broadcast [40](#)
- Component information [13](#)
- Configuration Management information [13](#)
- Context menu
 - Application Tree [32](#)
 - Delete [23](#)
 - Delete Application [33](#)
 - Delete Application Group [35](#)
 - Delete Folder [34](#)
 - Empty area [33](#)
 - Modify Application [33](#)
 - New [22](#)
 - Rename [25](#)
- Customize [32](#)
 - Add application [40](#)
 - Application tree [40](#)
 - Application Tree [28](#)
 - Modify application [40](#)
 - Security level [39](#)

D

- Delete
 - Application [23](#)
 - Application Group [23](#)
 - context menu [23](#)
 - Folder [23](#)
- Direct Access [4](#), [6](#)
 - Assistant [7](#)
 - Assistant Remote Access [36](#)
 - ComWin Download [38](#)
 - ComWin Remote Access [36](#)
 - Dynamic Traffic Monitoring [37](#)
 - File Transfer [37](#)
 - Filtering and Sorting [38](#)
 - Hardware and Symptom Diagnosis [37](#)
 - Manager [6](#), [35](#)
 - Multi Selection of Switches [38](#)
 - Portal Remote Access [36](#)
 - Realtime Diagnosis [37](#)
- Dynamically added applications [32](#)

F

- Field descriptions [43](#)
- Field Help
 - Start Page [43](#)
- Folders [15](#)

H

- Help
 - icon [27](#)
 - topics [4](#)

I

- Icon
 - All folders closed [17](#)
 - All folders open [16](#)
 - Broadcast [18](#)
 - Help [27](#)
 - Logoff [27](#)
 - Preferences [18](#), [28](#)

J

- JNLP [19](#)

L

- License Management information [13](#)
- Licensed applications
 - overview [4](#)

Logoff [27](#)
Warning message [27](#)

M

Main Help topics [4](#)
Menu area
Icons [16](#)
Modify Application [25, 30](#)
Context menu [25](#)
Multi-language support [4, 9](#)

N

Network object [5](#)
Network Object Type [5](#)
New
Application [22, 22](#)
Application Group [22](#)
Context menu [22](#)
Folder [22](#)

O

Object names
Application Tree [32](#)
Order of entries
Application Tree [28](#)

P

Parameters for network objects
Place-holders [15, 28](#)
Preferences
icon [28](#)

R

Rename [33](#)
Application [25](#)
Application Group [25](#)
context menu [25](#)
Folder [25](#)
Restrictions [10](#)
User-defined names [10](#)

S

Security Considerations [39](#)
Security level
Customize [39](#)
Send broadcast message [39](#)
Select Network Object [15, 35](#)
Send broadcast message
Security level [39](#)
Single login [6](#)
SSO information (Manager only) [13](#)
Standard applications [32](#)

Start Page Field Help [43](#)
Start Page Help topics [4](#)
Start Page User Interface
Components [11](#)
Status Board information [13](#)
Step-by-step instructions [42](#)
System Management [4, 11](#)
System Management information (Manager only) [13](#)

T

Terms used in Start Page Online Help [5](#)
Application [5](#)
Application Group [5](#)
Network object [5](#)
Network object type [5](#)

U

user access rights [6](#)
User Info [12](#)
User Management [6](#)
User-added applications [32](#)

W

Warning message
Logoff [27](#)
Web application
add application [28, 43](#)
modify application [30, 45](#)
Windows application
add application [28, 44](#)
modify application [30, 46](#)

