

Mitel MiContact Center Enterprise

NUANCE SOFTWARE INSTALLATION GUIDE (ASR & TTS)

Release 9.5



NOTICE

The information contained in this document is believed to be accurate in all respects but is not warranted by Mitel Networks™ Corporation (MITEL®). The information is subject to change without notice and should not be construed in any way as a commitment by Mitel or any of its affiliates or subsidiaries. Mitel and its affiliates and subsidiaries assume no responsibility for any errors or omissions in this document. Revisions of this document or new editions of it may be issued to incorporate such changes.

No part of this document can be reproduced or transmitted in any form or by any means - electronic or mechanical - for any purpose without written permission from Mitel Networks Corporation.

TRADEMARKS

The trademarks, service marks, logos and graphics (collectively "Trademarks") appearing on Mitel's Internet sites or in its publications are registered and unregistered trademarks of Mitel Networks Corporation (MNC) or its subsidiaries (collectively "Mitel") or others. Use of the Trademarks is prohibited without the express consent from Mitel. Please contact our legal department at legal@mitel.com for additional information. For a list of the worldwide Mitel Networks Corporation registered trademarks, please refer to the website: <http://www.mitel.com/trademarks>.

Nuance Software Installation Guide
Release 9.5 – September 2020

®,™ Trademark of Mitel Networks Corporation
© Copyright 2020 Mitel Networks Corporation
All rights reserved

Introduction	1
Nuance SW download	1
ASR and TTS	5
Supported Languages	5
Deployment Scenarios	6
Single Server and Multiple Clients	6
Single Server and Single Client	6
Installation Preparation.....	6
Removing Previous Versions of Nuance Software.....	6
Installing Nuance Software.....	7
Prepare Server	7
Install Java JDK.....	7
Install Apache Tomcat	7
Database	7
Install SQL 2016	8
Install MySQL 5.7 and Connector/J.....	20
Install NSS 11.04	28
Finish up the installation	34

Introduction

This document describes the installation process for Nuance software that is used with Open Application Server (OAS) or Telephony Application Server (TAS).

In OAS and TAS, Automatic Speech Recognition (ASR) and Text-to-Speech (TTS) functionality is provided by:

- Nuance Speech Suite 11, which consists of:
 - Nuance License Manager
 - Nuance 11 (ASR)
 - Nuance Vocalizer for Network 7 (TTS)
 - Nuance Management Station

Nuance SW download

There are three packages of Nuance SW available for MiCC Enterprise at the SW download (SWDL) site on the MiAccess portal:

1. The base Nuance Speech Server (NSS) 11 package. This includes SW and Nuance documentation in order to install the NSS server and it also includes the US English ASR and TTS language files.
2. Nuance Recognizer package. This includes the Recognizer 10 languages for:
 - a. ar-WW_Arabic-WorldWide
 - b. ca-ES_Catalan-Spain
 - c. da-DK_Danish-Denmark
 - d. de-AT_German-Austria
 - e. de-CH_German-Switzerland
 - f. de-DE_German-Germany
 - g. en-AU_English-Australia
 - h. en-GB_English-United Kingdom
 - i. en-US_English-United States
 - j. es-ES_Spanish-Spain
 - k. eu-ES_Basque-Spain

- l. fi-FI_Finnish-Finland
- m. fr-BE_French-Belgium
- n. fr-CA_French-Canada
- o. fr-FR_French-France
- p. it-IT_Italian-Italy
- q. nl-BE_Dutch-Belgium
- r. nl-NL_Dutch-Netherlands
- s. no-NO_Norwegian-Norway
- t. pl-PL_Polish-Poland
- u. pt-BR_Portuguese_Brazil
- v. ru-RU_Russian-Russian Federation
- w. sv-SE_Swedish-Sweden

3. Nuance Vocalizer Packages. The following languages and voices are included:

- a. ar-WW_Arabic-WorldWide
 - i. Female voice Laila
 - ii. Male voice Tarik
- b. ca-ES_Catalan-Spain
 - i. Female voice Montserrat
 - ii. Male voice Jordi
- c. da-DK_Danish-Denmark
 - i. Female voice Sara
 - ii. Male voice Magnus
- d. de-DE_German-Germany
 - i. Female voice Petra

-
- ii. Male voice Markus
 - e. en-AU_English-Australia
 - i. Female voice Karen
 - ii. Male voice Lee
 - f. en-GB_English-British-English
 - i. Female voice Stephanie
 - ii. Male voice Oliver
 - g. en-US_English-United States (also included in NSS SW package)
 - i. Female voice Zoe
 - ii. Male voice Nathan
 - h. es-ES_Spanish-Spain
 - i. Female voice Monica
 - ii. Male voice Jorge
 - i. eu-ES_Basque-Spain
 - i. Female voice Miren
 - j. fi-FI_Finnish-Finland
 - i. Female voice Satu
 - ii. Male voice Onni
 - k. fr-FR_French-France
 - i. Female voice Aurelie
 - ii. Male voice Thomas
 - l. it-IT_Italian-Italy
 - i. Female voice Paola
 - ii. Male voice Luca

- m. nl-BE_Dutch-Belgium
 - i. Female voice Ellen
- n. nl-NL_Dutch-Netherlands
 - i. Female voice Claire
 - ii. Male voice Xander
- o. no-NO_Norwegian-Norway
 - i. Female voice Nora
 - ii. Male voice Henrik
- p. pl-PL_Polish-Poland
 - i. Female voice Zosia
 - ii. Male voice Krysztof
- q. pt-BR_Portuguese_Brazil
 - i. Female voice Luciana
 - ii. Male voice Felipe
- r. ru-RU_Russian-Russian Federation
 - i. Female voice Milena
 - ii. Male voice Yuri
- s. sv-SE_Swedish-Sweden
 - i. Female voice Alva and Klara
 - ii. Male voice Oskar

If another language or TTS voice is needed, then contact Mitel Support to have it downloaded from the Nuance partner portal. For a complete list of languages and TTS voices use the links provided in the section SUPPORTED LANGUAGES below.

ASR and TTS

ASR and TTS software can be installed on multiple servers for load sharing and balancing purposes.

NOTE: According to the Nuance Installation Guide, the following must be considered: *“The Speech Suite installer includes one language and one text-to-speech voice. Optionally, you can enable a multilingual system that supports applications in different languages by downloading, installing, and configuring additional languages and voices to a **separate**, dedicated host.”*

To install an ASR and a TTS language on a single server during the NSS installation copy the extracted language installation packages under the install_language folder in the setup_files folder prior to running the NSS installer. By default the US English ASR and TTS packages are located there.

Supported Languages

Nuance Recognizer ASR Languages

Nuance Recognizer features 86 languages and dialects around the world for your Automatic Speech Recognition (ASR) self-service systems. The list included many dialects of English, Spanish, French, German and others like Swedish, Arabic Danish, Finnish and Norwegian. A complete list of these can be found [here](#).

Nuance Vocalizer 7 TTS Languages

The standard library offers 53 languages/dialects and 120 voices, 20 of which are multi-lingual. A complete list of these can be found [here](#).

Deployment Scenarios

It is recommended to install Nuance Speech Server on a separate server as it consumes a lot of CPU usage and memory. The following to deployments can be used:

Single Server and Multiple Clients

In this deployment, only one Nuance Speech Server is installed, and multiple clients (IPMS inside OAS server and standalone IPMS servers or TAS server(s)) connect to it for sending ASR and TTS requests.

Single Server and Single Client

In this deployment, only one Nuance Speech Server is installed, and only one client (IPMS inside OAS, standalone IPMS server or single TAS server) connects to it for sending ASR and TTS requests.

Installation Preparation

Before installing the Nuance software, make sure the following is true:

- You have local administrator privileges.
- You have access to the Nuance installation SW.
- There is no previously installed Nuance software on the server

If a previous version of the software exists, it has to be un-installed first.

Removing Previous Versions of Nuance Software

Any existing installation of the following software needs to be removed:

- Nuance 8.5 or 9.0
- Nuance Additional ASR Languages
- Nuance Vocalizer
- ScanSoft RealSpeak (only present if Nuance 8.5 was installed)
- TTS Language Voices

To check if previous versions of the software exist, do the following:

1. Go to Start > Settings > Control Panel, and then click Add/Remove Programs.
2. If any of the programs listed above appears in the list of programs, a previous version of that software is installed.

To uninstall previous versions of Nuance software, do the following:

1. Close all applications.
2. Shut down OAS by double-clicking the `OASShutDown.exe` application located in the `Mitel\OAS\Bin` folder, or shutdown the TAS server(s) if your system is TAS based

-
3. From the Start Menu, select Settings > Control Panel > Services.
 4. When the Services applet opens, select the **Nuance Watcher Daemon** service and click the **Stop** button on the tool bar.
 5. On the Start menu, select Settings > Control Panel. > Add/Remove Programs.
 6. The Control Panel screen appears.
 7. Click the software to remove (for example Nuance v8.5).
 8. Click **Change/Remove** to remove the previous version of software.
 9. Click **Yes** to confirm.
 10. The system removes the software.
 11. Repeat steps 6 to 8 for each software package with older version.
 12. Restart the system.

Installing Nuance Software

NOTE: Carefully follow the instructions in the *Nuance_Speech_Suite-11.0.4-Installation_Guide.pdf* guide that is included together with the NSS installation package. Also carefully note the supported versions of the 3rd party components as stated in the *NSS 11.04 Release Notes.html* document.

Prepare Server

Firewall should be turned off.
Ensure that 8.3 file naming is enabled if installing on other than boot drive (C:).
Install VC++ 2015 by running *vc_redist.x64.exe* in the VC++ 2015 folder.

Extract the downloaded file 'Nuance 11.04 setup files.zip' to a temp folder.

Install Java JDK

Run *zulu8.40.0.25-ca-jdk8.0.222-win_x64.msi* located in the '3rd party files' folder. Accept all Defaults.

Install Apache Tomcat

Extract the content of *apache-tomcat-9.0.22-windows-x64.zip* located in the '3rd party files' folder to e.g. C:\
Remember this location for later NSS installation..

Database

If using SQL Server continue here. If using MySQL then continue at section '[Install MySQL 5.7 and Connector/J](#)' further down in the document.

Install SQL 2016

SQL Server 2016 Setup

Feature Selection

Select the Standard features to install.

Install Rules

Feature Selection

Feature Rules

Instance Configuration

Server Configuration

Database Engine Configuration

Feature Configuration Rules

Ready to Install

Installation Progress

Complete

Features:

Instance Features

- Database Engine Services
- SQL Server Replication
- R Services (In-Database)
- Full-Text and Semantic Extractions for Sea
- Data Quality Services
- PolyBase Query Service for External Data
- Analysis Services
- Reporting Services - Native

Shared Features

- Reporting Services - SharePoint
- Reporting Services Add-in for SharePoint Proc
- Data Quality Client

Select All Unselect All

Instance root directory: C:\Program Files\Microsoft SQL Server\

Shared feature directory: C:\Program Files\Microsoft SQL Server\

Shared feature directory (x86): C:\Program Files (x86)\Microsoft SQL Server\

Feature description:

The configuration and operation of each instance feature of a SQL Server instance is isolated from other SQL Server instances. SQL Server instances can operate side-by-side on

Prerequisites for selected features:

Already installed:

- Windows PowerShell 3.0 or higher
- Microsoft Visual Studio 2010 Redistributable

Disk Space Requirements

Drive C: 1369 MB required, 68696 MB available

< Back Next > Cancel

SQL Server 2016 Setup

Feature Selection

Select the Standard features to install.

Install Rules

Feature Selection

Feature Rules

Instance Configuration

Server Configuration

Database Engine Configuration

Feature Configuration Rules

Ready to Install

Installation Progress

Complete

Features:

- Reporting Services - SharePoint
- Reporting Services Add-in for SharePoint Proc
- Data Quality Client
- Client Tools Connectivity
- Integration Services
- Client Tools Backwards Compatibility
- Client Tools SDK
- Documentation Components
- Distributed Replay Controller
- Distributed Replay Client
- SQL Client Connectivity SDK

Redistributable Features

Select All Unselect All

Instance root directory: C:\Program Files\Microsoft SQL Server\

Shared feature directory: C:\Program Files\Microsoft SQL Server\

Shared feature directory (x86): C:\Program Files (x86)\Microsoft SQL Server\

Feature description:

The configuration and operation of each instance feature of a SQL Server instance is isolated from other SQL Server instances. SQL Server instances can operate side-by-side on

Prerequisites for selected features:

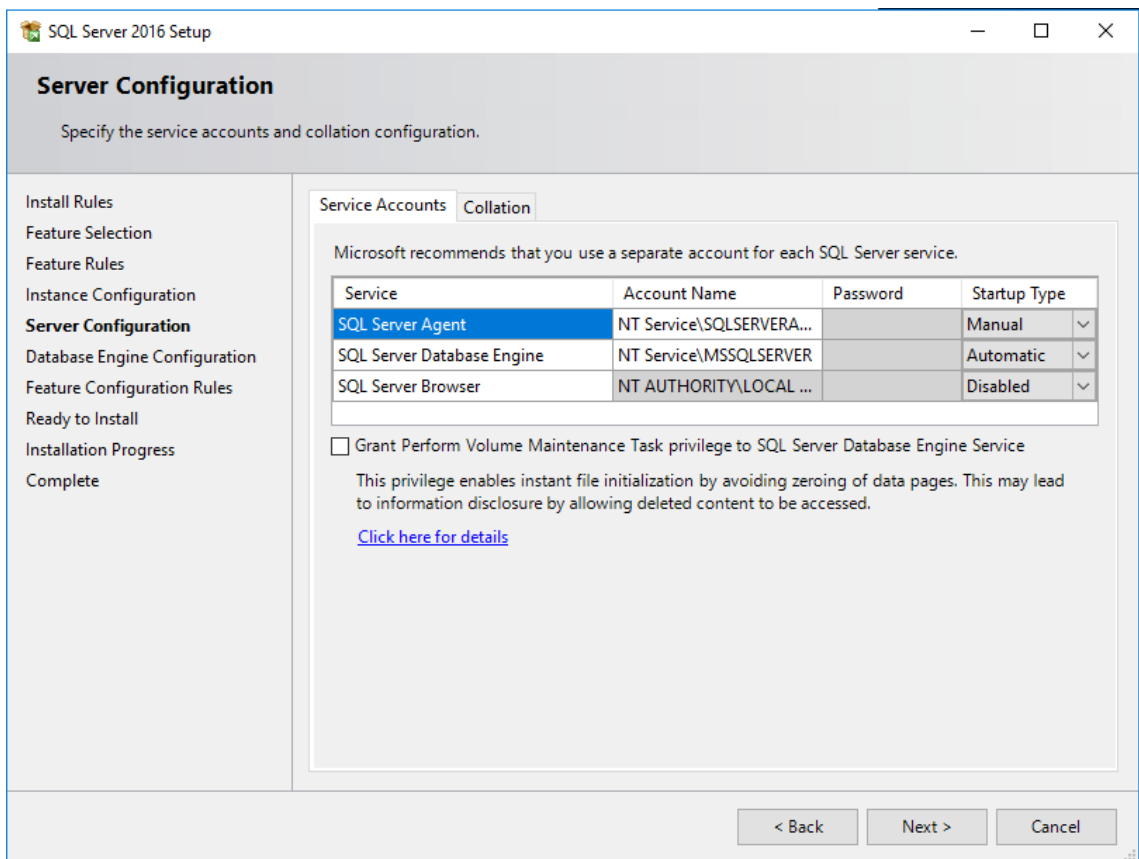
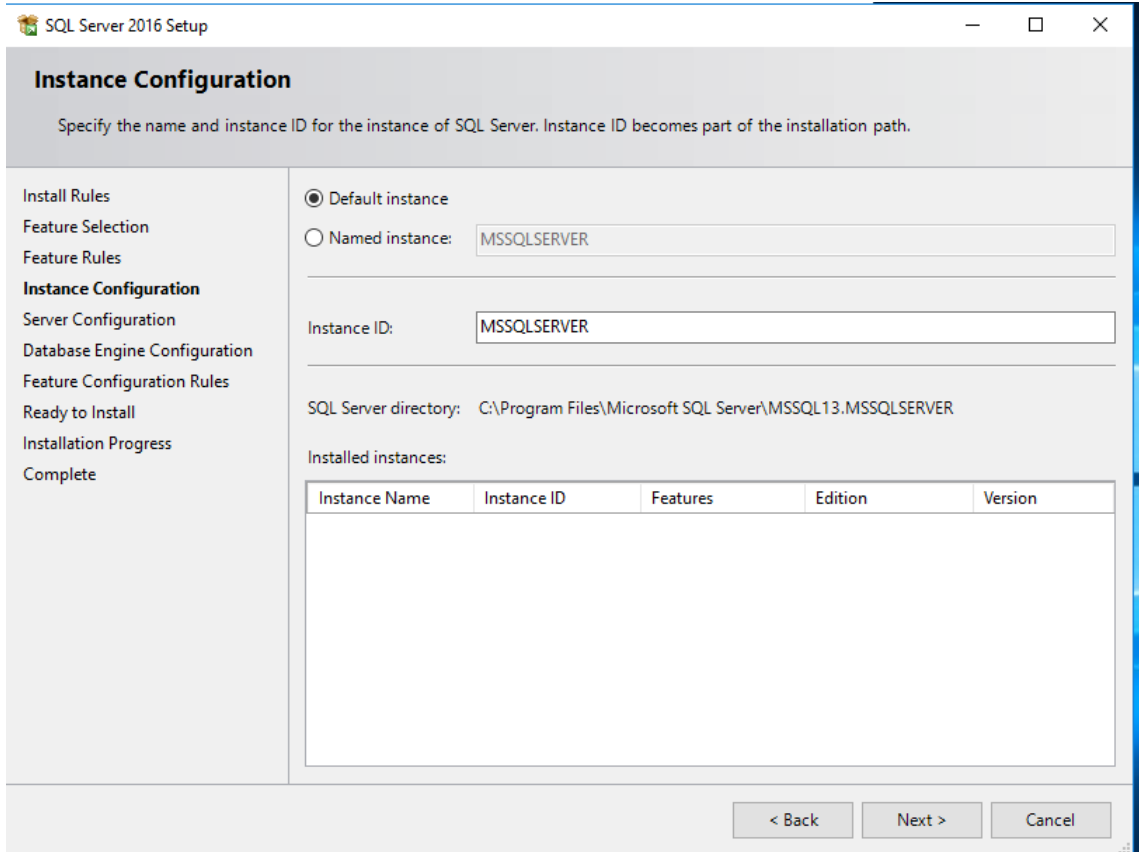
Already installed:

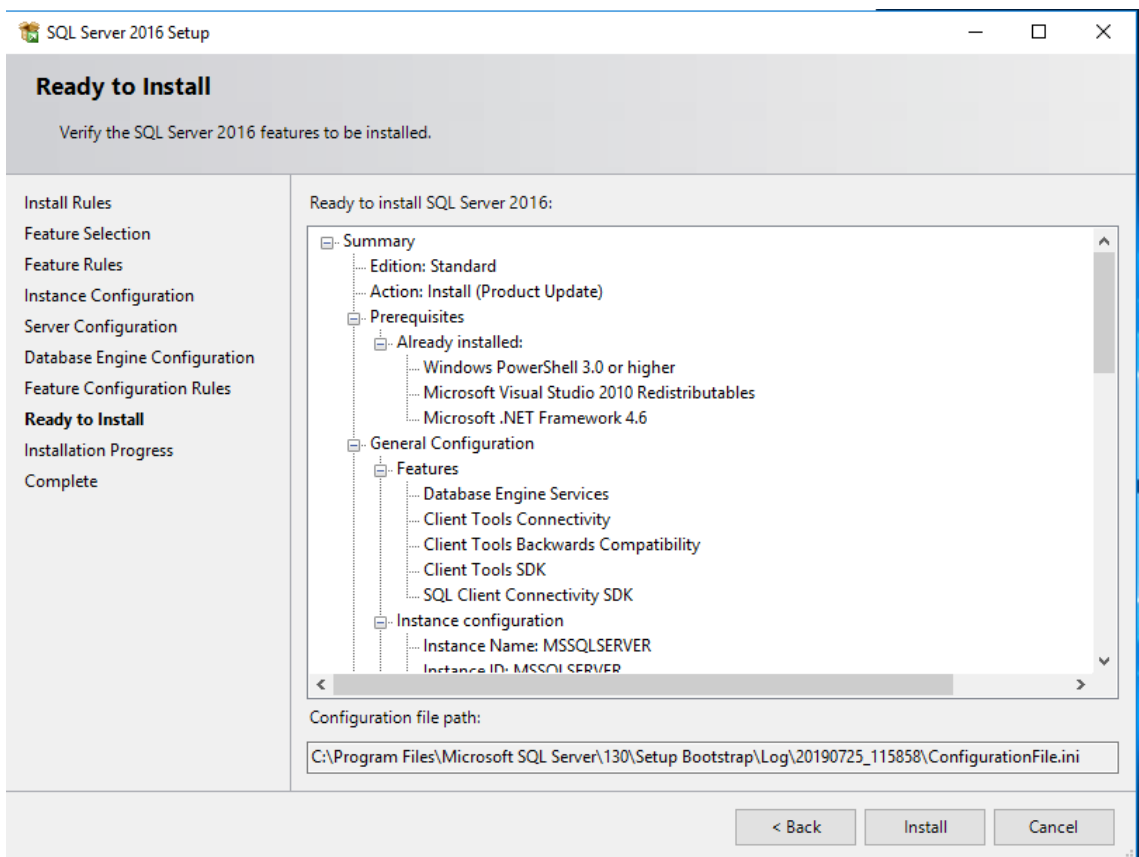
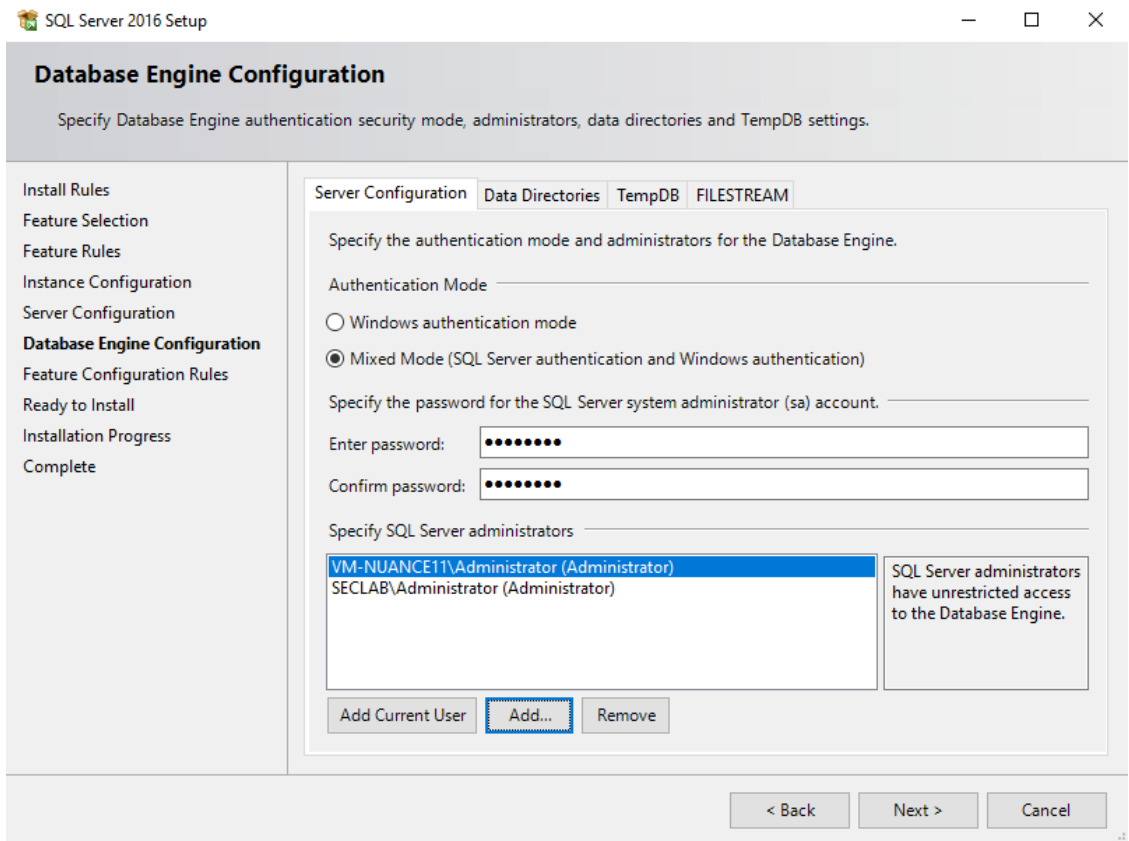
- Windows PowerShell 3.0 or higher
- Microsoft Visual Studio 2010 Redistributable

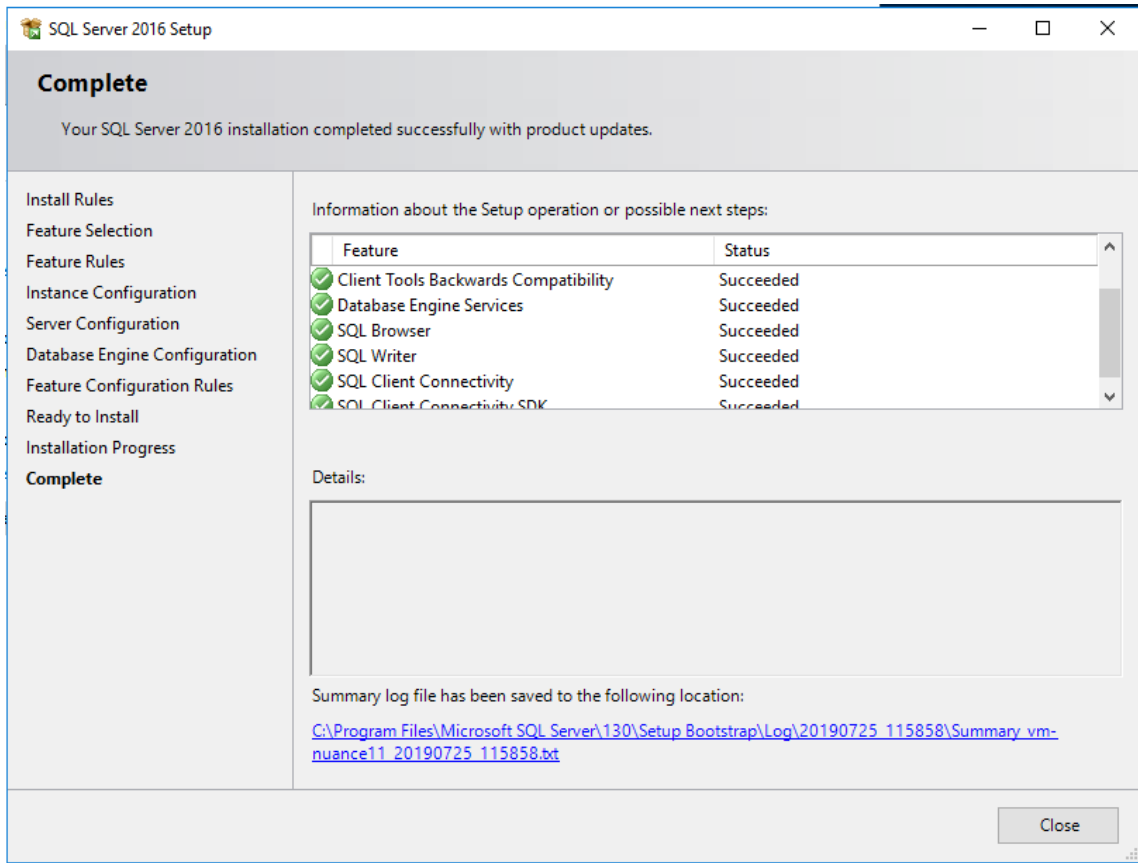
Disk Space Requirements

Drive C: 1369 MB required, 130511 MB available

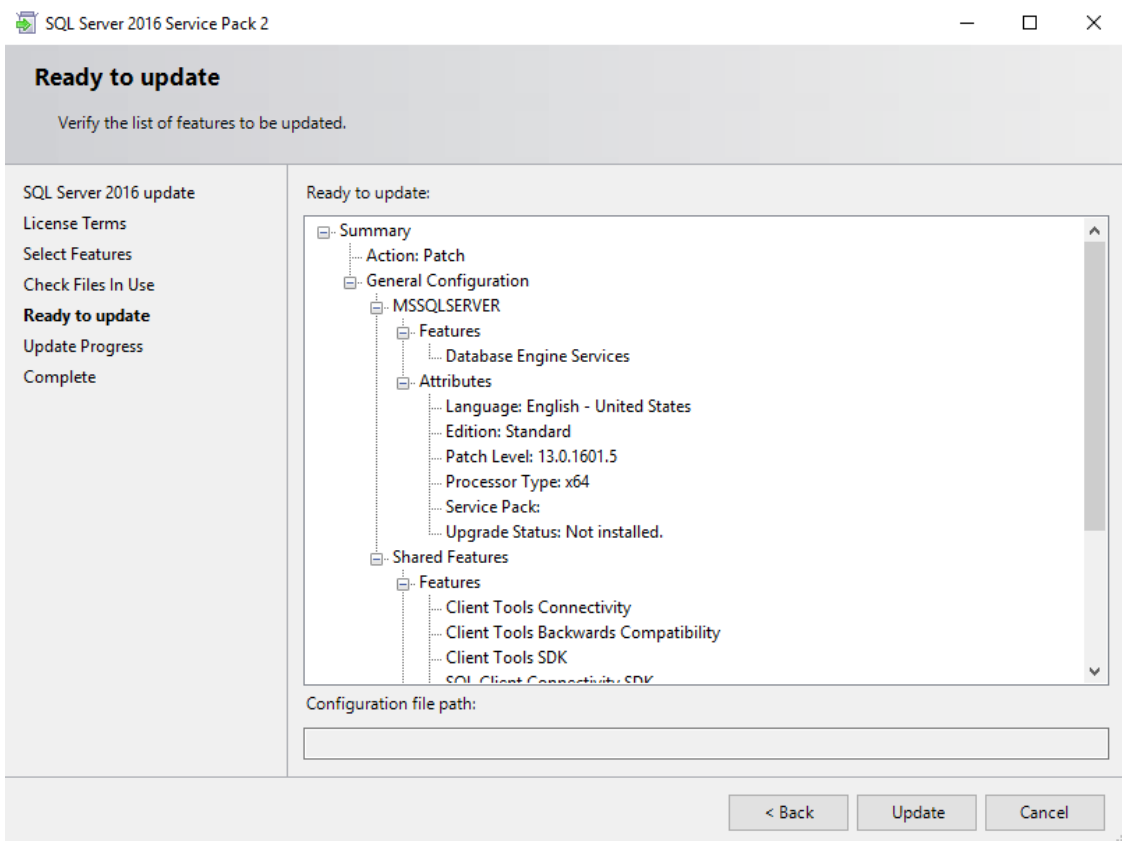
< Back Next > Cancel



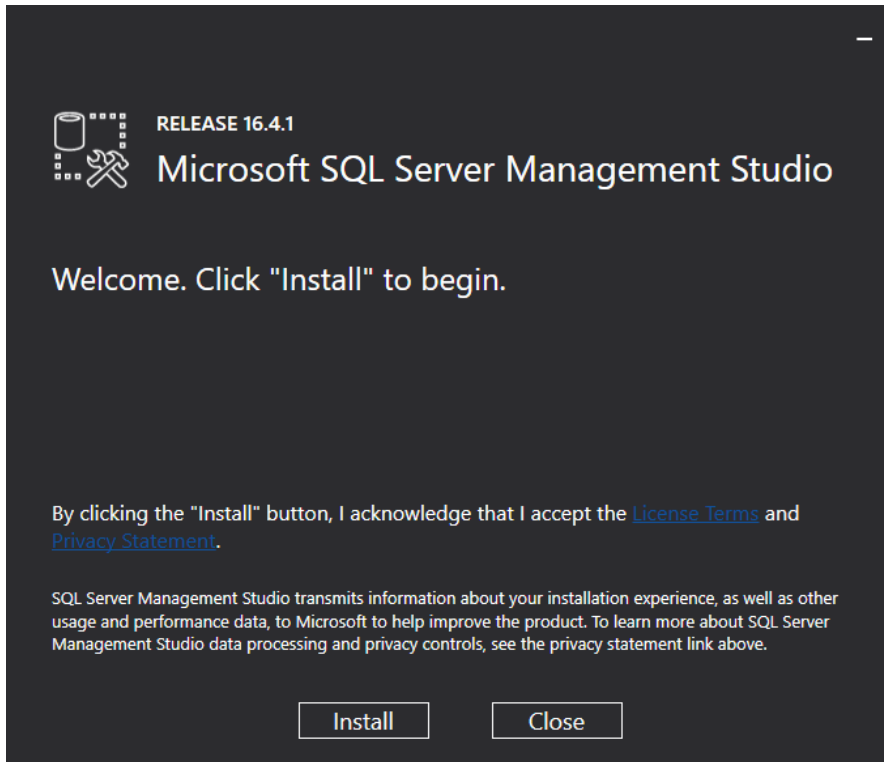




Install latest SQL Server 16 Service Pack (SP2).

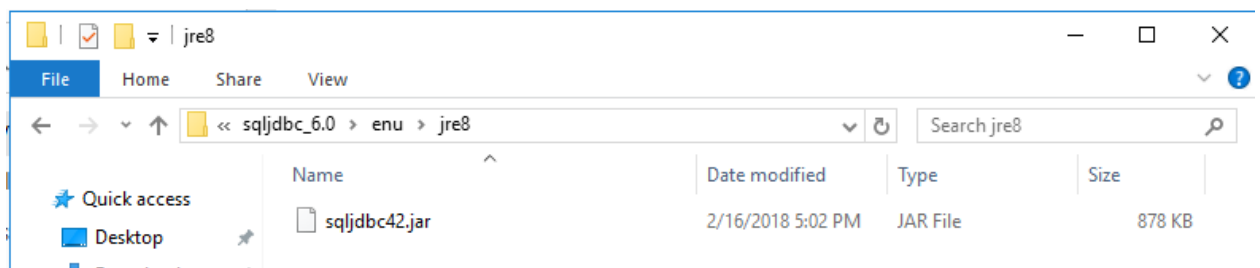


Install SQL Management Studio.
(SSMS-Setup-ENU.exe)



Install Connector/J

Run *sqljdbc_6.0.8112.200_enu.exe* located in the *3rd party files\SQL Server Connectors* folder.

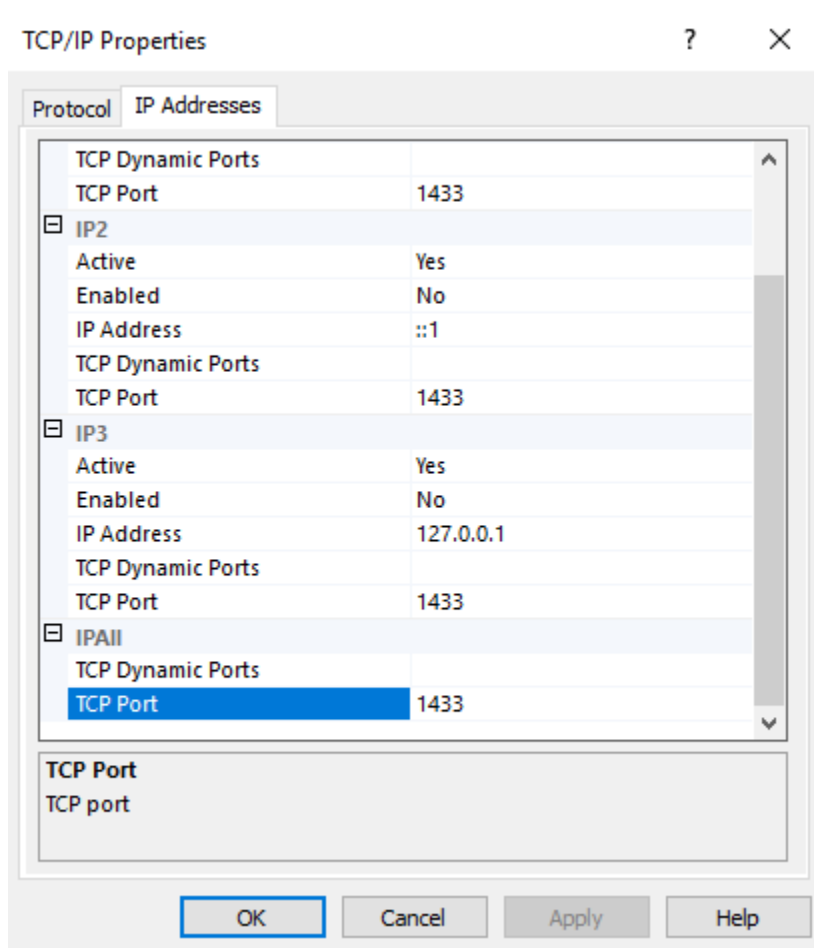
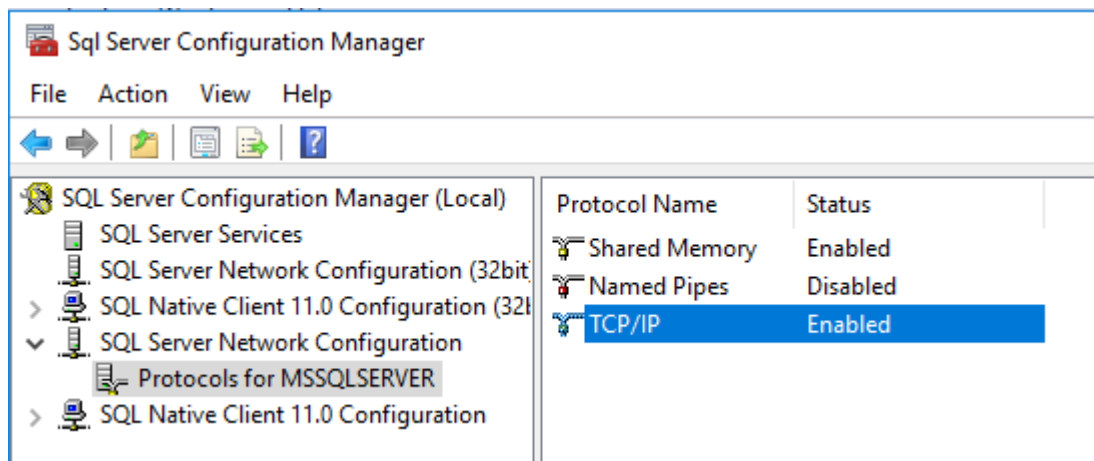


Copy sqljdbc42.jar to e.g. *c:\sqljdc_6.0*
Remember file location for later NSS installation.

Verify that *msodbcsql13.dll* is present in the *C:\Windows\System32* folder. If not run the ODBC 13 installation by executing *msodbcsql.msi* located in the *3rd party files\SQL Server Connectors\ODBC 13* folder

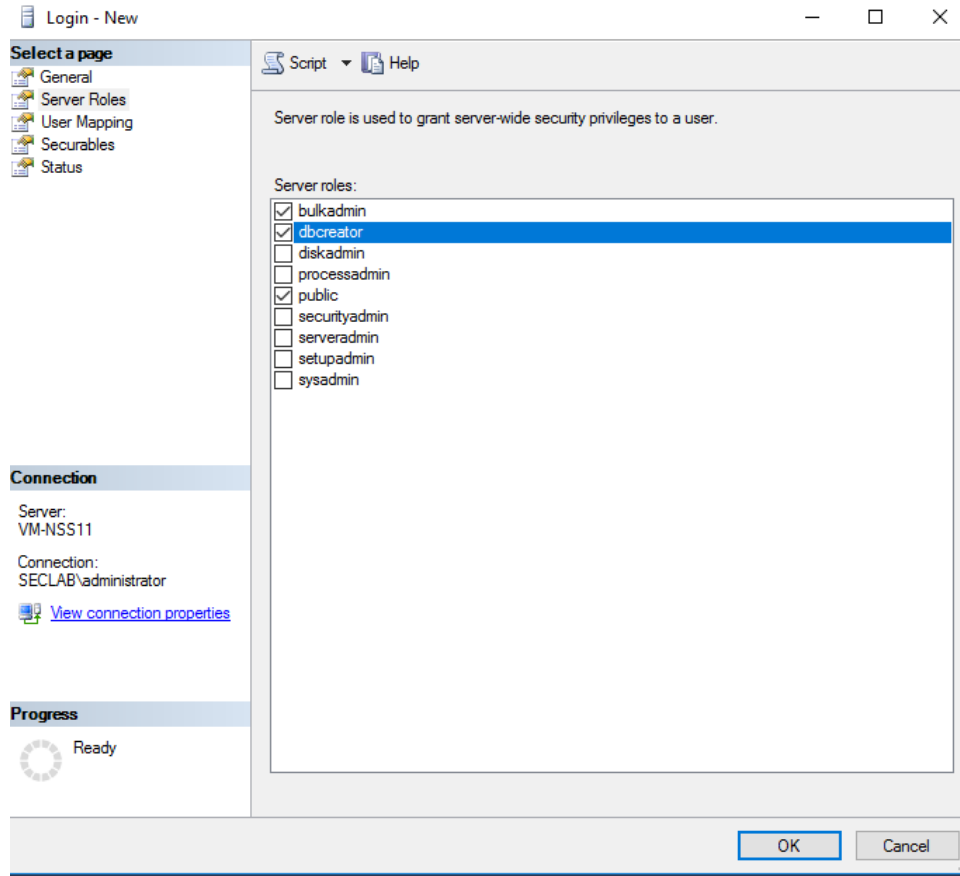
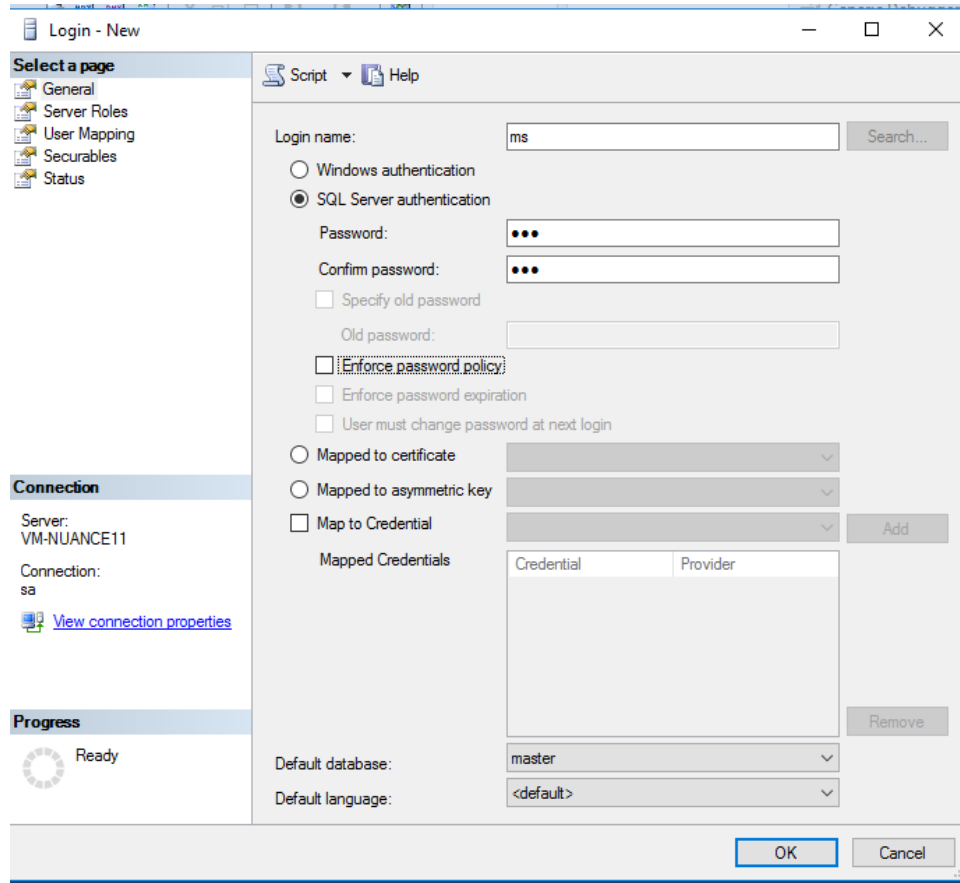
<Reboot the server>

Ensure TCP/IP is enabled in SQL Server:



Create SQL user

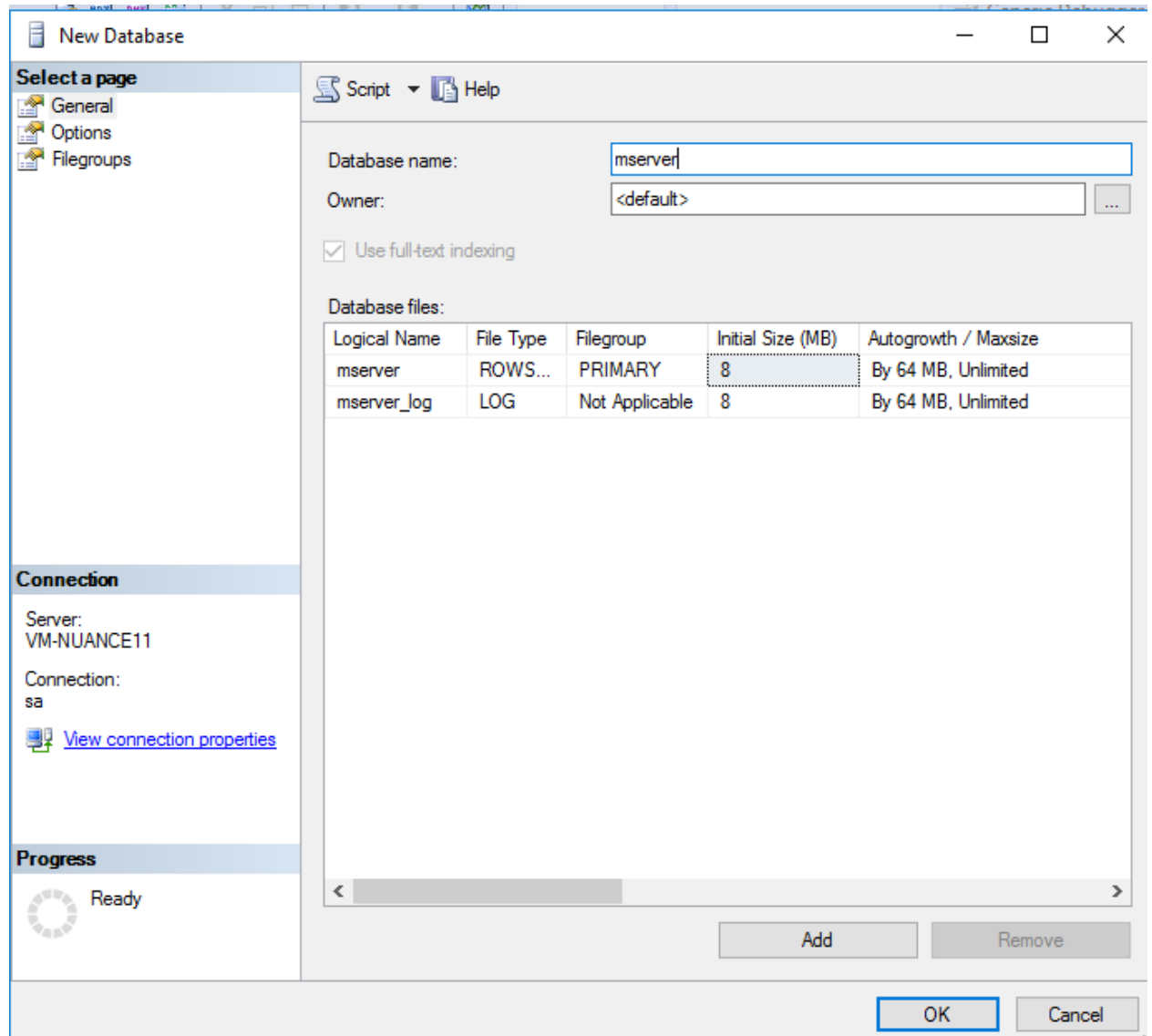
Run the SQL Management studio and create the user *ms* with password *mzp*:



Note: The bulkadmin role must be added as well (documentation error in the Nuance installation guide).

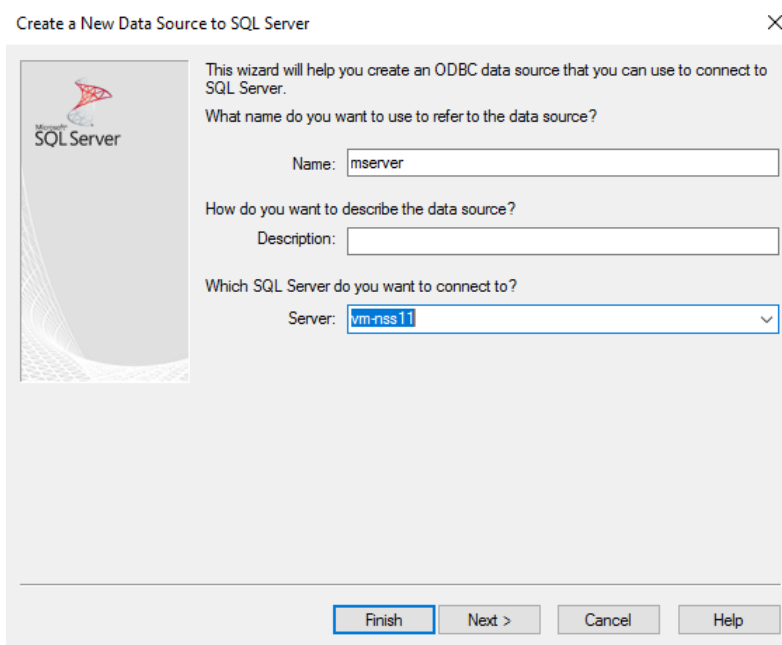
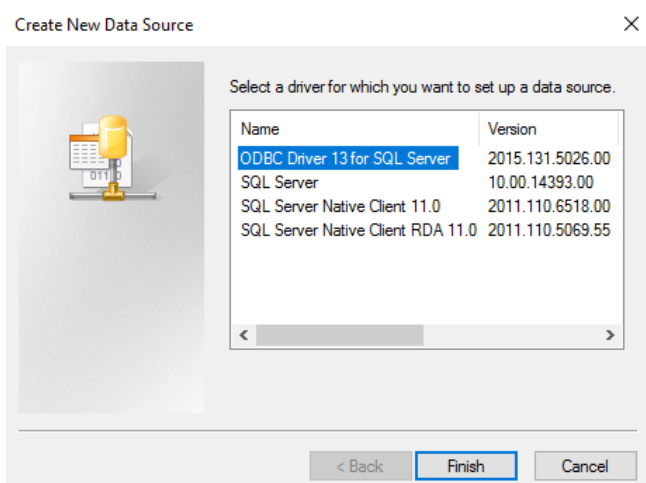
Create the mserver database

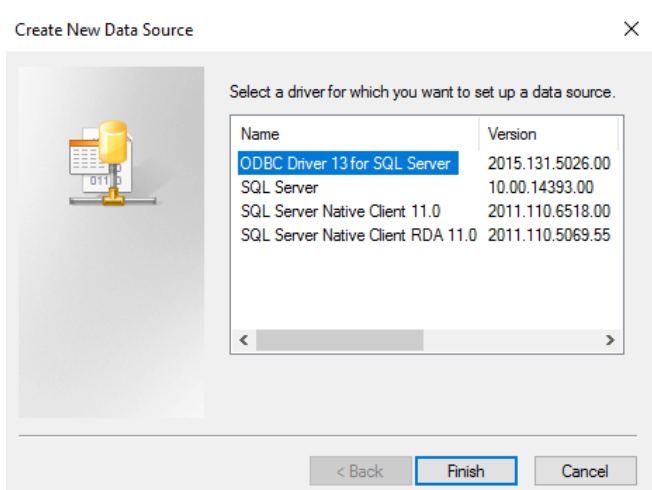
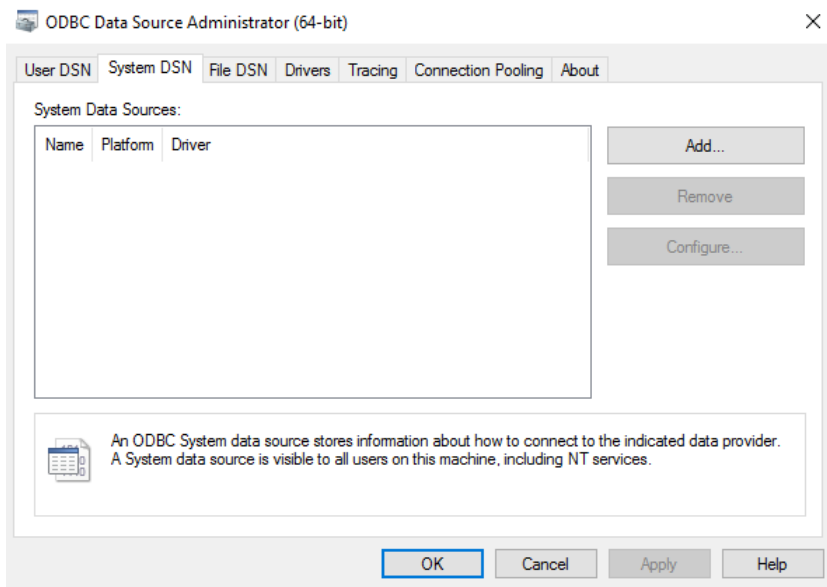
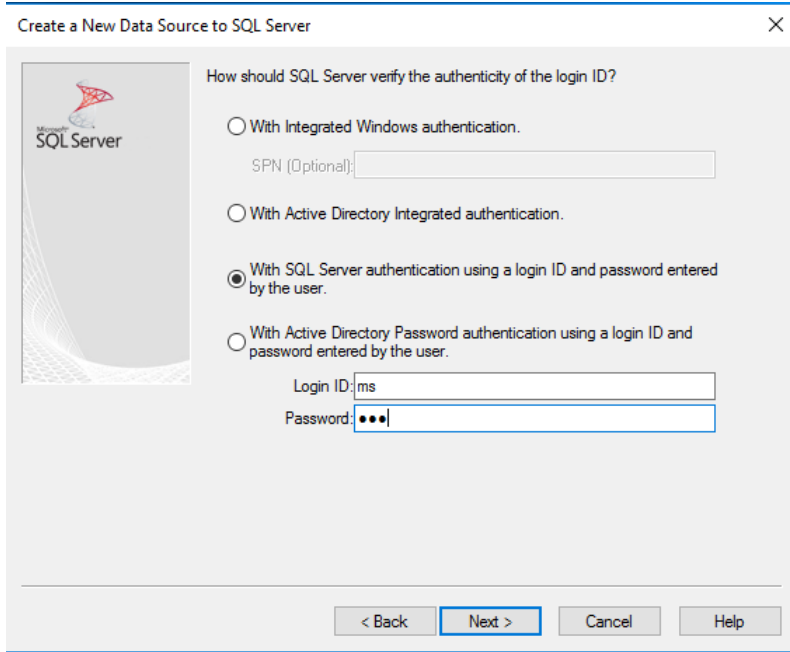
Using SQL Server Management studio, create a new database called *mserver*:




Create tables

Open a Command windows (run as Administrator) in the *NSSNuance_Speech_Suite-11.0.4\external_db_scripts* folder and run the sql script *create-tables-sqlserver.sql* by issuing command: `sqlcmd -U ms -P msp -d mserver -I create-tables-sqlserver.sql`





Create a New Data Source to SQL Server ×



This wizard will help you create an ODBC data source that you can use to connect to SQL Server.

What name do you want to use to refer to the data source?

Name:


How do you want to describe the data source?

Description:

Which SQL Server do you want to connect to?

Server:

Create a New Data Source to SQL Server ×



How should SQL Server verify the authenticity of the login ID?

With Integrated Windows authentication.
SPN (Optional):

With Active Directory Integrated authentication.

With SQL Server authentication using a login ID and password entered by the user.

With Active Directory Password authentication using a login ID and password entered by the user.

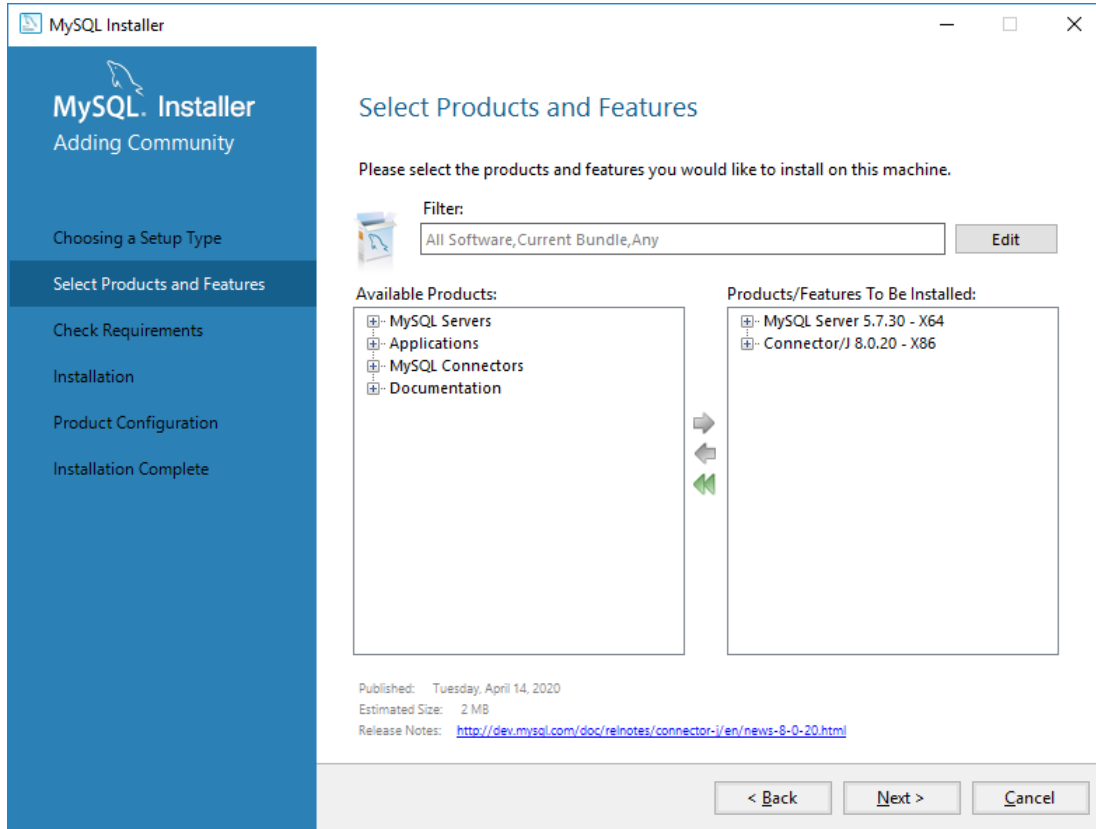
Login ID:

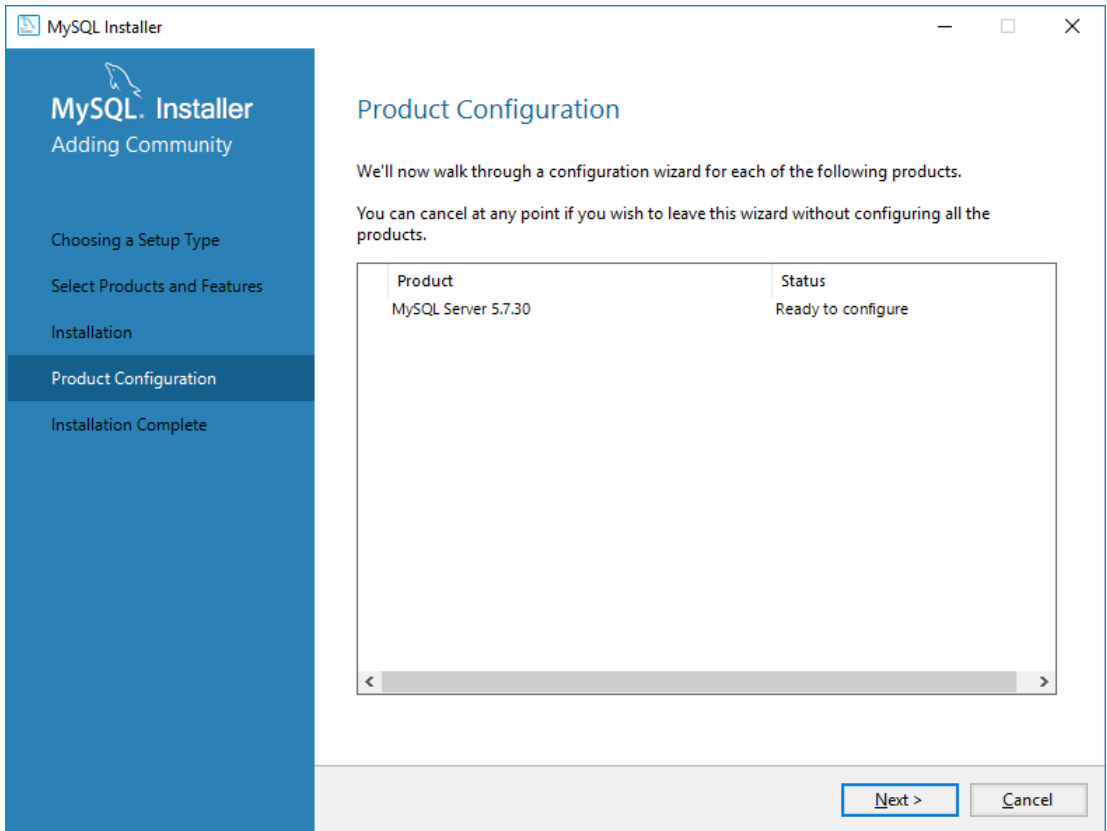
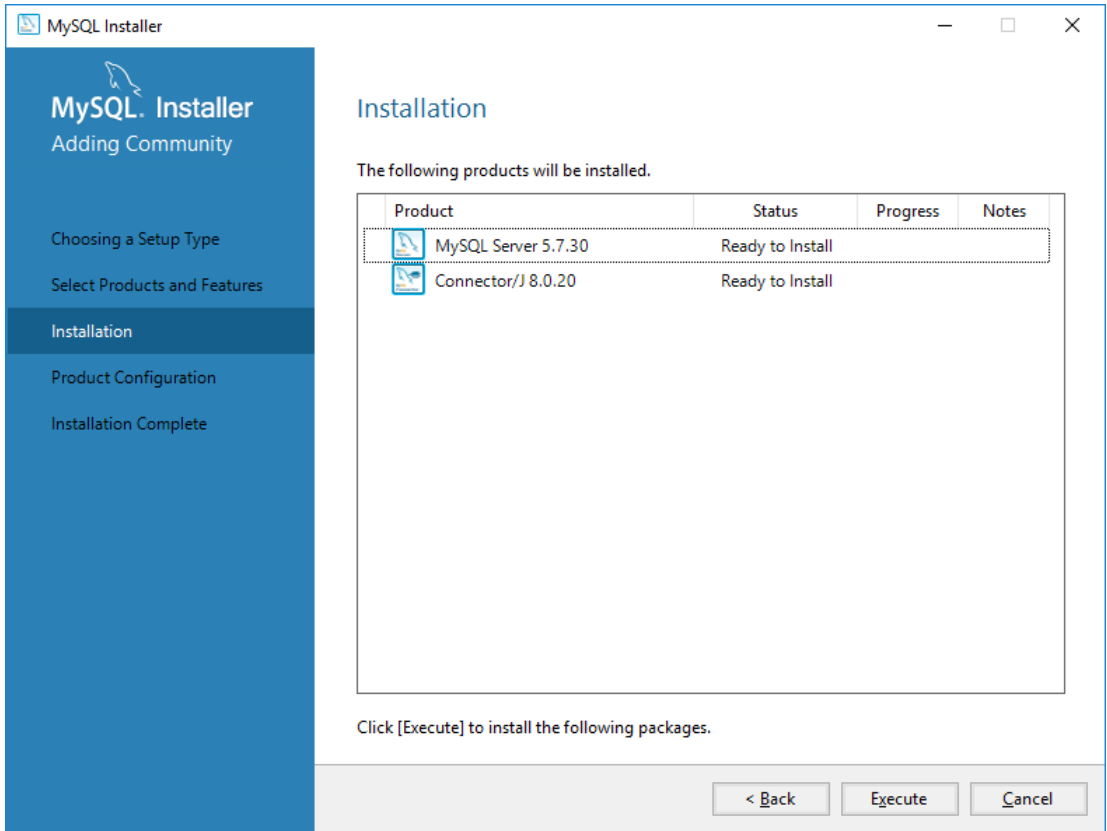
Password:

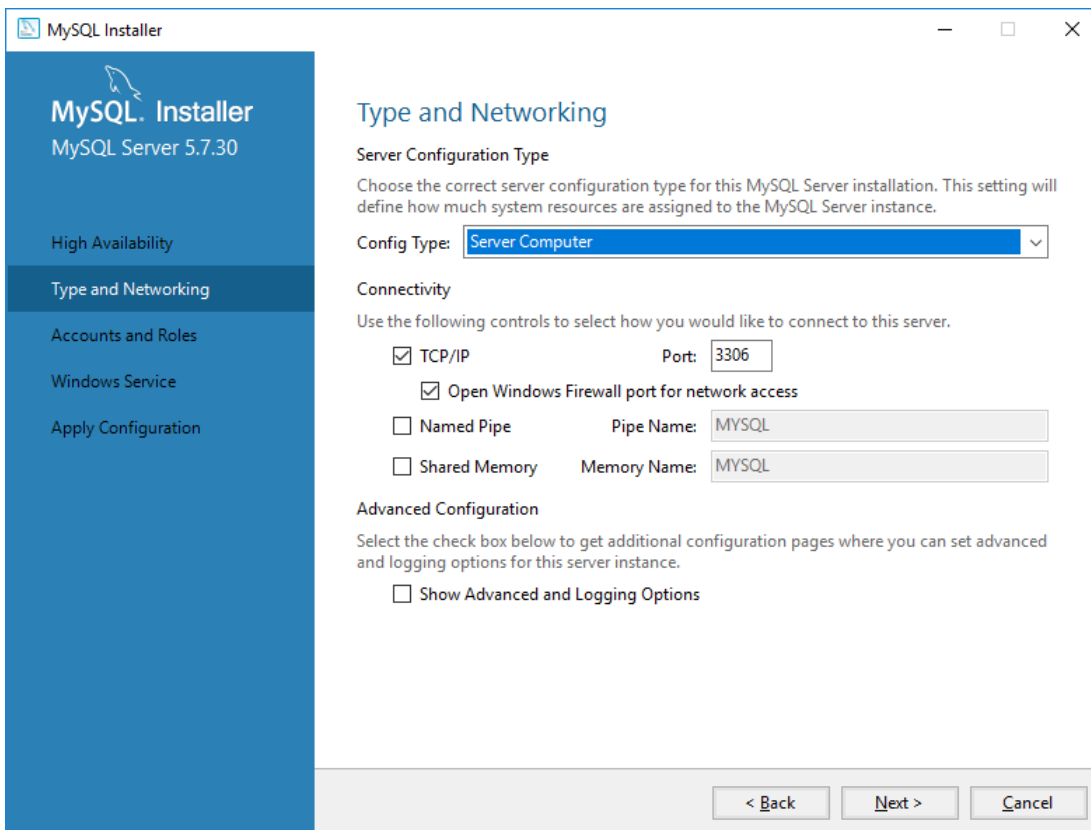
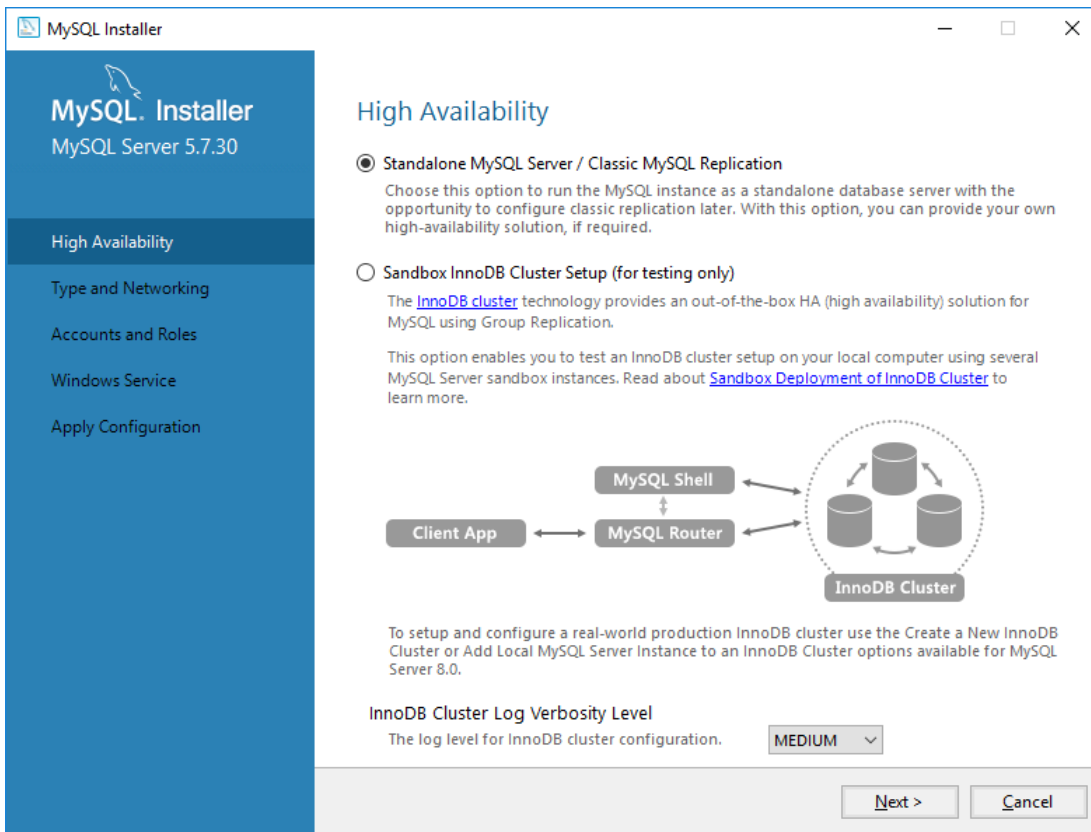
Continue at '[Install NSS 11.04](#)' below.

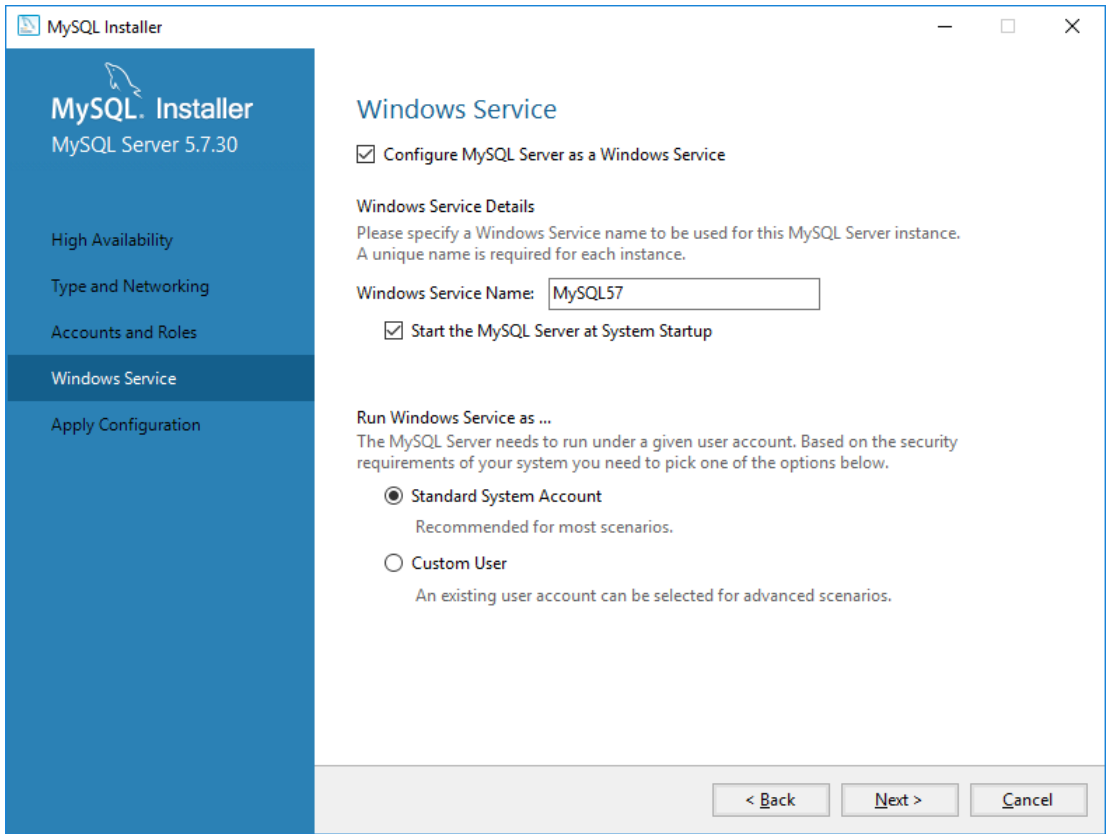
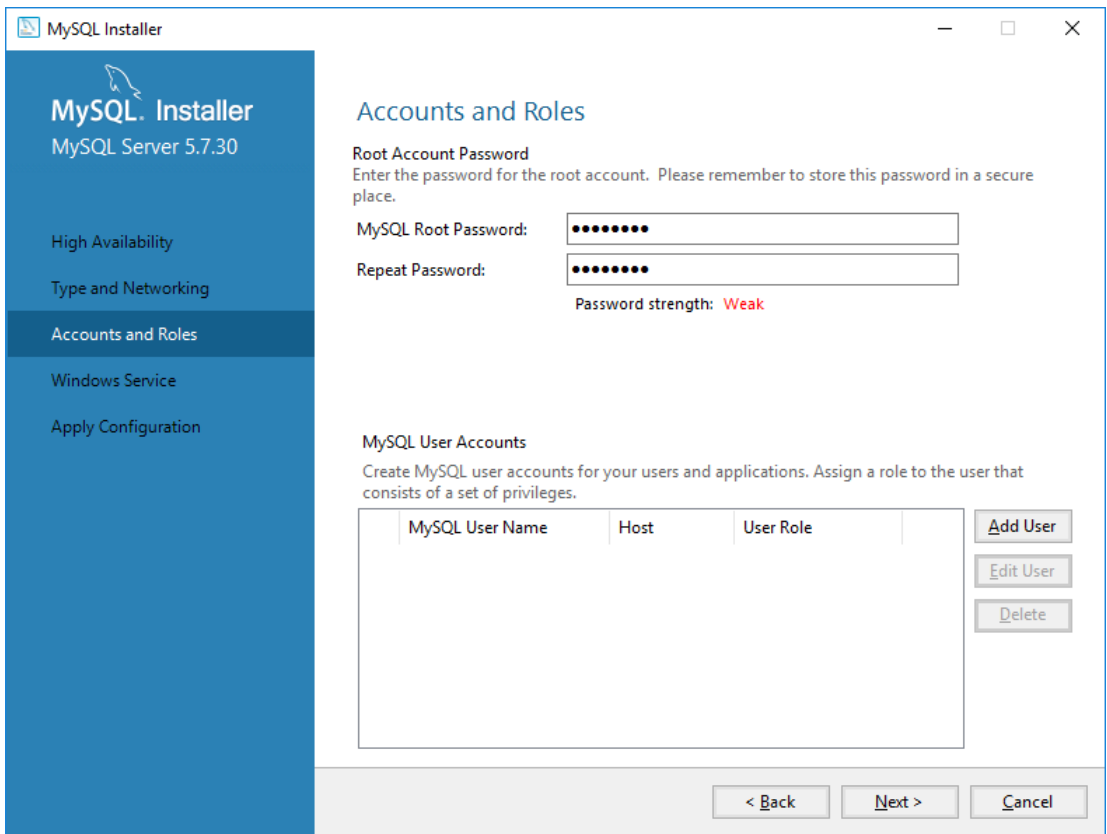
Install MySQL 5.7 and Connector/J

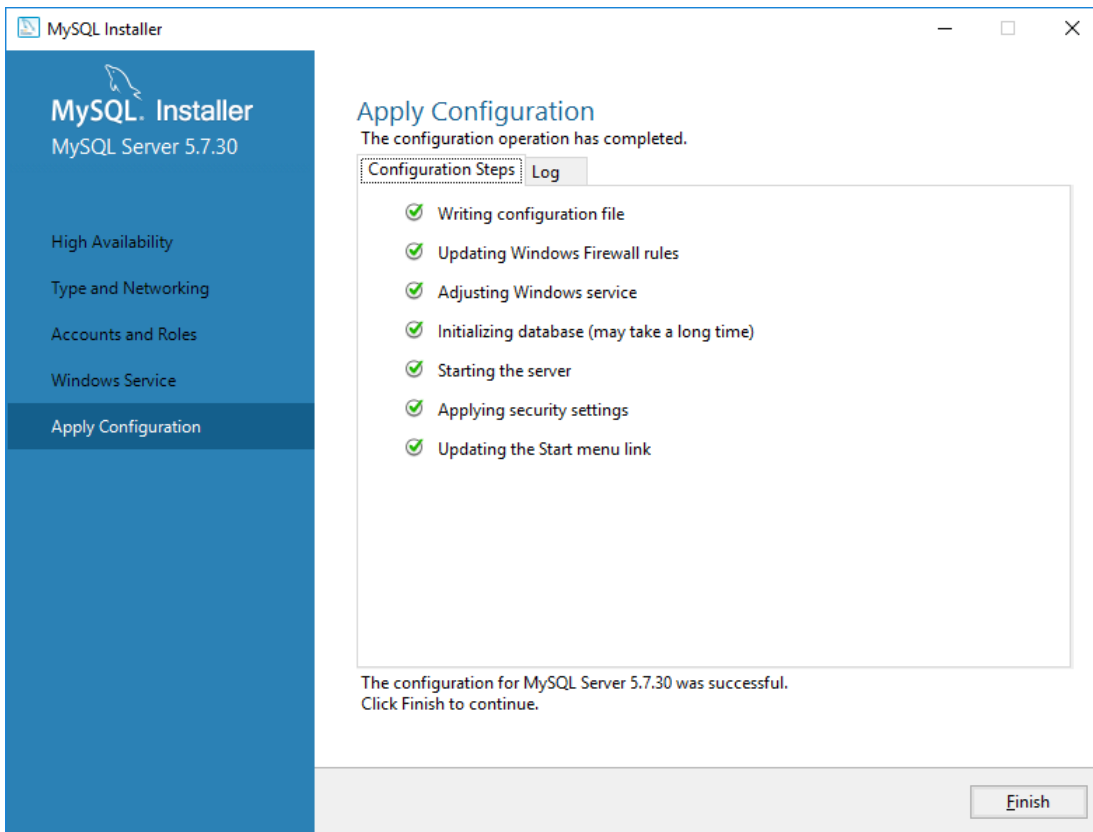
Run *mysql-installer-community-5.7.30.0.msi* located in the *3rd party files\MySQL* folder and select Custom and then select these items:
(Note that Connector/C will be installed by selecting MySQL Server)





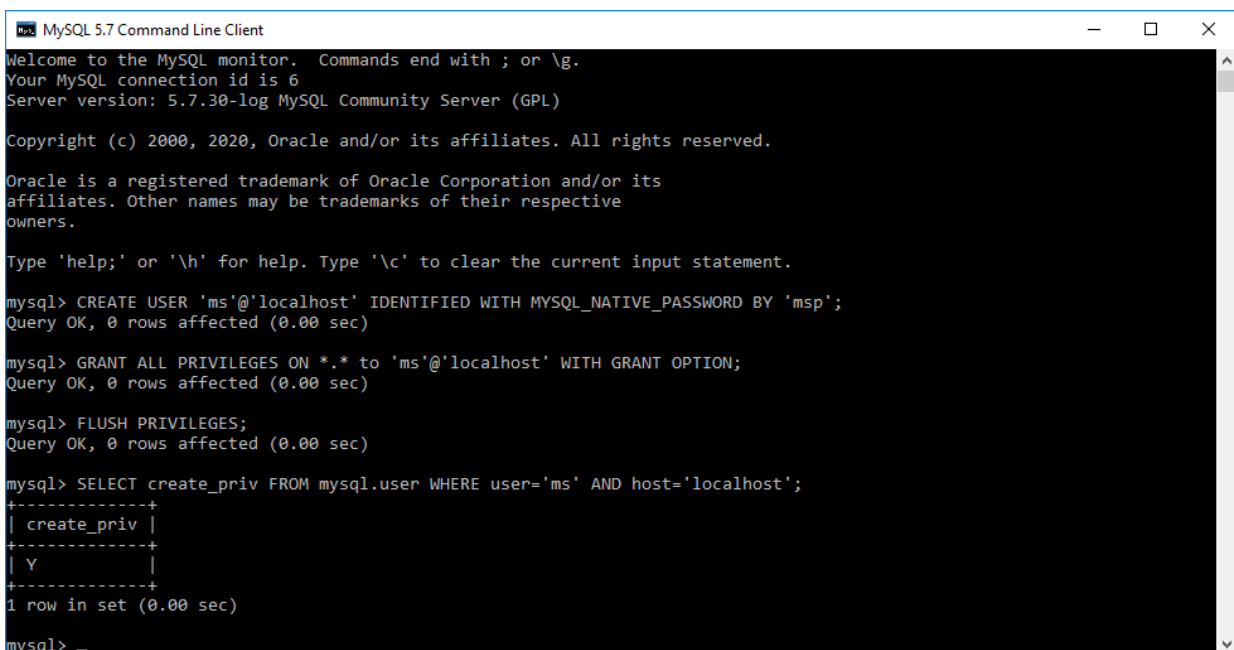






Create user 'ms' using the MySQL Client. Issue commands:

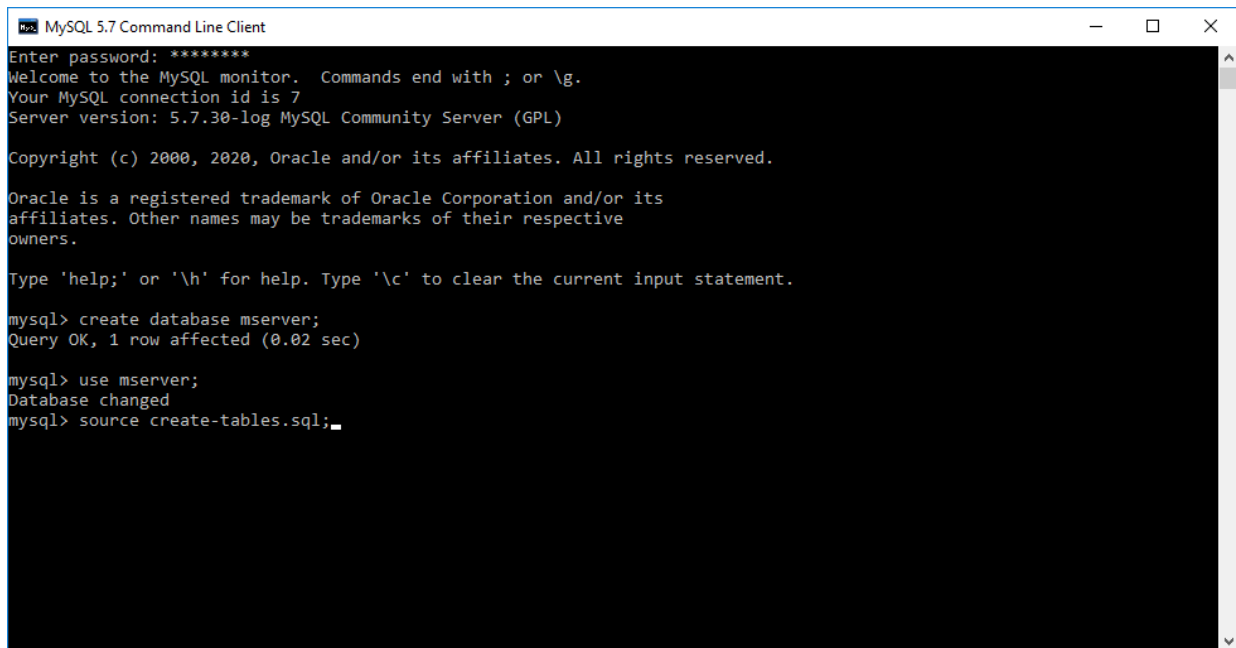
```
mysql> CREATE USER 'ms'@'localhost' IDENTIFIED WITH MYSQL_NATIVE_PASSWORD BY 'msp';
mysql > GRANT ALL PRIVILEGES ON *.* to 'ms'@'localhost' WITH GRANT OPTION;
mysql > FLUSH PRIVILEGES;
mysql > SELECT create_priv FROM mysql.user WHERE user='ms' AND host='localhost';
```



Create database mserver and its tables: Copy create-tables.sql to C:\Program Files\MySQL\MySQL Server 5.7\bin

Run MySQL client and issue commands:

```
mysql> create database mserver;
mysql> use mserver;
mysql> source create-tables.sql;
```



```
MySQL 5.7 Command Line Client
Enter password: *****
Welcome to the MySQL monitor.  Commands end with ; or \g.
Your MySQL connection id is 7
Server version: 5.7.30-log MySQL Community Server (GPL)

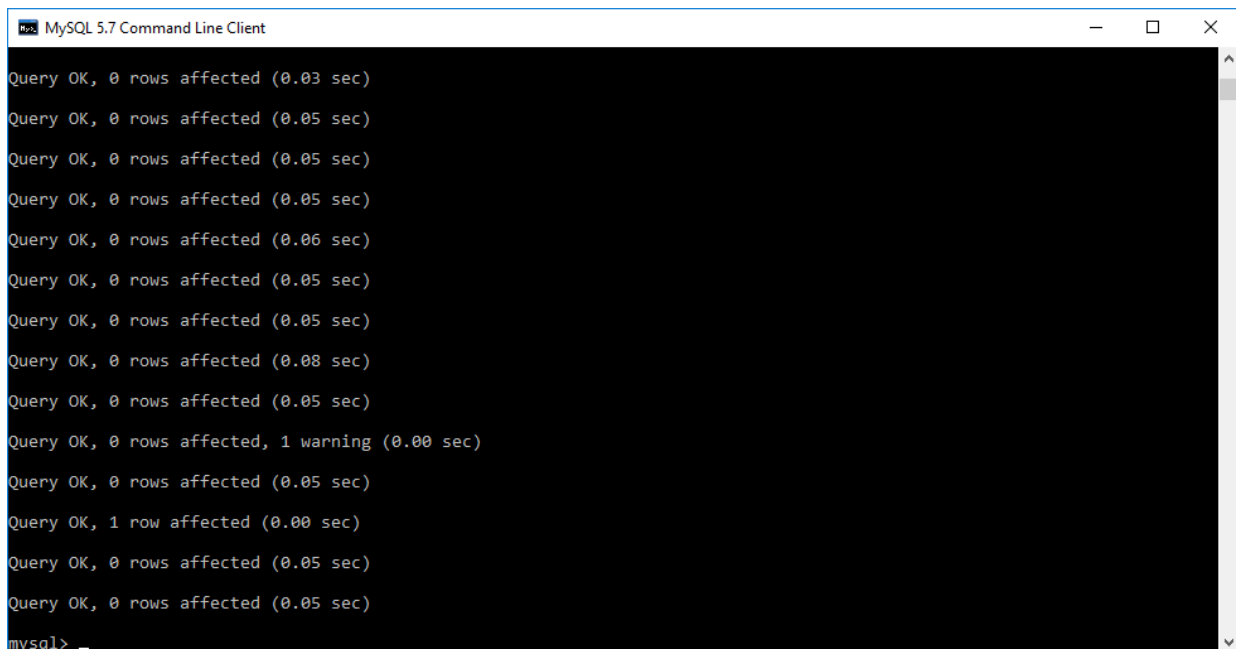
Copyright (c) 2000, 2020, Oracle and/or its affiliates. All rights reserved.

Oracle is a registered trademark of Oracle Corporation and/or its
affiliates. Other names may be trademarks of their respective
owners.

Type 'help;' or '\h' for help. Type '\c' to clear the current input statement.

mysql> create database mserver;
Query OK, 1 row affected (0.02 sec)

mysql> use mserver;
Database changed
mysql> source create-tables.sql;
```



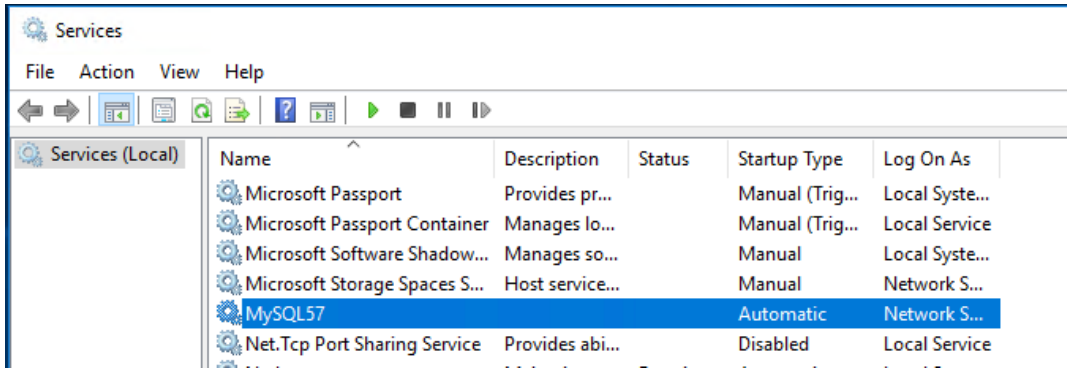
```
MySQL 5.7 Command Line Client

Query OK, 0 rows affected (0.03 sec)
Query OK, 0 rows affected (0.05 sec)
Query OK, 0 rows affected (0.05 sec)
Query OK, 0 rows affected (0.05 sec)
Query OK, 0 rows affected (0.06 sec)
Query OK, 0 rows affected (0.05 sec)
Query OK, 0 rows affected (0.05 sec)
Query OK, 0 rows affected (0.08 sec)
Query OK, 0 rows affected (0.05 sec)
Query OK, 0 rows affected, 1 warning (0.00 sec)
Query OK, 0 rows affected (0.05 sec)
Query OK, 1 row affected (0.00 sec)
Query OK, 0 rows affected (0.05 sec)
Query OK, 0 rows affected (0.05 sec)

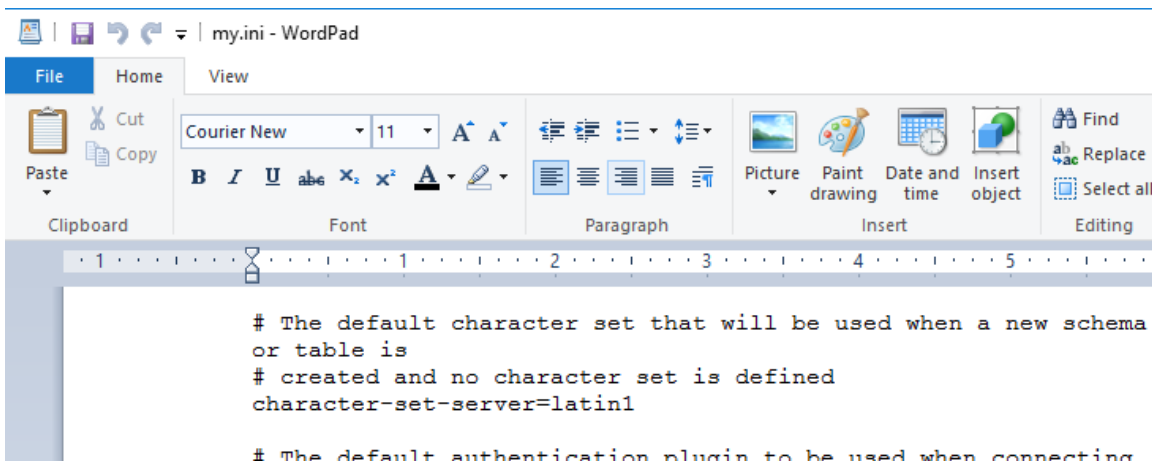
mysql>
```

Configure database performance:

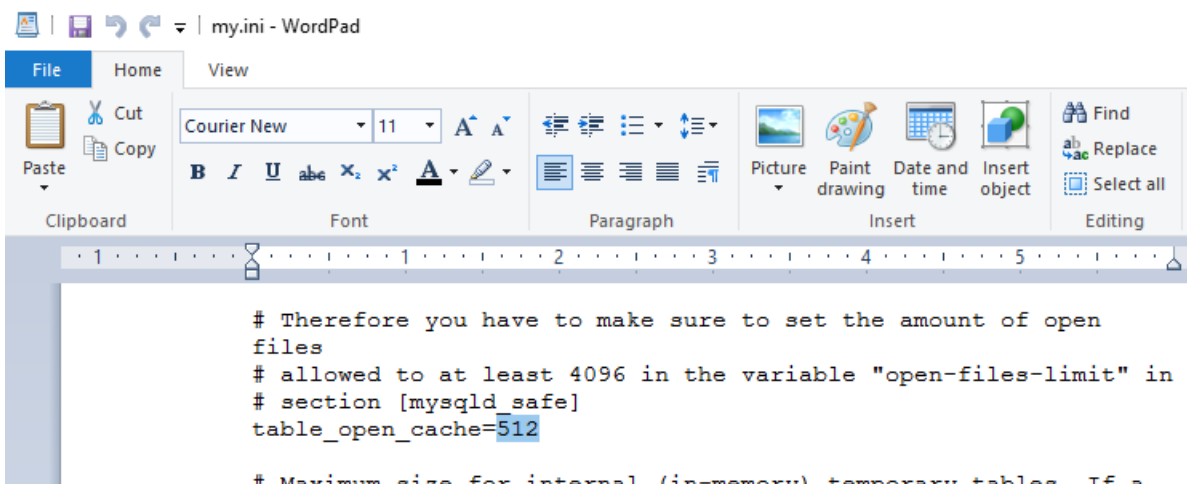
Stop the MySQL service if it is running:



Open `C:\ProgramData\MySQL\MySQL Server 5.7\my.ini` in **Wordpad** and set `character-set-server=latin1`



Change `table_open_cache` to be 512



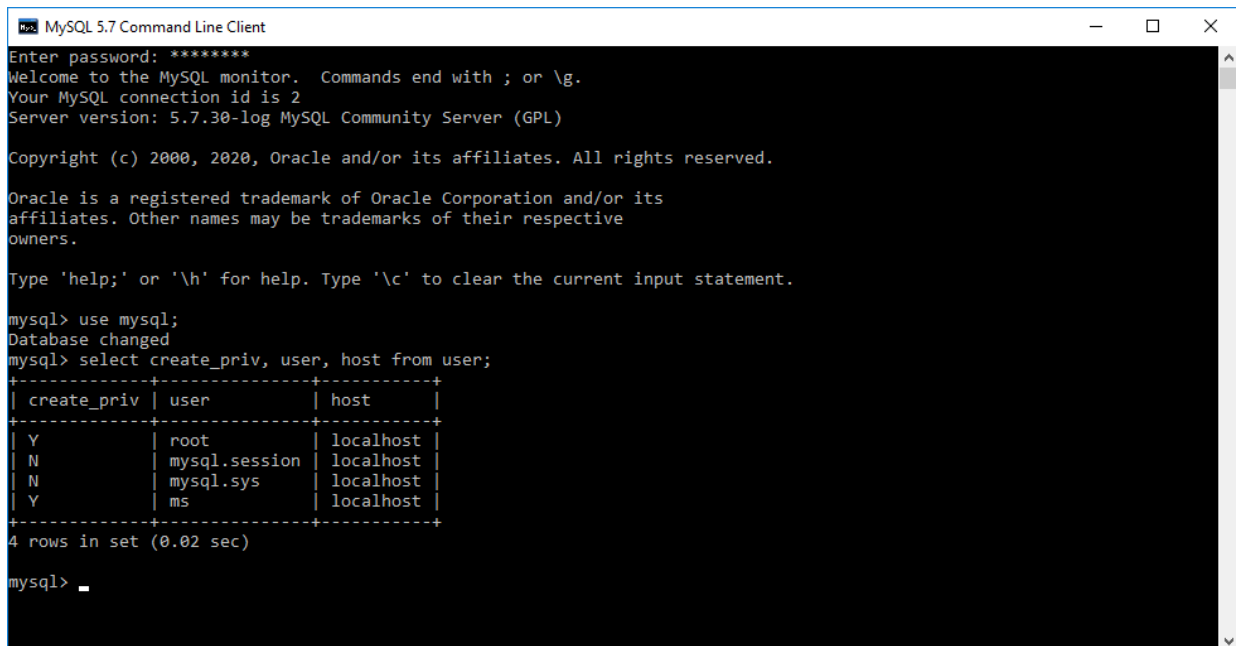
Save the file as 'Plain text document'. If using Notepad then the MySQL service will not start...

Delete the `ib_logfile*` files located in `C:\ProgramData\MySQL\MySQL Server 5.7\data` folder.

<Reboot the Server>

Use MySQL client to check that the ms user exists and has create_priv privileges. Issue commands:

```
mysql> use mysql;
mysql> select create_priv, user, host from user;
```



```
MySQL 5.7 Command Line Client
Enter password: *****
Welcome to the MySQL monitor.  Commands end with ; or \g.
Your MySQL connection id is 2
Server version: 5.7.30-log MySQL Community Server (GPL)

Copyright (c) 2000, 2020, Oracle and/or its affiliates. All rights reserved.

Oracle is a registered trademark of Oracle Corporation and/or its
affiliates. Other names may be trademarks of their respective
owners.

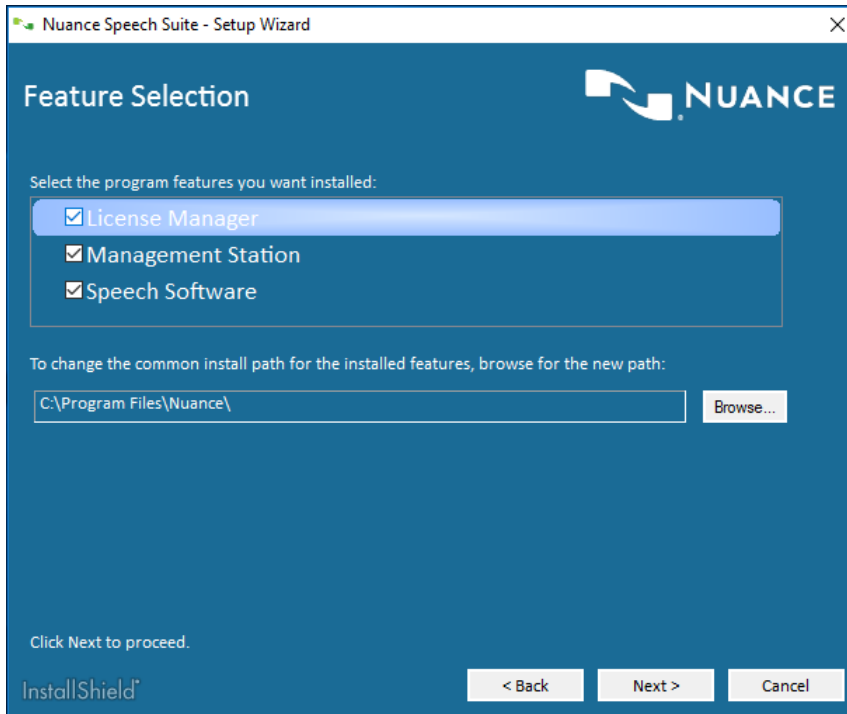
Type 'help;' or '\h' for help. Type '\c' to clear the current input statement.

mysql> use mysql;
Database changed
mysql> select create_priv, user, host from user;
+-----+-----+-----+
| create_priv | user      | host      |
+-----+-----+-----+
| Y           | root     | localhost |
| N           | mysql.session | localhost |
| N           | mysql.sys  | localhost |
| Y           | ms       | localhost |
+-----+-----+-----+
4 rows in set (0.02 sec)

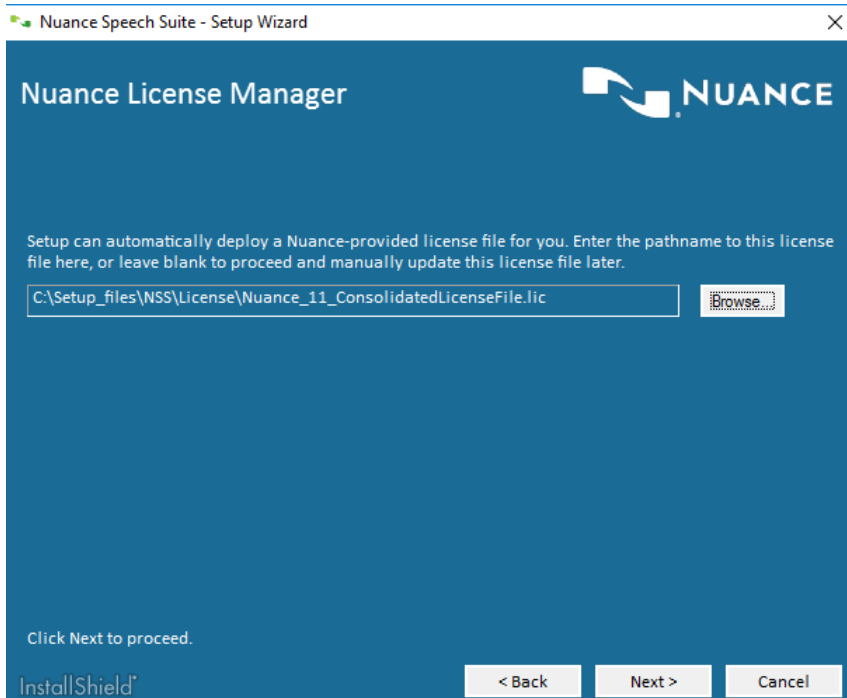
mysql> _
```

Install NSS 11.04

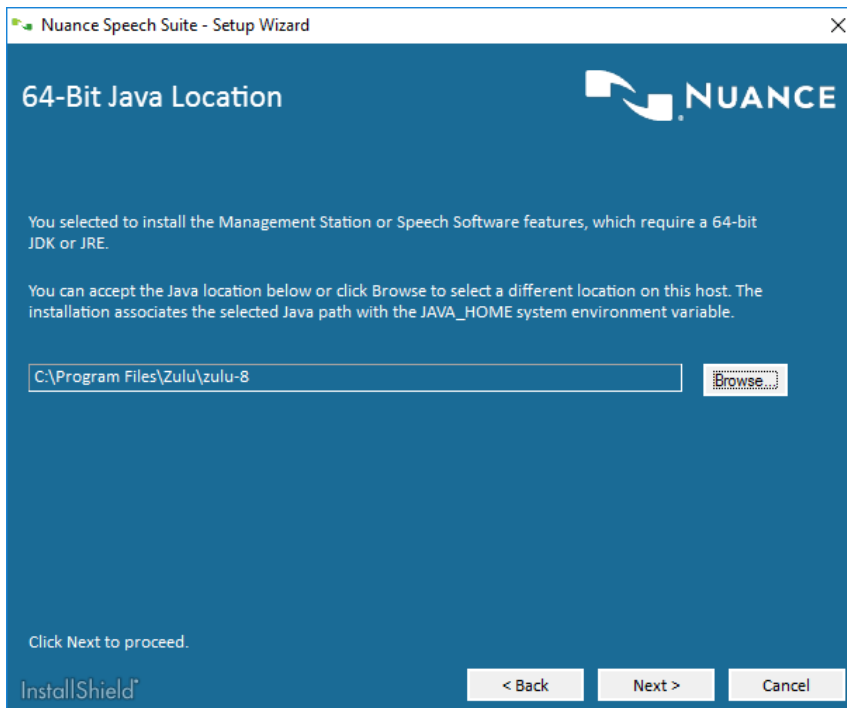
The installation package is available in the *NSS* folder in the temp folder where the installation package was extracted. Right click on '*Nuance Speech Suite 11.0.exe*' and select '*Run as Administrator*'. If all Nuance components are to be installed on this server then select all three components: License Manager, Management Station and Speech Software:



Enter the location of the Nuance License file. It is available in the folder *NSS\License* and is named *Nuance_11_ConsolidatedLicenseFile.lic*:



Enter the location of the Java JDK installation:



Select database type.
If MS SQL Service is used:

Nuance Speech Suite - Setup Wizard

Configure Database Type

The Nuance Speech Suite product can be used with either Oracle MySQL or Microsoft SQL Server. Please select a database product to use for this installation.

Oracle MySQL

Microsoft SQL Server

Server Name:

Server Port:

Database Name:

Instance Name:

Click Next to proceed.

InstallShield < Back Next > Cancel

Nuance Speech Suite - Setup Wizard

Nuance Management Station

Enter the port@host pair(s) for the License Manager host. Separate multiple entries with a comma. For example, 27000@host1,27000@host2.

License address:

Select the path to the Apache Tomcat location. The installation associates the selected Tomcat path with the TOMCAT_HOME system environment variable.

Browse...

Select the path to the Connector/J JAR file.

Browse...

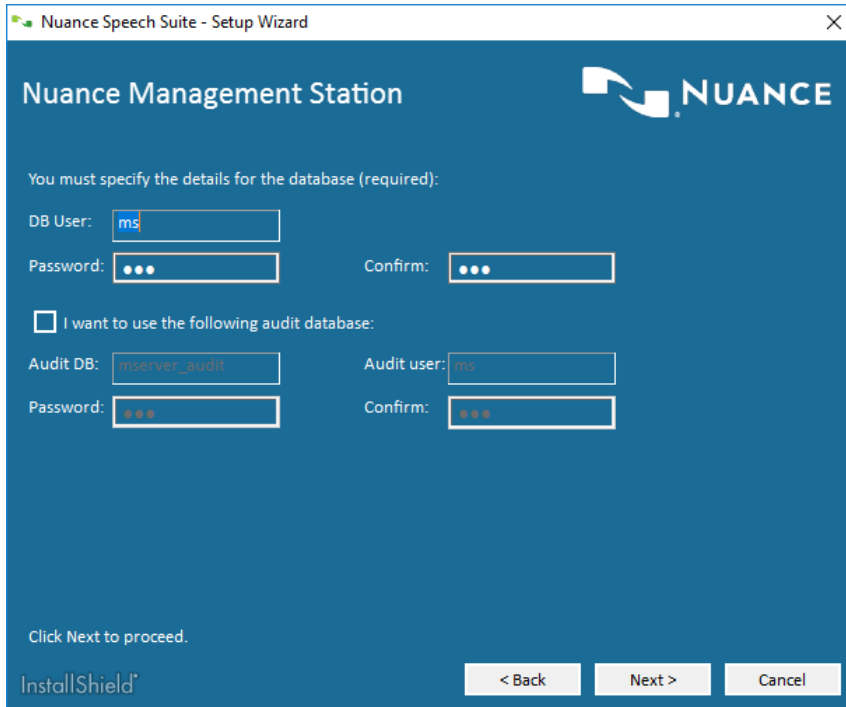
Click Next to proceed.

InstallShield < Back Next > Cancel

If MySQL is used:

The screenshot shows the 'Configure Database Type' step of the Nuance Speech Suite - Setup Wizard. The window title is 'Nuance Speech Suite - Setup Wizard'. The Nuance logo is in the top right. The text reads: 'The Nuance Speech Suite product can be used with either Oracle MySQL or Microsoft SQL Server. Please select a database product to use for this installation.' There are two radio buttons: 'Oracle MySQL' (selected) and 'Microsoft SQL Server'. Below are three text input fields: 'Server Name' with 'vm-nss11.seclab.com', 'Server Port' with '3306', and 'Database Name' with 'msserver'. At the bottom, it says 'Click Next to proceed.' and has buttons for '< Back', 'Next >', and 'Cancel'. The 'InstallShield' logo is in the bottom left.

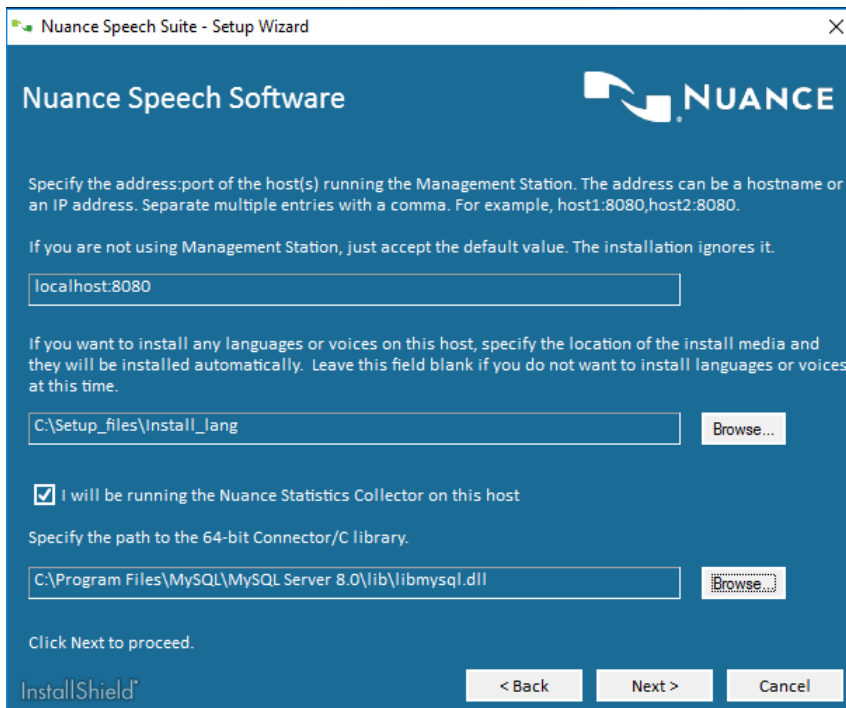
The screenshot shows the 'Nuance Management Station' step of the Nuance Speech Suite - Setup Wizard. The window title is 'Nuance Speech Suite - Setup Wizard'. The Nuance logo is in the top right. The text reads: 'Enter the port@host pair(s) for the License Manager host. Separate multiple entries with a comma. For example, 27000@host1,27000@host2.' Below is a text input field for 'License address' with '27000@localhost'. The next section says: 'Select the path to the Apache Tomcat location. The installation associates the selected Tomcat path with the TOMCAT_HOME system environment variable.' Below is a text input field with 'C:\apache-tomcat-9.0.22' and a 'Browse...' button. The next section says: 'Select the path to the Connector/J JAR file.' Below is a text input field with 'C:\Program Files (x86)\MySQL\Connector J 8.0\mysql-connector-java-8.0.17.jar' and a 'Browse...' button. At the bottom, it says 'Click Next to proceed.' and has buttons for '< Back', 'Next >', and 'Cancel'. The 'InstallShield' logo is in the bottom left.

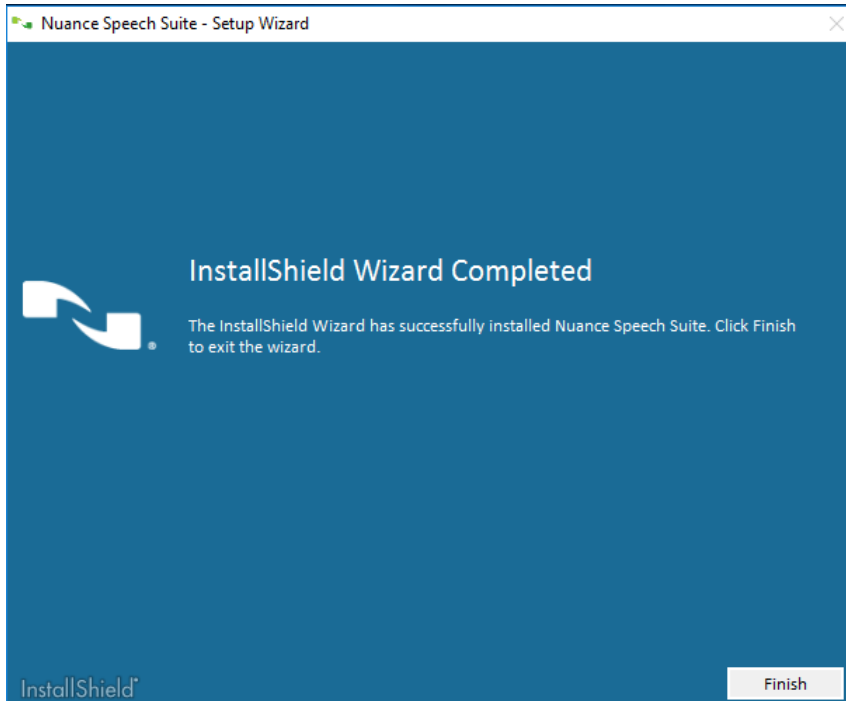
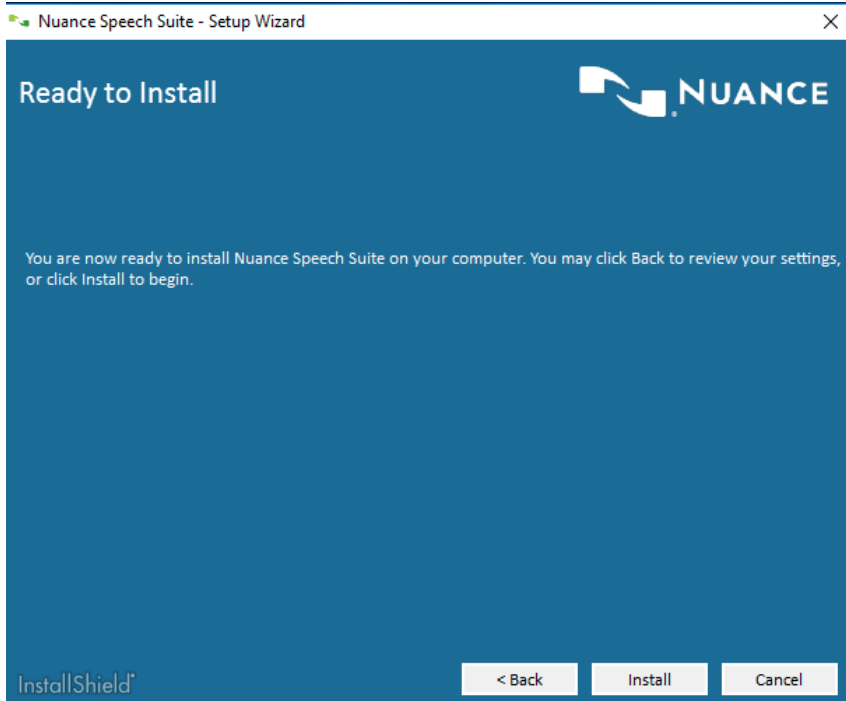


To install the provided US English ASR and TTS languages files then point to the folder *Install_lang* in the folder where the installation package was extracted. Otherwise replace these packages with any language (extracted) from the Recognizeer and Vocalizer packages available on SWDL.

If SQL server is used then enter the path to the *msodbcsql13.dll* file that typically is installed in the *C:\Windows\System32* folder.

If MySQL is used the point to the *libmysql.dll* file in the *<drive>:\Program Files\MySQL\MySQL Server 8.0\lib* folder.





Finish up the installation

Copy updated *NSSserver.cfg* file from the *SpeechServer_config* folder to *<Drive>:\Program Files (x86)\Nuance\Speech Server\Server\config*

Open Services Control Manager and right mouse click on Nuance Speech Server, select Properties and change Startup type to Automatic (Delayed).

Follow the instruction in the Nuance Installation guide how to log on to the Nuance Management Station (user is *Administrator* and initial password in *changeit*) to assign resources and to start the services.